

T E N T H A N N U A L

Northern
WOODS

AN EXHIBITION OF

WOODWORKING

OCTOBER 1ST THRU 4TH 1992

RIDGEDALE MALL, MINNETONKA, MINNESOTA



Sponsored by the Minnesota Woodworkers Guild and Davlins

WELCOME TO NORTHERN WOODS

Northern Woods is an annual woodworking show and competition sponsored by the Minnesota Woodworkers Guild and Davlins. The show provides an outlet for Guild members to display and discuss their crafts. More importantly, it is meant to expose the general population to the best in high quality woodworking design and construction. The pieces on display are more than furniture, they are art. Enjoy the show!

JUDGING CATEGORIES

Prizes are awarded for the following categories:

BEST IN SHOW

Best overall piece as picked by judges.

PEER AWARD

Best overall piece as picked by entrants.

FIRST TIME EXHIBITOR

Best piece in show by a first time exhibitor.

BEST DESIGN

Piece which best displays the following qualities:

- movement of eye around the piece
- volume - mass well proportioned and pleasingly distributed
- consistency - best qualities of piece are consistent throughout
- original idea - unusual, offbeat, or whimsical

MOST TECHNICALLY ACCOMPLISHED

Piece which best displays the following qualities:

- exquisite joinery
- flawless finish
- precise shapes and moldings
- pushes limits of materials and joinery
- expert veneering, inlay, etc.

BEST FINISH

Piece which best displays the following finish qualities:

- shows beauty of wood
- depth, luster, and color
(finish may alter appearance of natural wood)

BEST DISPLAY OF HAND TOOL USAGE

Piece which best displays exceptional hand tool skill - moldings, carvings, dovetails, cabriole legs, scooped seats, spoke shaved spindles, etc.

PEOPLE'S CHOICE AWARD

The public's favorite

ABOUT THE JUDGES

The Guild would like to thank this year's judges. The large number, diversity, and high quality, of pieces makes judging a formidable task.

BILL PUIG

Bill is the owner of Javier Puig Decorative Arts gallery in Minneapolis. His gallery specializes in hand crafted objects by American artists. Pieces shown at the gallery include furniture, metals, glass, ceramics, textiles, and jewelry. Exhibits featuring one artist, or a group of artists, are shown at the gallery every eight weeks. Bill has Master of Arts degrees in Museum Studies and American Studies from the University of Pennsylvania. He has also done graduate work at Yale with the Garvan Collection. Prior to opening his gallery in 1990, Bill was the curator of decorative arts and the Minneapolis Arts Institute for nine years.

DAVID SLOAN

David Sloan, editor and publisher of *American Woodworker* magazine, has been involved in woodworking since childhood. David studied industrial arts education at Millersville University, and after graduating ran his own woodworking business in New York and Arizona, specializing in custom-made furniture, spiral staircases, and louvered shutters.

David began his career in magazine publishing in 1983, joining the staff of *Fine Woodworking* magazine as editor. He joined *Rodale Press* in 1986 as editor with *Practical Homeowner*, moving to become executive editor of *American Woodworker* in 1987 when Rodale Press acquired the magazine.

David lives in Coopersburg, Pennsylvania with his wife and their two children. He is an avid amateur woodworker and wood turner, and maintains an interest in tools and woodworking machines of the past.

DEAN WILSON

Dean has been an assistant professor of furniture design at the Minneapolis College of Art and Design for the past ten years. He holds a Master of Fine Arts degree in sculpture from the University of Minnesota. In addition to teaching, sculpting, and building furniture, Dean designed and constructed the Children's Museum at Bandanna Square.

Dean enjoys non-traditional designs. His credo is "be very serious about non-serious topics"; good design depends on the artist understanding and questioning the direction of their designs. This sense of the purposeful whimsicality is apparent in the pieces he designs and constructs. Dean has currently moved away from wood as a primary medium, and is working with welded stainless steel.

When *Ridgedale* was approached by the *Minnesota Woodworkers Guild* to host their ninth annual exhibition in 1991, we immediately agreed this would be a perfect match. We now have the pleasure of hosting the *Minnesota Woodworkers Tenth Annual Northern Woods Exhibition*.

We received many positive responses from our customers last year and it's our pleasure to be the host again this year. The *Ridgedale* customer appreciates the arts and this show displays the high level of artistic talent the *Minnesota Woodworkers Guild* represents. The pieces in the show are made from hardworking, dedicated artisans who appreciate the traditional talents required to make such beautiful pieces.

There are so many factors involved in the creation of the many pieces on display, each one unique to its own creator's personality and interpretation. The process starts with an idea which is then transformed -- through tools, talent and hard work -- to a unique one-of-a-kind piece of art. We hope you will appreciate this effort as you view and admire the pieces. The most outstanding impression you will leave with will undoubtedly be quality of workmanship and design.

We thank the *Minnesota Woodworkers Guild* for choosing *Ridgedale Shopping Center* for a second time and wish them the best of shows and much future success.

Joe Nicchetta
General Manager
Ridgedale Shopping Center

The Guild would like to offer a special thanks to our long time supporters who have helped underwrite this year's show.

Jones Lumber
Shop Smith

ELIZABETH H. BARNARD - continued

- 104 **Funerary "Temple"** \$175
Walnut frame and legs, oak and ash sides, walnut and found-wood lid.
Interior is burned to put the box into a state of transformation.
Appropriate for the remains of a loved person.
4D X 6L X 10H

Elizabeth has worked with wood since the early 1960's. To her custom furniture business she brings experience in graphic design, calligraphy, photography, wilderness and foreign travel; all of which affect her approach to woodworking. Her work has been exhibited locally since 1988.

JAMES BORDEN

Hour Shop
138 North Silver Street
Wykoff, MN 55990
W (507) 352-4070 H (507) 352-4043

- 105 **"Music of the Spheres"** *See photo section* \$20,000
Black walnut from Southeast Minnesota.
This piece is a large kinetic sculpture. It does not keep "clock time"; it playfully marks the passage of moments with grace and drama.
6'D X 12'L X 22'H

James Borden has been creating clockwork sculptures (most of which are actual clocks) for twelve years, but it really began with Tinkertoys many years earlier. He is originally from Rockford, Illinois, and is a graduate of Dana college and Wartburg Theological Seminary. He now lives in Wykoff, Minnesota.

TOM CASPAR

Thos. Caspar, Furnituremaker
2625 S.E. 4th Street
Minneapolis, MN 55414

- 109 **Scandinavian Country Table** Inquire
Northern white pine with distressed finish.
The dovetail cleated and pegged top, tusk tenons, and leg style
are traditional Scandinavian features.
34D X 51L X 30H
- 110 Dining Table Inquire
Cherry.
42D X 66L 30H

Trained in an old-fashioned shop in Minneapolis, Tom has been building furniture for 15 years. He has worked on many fine antiques and made new pieces in different period styles. Dining tables are a specialty. Teaching, writing, and learning, he thinks of himself as a traditional furniture maker. Tom displays his work at *Complements* (3020 West 50th, Minneapolis).

CONRAD DAHLIN

Dahlin Wood Designs, Inc.
1397 Ashland Avenue
St. Paul, MN 55104
W 291-8694 H 647-9502

- 111 *"Of Arms and a Man"* See photo section N.F.S.
Honduras mahogany with Watco oil finish.
This piece was modeled to scale in clay, then scaled up and
roughed out in wood using a Foredom power carver to remove
large amounts of extra material. Swiss carving tools and
cogelows were used for all details. Undercutting was done with
a knife.
5D X 16L X 11H

CONRAD DAHLIN - continued

112 **Rocking Horse** Inquire

Basswood and pine.

The outlines and details were done by hand with Swiss carving tools and cogelows. Undercutting was done with a knife.

Piece is a joint effort between Conrad and Ellen Foose. Ellen designed saddle and harness and painted the piece. Conrad carved the head, mane and tail, plus constructed the carving blank.

24D X 60L X 48H

Conrad has been a woodworker since the 1970's. He started Dahlin Wood Designs, Inc. in 1989 only to discover a year ago that his true calling is carving. His piece "Of Arms and a Man" took first place in *Stylized Figures* and second place in *Human Figures Under 15 Inches* at the 1992 International Woodcarver's Congress.

CLIFFORD W. ERICKSON

4820 Coventry Road West

Minnetonka, MN 55345

W 782-7496

H 932-9052

113 **Eighteenth Century English Partners Desk** N.F.S.

See photo section

Casework constructed of solid Honduras mahogany. Drawers constructed of red oak and Douglas fir. Finish is potassium dichromate and Hydrocote lacquer.

39D X 58L X 33H

Cliff is a business development manager at the Honeywell Systems and Research Center. A long time interest in woodworking was rekindled three years ago when he offered to build cabinets for his daughter's kitchen. This is his first major casework piece.

JOE GOSNELL, BOB KINGHORN, & STEVE ERICKSON

1711 Knox Avenue South

Minneapolis, MN 55403

W 546-3344

H 377-0478

124 **Dining Table and Eight Chairs** N.F.S.

Ponderosa pine with environmentally correct liuos citrus based finish.

Style could be called *Fresh Salsa*. Chairs are 4 inches higher than table and have arched backs to match tapered side and ends of table. Each chair has a different design in its back and front apron. This distinct design also appears in the apron of the table, giving each chair a special place around the table.

A variety of chisels and gouges, as well as a highly modified block plane were used to texture all surfaces.

60D X 108L X 36H

Joe Gosnell is an amateur woodworker who has built a wide variety of contemporary furniture pieces. He is currently interested in bringing forward 100 year old New Mexico styles using primarily hand tools and contemporary woodworking techniques. His work is strongly influenced by 19th century Navaho weavings. Bob Kinghorn's biography is found under his individual listing. Steve Erickson provided valuable assistance to Joe and Bob on the pieces.

DEAN HOLZMAN

Holzman Wood Designs
3129 James Avenue South
Minneapolis, MN 55408
W 623-4716

H 824-0697

- 127 **Bonnie's Table** \$625
Cherry with hand rubbed oil and wax finish.
By cutting a dado the length of the apron and dropping it 1 3/4 inch from the top, the overall mass of this piece has been softened and a sense of lightness created.
15D X 41L X 30H
- 128 **Cabriole Coffee Table** *See photo section* \$400
Cherry with hand rubbed oil and wax finish.
Playing with the cabriole form has given this table a slightly whimsical feel while keeping a strong classical sense.
13D X 26L X 16H
- 129 **Lauer Pedestal** \$140
Walnut and maple with hand rubbed oil and wax finish.
The structure of this piece defines its open spaces to create a contemporary style with a sophisticated traditional overtone.
10D X 10L X 38H

Dean Holzman has been designing and building furniture for over twelve years. In addition to furniture, Dean has designed numerous interiors and done extensive design work for the theater. Critics have call his designs "gorgeous", "elegant", and his use of space as "having dynamic control".

CRAIG JENTZ

313 West 49th Street
Minneapolis, MN 55409
W 494-1650 H 822-4599

132 **Dresser** N.F.S.
Lacewood and maple with hand rubbed lacquer and wax finish.
23D X 63L X 34H

133 **Armoire** N.F.S.
Lacewood, maple and aromatic cedar with hand rubbed lacquer
and wax finish.
20D X 35L X 81H

This set of match pieces derives its lines partially from the art deco style. The luminescence of the lacewood grain is accented by the convex doors. The curve of the legs is highlighted by the bordering shoulder.

Legs were turned by David Walter.

Craig is a self taught woodworker who has been building furniture for nine years. He enjoys the challenges and visual rewards of using curvilinear design and construction in contemporary furniture.

TIM JOHNSON

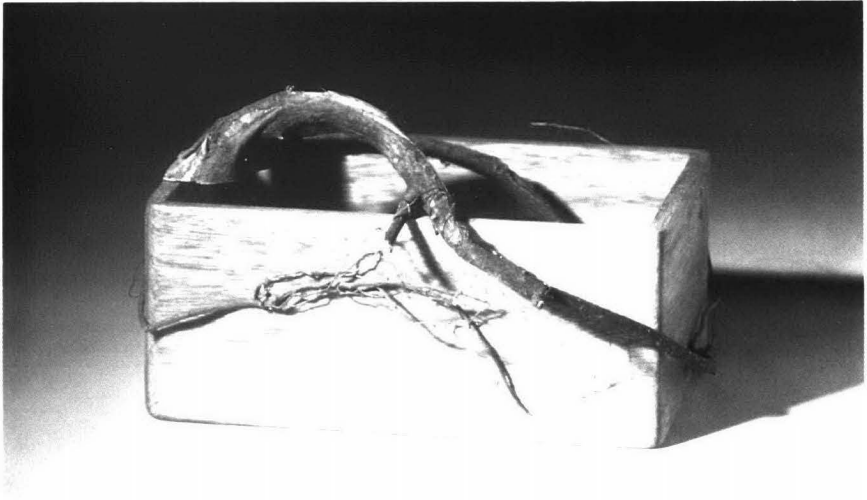
Complements
3014 West 50th Street
Minneapolis, MN 55410
W 922-1702

163 **Arts & Crafts Style Bed** \$2,300
Honduras mahogany with aniline dye and brushed varnish
finish.
72D X 86L X 47H

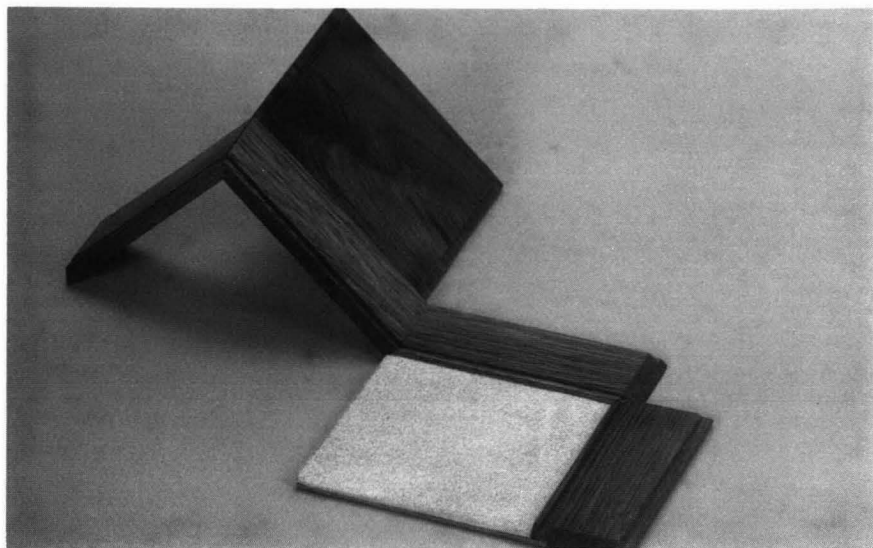
Tim has been buying, restoring, and selling antique furniture for 18 years. Since 1986 he has been displaying and building furniture in traditional American styles. He owns *Complements*, a store where he displays both his antique and custom made furniture.



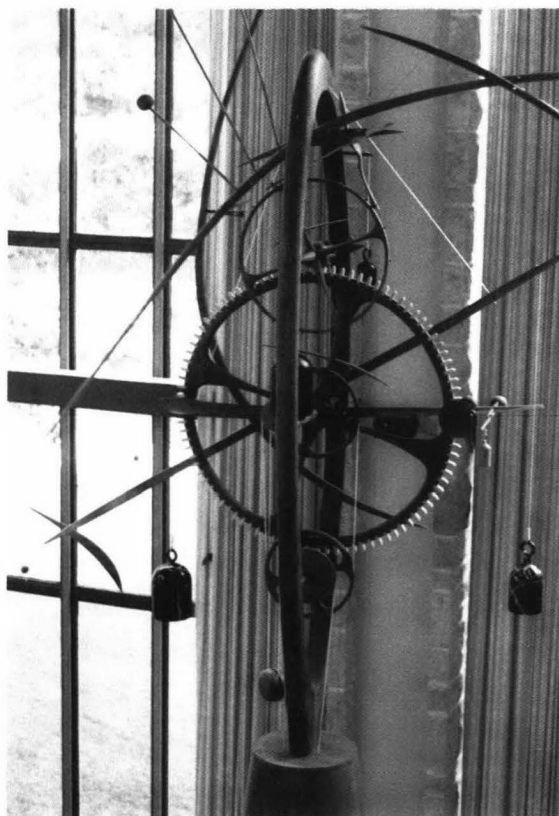
101 ALBERT R. ABBOTT



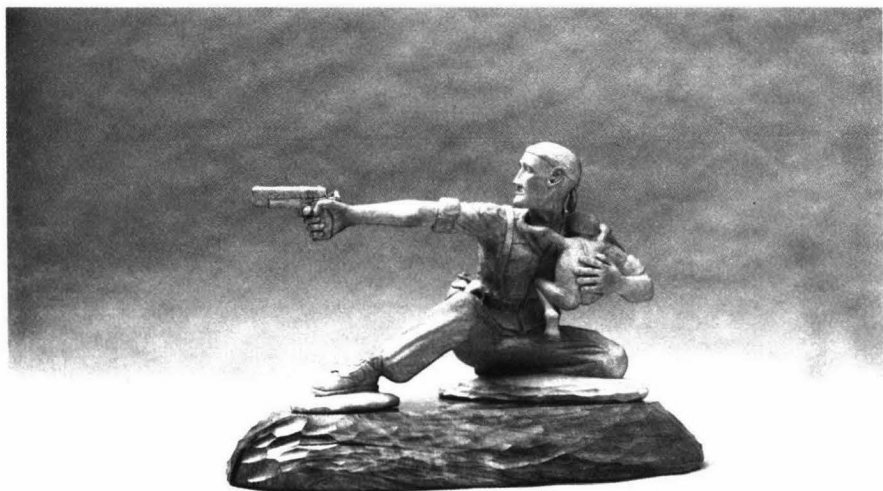
102 ELIZABETH H. BARNARD



103 ELIZABETH H.
BARNARD



105 JAMES BORDEN



111 CONRAD DAHLIN



113 CLIFFORD W. ERICKSON



114 ELLEN FOOSE



115 RICHARD GOETTL



128 DEAN HOLZMAN



130 CHRISTOPHER A. INMAN



131 CHRISTOPHER A.
INMAN



147 RON NELSON



150 STEPHEN J. O'DONNELL



154 JOEL SIMON



157 LARRY TAYLOR



158 LARRY TAYLOR

TIM JOHNSON & TOM CASPAR

Complements
3014 West 50th Street
Minneapolis, MN 55410
W 922-1702

134 **Work Bench** \$1,795

Hard maple and hickory.

To provide stout, stable support for working wood, and with an eye toward eventual production, Tim and Tom have taken a contemporary approach to a traditional design. They've tried to capture the beauty of classical benches while streamlining construction techniques and focusing attention on important details. They chose to use wooden screws in the vises in part because they are a link to the tradition of woodworking.

Wooden screws provided by Wood Design Machines, Galveston, Texas.

22D X 88L X 38H

Biographies are provided with each artists individual entrees.

PAT JUETTNER

6616 Portland Avenue South
Richfield, MN 55423
W 927-7996 H 861-1022

135 **Foot Stool** N.F.S.

Butternut and maple. Hand carved flowers on top.

All mortises were made with chisels; flowers were hand carved with a knife.

12D X 17L X 13H

136 **Jewelry Chest** N.F.S.

Red oak and red oak lumber core.

Carving done with knife and gouges.

Stain customer mixed by R. W. Kurtenback. Carving design by Charlie Eiler.

Pat is an amateur woodworker who started his hobby four years ago. These two pieces are the third and fourth pieces he has carved.

BRUCE KIEFFER

Kieffer Custom Furniture, Inc.
1406 Grand Avenue #3
St. Paul, MN 55105
W 642-9615 H 699-0023

- 137 **Cedar Strip Solo Canoe** N.F.S.
Cedar strips covered with 6 ounce fiberglass and epoxy resin, trimmed in mahogany.
All strips were beveled and tapered with a hand plane. The thwarts, seats, and yoke were shaped with a finger plane and cabinet maker's rasps. The fiberglass resin was applied with brushes and squeegees.
length 15'6", beam 26", weight 35 pounds.

Bruce is the president of Kieffer Custom Furniture, Inc., which was established in 1978. Bruce writes freelance woodworking articles for the *Family Handyman* and *Today's Woodworkers* magazines. He also gives woodworking lectures and seminars, as well as builds occasional pieces of custom furniture.

BOB KINGHORN & TERRY DUNCAN

Robert C. Kinghorn Associates
22785 Murray Street
Excelsior, MN 55331
W/H 474-9588

- 138 **Knife Cabinet** Inquire
American chestnut, palm, and silver with oil and lacquer finish.
3D X 9L X 14H
- 139 **Table** Inquire
White oak, French tile, and colored epoxy with aniline die stain and oil and lacquer finish.
23D X 23L X 26H
- 140 **Funky Chair** Inquire
Miscellaneous branches and antique tools with wax finish.
16D X 16L X 68H

BOB KINGHORN & TERRY DUNCAN- continued

141 **Decorative Oak Cabinet** Inquire
White oak with orange water soluble dye. Pores filled with blue filler, finished with Deft Oil followed by Deft Clear Wood Finish. Surfaces were hand planed, then sandblasted to open the pores.
5D X 8L X 30H

142 **Chippendale Side Chair** (1 of set of 10) Inquire
Honduras mahogany with rush seat. Finish is a chemical reaction using potassium dichromate which maximizes the contrast of the wood. Top coat of Deft Oil and Deft Clear Wood Finish were then applied.
The wood for the ten chairs was removed from a house during a remodeling project and thrown away. The architect allowed Bob to remove the lumber from a dumpster. Rush seat was woven by Reed Weaver of Minneapolis.
5D X 8L X 30H

Using a combination of hand carving and gold leaf, Robert has won three national awards for his signs. In addition, he builds furniture, props for ad agencies, and cabinets using hand carving, plastics, and metal to accentuate his work. Robert shares his expertise by writing a number of the "Using Tools Columns" for the *Family Handyman Magazine*. He also currently teaches classes at Rosemont Technical College. Robert's business has been operating since 1973.

THOMAS W. LANZATELLA

186 Malcolm Avenue South
Minneapolis, MN 55414
W 683-5538 H 379-8238

143 **Audio Armoire** Inquire
Walnut with ebony trim.
22D X 25L X 54H

Tom has been a amateur woodworker for 25 years. He was exposed to the craft while attending a trade based high school in Detroit. Tom enjoys pieces with simple clean lines and sculpted joinery. He has also done many millwork related projects.

RON NELSON

12410 Overlook Road
Dayton, MN 55327
H 421-3428

- 147 **Carved Rocker** *See photo section* \$4,000
White pine.
28D X 24L X 35H
- 148 **Carved Chair** \$3,000
White pine.
21D X 24L X 35H
- 149 **Carved Chest** \$4,500
White pine and red cedar.
16D X 50L X 43H
All pieces were hand carved and painted with oil paints. A variety of power tools were used to rough out the pieces.

Ron has worked with wood in one way or another most of his life. Ron is a retired professional builder who got his start in woodworking by whittling as a boy. He is currently building furniture with shapes and forms that emphasize the carved exterior.

STEPHEN J. O'DONNELL

Watershed Design & Fine Woodcraft
Route 2, Box 197-A
Viola, WI 54664
W/H (608) 629-5673

- 150 **Rocker** *See photo section* \$2,800
Tiger maple and leather seat with hand rubbed oil finish.
Custom sizing available. Piece features flexible back.
24D X 42L X 42H

STEPHEN J. O'DONNELL - continued

151 **Music Stand** \$575
Birds eye maple with hand rubbed oil finish.
All wood threads and book matched panels.
24D X 24L X adjustable height

152 **Ancient American Flutes** \$95
Cedar with hand rubbed oil finish.
Piece is based on a 700 year old design. Instead of using the
traditional Western music scale, flutes are tuned using the native
technique of spacing holes based on the players hand size.
Original flutes were used for courting, healing, rituals, and
meditation.
1 inch diameter X 22L

Stephen has practiced woodworking since childhood where his model airplanes were famous around town. In high school he received an award for outstanding achievement in architectural drafting and model making. From 1970 to 1979 he traveled widely, taught school, and practiced woodcraft as an avocation. Since 1980 he has been a full-time woodworker. During 1986 and 1987 he taught numerous professional woodworking seminars.

Stephen is a professional woodworker and designer, practicing traditional European and Japanese techniques in creating original furniture and cabinetry of exceptional quality. His work is in the collections of many Wisconsin, Chicago area, and East Coast patrons, and is in use in the corporate suites of Hallmark Cards, Kansas City. Stephen has shown his works at the Philadelphia Craft Show, Washington Craft Expo, American Craft Expo in Evanston, Illinois, and several American Craft Council shows.

KIM RUPPRECHT

Prairie Ridge Woodworking
Box 1208
Pine Island, MN 55963
W (507) 252-0040 H (507) 356-8444

- 153 **Music Box of Traditional Design** Inquire
Walnut and sitka spruce.
All carvings are done with hand tools.
8D X 12L X 9H

Kim is a mechanical designer and has done custom woodworking part time since 1976. His focus has been on mechanical clocks and traditional furniture.

JOEL SIMON

J. C. Simon Fine Woodworking
4521 32nd Avenue South
Minneapolis, MN 55406
W 378-2605 H 722-4025

- 154 **Chest of Drawers** *See photo section* \$1,400
Honduras mahogany with tung oil finish.
17D X 34L X 28H
- 155 **Coffee Table** N.F.S.
17D X 50L X 16H
- 156 **End Table** N.F.S.
18D X 18L X 24H
Red cabbage wood from Suriname (Central America). Top and inlays from African mahogany wormwood. Tung oil finish.
The inspiration for this piece was finding a log washed up on the beach in the Virgin Islands. During its long journey via ocean currents from Africa, the marine toredo worm did it's work. The wormwood was cut from a log using hand saws and it was surfaced planed by hand. Joinery is hand cut pinned mortise and tenon.

MEL TURCANIK - continued

161 **Computer Desk** N.F.S.

Solid walnut birch and veneers. Hand rubbed polyurethane finish.

Piece is designed and built to fit the equipment requirements, task, personality and feelings of a very special woman. Wood was selected especially for figure and symmetry. Joinery is traditional. Piece disassembles into 4 modules for transport.

Dovetails on small desk are hand cut using a Dozuki and stand chisels. Inside corners of the drawer front (pins) were done with a specially ground band of steel driven into the wood along the saw kerf.

12D X 18L X 26H

162 **Box** \$38

Solid walnut, birch veneers. Hand rubbed acrylic lacquer finish.

All joints are splined. The grain wraps around corners wherever possible for a flowing, unifying effect.

10D X 10L X 5H

Mel starting woodworking in a marine repair business circa 1972. That being unprofitable, he spent the next 10 years as a respiratory therapist. Later, friends requested Butsudans and he's been woodworking ever since. Located in Kasson, Minnesota, Mel is also a dealer for HVLP spay systems and Hydrocote wood finishes.



WOODCRAFT®

*Everything for the
Woodworker!*



OVER 6,000 PRODUCTS, CLASSES,
SHARPENING SERVICE, TECHNICAL ADVICE
FREE CATALOG WITH THIS AD

Store Hours:

9741 Lyndale Avenue South
Bloomington, MN 55420
Telephone (612) 884-3634

Monday - Saturday: 9am to 6pm
Thursday: 9am to 9pm
Sunday: Noon to 5pm

WoodCarvers Store & School
Woodworking Outfitter & Instructors
3056 Excelsior Blvd,
Minneapolis, MN 55416
927-7491

The store is open from 9:30 A.M to 5:00 P.M. daily except Sundays.
Summer hours are in effect from June 15 to September 1 - call for
Saturday hours.

Traditional woodworking is what we specialize in. We carry tools (3
professional brands), woodworking chisels, Sorby turning tools, planes,
saws, scrapers, knives, marking & measuring tools, abrasives, clamps,
finishes, and other supplies. We also have approximately 500 books and
plans to instruct and inspire you. Come in and let us serve you!!

The Wood Carving School offers woodcarving classes and other
seminars including tool sharpening, woodturning, and other classes.
Classes are available evenings, Saturdays, and as one week sessions.
Arrangements can be made to hold a seminar for your group in your
area. Call Chris Effrem or write for more information.

Davlins

Fine Crafted Gifts

Proud Sponsor of the Northern Woods Exhibition

welcomes the skilled woodworkers of Minnesota to this year's show! This is our second year as a sponsor, and we are thrilled to take part in this celebration of Minnesota craftsmanship.

Vote for



People's Choice Award

In this confusing election year,
make your opinion count...

"Vote Wood!"

**Visit us soon for high quality handcrafted
gifts from all over the country!**

- * Largest Selection of Kaleidoscopes in the Midwest
- * Exotic Wood Jewelry Boxes in many sizes & styles
- * Beautiful Musically Tuned Windchimes

**"A Gift Remembered
Is A Gift From Davlins"**

