

F O U R T E E N T H



A N N U A L

Northern WOODS

AN EXHIBITION OF FINE
WOODWORKING

October 17th - 20th, 1996

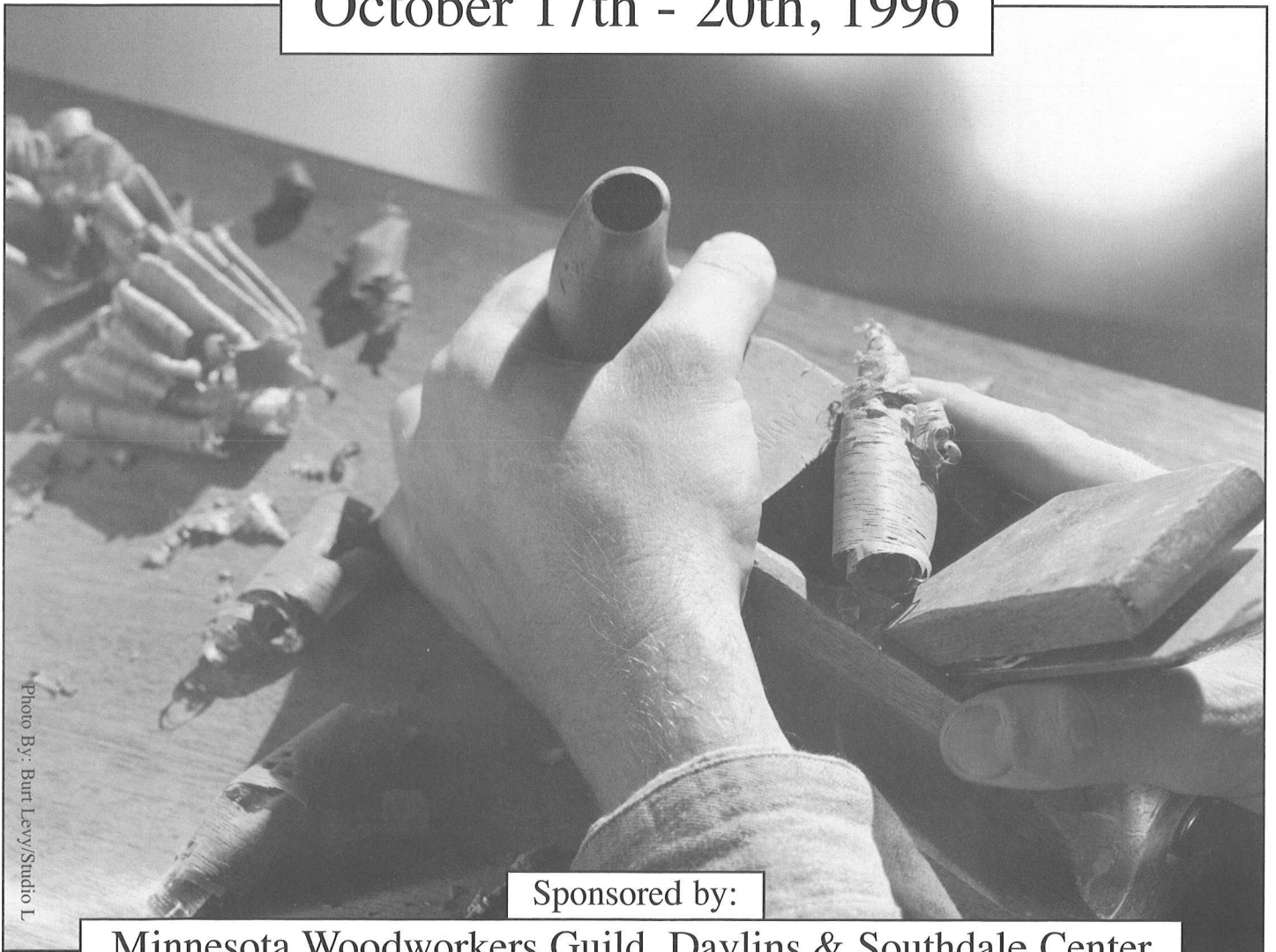


Photo By: Burt Levy/Studio L

Sponsored by:

Minnesota Woodworkers Guild, Davlins & Southdale Center

WELCOME TO NORTHERN WOODS

Northern Woods is an annual woodworking show and competition sponsored by the Minnesota Woodworkers Guild, Davlins, and the Southdale Center. The show provides an opportunity for Guild members to display and discuss their craft. More importantly, it gives the general public an opportunity to view the best in high quality woodworking design and construction. The pieces on display are more than furniture. They are works of art. Enjoy the show!

NORTHERN WOODS EXHIBITION COMMITTEE MEMBERS

Ron Betcher	Craig Borgmann
Dave Boulay	Willis Bowman
Tom Caspar	Richard Gotz
Richard Helgeson	Craig Jentz
Tim Johnson	Pat Juettner
Jerry Lilja	Dave Looney
Ross Peterson	Peter Ribotto
Jim Tracy	Don Wattenhofer

If you have suggestions or comments about the show, or would like to help with next year's show, please contact a committee member.

We would like to extend our sincere thanks to Ruby Tuesday's and Gloria Jean's Coffee for catering the awards night reception.

SOUTHDALE

An American Original. A Minnesota Tradition.

Southdale is pleased to host the Minnesota Woodworkers Guild's Fourteenth Annual Northern Woods Exhibition. We anticipate many positive responses from our customers who appreciate the arts.

This show displays the high level of artistic talent the Minnesota Woodworkers Guild represents. The pieces in the show are made by hardworking, dedicated artisans who appreciate the traditional skills required to work with wood. There are many factors involved in the creation of the pieces on display, and each one is unique to its own creator's personality and interpretation. We hope you will appreciate this effort as you view and admire the pieces. Your most outstanding impression will undoubtedly be that of the quality of workmanship and design which you will see throughout the show.

We thank the Minnesota Woodworkers Guild for choosing Southdale as the site for this exhibition and wish its members the best of shows and much future success.

Paul Skram
Property Manager
Southdale Shopping Center

ELIZABETH H. BARNARD

1013 Thorn Street
St. Paul, MN 55106
W/H (612) 776-7821

101 Dining Table

N.F.S.

Red elm with hand rubbed oil/urethane finish.

This is a trestle table variation with bent laminated legs that are tapered in two dimensions.

32W X 64L X 29H



102 Pandora's Box

\$200

Mixed media.

This is a restatement of the Greek myth in which Pandora is sent to Earth with a "box" full of ills for humankind. Her curiosity piqued, she steals a look, releasing all the maladies, and shuts the lid in time to retain only hope. An earlier myth has Pandora a goddess in her own right. She comes to Earth with a vessel containing all manner of bounty for humankind: flowering plants, medicinal herbs, and the seeds of human community.

9W X 11L X 13H

103 Plumb Bob Box

\$150

Mixed hardwoods.

Japanese carpenters illustrated their skill to potential customers by showing their plumb box, much as American carpenters make their own joiner's box for their tools. This box was made to house Elizabeth's plumb bob, a Japanese tool given to her by one of her woodworking teachers.

9W X 11L X 13H

Elizabeth Barnard has been working wood since sixth grade, when she copied the remodeling being done on her parent's home. She maintains a custom furniture studio in Minneapolis, edits the quarterly magazine of the Minnesota Crafts Council, and teaches woodworking at the Minneapolis College of Art and Design. She believes that the world would be a better place to live if we made most of our decisions with aesthetic principles in mind.

ELLEN BENAVIDES

2625 4th Street S.E.
Minneapolis, MN 55414
W (612) 378-2605
H (612) 374-9118

104 "Forgiveness" Coffee Table

N.F.S.

California redwood.

This piece is made from a piece of wood that Ellen discovered on a business trip between San Francisco and Seattle in the fall of 1993.

14W X 72L X 20H

Six months after finding the piece of redwood, Ellen resigned from her position as Director of Health Policy for Hennepin County. She then embarked on a year-long apprenticeship as a furniture maker in Nova Scotia. Since her return to the Twin Cities, she's begun a half-time health policy consulting business and became a member of the Fourth Street Guild, where she accepts commissions for custom furniture.

STEVEN ERICKSON

2916 Nevada Avenue North
New Hope, MN 55331
W (612) 546-3344
H (612) 470-9223

110 American Flag Table

Sugar pine with Levos and enamel finish.

54W X 72L X 28H

N.F.S.

Steve is a resident of Excelsior. He learned woodworking by assisting Joe Gosnell with numerous projects.

YANA FRANK

2713 Garfield Avenue South
Minneapolis, MN 55408
H (612) 870-4402

111 Table Lamp

Cherry plywood, cherry, and rice paper.

Studying architecture in Japan for a month, Yana was particularly impressed with the simplicity and transparency of Japanese design - its clear expression of the nature of materials and how they are shaped. Inspired by this approach, the shade of the lamp is made of a simple piece of paper, folded and held with a paper clip.

The curved shape contrasts with an orthogonal frame, creating tension between the softness of the paper volume and the rigidity of the wooden structure.

Making this lamp, Yana especially enjoyed discovering how a simple piece can create a richness of associations and meaning: one friend compared it to a (light) sculpture framed by a display case, another to a bird in a cage, while Yana is reminded of a ghost, glowing in the dark and swaying gently in the wind.

7D X 7L X 15H

N.F.S.

112 Table

Baltic birch plywood.

Again Yana is interested in the transparency of the joinery and the honest expression of the material. Rather than hiding the striped edge of the plywood, she uses it as a decorative feature highlighting the joints and the layered character. Yana wanted to explore ways to see plywood not as a cheap substitute for solid wood, but as a material with a beauty of its own.

21D X 44W X 31H

N.F.S.

Yana was born in Germany, studied American cultural studies in Munich, and moved to Minneapolis in 1988. She has a B.A. in architecture and has pursued graduate studies at the University of Minnesota. She applied her design background to remodel a duplex. She is currently working as an apprentice in fine woodworking.

RICHARD GOTZ

415 Wedgewood Lane
Plymouth, MN 55441
W (612) 536-4198
H (612) 544-7278

113 Workbench in the European Tradition

Hard maple, finished with wipe-on varnish and beeswax. Knobs created from spalted yellow birch.

As Scott Landis wrote in *The Workbench Book*, "the workbench is the foundation tool upon which all handwork is performed and without which we would have difficulty completing a single project." Well, Richard struggled on a wobbly warped plywood workbench for years, always wishing he had a "real workbench," but always too busy making other things. After cutting dovetails for the Guild's library chest using his inadequate bench, Richard decided it was high time that he set all other projects aside and build a real bench. There are many specialized benches, but he decided to adopt the bench that cabinetmaker Frank Klausz made famous. As Frank says, "it's not my design; it's a design that has been used for hundreds of years and it can't be improved." The highlight of construction was flattening the bench top using only winding sticks and a #6 Stanley/Bailey plane made in 1910. Using a commercial planer would have been easier, but Richard was determined to use only the tools in his shop. According to old-world traditions, workbenches were passed on from one generation to another. The woodworker was the custodian, not the owner. Richard made this bench not only for himself, but all the future owners that love to make objects of wood.

38D X 88L X 38H

N.F.S.

EDWARD GRONSETH

Kristian Brunsdale, Inc.
3601 Hiawatha Avenue.
Minneapolis, MN 55406
W (612) 729-7689
H (612) 724-9121

116	ORB Lamptable Cherry. 27Dia X 22H	Inquire
117	ORB Coffee Table Cherry. 27D 54L X 17H	Inquire
118	ORB Console Cherry. 21D 54L X 29H	Inquire
119	Ellipse Lamptable Cherry. 27Dia X 22H	Inquire
120	Ellipse Coffee Table Cherry. 39Dia X 17H	Inquire
121	Ellipse Console Cherry. 21D 54L X 29H	Inquire
122	Trademark Dining Table (Round with two leaves) Cherry. 45Dia X 30H	Inquire



Edward traces his interest in woodworking to age thirteen. One of his grandfathers was a Norwegian boat builder who carved working models made from the logs of ships he built and sailed in the Norwegian Merchant Marine. His other grandfather was a caretaker to his forest and a lover of fine woods. Edward pursued architecture for some time.

Edward sought out furniture manufacture and wood sculpture apprenticeships with designers who he felt were on the cutting edge. In 1973 he opened his own studio in Washington, D.C. He was fortunate enough to be recognized in the industry and many of his designs grace the homes of notable people. In Washington he was labeled "The Neo Nuevo Marvel" by the Washington Post. Edward returned to his home state of Minnesota in 1978.

Edward's custom design work includes entertainment centers, church furnishing, libraries, board rooms, desks, and benches. This work remains his first love. In addition, he offers many of his designs on the commercial market under the name of his maternal grandfather, "Kristian Brunsdale, Inc." Every design is handcrafted from solid hardwoods.

Edward's designs have been featured in national publications such as Interior Design, Furniture Design & Manufacturing, Wood & Wood Products, and Wood Shop News. His pieces are shown at furniture shows across the U.S. and in galleries from New York to California, and Alaska to Puerto Rico.

TIM JOHNSON

Complements

3020 West 50th Street

Minneapolis, MN 55410

W (612) 378-2605

H (612) 824-1536

127 Cupboard for Television and Video Cassette Recorder

N.F.S.

20D X 32L X 47H

128 Chest of Drawers for VCR Tapes

N.F.S.

15D X 30L X 33H

Courtesy of Michael and Linda Patterson

Soft maple with bleached, pickled, and brushed water borne varnish finish.

These pieces were commissioned for a room that didn't have a large enough space for the typical entertainment center. Their design is the result of the client's affinity for Louis XVI style furniture and their request that the pieces be "discreet and simple." The half turnings were accomplished by gluing the two halves of the turning blanks with craft paper between them. After turning they were split apart at the paper seam with a mallet blow to a carefully placed chisel. The quarter sections of the three quarter turnings were sawn from the blanks, reattached with double sided tape prior to turning, and pried away afterwards. The frame and panel doors are constructed with haunched, through mortise and tenon joinery. The carcass and drawers are hand dovetailed.



Tim has been buying, restoring, and selling antique furniture for over 20 years and has been building furniture in traditional American styles since 1986. He established the Fourth Street Guild, a cooperative-type woodworking shop and Complements, a unique store specializing in handmade furniture by woodworkers of the past and present.

PAT JUETTNER

1278 Wilderness Trail

Eagan, MN 56424

H (612) 452-8674

129 Five Board Bench

N.F.S.

Spanish cedar with shellac and glaze finish.

12D X 24L X 18H

130 Collection of Swedish Belt Knives

As Marked

Chris Thompson collaborated with Pat in making these traditional Scandinavian knives.

131 Windsor Chair

N.F.S.

Basswood, red oak, and maple with milk paint finish.

20D X 20L X 30H

Pat has been woodworking for pleasure for ten years. His primary interest is in traditional furniture, and he enjoys using hand tools where ever possible.

HARVEY LANGSETH / STEPHEN J. SPELTZ

Harvey Langseth
Langseth Woodcarving
514 Bennett
Minneiska, MN 55910
W/H (507) 689-4208

Stephen J. Speltz
Custom Hardwoods
100 Park Street
Rollingstone, MN 55969
W/H (612) 930-0947

134 Secretary

N.F.S.

Walnut and maple with lacquer finish.

While sitting in the local cafe with Harvey Langseth one day, Stephen Speltz remarked that he wished a customer would both request that the "ultimate" piece be made and be willing to pay for it. That is where the conversation ended. A day later, Harvey came to Stephen's shop to have him finish a corner hutch he had carved. Stephen's wife saw the carving and insisted she wanted to buy it. Deals were made, along with an offer to make the "ultimate" piece. Stephen couldn't refuse, and the secretary was born.

Stephen defends the slide-through dovetails. They are nice looking and should be appreciated. Although they do provide a lot of gluing surface, they are there mainly for looks. The finish is a hand rubbed lacquer - mostly for a nice feel. Walnut, in Stephen's opinion, is a dull wood and needs to have character added to it. Stephen and Harvey hope they have achieved this.

20D X 38L X 84H



Harvey Langseth

Harvey's mother started his carving career in the 30s with home made soap. The small carving chips dissolved easily for laundry. However, when laundry soap became affordable, the carving diminished.

Then in the early 80s, his mother and her brother Paul launched Harvey into carving Kubbestoles (Norsk log chairs). That led to a wood carving shop overlooking the Mississippi river in the southeastern Minnesota town of Minneiska.

Stephen Speltz

In 1979, Stephen owed his father \$300. To pay him back, he purchased a 10-inch table saw and gave it to him. They cleaned out a chicken coop in 1976 and it seemed like a great place to put the saw and get started in woodworking. Stephen found jobs working for cabinet and furniture shops. After making some pieces on his own, selling them, and making a little money, he was able to buy that first saw back from his father.

BOARD MEMBERS OF THE MINNESOTA WOODWORKERS GUILD

137 Library Chest

N.F.S.

Ash with wipe-on varnish finish. Carving done in butternut.

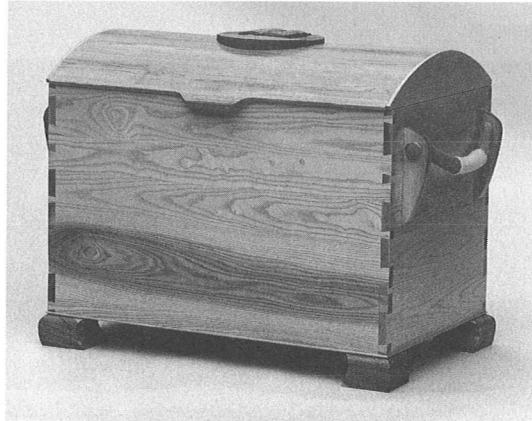
The coopered top consists of 1-3/8" beveled segments glued together and then scraped and sanded with custom made tools. The top's handle was cove cut on a tablesaw, then bandsawed, and finally sculpted with hand tools.

The top is connected to the base with large wooden finger hinges to complement the curved top. A special locking mechanism is inserted into the hinge so that the dowel will not rotate and therefore keep the lynch pins vertical.

The handles were spoke shaved ash. The handle and handle supports were calculated to withstand a weight of 900 pounds! The handle was wrapped with small rope in a French Whipping design as described in Clifford Ashley's book, *The Ashley Book of Knots*, 1944.

The emblem of the Minnesota Woodworker's Guild was carved from a 16/4 block of butternut and mounted on the coopered top.

26D X 42L 31H



This piece is being used to transport library materials to and from monthly meetings for member access. It was started in 1994 five members of the Guild, including Willis Bowman, Rick Berland, Rich Gotz, Pat Juettner, Richard Lagerstrom, and Doug Perlick, met for the first time in Rick's basement workshop. They continued to meet weekly while the chest moved from workshop to workshop, eventually being completed at Rich Gotz's workshop in the spring of 1996. Most members of the group have taken Tom Casper's "Working at the Bench" series. This project presented many challenges that were more easily resolved due to Tom's classes. In addition, each member demonstrated different skills and techniques that were passed on to other members.

DAVID A. MUNKITTRICK

Design Woodworks
1108 Town Hall Drive
River Falls, WI 54022
H (715) 426-5134

138 Bedside Table (one of a pair)

N.F.S.

Mahogany and marble.

The project began when the owner found a beautiful piece of marble in a local antique store. He bought the marble with the idea of having someone build bedside tables using the marble as tops. The empire style design matches an existing bedroom set.

14D X 26L 35H

139 Jewelry Box

N.F.S.

Walnut.

Years ago David was given two very colorful, air dried walnut planks. They sat in his shop waiting for inspiration, which finally came around his wife's birthday. David had just read James Krenov's *A Cabinetmaker's Notebook*, and the design is unashamedly influenced by him. The challenge was to fit the cabinet within the dimensions dictated by the quantity of wood while presenting as much of the beautiful color and grain as possible. The lacewood interior was just for fun.

7D X 13L 17H

David began his woodworking career as a finish carpenter. From there he indulged a childhood fascination with furniture construction by attending vocational school in cabinetmaking and taking classes in art and architecture from the University of Minnesota. After a brief stint in a furniture factory, he set out on his own. His work consisted primarily of cabinets, built-ins, mantels, architectural molding and paneling. However, David's heart has always been with the design and construction of furniture. Through the experiences of the Northern Woods Exhibitions, his involvement with the people at the 4th Street Guild and Complements, his work has continued to evolve to where furniture commissions are 70-80% of his work.

JOHN NESSET

4744 5th Avenue South
Minneapolis, MN 55409
H (612) 827-4039

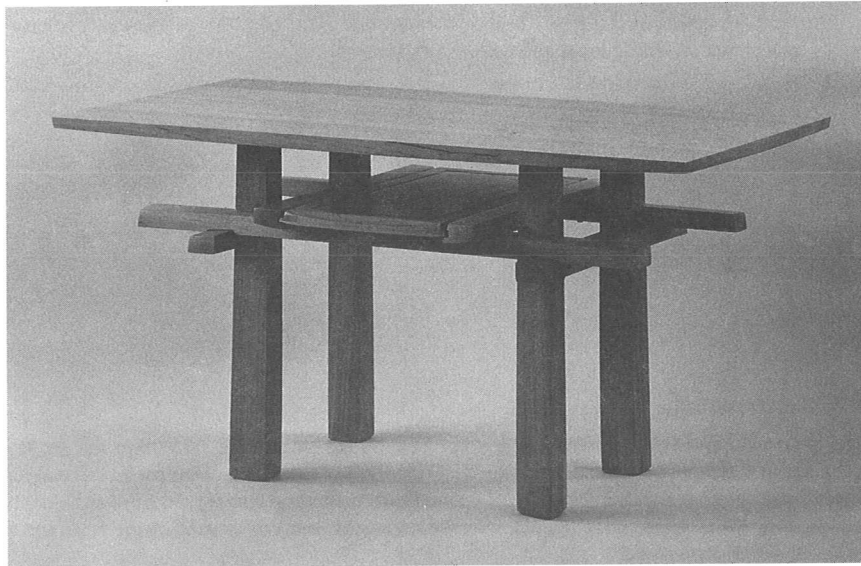
142 **Bench in Pine**

N.F.S.

Single plank of ponderosa pine with water based polyurethane finish.

This bench was an exercise in preserving a wonderful plank of ponderosa pine. It's been in use five years. It has begun to acquire a history. The wedged tenons work in chorus rather than as separate entities. The cut out at the top of the legs allows the hands to grip anywhere along the edge. A bench like this also serves as a coffee table.

16D X 48L X 15H



John Nessel grew up influenced by a carpenter grandfather. By college his hand skills had persuaded him to become a surgeon, and he received acceptance into three medical schools. But by the mid 1970s the lure of art pulled him away, and he returned to woodworking. When in 1983 one of his boxes was a winner at the first annual Northern Woods Exhibition, John made up his mind to pursue woodworking in earnest.

His work has been featured in numerous exhibitions and publications for the past ten years. John's approach to furniture is more that of a sculptor than a woodworker. His work and artistry are focused around his hand tool skills.

STEVE PLOUCHER

955 Moonlight Drive
Woodbury, MN 55125
W (612) 429-8544
H (612) 730-0928

146 Cabinet

N.F.S.

Cherry. Interior finished with shellac, exterior finished with Danish oil.

This piece was designed for the study of Steve's home. An oriental feel was chosen to fit the theme of the room.

20D X 73L X 86H

Steve has been an amateur woodworker for about 20 years. He pays the bills working as a clinical psychologist. Woodworking is his therapy. Its concrete nature clearly fulfills his creative needs.

Steve feels privileged to be able to work with beautiful woods. He also feels a responsibility to do the wood justice when he is creating a piece. The panels for the frame and panel doors are cut from 14-inch wide cherry boards that he bought at a farm auction near Albert Lea, Minnesota, about 15 years ago. He was just waiting for the right project to use them.

PETER RIBOTTO

110134 Stanford Circle
Chaska, MN 55318
W (612) 949-8376
H (612) 448-5080

147 Butler Table and End Table

N.F.S.

Walnut and soft maple with oil and rubbed varnish finish.

The client desired a butler table and an end table. Although butler tables typically had a removable top tray, the client preferred that the top be permanently affixed.

Butler Table: 18H X 31W X 45L

End Table: 23H X 21W X 26L

148 Two-Door Cabinet

N.F.S.

Rift and quartersawn white oak, soft and hard maple with oil and rubbed varnish finish.

The clients desired a cabinet that would be used primarily to house a bookshelf stereo but that could be easily adapted to other purposes. They also wanted it to blend well with existing pieces, some of which are antiques. The design of this cabinet evolved over several months while I was working on other projects. The resulting style, which leans toward the Arts and Crafts, seemed a logical direction, given the wood being used and what the clients wanted.

18D X 34W X 48H

A self-taught woodworker, Peter has been woodworking in his spare time for approximately 16 years, primarily building cabinets, casework, and furniture. Peter especially enjoys projects that offer unique challenges in design, construction, or finish.

WILLIAM SIGGELKOW

5815 Sumac Lane N.E.

Rochester, MN 56906

H (507) 282-3970

151 CD Cabinet

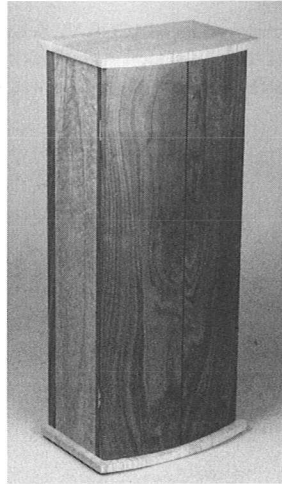
N.F.S.

Walnut and birdseye maple.

This piece was designed and built during a class at Peter Korn's Center For Furniture Craftsmanship in Maine in October of 1995 (actually during last year's Northern Woods Exhibition). It was finished during the winter of 95-96. William's goals for the class were to learn how to use highly figured wood and how to cooper doors.

The two significant techniques used are the coopered doors and the use of tapered sliding dovetails to attach the top and bottom. The purchased plastic inserts were used instead of self-made CD holders for maximum storage capability and "Pop-out" convenience. Other than lots of opinions and some advice from instructors and fellow students, William designed and built it himself.

10D X 14L X 32H



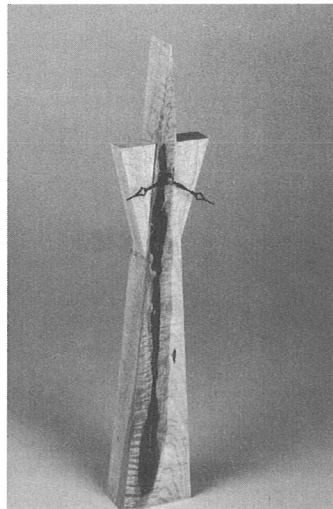
152 Pyramid Clock

\$375

Birdseye maple.

This piece was a leftover wedge of "waste" from a plank of birdseye maple that was lying around the shop for two years. William knew it was going to be something but had no inspiration as to what. Sometime last winter, the thought of San Francisco (and its symbol, the Transamerica Tower) and the San Andreas fault combined in his mind and in the wedge of wood. The result is this clock, titled "Pacific Time."

2D X 4L X 22H



William has been doing woodworking since childhood. He started making furniture thirty years ago as a hobby. He retired five years ago and started selling candleholders, boxes and other small items in galleries and gift stores (including Davlin's). This has resulted in some furniture commissions. William works alone out of a basement workshop. His driving interest is in highly figured and interesting wood (crotch walnut, curly and birdseye maple, flame and curly cherry, etc.). William prefers to not use stain and tries to avoid using oak.

MEL TURCANIK

20 First Street N.E.
PO Box 427
Kasson, MN 55944
W/H (507) 634-7570

156 Jewelry Box

\$540

Cherry and birch with French polish shellac and oil finish.

This piece is the interaction of at least 10 bowl forms. Mel finds the smooth curves to be quite sensual and especially pleasing for a piece that is expected to be handled in daily use. Each of these individual bowls has its own character which only comes alive when it is put in place with the rest.

11Dia X 12H

Mel is essentially self-taught with a lot of help from the members of the Minnesota Woodturners Association. He is a member of the Southeast Minnesota Visual Artists and has his work continuously displayed in their gallery in Rochester, Minnesota.

DON WATTENHOFER

56312 Horizon Drive
Fridley, MN 56421
W (612) 572-9020
H (612) 572-1045

157 Bookcase Headboard

N.F.S.

Cherry (solid, veneer, plywood).

The piece features raised panel sides and front with four-poster construction. The lower interior is equipped with unique shelf drawers that open from the sides. The upper bookcase section is divided into three areas without any closure. The exposed horizontal surfaces are veneered in a parquet pattern. The board spanning the back posts above the top shelf has shell and vine carvings. The four posts have both the tops and bottoms turned. The bookcase area is closed off on the two sides by miniature turnings in the same style as the adjacent portions of the main posts.

The piece was designed as a wedding gift for Don's daughter and son-in-law. The piece uses some detail features found on an 18th-century four-poster bed.

14D X 62L X 55H



158 Urn

\$250

Walnut.

The piece is turned from one piece of wood and features a threaded lid.

5Dia X 14H

Don began woodworking as a child in the mid-fifties making toys from scraps of his older brother's projects. The hobby intensified after he married and found he could fill his home with quality furnishings for much less than the ready-made variety. Some of Don's major projects include: a 16' SK run-about, a full set of kitchen cabinets, a wooden staircase with thirty turned balusters, a table and chair set, and numerous turned objects. Don is the vice president of the Minnesota Woodturners Association. While woodworking has been mostly a hobby, Don occasionally makes custom pieces, and his turnings are sold at Davlin's.

WOODWORKERS

Woodcraft

Since 1928, Woodcraft has been supplying woodworkers with the finest top-quality tools, books, and supplies from around the world. Cabinetmakers, carvers, turners, hobbyists and professionals count on Woodcraft for the best!



- Over 5,000 Products
- Hand and Power Tools
- SWISS MADE® Carving Tools
- Local Shopsmith® Dealer
- Tool Sharpening Service
- Classes & Seminars
- Cabinetry Hardware
- Free Demonstrations
- How-to Books and Videos
- Lumber and Specialty Woods
- 90 Day Guarantee
- Woodcraft Credit Card
- Major Credit Cards Accepted
- Gift Certificates Available

Store Hours

Mon. thru Wed. & Fri. 9AM - 7PM
Thursday 9AM - 9PM
Saturday 9AM - 6PM
Sunday NOON - 5PM

Where to Find Us

Woodcraft
Plaza at Oxboro
9741 Lyndale Ave South
Bloomington, MN 55420

COUPON

**We'll Give You
\$10 OFF
Any Purchase Over \$50**

We're sure you'll agree Woodcraft is the most complete, quality woodworking tool store anywhere, so we will give you \$10 OFF any purchase of \$50 or more, now through December 31, 1996 with this coupon. Offer good on original purchases only at the Bloomington Woodcraft store. No mail orders. May not be used in combination with any other coupon offer. Limit one coupon per person per visit. No cash value.

Sponsors of *The Best Handwork Award*



3815 East Lake Street • Minneapolis, MN 55406

PHONE 612-721-6661

1-800-678-6062

FAX 612-721-6572

NEW
MACHINERY
PORTABLE TOOLS
SUPPLIES
TOOLING
for working with wood & plastic
Leasing Program



USED
MACHINERY
APPRAISALS
LIQUIDATIONS
CONSIGNMENTS
Parts & Service

- COVERING THE UPPER MIDWEST WITH YOUR MACHINERY NEEDS -

POWERMATIC [®] *III* [®]

Timesavers [®]
THE FINEST FINISH IN THE WORLD.

Mini Max
scmi

PANEL SAWS AND PANEL ROUTERS

"Jorgensen"

C.R. ONSRUD

BOSCH

DYNABRADE

These Machines, Portable Tools & Supplies, As well as many other manufacturer's items can be seen on our show floor

DELTA
A Pentair Company

PORTER-CABLE
PROFESSIONAL POWER TOOLS

Lemmon & Snoap Co.

onsrud cutter inc.

PRIMARK TOOL GROUP TM
MAGNA PRO • LSP • ONA • TOOLS • DMI
MAGNA • FOREST CITY • PAWPERA

RITTER
MANUFACTURING, INC.

Northfield

Whirlwind

3M

WKW TM

Wadkin

Sponsors of *The Most Technically Accomplished Award*