

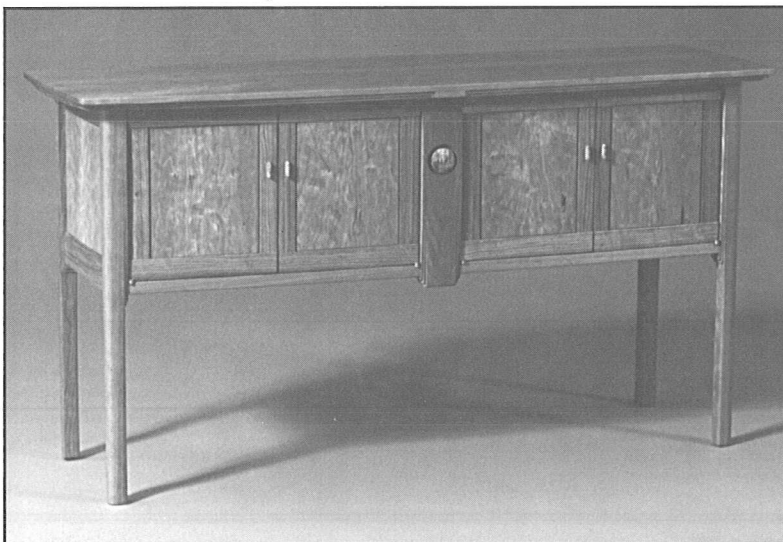
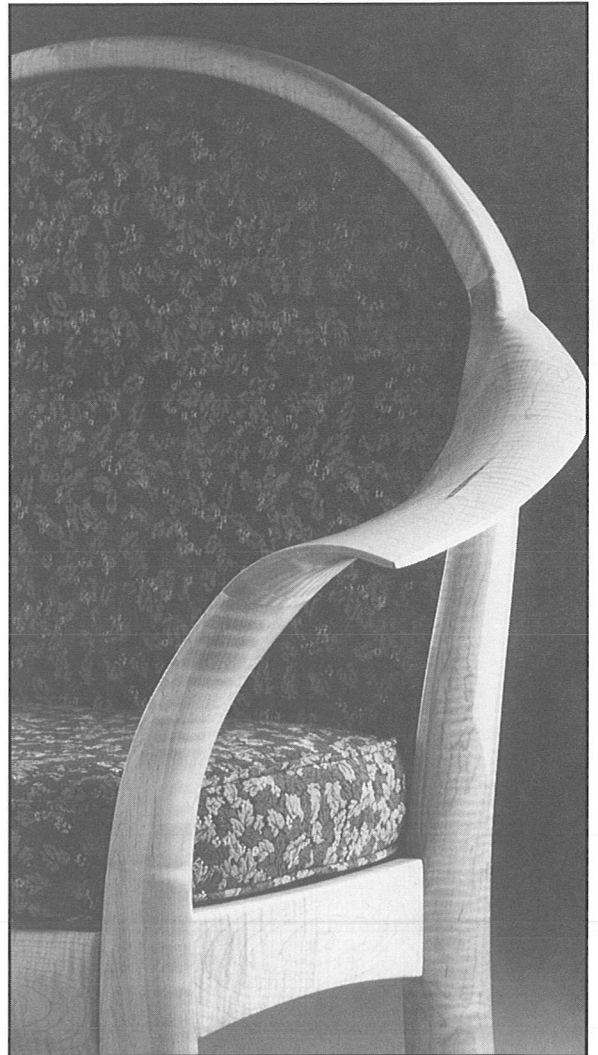
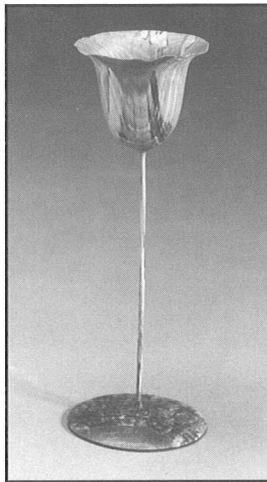


The Minnesota Woodworkers Guild

presents the fifteenth annual

W NORTHERN WOODS EXHIBITION

A DISPLAY OF FINE WOODWORKING



Southdale Center, Edina, MN - October 16 - 19, 1997

Hosted by Davlins and Southdale Center

This activity is made possible, in part, by funds provided by the Metropolitan Regional Arts Council (MRAC) and the Banfill-Locke Center for the Arts through a grant from The McKnight Foundation and an appropriation by the Minnesota Legislature.

WELCOME TO THE NORTHERN WOODS EXHIBITION

Northern Woods is an annual woodworking show and competition sponsored by the Minnesota Woodworkers Guild and hosted by Davlins and the Southdale Center. The show provides an opportunity for Guild members to display and discuss their craft. More importantly, it gives the general public an opportunity to view the best in high quality woodworking design and construction. The pieces on display are more than furniture. They are works of art. Enjoy the show!

NORTHERN WOODS EXHIBITION COMMITTEE MEMBERS

Ron Betcher	Craig Borgmann
Dave Boulay	Willis Bowman
Tom Caspar	Richard Gotz
Jerry Lilja	Dave Looney
Ross Peterson	Peter Ribotto
James Tracy	Don Wattenhofer
Maxwell Moon	

If you have suggestions or comments about the show or would like to help with next year's show, please contact a committee member.

We would like to extend our sincere thanks to Lund's of Minnetonka for donating the refreshments for the awards night reception.

To view additional pieces of work from the past five years of the Northern Woods Exhibitions, please view the official website of the Minnesota Woodworkers Guild at <http://www.wavefront.com/~jzinsli>

SOUTHDALE An American Original. A Minnesota Tradition.

Southdale is pleased to host the Minnesota Woodworkers Guild's Fifteenth Annual Northern Woods Exhibition. We anticipate many positive responses from our customers who appreciate the arts.

This show displays the high level of artistic talent the Minnesota Woodworkers Guild represents. The pieces in the show are made by hardworking, dedicated artisans who appreciate the traditional skills required to work with wood. There are many factors involved in the creation of the pieces on display, and each one is unique to its own creator's personality and interpretation. We hope you will appreciate this effort as you view and admire the pieces. Your most outstanding impression will undoubtedly be that of the quality of workmanship and design which you will see throughout the show.

We thank the Minnesota Woodworkers Guild for choosing Southdale as the site for this exhibition and wish its members the best of shows and much future success.

Paul Skram
Property Manager
Southdale Shopping Center

JOSEPH R. ALDRICH

Bridgewater Furniture Maker

13248 Gates Avenue

Northfield, MN 55057

H (507) 664-0891 W (507) 645-7434

101 End Table

Inquire

Figured Maple, Fiddleback Makore, Faux Pearwood, Cherry, and Ivory.

The table was made while Joseph was at the Center for Furniture Craftsmanship in Maine. He wanted to do a radial match, but wanted more challenge for perfection. While few pieces of furniture are ever "perfect", Joe aimed for technical perfection in his seam and points. The inner star is ivory from an old piano key. The brown star is fiddleback makore, the white star is figured maple, the salmon field is faux pearwood, and the banding and base are cherry. A veneer saw and cabinet scrapers were used on the top.

24Dia x 24H

102 Unity Candle

Inquire

Cherry and Brass.

The unity candle was an inspiration while Joseph was at the Center for Furniture Craftsmanship in Maine. With his upcoming wedding on his mind, he wanted to create something fluid, beautiful, and meaningful. With a strong Christian background, he places marriage on the highest pedestal. The three legs supporting the unity candle represent himself, Mandeline (his wife), and God. The helix surrounds the candle the way God's love surrounds their marriage. The end design was a direct result of all those things.

23Dia x 73H

Joseph attended a twelve week course at *The Center for Furniture Craftsmanship* in Maine during the winter of 1997 and is now operating his own custom furniture shop in Northfield called *Bridgewater Furniture Maker*. Joseph and Mandeline were married two months ago on August 16th.

JIM ANDERSON

BrindleWood Arts & Crafts

1553 Dague Avenue SE

Buffalo, MN 55313-4706

H/W (612) 682-5710

103 Hall Table

N.F.S

Figured White Oak.

Jim chose the simple lines of Mission style furniture as the perfect format for this beautiful figured white oak. After finding this unusual oak, Jim knew that he had to build a piece of furniture that would show off it's remarkable figure.

11D x 48L x 30H

104 Tine (Norwegian bentwood box)

\$350

Cherry, Maple and Cane.

Jim was inspired by an 18th century tine at the Vesterheim Museum in Decorah, Iowa. Many tiner were brought to this country with immigrant families and rarely are any two tiner built alike. Jim found the Vesterheim tine unique because of the handle treatment and he wanted to build a tine of this style in a fine hardwood.

His love of wood, its warmth, look and feel, inspired Jim to take up woodworking. Although many styles of woodworking interest Jim, he tends to favor the strong and simple lines of Shaker and Mission style furniture. Jim's ethnic heritage has motivated him to build tiner and other Norwegian bentwood pieces. Although his goal

RON BETCHER

2871 Humboldt Avenue South #22
Minneapolis, MN 55408
W/H (612) 822-6022

110 Spindle Prairie Chair with Footstool

Inquire

Quartersawn White Oak.

The wood for this piece came from several 100+ year old white oak trees that were rescued from being bulldozed and burned at a warehouse construction site. These pieces are part of a larger living room suite reminiscent of furniture in the 1909 L&JG Stickley catalog.

Piece contributor: Mary Kohanek for the upholstery

38W x 42L x 29H (chair), 14W x 19L x 14H (footstool)

111 Coffee Table

Inquire

Quartersawn White Oak.

The wood for this piece came from several 100+ year old white oak trees that were rescued from being bulldozed and burned at a warehouse construction site. These pieces are part of a larger living room suite reminiscent of furniture in the 1909 L&JG Stickley catalog.

22W x 48L x 17H

Ron has been involved in woodworking for over half of his young life as a hobbyist and in the past few years as a professional. He is currently studying architecture at the University of Minnesota. Ron's main interest is in designing and building furniture, the beauty of which lies in its practicality, functionality and simplicity.

JIM BOLES

4640 139th Street West
Savage, MN 55378
H (612) 894-2955 W (612) 519-4546

112 Mission-Style Chair

\$850

Red Oak and Glass.

The chair is made of Red Oak and is constructed with mortise and tenon joinery. The chair is the signature piece of my company *Jim Boles Designs*, and represents over six months of planning to be able to produce this chair in a limited production fashion. The glass elements were created using both kiln formed and molten glass from a furnace. The glass for the chair back was kiln-formed by hand by cutting sheet glass and fusing it together on a curved mold. The glass rods were done by placing molten glass into a star shaped optic mold, then removing the still hot glass from the mold and adding blue glass powder to the tips of the star shape. This glass powder later produces the blue swirls when pulling and twisting the hot glass into its final rod shape. The glass rods were created by Becker Art Glass in Bethel. Ackerman's Furniture Service of Burnsville fashioned the upholstered seat covering.

17W x 19D x 51H

113 Six Panel Room Divider

\$3000

Cherry and Glass.

The room divider is made of cherry and is a basic frame and panel construction. The hinges are a unique element that Jim designed after not being satisfied with any type of manufactured hinge on the market. The hinge enables the piece to be customized because any type of material can be used in coordination with other interior elements in the home or office. The fabric hinge was created by Marge Wilson. The glass was created using a kiln and glass fusing technique. Any style of glass design from Tiffany-like to the totally abstract can be made in the kiln.

80W x 80H

Jim has always loved working with wood and has also had an ongoing interest in glass. Realizing for some time that woodworking as a business is very difficult, he looked for a way to make his work unique before going into

JAMES A. GAG

4724 Debra Court
Shoreview, MN 55126-5802
H (612) 484-1933

117 A Tall Hall Cabinet

Inquire

Quartersawn Red Oak.

This piece is a slender cabinet with two raised panel doors at top and bottom and two drawers between. It is made of quartersawn red oak taken from a backyard tree and air-dried. The tree had been destined for the wood chipper and fireplace after it became a threat to the home built in its shade. The cabinet will be a wedding gift to the maker's daughter and her fiancé. It is hoped the piece will be a reminder to two fine young people that, if one is willing to expend skilled effort, one can find things of beauty and value where others see little of worth.

14W x 12D x 60H

James is an amateur and sometimes professional woodworker who enjoys the avocation much more than the vocation.

RICHARD J. GOTZ

415 Wedgewood Lane North
Plymouth, MN 55441-5541
H (612) 544-7278 W (612) 536-4198

118 Single Drawer Shaker Sewing Table

Inquire

Birdseye Maple with Birch Knobs and Finished with a Wiping Varnish and Beeswax.

The single drawer Shaker sewing table gracefully expresses the Shaker's principles of economy, utility, simplicity, and order. The push through drawer can be accessed by two sewers. The single drawer in this piece has matching grain around all four corners that was achieved by re-sawing a board, turning the two pieces inside out, and then cutting out the four sides. The drawer dovetails were cut with very thin Japanese chisels.

21W x 18D x 26H

119 One Hundred Cigar Humidor

\$950

Butternut, Walnut, Birdseye Maple, Spanish Cedar, and Mahogany.

The cigar humidor is more than just a box. It is constructed so that the constant internal 70% humidity does not destroy the joinery. It must also be constructed with a tight fitting lid to prevent the moisture from escaping. The lid floats in the frame to allow for expansion. Spanish cedar is used internally as it is moisture resistant and provides a pleasant aroma. Internal trays are used to separate the cigars to prevent the transmission of flavor from one type of cigar to the next.

10W x 17L x 9H

Rich has been working with wood for over twenty-five years, but has become more intent in recent years since joining the Guild in 1993. He has been a member of the Guild for four years, and is currently serving as President. On the odd weekend when he isn't making sawdust or chopping dovetails, you'll find Rich and Kate on Minnesota's and Wisconsin's northern lakes in search of the elusive muskie.

- 126 Walnut Jewelry Box** **\$150**
 Under the lid is a maple lift out tray for small earrings and rings. Beneath the tray is a deeper compartment for larger jewelry. Natural lacquer finish.
 5.25Dia x 3.75H

Jim first became interested in woodworking around age twelve and has been working with it ever since. What started as his hobby, became his trade. He has worked in several shops specializing in custom work, both residential and commercial. Over the past two years, he has concentrated on woodturning, finding that every piece has its own personality as well as its own challenge.

TIM JOHNSON & TOM CASPAR

Complements

3020 West 50th Street
 Minneapolis, MN 55410
 W (612) 378-2605 H (612) 824-1536

- 127 Dining Table** **\$2195**
 Hard Maple with hand brushed polyurethane varnish finish
 42W x 98L x 29.5H

Tim has been buying, restoring, and selling antique furniture for over twenty years and has been building furniture in traditional American styles since 1986. He established the *Fourth Street Guild*, a cooperative-type woodworking shop and *Complements*, a unique store specializing in handmade furniture by woodworkers of the past and present.

Tom is a professional furniture maker at the *Fourth Street Guild* and his furniture can be seen at the *Complements* store. He teaches a series of three courses on using hand tools called the *Unplugged Workshop* and he feels it is a great pleasure to share the mysteries of this craft with others. He is also a contributing editor to the *WOODWORK magazine*.

PAT JUETTNER

1278 Wilderness Curve
 Eagan, MN 55123
 H (612) 452-8674

- 128 Shaker Desk** **N.F.S.**
 Cherry, Poplar, Oak and Pine, Finished with Varnish, Shellac and Satin Oil Paint.
 This piece was designed based on an article seen in an interior design magazine.
 24W x 40L x 27H

- 129 Gnome Family** **N.F.S.**
 Basswood with Acrylic Paint
 Both man and woman were carved in a class presented by Chris Thompson.
 7Dia x 15H

- 130 Norwegian Knife** **N.F.S.**
 Valbjork (Whale Birch) and Leather Sheath.
 Made in a class at Vesterheim (Norwegian museum in Decorah, Iowa).
 8L

Pat has been woodworking for pleasure for eleven years and has a shop cooperative in downtown St. Paul. His primary interest is in traditional furniture, and he enjoys using hand tools where ever possible.

ALAN LACER

667 Harriet Avenue
Shoreview, MN 55126
H (612) 483-6428

- 134 **Black Rose Goblet** \$325
Madrone Burl, Bleached and Dyed Black.
This goblet is turned very thin and rapidly dried. Alan has done these for several years but has never worked up the courage to dye one—although he has often bleached these a bone white. The movement of the drying piece adds a dimension that is not forced upon the work by the maker—but by the releasing tension in the wood.
3.5Dia x 9H
- 135 **Russian Spaghetti Box** \$175
Spalted Maple.
This box holds approximately one pound of spaghetti and is intended for use.
4Dia x 12H
- 136 **Mahogany Platter** \$160
Honduran Mahogany.
16Dia x 2H

Alan has been interested in woodturning since the mid-1970's. His initial interest in working wood started while he was studying philosophy in graduate school at the University of Oklahoma--he was drawn to do something with his hands as well as his head. Much to his surprise, working wood-- especially with a lathe--involves as much mental energy as anything he was exposed to in his studies of philosophy. He feels absolutely convinced that his background in philosophy has considerably aided his development as a craftsman. Although he has made many functional pieces, from porch columns to crochet hooks to chair parts, the bulk of his work is composed of pieces that are primarily decorative. This includes wooden bowls, plates, goblets, and lidded boxes--all of which may have some functional aspect but are created to enjoy the visual and tactile properties of the wood and form. Even though he sometimes uses exotic woods in his work, the largest percentage of his materials come from local or native woods to Oklahoma, and now as a new resident of Minnesota, of its local woods. This includes such species as Osage orange, walnut, buckeye, soft maple, persimmon, pecan, sycamore, and box elder. He has recently been exploring the local Minnesota woods of birch and northern maples.

Alan is also heavily involved in the teaching and promotion of woodturning. He has taught or conducted demonstrations in about 26 states and four foreign countries (Ireland, Belgium, Switzerland and Japan) at craft schools, colleges, high schools, businesses, and vo-technical institutions. He has written articles on a number of topics that have appeared in publications in the United States, Switzerland, Belgium, England, and New Zealand. Also, from January 1991 until January 1995 he served as the national president of the American Association of Woodturners. He was recently named as a contributing editor to the *American Woodturner*.

DAVID P. LEIGHLY

2307 58th St. NW
Rochester, MN 55901
H (507) 281-5527 W(507) 288-8155

- 137 **Rocking Chair** Inquire
Maple and African Padauk.
This chair is the result of the pursuit of a form that expresses the nature of the movement embodied by a rocking chair. A seat and back component of one radius is engaged in a base of a larger radius. The motion of the seat element is both enabled and restricted by the base.
20W x 36L x 33H

This project has opened up for Jerry a new dimension of using shapes and curves that will impact the development of his own designs. This project has also brought new skills and hand tools to his shop that allow him to shape wood in ways that are anything but new in the world of furniture making.

21D x 22L x 40H (back) x 17H (seat)

Jerry has worked wood as an avocation for more than twenty years. In the last four years he has become more focused on designing and building furniture as a part time occupation. The rest of his work life is as a clinical social worker.

CRAIG LOSSING

Woodturning Studio
47 Fairmont Drive
Lino Lakes, MN 55014
H/W (612) 785-4194

141 Suspended Vessel

N.F.S.

Maple Burl, Rosewood (Cocobolo) with Ebony Spear and Lid.

Craig enjoys turning hollow vessels that are not always able to stand on their own and so a piece of natural edged cocobolo seemed to be the ideal suspension vehicle.

7W x 6D x 14H

Craig is a professional woodturner whose award-winning work is sought after by fine galleries and knowledgeable collectors. His creations range from organic forms and visionary vessels to whimsical toys and functional objects. He is a recognized master in his medium and offers his work to the public through acclaimed juried art fairs and select prestigious galleries. Craig shares his vast knowledge and creative techniques with others through hands-on workshops and lectures and by writing 'how-to' articles for national magazines. Craig resides with his wife and three children in the town of Lino Lakes, Minnesota, just 20 miles north of Minneapolis.

PHILIP MARTIN

21105 Imperial Avenue
Forest Lake, MN 55025
H (612) 464-3912 W (612) 736-9572

142 "Saros" Experimental Rocket

N.F.S.

Basswood, Aircraft Plywood, Cardboard and Phenolic Impregnated Cardboard.

This rocket is a scale-up of the first Estes rocket Phil ever built and represents a class of rockets known as sounding rockets, that is, rockets utilized in meteorological studies. The aesthetic elegance of the sounding rocket form enticed Phil to build the "Saros" sounding rocket scale-up.

Construction of high power rockets involves all disciplines of science and engineering. These are fully flight worthy and frequently fly at supersonic speeds. It is, therefore, essential that the aerodynamics, structure, and balance of the rocket be designed properly. An extensive design analysis takes place before any construction begins. This analysis frequently involves shifting the mass about the rocket to achieve the correct balance. Quite often the rocket carries a number of electronic payloads which need to be packaged efficiently and are, typically, mounted on plywood substrates. In the mid-power range, of which this rocket is an example, the bulk of the structure is constructed of wood. This is a very fine material with which to work, but all pieces must be made to very close tolerances. All wooden parts of the rocket are of basswood except for the fins, which are of aircraft plywood. Basswood provides a nice balance between strength and weight. The tubing, in this case, is cardboard and phenolic impregnated cardboard. The internal components include an accelerometer, deployment devices, and parachutes to return the rocket safely.

4.5Dia x 101H

Traditional woodworking has a very strong appeal to Phil; however, a large share of his woodworking is spent on "pattern making" for high powered rockets. He has been flying rockets for 33 years and high power for the last twelve. Building rockets packs all the engineering, fabrication, and artistic skills into one package. For

146 Box in White Oak with Two Way Sliding Cover **\$450**
White Oak with a Lacquer Finish.
This box is also a production version of one of John's hand made boxes. However, the curved details are hand done to liven the form and individualize the piece.
8.125W x 20.75L x 2.125H

147 Cantilever Bench with Spring **\$12,000**
Hickory and White Oak finished with Water Based Polyurethane.
Hickory is the densest and strongest of North American hardwoods. In this piece, John wanted to emphasize those qualities and display the full magnificence of this rare plank. The form originated with the concept of a single pillar connecting two horizontal elements. The grain of the plank suggested the horizontal elements be of different length and the pillar be placed off center. The effect amplifies the precarious grace of the form, and, when the bench is put to use, articulates the tremendous rigidity and strength of the hickory.
15W x 78L x 14H

John Nessel, a resident of Minneapolis, a devoted father and chronic idealist, who gave up a career in medicine and took up meat cutting to pursue art, grew up "making things" out of modeling clay, cardboard, wood, and anything else he could find in the home short on resources and long on resourcefulness. At age six he received his first jack knife. By adulthood he'd developed a strong aversion to handyman projects. Years later (unable to shake his handyman roots and provoked with holiday commercialism) he decided to "make something" for his daughter for Christmas and came face-to-face with the possibilities of furniture as an aesthetic language. His mission since has been to build pieces well-grounded in literal usability from which emerges aesthetic content. He sees his work as being "about" something in a way that a literal form like the Venus di Milo, for instance, is "about" something and not just a pretty statue of a half-naked lady with no arms. The furniture is literal furniture. He means it to be literal furniture and to be used as furniture. It's furniture that without applied adornment addressed concerns basic to the human spirit. He sees it as usable sculpture.

ROSS S. PETERSON

12066 Whitetail Lane
Hanover, MN 55341
H (612) 498-7911

148 Hall Table **Inquire**
Cherry with Oil and Urethane Finish.
This piece was designed to utilize the wood from a cherry tree which had fallen in the old fence-row on his lot. Since the tree was rather small and had started to rot, it became quite a challenge to coax enough useable wood out of what seemed, at first glance, to be an ample supply of wood. Ross admits that it was not a cost effective project!
26W X 15D X 28H

149 Dining Table **Inquire**
Cherry with Oil and Urethane Finish.
This piece was commissioned by a couple whose only guidelines were "four legs and a big slabby top." This leaves a lot to the imagination. The four legs concept was revised to a trestle to offer more versatility in seating arrangements. A lucky find of a book-matched pair of 6/4 cherry planks 14" wide helped with the slabby top requirement.
72L x 42W x 29H

This is Ross' fourth year entering the Northern Woods Exhibition and his sixth year of serious woodworking. While earning his living for 18 years as a structural and ornamental ironworker, he has gradually made the transition to full time woodworking. Ross does commission work and plans to enter the prestigious Philadelphia Furniture Show in May 1998. Ross is now a full-time professional woodworker and would be happy to discuss your project requirements.

symbolizing unity comprised of two opposing elements. Properly lighted, the illumination of the grain changes as one walks past the piece.

20W x 96L

- 153 **End Table** **\$650**
Black Walnut.

The top panel is made from a single piece of wood. The base is of similar construction, but from a board of fifty year old walnut purchased from a collector near Guttenburg, Iowa. The technique is to slice wood from a piece of quartersawn lumber and glue it together after rotating the slices 90 degrees. Though time consuming, this technique allows the artisan to greatly increase the surface area of prized figured woods.

24W x 24L x 16H

- 154 **"Standing Wave" Writing Desk** **\$850**
Ribbon Stripe Sabele Veneer and Wenge.

This parquetry piece was originally designed for the artist's bedroom as a small writing desk. As you move around the table, the light refracted from the top moves and follows the movement of the grain. The title comes from the pattern of a wave arising from the surface.

24W x 48L x 29H

Tom began doing parquetry veneer artwork in 1995 and had his first public showing at the International Gallery of Contemporary Art in Minneapolis in November 1996 through January 1997. He was a "featured attraction" at The Boat Show in the Metrodome and displayed ten foot and sixteen foot wooden fishing boats with inlaid designs including life size game fish. Tom founded Northern Hardwoods Framing in 1980 and supplies specialty framing materials to the stained glass trade. Tom also performed poultry extension work for the Peace Corp in India from 1963 to 1965.

DAVID AND PAULETTE SEVERSON

3206 Adair Avenue NE
Buffalo, MN 55313
H (612) 682-4651

- 155 **Sleigh Bed** **\$2700**
Quartersawn Oak, Plain Sawn Oak and Birdseye Maple

This is a bed of Amish influence, yet of their own design, using, for the most part, nearly century old plain and hand picked highly figured woods. These include a mix of quartersawn oak, plain and birdseye hard maple. A small amount of new oak trim was added to create a somewhat elegant look without losing its rustic charm by allowing the woods imperfections to lend it character.

The wood used in its construction was salvaged from a 1909 rectory which was dismantled piece by piece about ten years ago near Buffalo, MN by the couple. All the lumber used in the rectory was locally grown and milled.

64W x 95L x 56H

- 156 **Mission Style Dining Table** **\$2000**
Quartersawn Oak

The table top is made of 6/4" hand picked quartersawn oak to achieve the best figure possible. The table, like the bed, is made of reclaimed oak of similar origin and history.

36W x 72L x 30H

David and Paulette have been woodworking hobbyists for several years and have gotten more serious about the craft in recent years.

compensate for the lack of a back. A counter size stool was created later as a complement to the short stool.

16W x 13.5L x 18H; 16W x 13.5L x 30H

Jon has been building furniture for 12 years, having first been introduced to some basics and hand tools from third generation furniture makers in Vermont in 1985. His skills have continued to progress from that time to the point where he is now employed full time making and designing custom furniture after leaving the relative security of a career in mental health. He shares retail space with five other furniture makers at *Complements*, a store in Southwest Minneapolis. Jon started out making furniture that heavily relied on hand tools, and has, over the years, made a number of Windsor style chairs using green wood, though desks, dressers, tables and beds have also been in the mix. His early influences were clearly shaker inspired pieces, and he still tends to be drawn to simple American designed furniture styles that complement both antique and contemporary styled decors.

DALE SUILMANN

14133 201st Avenue NW

Elk River, MN 55330

H (612) 441-7574 W (612) 519-7118

160 Pencil Boxes

N.F.S.

Walnut, Honey Locust, White Oak, Red Heart, and Apple.

Although the boxes are based on a traditional design, they are specifically modeled after a design that appeared in *Today's Woodworker* a few years ago. The honey locust lid came from a tree which grew in front of Dale's wife's childhood home (the tree was removed a few years ago). The rest of the wood (except the red heart) is from various places in Minnesota. Most of it was purchased wet and dried in a solar kiln in the back yard. A dozen pencil boxes were given to family and friends last year for Christmas.

10.5L x 2.5W x 1.625H

Dale has been working wood part-time, mostly as a hobby, for the past 4 years. He is self-taught (many books & magazines), except for a memorable two day seminar taught by Tage Frid (Spring '95 at Highland Hardware in Atlanta). Dale has taught at Coe College and has worked as a software engineer in the defense and medical fields for the past seventeen years.

PETER E. SYVERTSEN

3848 Blaisdell Avenue South

Minneapolis, MN 55409

H (612) 822-2315

161 Pendulum Cradle

Inquire

Black Walnut, Cherry with Purple Heart Inlay.

This cradle has seen action in Chicago (Elisabeth Caan, daughter of Fran and Billy Caan) and will soon be occupied by the offspring of Molly and Johnny Hazlett (gender and name unknown – due October 25, 1997). Peter designed and built the cradle during the winter of 1996.

24W x 41L x 42H

162 Bench

Inquire

Purple Heart and Steel.

The bench is constructed of purple heart and hot rolled steel forged with gun metal bluing.

14W x 60L x 16H

Peter has been making furniture as a hobby for about ten years. Every year his "hobby" claims a little more of his time and resources. He now parks his truck in his driveway instead of his half of the garage. (Guess why!) Peter makes his living as a professional actor and writer.

TOM VAN BINSBERGEN

315 13th Street NE
Owatonna, MN 55060
H (507) 451-4769 W (507) 455-0833

166 Queen Anne Style Bonnet Top Highboy

Inquire

Curly Maple and Aromatic Cedar.

All surfaces were hand scraped inside and out to minimize sanding. The flame finials, fans, gooseneck moldings and cabriole legs were carved by hand and the dovetails cut by chisel and hammer.

38W x 19D x 86H

Tom's woodworking experience began in junior high school, continued through college, and partially financed his education. Tom works full time as a cabinet maker specializing in custom frameless cabinets. Each winter, Tom tackles a difficult project for a family member. Each project selected requires skills that are new to his repertoire.

DON WATTENHOFER

5312 Horizon Drive
Fridley, MN 56421
H (612) 572-1045 W (612) 781-5387

167 Nightstands

N.F.S.

Black Walnut.

The piece features raised panel sides and back with a four post type of construction. The front features three equally sized drawers. The top features a veneered parquet pattern with book matched burl veneer in the center. The veneer was hand cut and ironed onto a substrate. The pieces were designed at the request of his wife and will become part of their bedroom set.

20W x 16D x 30H

168 Bowl

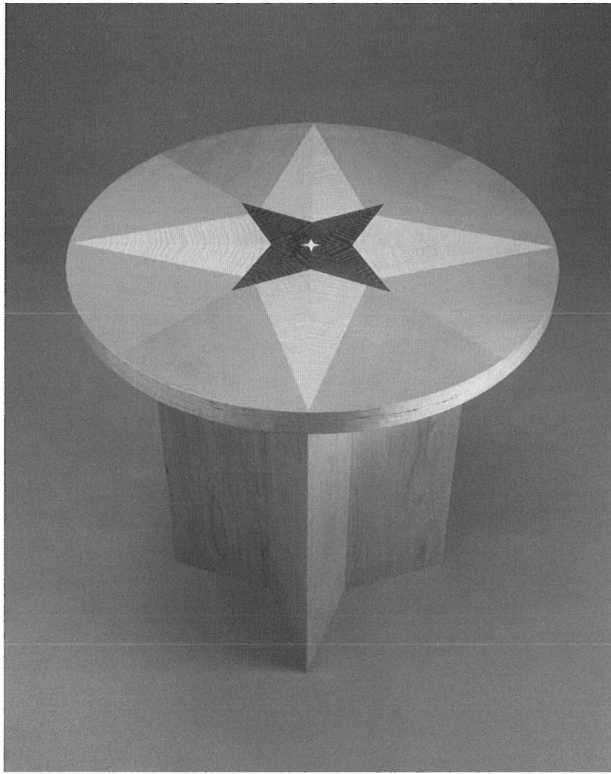
\$150

Black Walnut finished with lacquer and paste wax.

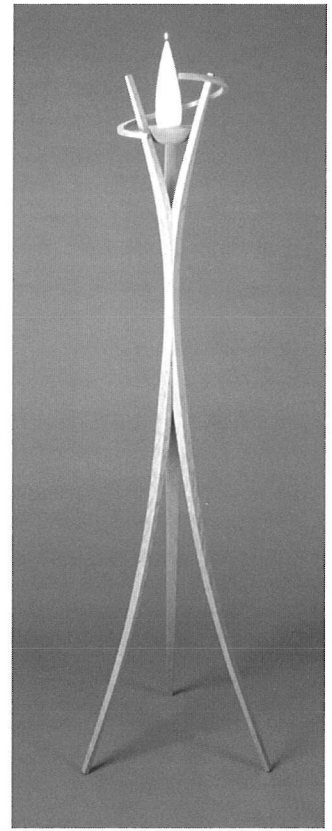
The piece is turned from one piece of wood that was located above the junction of a crotch with the natural edge of the bowl being the wood where the two legs of the Y interfered with each other during growth.

9Dia x 3.5H

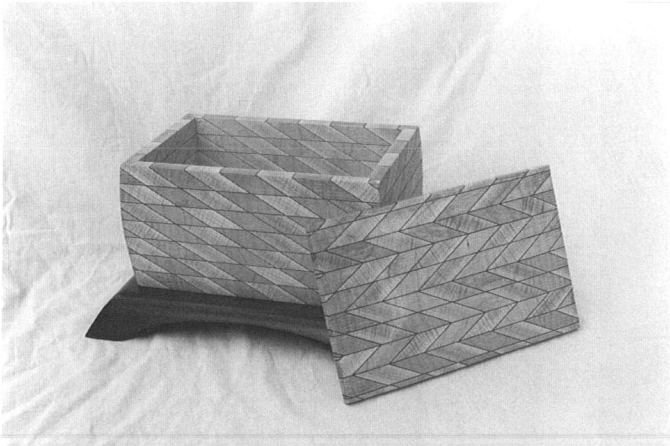
Don began woodworking as a child and bought his first stationary power tool (a Delta 14" bandsaw) with paper route money. The hobby has become a very satisfying way to express his creative instincts. Some of his major projects include a 16' plywood and fiber glass SK runabout; a full set of kitchen cabinets with raised panel doors; a wooden staircase with thirty turned balusters; a round oak table with carved lions head legs; a full set of wooden chairs for the table and a multitude of turned items. He is the current Vice President of the Minnesota Woodturners Association. Woodworking has been mostly a hobby for Don; however, he has occasionally made custom pieces and sell turnings on consignment at Davlin's gift stores.



101. JOSEPH ALDRICH



102. JOSEPH ALDRICH



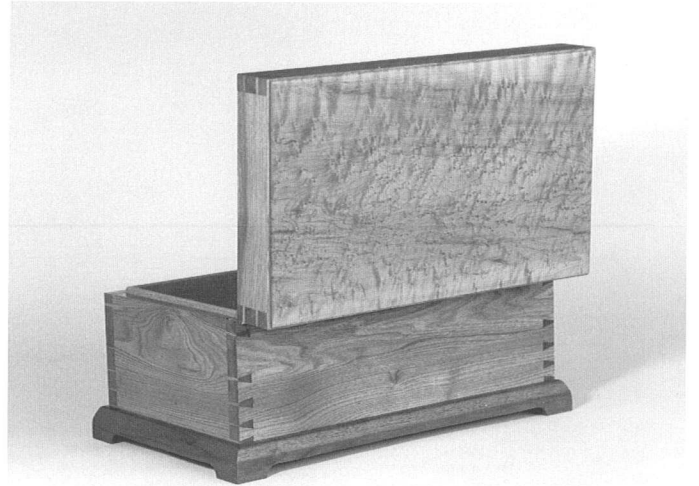
105. ROLLIN BAIRD



106. ROLLIN BAIRD



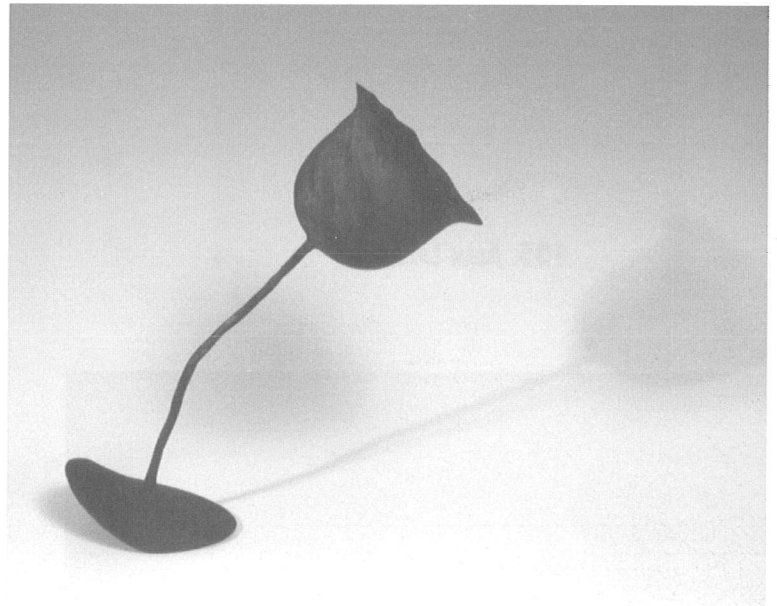
118. RICHARD J. GOTZ



119. RICHARD J. GOTZ



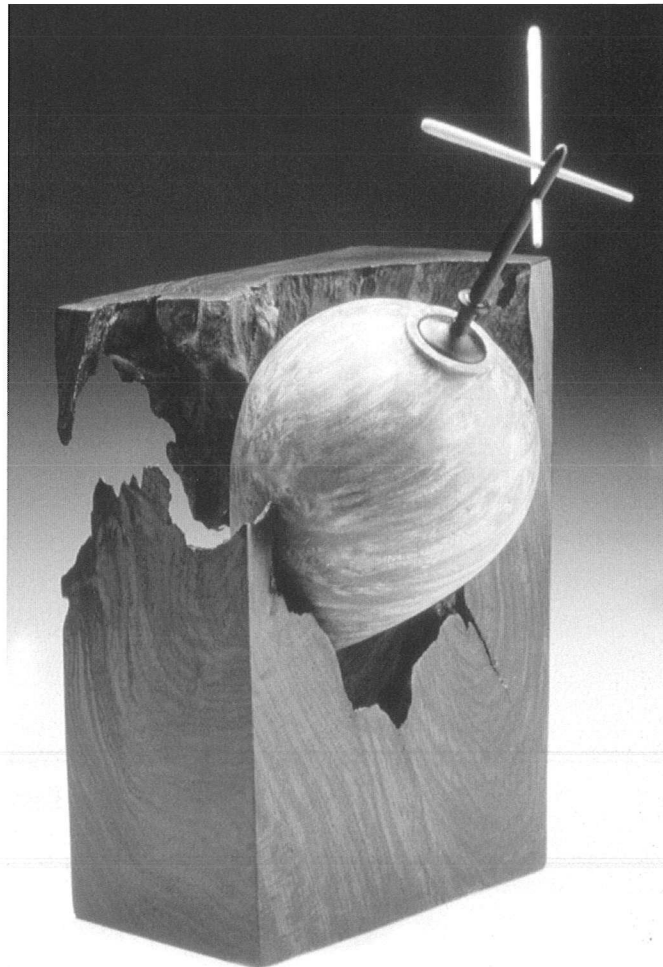
120. DONALD C. GRANDBOIS



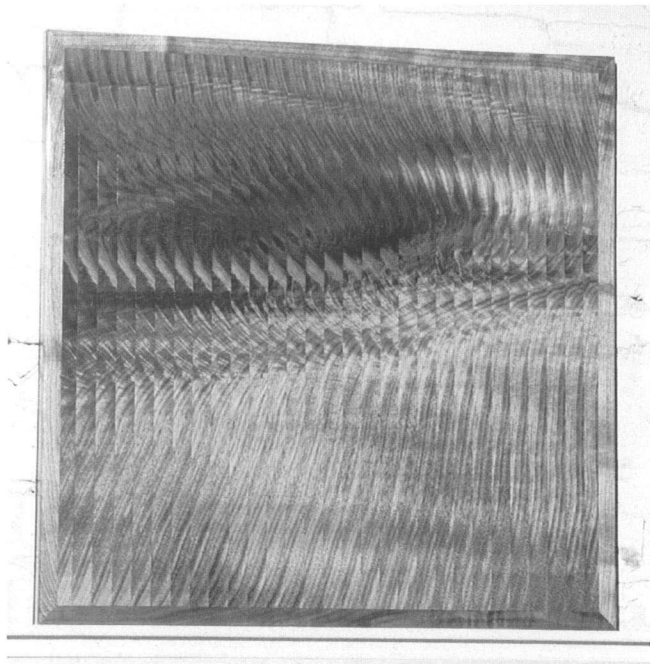
134. ALAN LACER



139. PAUL LEINBACH



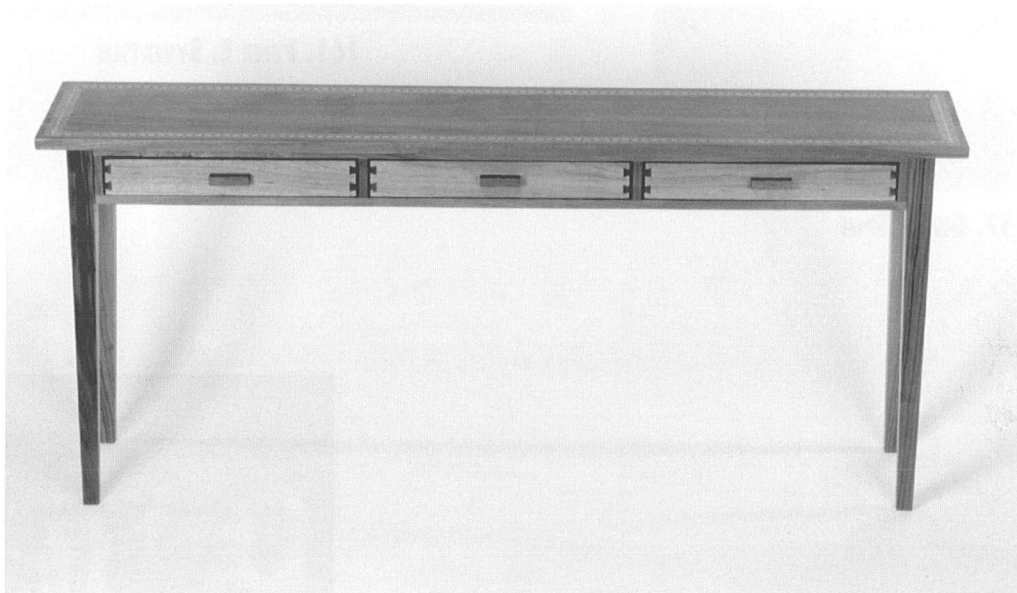
141. CRAIG LOSSING



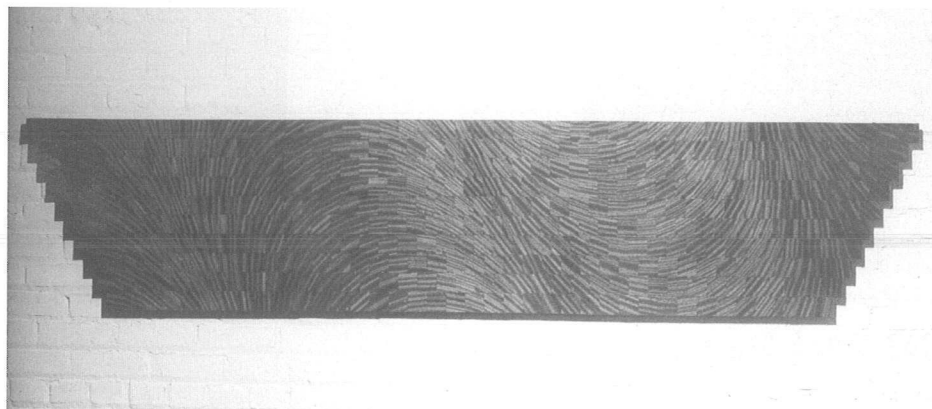
153. THOMAS R. SCHRUNK



151. MARK SABBANN



150. WILLIAM PIKE



152. THOMAS R. SCHRUNK



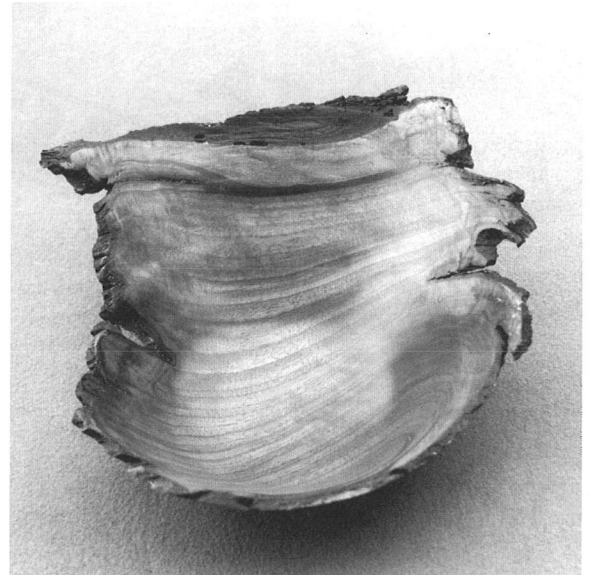
164. MEL TURCANIK



165. MEL TURCANIK

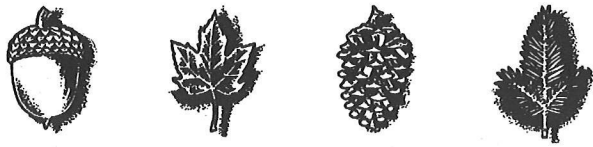


166. TOM VAN BINSBERGEN



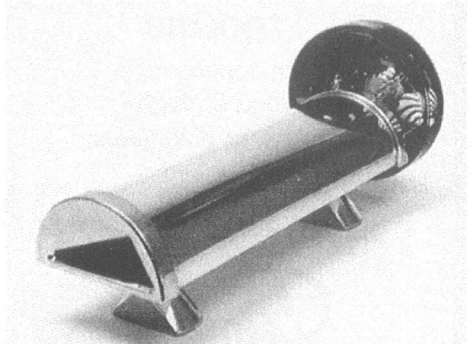
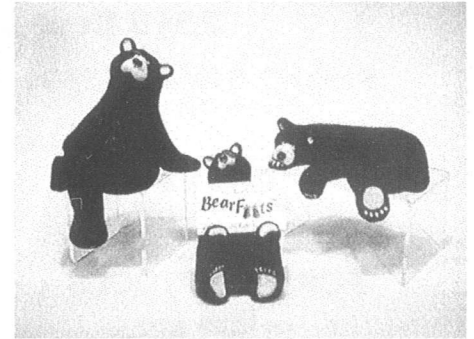
168. DON WATTENHOFER

Sponsors of the People's Choice award



DAVLINS

Fine Crafted Gifts of Wood



Davlin's is proud to sponsor the fifteenth annual Northern Woods Exhibition. Our seven years of involvement with the Minnesota Woodworkers Guild has given us the chance to appreciate the work of some of our state's finest craftspeople. Stop by our store on Southdale's second level by Daytons to see our own selection of fine crafted gift items.

Rosedale

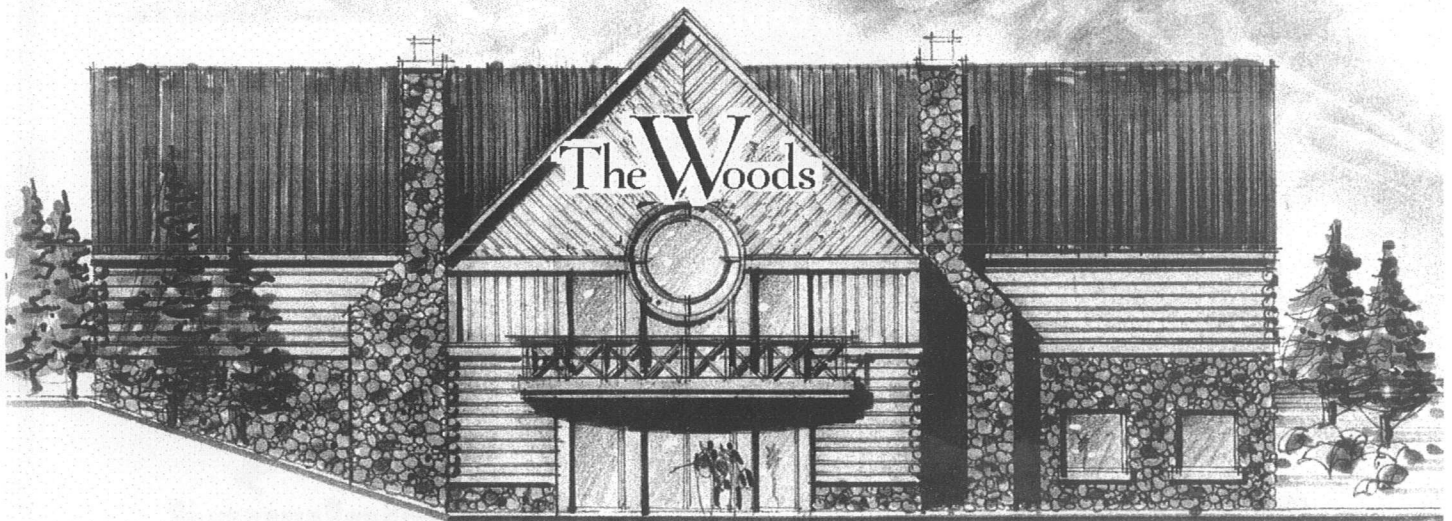
631-2162

Southdale

926-6838

Burnsville

892-3665



Davlin's announces the opening of **The Woods**, our new store in Maple Grove which features all your favorites from Davlin's, plus: pottery, garden accessories, willow furniture, and more. It's just one exit north of Weaver Lake Road on I-94...visit us soon! (Call 416-WOODS for more information.)

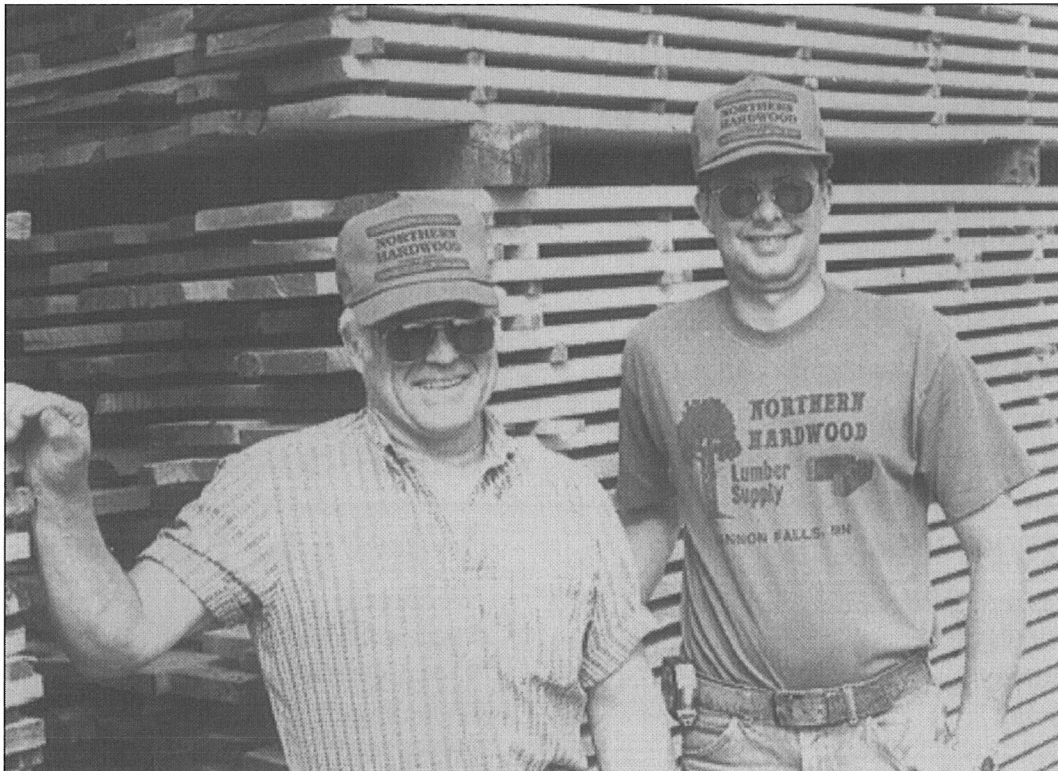
The Woods

MADE BY HAND AND NATURE

NORTHERN HARDWOOD, INC.

Located just East of Cannon Falls off Hwy. 19 on Hardwood Way (watch for the signs).
Open Monday - Friday, 7:30 a.m. to 4:00 p.m.; Saturday, 8-Noon

507-263-5088



Our premium quality hardwood lumber is kiln dried and ready to use for those special woodworking projects.

- Edge-glued panels available.
- Carving stock.
- Featuring most native hardwood species.

All Customers Welcome!



Sponsors of the Best Carving award

Sponsors of the Most Daring Award

Wood Carvers Store & School

— *The Wood Carving Experts!* —

We carry carving tools (3 professional brands), woodworking chisels, turning tools, planes, saws, scrapers, knives, marking & measuring tools, abrasives, clamps, finishes and other supplies. We also have approximately 600 books and plans to instruct and inspire you!

Come in and let us serve you

Our departments include:

- Bench carving*** - full & medium length edge tools, mallets.
- Whittling*** - Knives, palm tools, drawknives, adzes.
- Abrading*** - rasp, files, sand, scrape, sawing & turning.
- Books*** - a wide variety of books on woodcarving topics
- Sharpening*** - Oil, water, diamond, power method, stropping
- Hand Tools*** - Brushes, measuring, marking, planing.
- Bench Accessories*** - Holding devices, tool rolls, study aids.
- Coatings*** - Paints, varnishes, sealers, was, oils, solvents.
- Materials*** - Carving wood, cutout/rough-out, turnings, glass eyes.
- Services*** - Classes on tool sharpening & modifying, cutting manufacturing

Classes are available evenings, Saturdays, and as one week sessions

Arrangements can be made to hold a seminar for your area

*Come to our year end sale
November 3rd, 1997 through January 3rd, 1998*

Wood Carvers Store & School

3056 Excelsior Blvd, Minneapolis, MN 55416

612-927-7491 — fax 612-927-0324

Visit our webpage at <http://wholesalewebpages.com/dir/woodcarvers.htm>



FAST SHIPMENT AND DELIVERY

WIDE RANGE OF INVENTORY

FINE QUALITY CABINET GRADE MATERIALS

MATERIALS SORTED OR SELECTED SPECIFICALLY FOR YOU

COURTEOUS KNOWLEDGEABLE SERVICE

ONE ON ONE SERVICE REPRESENTATIVES

THE INDUSTRY LEADER . . . SERVING THE UPPER MIDWEST

1335 CENTRAL AVE. ♦ MINNEAPOLIS, MN 55413

612/789-3521 ♦ 1-800-933-1335 ♦ FAX 612/789-9625

OFFICE HOURS	YARD HOURS	SATURDAY HOURS
7:30 am - 4:00 pm	7:30 am - 3:45 pm	8:00 am - 11:45 am

