

S I X T E E N T H

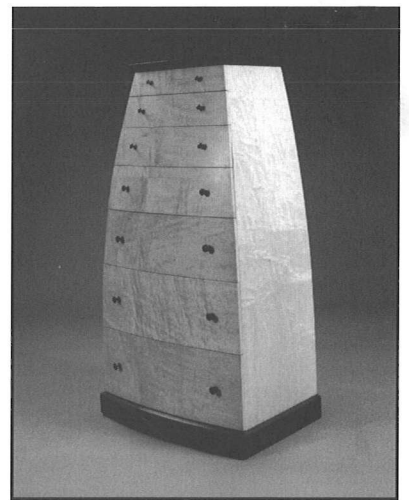
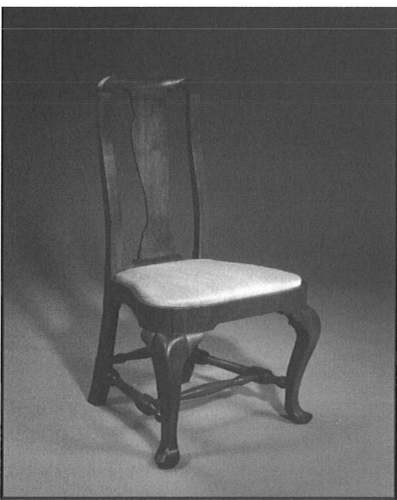
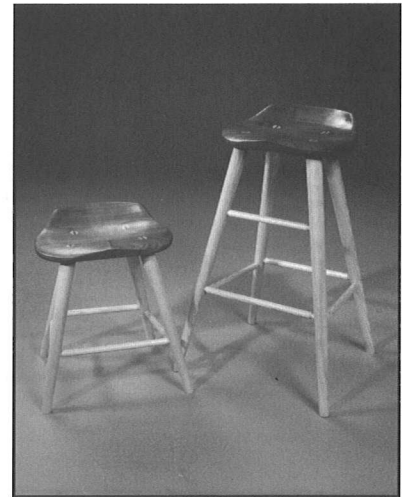
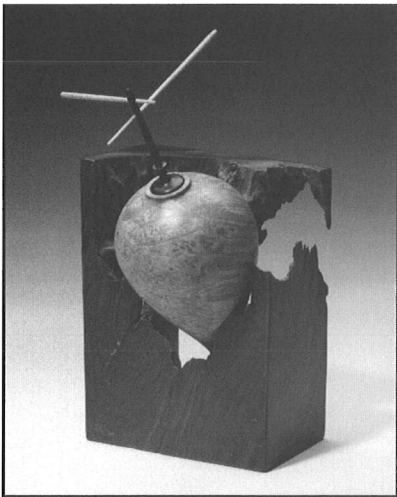


A N N U A L

Northern WOODS

AN EXHIBITION OF FINE

WOODWORKING



Southdale Center, Edina, MN - October 15 - 18, 1998

Sponsored by The Minnesota Woodworkers Guild and Hosted by Davlins and Southdale Center

This activity is made possible, in part, by funds provided by the Metropolitan Regional Arts Council (MRAC) and the Banfill-Locke Center for the Arts through a grant from The McKnight Foundation and an appropriation from the Minnesota Legislature.

Welcome To The Northern Woods Exhibition

The Northern Woods Exhibition is an annual woodworking show and competition sponsored by the Minnesota Woodworkers Guild and hosted by Davlins and the Southdale Center. The show provides an opportunity for Guild members to display and discuss their craft. More importantly, it gives the general public an opportunity to view the best in high quality woodworking design and construction. The pieces on display are more than furniture. They are works of art. Enjoy the show!

Richard J. Gotz
President, Minnesota Woodworkers Guild
& Northern Woods Exhibition Coordinator

Northern Woods Exhibition Committee Members

Thanks go to the following committee members who donated their time and effort so that this event could be a success. If you have suggestions or comments about the show or would like to help with next year's show, please contact a committee member.

Willis Bowman	Dave Looney
Richard Gotz	Peter Ribotto
Roger Knudson	James Tracy
Jerry Lilja	Don Wattenhofer

To view additional pieces of work from the past six years of the Northern Woods Exhibitions, please view the official website of the Minnesota Woodworkers Guild at <http://www.wavefront.com/~jzinsli>

SOUTHDALE

An American Original. A Minnesota Tradition.

Southdale is pleased to host the Minnesota Woodworkers Guild's Sixteenth Annual Northern Woods Exhibition. We anticipate many positive responses from our customers who appreciate the arts.

This show displays the high level of artistic talent the Minnesota Woodworkers Guild represents. The pieces in the show are made by hardworking, dedicated artisans who appreciate the traditional skills required to work with wood. There are many factors involved in the creation of the pieces on display, and each one is unique to its own creator's personality and interpretation. We hope you will appreciate this effort as you view and admire the pieces. Your most outstanding impression will undoubtedly be that of the quality of workmanship and design which you will see throughout the show.

We thank the Minnesota Woodworkers Guild for choosing Southdale as the site for this exhibition and wish its members the best of shows and much future success.

Christopher Cummins
General Manager
SOUTHDALE SHOPPING CENTER

Elizabeth Barnard

Single Arrow Custom Woodworking, 1013 Thorn Street, St. Paul, Minnesota 55106 ~ (651) 776-7821

Elizabeth maintains a custom woodworking studio in St. Paul. She can bike or walk to her shop, which satisfies in a small way her big concerns about the environment. She teaches woodworking at the Minneapolis College of Art and Design and is still remodeling her house on the East Side. She believes that art should have meaning, and that the world should have art.

Nº 101 ~ Dining Table

The objective was to make a large piece of furniture that incorporated a piece of spalted maple that was received from a friend and to find new ways to use maple and cherry together. It is hoped that the table invites touching the hewn edges around the work with fingers and exploring the texture of the stretcher with toes (or vice versa).

Hard Maple, Spalted Maple and Cherry

The finish is hand rubbed with an oil/varnish mixture

38W x 70L x 30-1/2H

N.F.S.



Willis D. Bowman

5733 Wentworth Avenue, Minneapolis, Minnesota 55419 ~ (612) 869-0140

Willis has been a serious amateur woodworker for fifteen years and serves on the Minnesota Woodworkers Guild board of directors as Vice President and also is the editor of the Guild's newsletter, Northern Woods. He is a self-employed engineer serving the medical products industry.

Nº 102 ~ Christmas Tree Stand

Several years ago while walking through the alley behind my house just after Christmas I found the retired trees that had shaded presents of a week before. It seemed a waste to have the city haul them away where they would be chipped to mulch. I made late night trips (playing the Christmas tree burglar) and hauled them back to my house. The limbs, full of tinsel (and even one ornament which I slipped back into the owner's mailbox), were cut and left on the compost heap. The trunks sat at attention in my basement for a year and when I started to spokeshave the bark, what before my eyes should appear, not eight tiny reindeers, but a marvelous white wood and a very unusual knot configuration. The knots looked like knuckles which I decided to leave as is. My problem was to carefully remove the bark around the knots with out damaging the sapwood just below the bark. Since the bark on these trees was very tenacious I tried a lot of methods to remove it without touching the sapwood. I tried soaking the trunk in water, injecting chemicals into the cambium with a hypodermic needle, freezing it, heating it, and even blasting it with a CO₂ fire extinguisher. Nothing worked! It came down to a slow process of ladling boiling water and prying and scraping it off with dental picks. Each leg took about 10 hours to strip. I won't be doing this again!

Christmas tree wood, species unknown

Finished with wipe-on varnish

14W x 20L x 37H

N.F.S.



James Gag

4724 Debra Court, Shoreview, Minnesota 55126 ~ (651) 484-1933

James is an amateur woodworker who on occasion takes on commissions which invariably require more time than was anticipated. Thank you to Jon and Pam for allowing the piece to be in the show.

Nº 105 ~ Slender Red Oak Cabinet

The slender red oak cabinet consists of two drawers and two doors. It was built as a gift for his daughter and son-in-law on the occasion of their wedding last November. When he gave it to them, he explained he had considered making them a pair of cabinets but realized that this one tall piece would be far more interesting. They could each have their own private place within it but it was most appealing when seen as a whole. Since it was tall and slender it might tip if a sticky drawer was impatiently opened in rainy weather. It's a handsome piece when new but it is intended to be used and to acquire the marks of use and to become familiar and to become, with time, even beautiful. It was crafted as an allegory for marriage.

The 135 year old neighbor's tree was close to becoming just so much firewood and yard mulch. An evening with a portable saw mill resulted in nearly five hundred board feet that was air dried under the porch. As is often said, one man's trash is another's treasure. The lumber has been used for several furniture projects.

Quartersawn Red Oak
15-1/2W x 12-3/4D x 60H
N.F.S.



Richard J. Gotz

415 Wedgewood Lane N, Plymouth, Minnesota 55441 ~ (612) 544-7278

Rich has been working with wood for over twenty-five years but has become more intent in recent years since joining the Guild in 1993. He has been a member of the Guild for five years, President for the past two years and Northern Woods Coordinator for the past two years. Rich is a software engineer for the Siemens Power Transmission & Distribution company and is currently working on the Hydro-Québec Project in Montreal. On the odd weekend when he isn't making sawdust or chopping dovetails, you'll find Rich and Kate on Minnesota's and Wisconsin's northern lakes in search of the elusive muskie.

Nº 106 ~ Thoroughly Modern Morris Chair

This chair was inspired by the Arts & Crafts Morris chair but I wanted to incorporate some spalted maple cut into lumber by my nephew in northern Wisconsin. In addition I wanted to soften some of the hard lines, which are traditional with the Morris chair, and so several edges have been rounded and the underside of the arm rests have been sculptured to increase the curvature appearance.

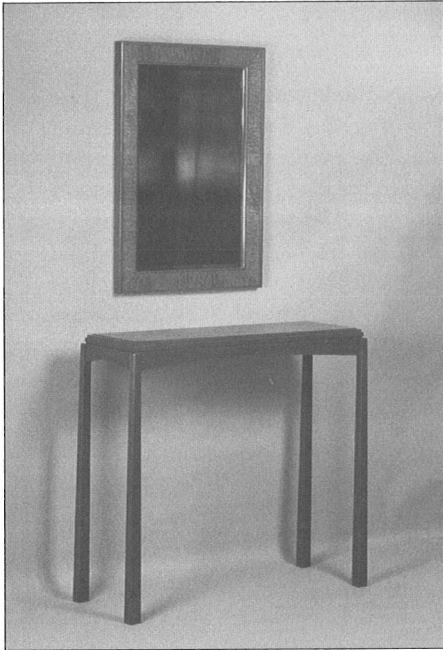
Spalted Maple (some Birdseye), Hard Maple and Ash
Finished with a wiping antique oil
Legs are ebonized with lacquer based paint
Cushions provided by Mary Kohanek (612) 788-2472
36W x 41D x 42H
\$3450



Richard Helgeson

P.O. Box 11321, Minneapolis, Minnesota 55411 ~ (612) 521-1674

Richard designs and builds custom furniture in a cooperative woodshop in downtown St. Paul. His background in carpentry and interior finish was recently supplemented by a year's study of traditional furniture making techniques at Rycotewood College in England. He is a member of Complements at 50th and Xerxes, where speculative pieces are sold and commissioned work is ordered.



Nº 109 ~ Hall Table and Mirror

Table

Mahogany and Quilted Pommel Sapele and Ebon-X
36L x 13D x 34H

Mirror

Mahogany and Quilted Pommel Sapele and Ebon-X
23W x 33H



Dr. Kay H. Ingebrigtsen

5811 West Moore Lake Drive W., Fridley, Minnesota 55432-5653 ~ (612) 571-3326

Kay is retired from dentistry and enjoys woodworking as a hobby. Whatever he makes, is presented to his wife, their children or their grandchildren.

Nº 110 ~ A Pair of Rocking Chairs

Both chairs are made entirely of red oak and finished in natural color with a polyurethane top coat. The seat frame is fashioned with mortise and tenon joinery using a J-Jointer. All other joints are mortise and tenon joints secured with wood glue. The back and seat of each chair are made of oak squares, joined together with nylon cord. The small chair required sixty pieces of wood and the large chair required eighty pieces of wood.

Red Oak
Finished with polyurethane
25W x 30D x 34H and 16W x 20D x 23H
N.F.S.



Tim Johnson

Complements, 3020 West 50th Street, Minneapolis, Minnesota 55410 ~ (612) 922-1702

The Fourth Street Guild ~ (612) 378-2605

Tim has been building furniture in traditional (and un-traditional) styles since 1986. He established the *Fourth Street Guild*, a cooperative woodworking shop, and *Complements*, a cooperative store that showcases the talents of local woodworkers.

Nº 113 ~ The Incredible Shrinking Dining Table

"I have a project that you don't want", the lady said. "I live in a Craftsman style house and I want a big dining table that will somehow shrink so that I can use it as a sofa table when I don't need it for dining. I don't like the look of drop leaf tables and I don't want the hassle of an expansion table with leaves." We settled on the look of an Arts & Crafts style hall table. I was thinking of a hinge on the top that folded upon itself, as in 18th century card tables, with a fixed base and swing legs, when I saw Sid Nystrom's folding/sliding table top at last year's Northern Woods show. Here was a top that centered itself over its base in both closed and open positions. Thanks Sid! My last two table commissions had trestle style bases, so the accordion like expansion capability came quickly and seems a natural way to provide adequate stability for the opened top. Bringing the idea to fruition was an arduous task. The engineering required clear thinking, as every decision about the table in the closed position affects the table in the open position and vice versa. The challenge was to end up with two good-looking tables in one.

Quartersawn White Oak. Finished with raw umber glaze and hand brushed polyurethane
23W x 81L x 30-1/2H, \$4500 (Orders only, this piece N.F.S.)



Bruce Kieffer

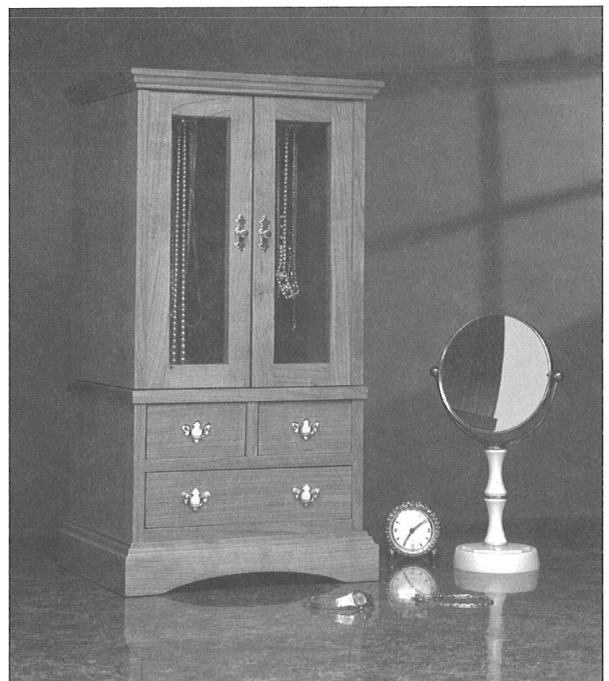
1406 Grand Avenue, Suite 3, St. Paul, Minnesota 55105-22213 ~ (651) 642-9615

Bruce is one of the founding members of the Minnesota Woodworkers Guild, and one of its past Presidents. The main focus of his business these days is writing "how-to" woodworking articles for magazines and books, and producing exploded view technical illustrations. He builds an occasional piece of custom furniture when time permits and the project grabs his interest. Bruce is proud to say that he has been in the woodworking business for the past twenty years. He also consults other small to medium size woodworking businesses regarding accounting, financing, computers and good business practices.

Nº 114 ~ JEWELRY/MUSICAL BOX

This piece was built as a "how-to" project for Rockler Companies, Inc., plans are available for purchase. The initial design was conceived by Dan Jacobson. I refined his ideas to create the final design. A unique feature of this cabinet is that the doors are hinged to the back. This allows the upper section to be opened fully to get at jewelry hung on the chain carousels. Opening the lower drawer activates the musical movement. This was a fun and challenging piece to build. The smaller a piece is, the harder it is to build since any minor error will throw off the entire piece.

Cherry
Finished with natural Danish oil
8-1/2D x 11W x 20-3/4H
N.F.S.

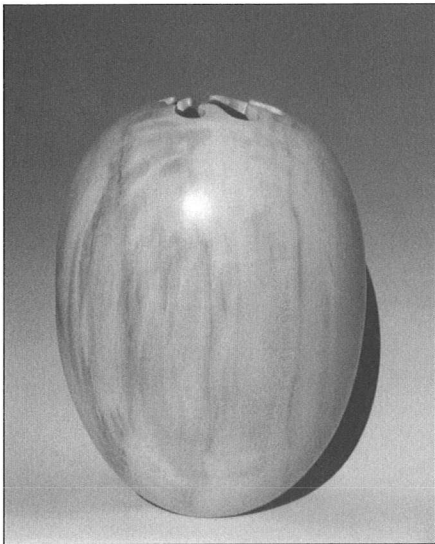


Alan Lacer

667 Harriet Avenue, Shoreview, Minnesota 55126 ~ (612) 483-6428

Alan has been interested in woodturning since the mid-1970's. His initial interest in working wood started while he was studying philosophy in graduate school at the University of Oklahoma--he was drawn to do something with his hands as well as his head. Much to his surprise, working wood-- especially with a lathe--involve as much mental energy as anything he was exposed to in his studies of philosophy. He feels absolutely convinced that his background in philosophy has considerably aided his development as a craftsman. Although he has made many functional pieces, from porch columns to crochet hooks to chair parts, the bulk of his work is composed of pieces that are primarily decorative. This includes wooden bowls, plates, goblets, and lidded boxes--all of which may have some functional aspect but are created to enjoy the visual and tactile properties of the wood and form. Even though he sometimes uses exotic woods in his work, the largest percentage of his materials come from native woods to Oklahoma, and now, as a new resident of Minnesota, of our local woods. This includes such species as Osage orange, walnut, buckeye, soft maple, persimmon, pecan, sycamore, and box elder. He has recently been exploring the local Minnesota woods of birch and northern maples.

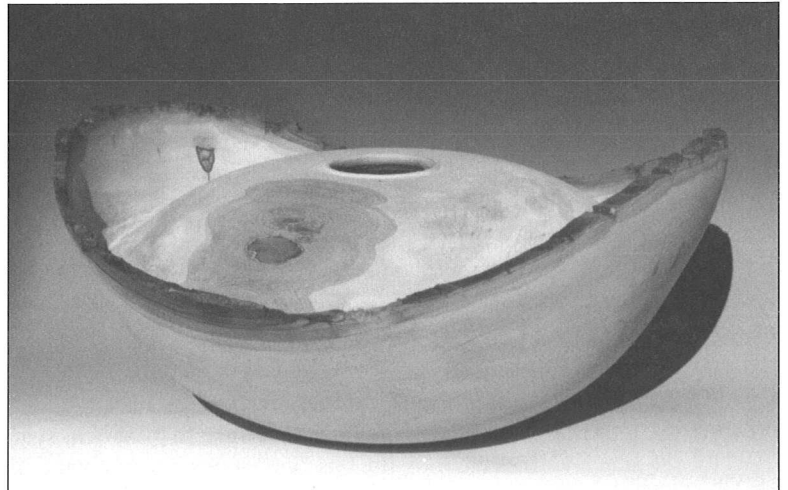
Alan is also heavily involved in the teaching and promotion of woodturning. He has taught or conducted demonstrations in about 26 states and four foreign countries (Ireland, Belgium, Switzerland and Japan) at craft schools, colleges, high schools, businesses, and vocational technical institutions. He has written articles on a number of topics that have appeared in publications in the United States, Switzerland, Belgium, England, and New Zealand. Also, from January 1991 until January 1995 he served as the national president of the American Association of Woodturners. He was recently named as a contributing editor to the *American Woodturner*.



Nº 118 ~ Box Elder Egg Form

The egg form is one of the most pleasing of all natural forms with infinite variety. Also the "eggshell finish" is something I have tried to duplicate on this piece.

Box Elder
Finished with shellac
7D x 12H
\$475



Nº 119 ~ Natural Top Hollow Form

Basswood
16D x 7H
\$425

Nº 120 ~ Redwood Burl Low Form

Redwood Burl
Finished with varnish/oil blend, 18D x 4H, \$525



Burt Levy

Studio L, 3204 South Fremont Avenue, Minneapolis, MN 55408 ~ (612) 823-4533 (h) or 824-4887 (w)

Burt is a self-taught woodworker who spent 14 years in the business and who now mixes that with professional photography. His first shop, Treeborn Creations, started in his garage in 1972 and later moved to a 700 sq. ft. storefront in South Minneapolis. During this time his work ranged from antique reproduction to original contemporary furniture and kitchen casework. He also did some turning, carving, and refinishing/restoration work.

Around 1976 he merged with another shop, Woodsmith, which was the name they continued to operate with. They built the business to a 7,000 sq. ft. facility with a maximum of eight employees. Their work ranged from short run production of wooden accessories and furniture to custom contract and residential furniture to casework and millwork. As they grew, Burt moved from the bench to the office and was responsible for design, shop drawings, and production coordination. They closed this shop in 1982.

For the next 4 years he worked as a consultant to various shops and as shop manager for Wood Tailor, Inc. During that time he learned photography and has been a commercial photographer specializing in architectural, interior, and studio product photography until the present. His current woodworking project is cabinets for his new kitchen and bathroom.

His most satisfying time has been spent either at the bench producing fine woodworking or behind the camera producing both commercial and fine art photography. He is glad to say that he is currently doing both and hope to be able to continue to do so for quite some time.



Nº 123 ~ Magazine rack and cabinet

This piece represents my “re-entry” into fine woodworking after having been away from the bench for about 16 years. It was designed to meet the storage needs, space, and aesthetic considerations for a remodeled 1910 era bathroom with a claw-foot tub, pedestal sink, and medium brown stained oak tongue and bead wainscoting. To challenge myself and my recently set-up shop I decided to work in solid wood and use raised panels (formed by hand). The joinery is mortise and tenon (doors, end panels, intermediate rails), dovetail tenon (top rails), and sliding dovetail (bottom). The proper depth and angle for the magazine shelf was particularly important to fit a wide variety of magazines. It was also a challenge to cleanly detail and accommodate the inevitable shrinkage and expansion of this solid wood shelf. Another challenge that I hadn't counted on was the seemingly random grain that Willow has. Much frustration and a steep (re)learning curve were the products of this decision

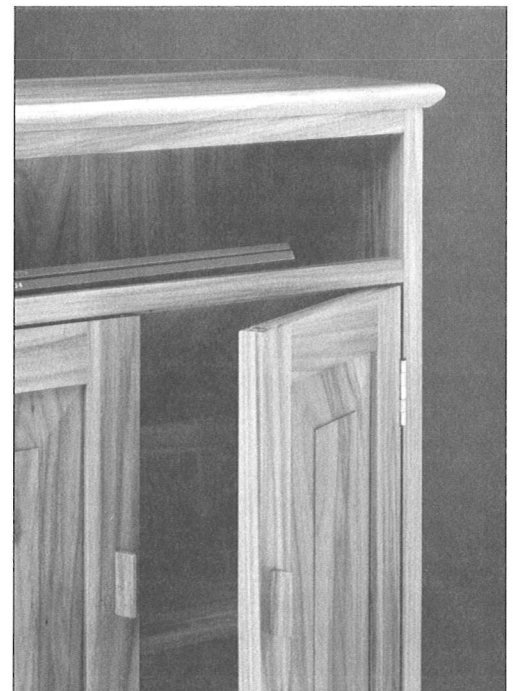
There were many stages during which this piece almost “got away from me,” i.e. the point where you start saying “good enough” when it really isn't. Somehow I managed to rein myself in and produce a piece that fine-tuned my shop, my tools, and my mind. It is also one that I am proud enough to display in the Northern Woods Exhibition and, in effect, hang my shingle out as a woodworker reopening for business.

Willow

Complemented with a natural finish

9D x 21L x 25-1/4H

\$ 1,500 (Orders only, this piece N.F.S.)



Dave Munkittrick

Custom Furniture & Repair, 1108 Town Hall Drive, River Falls, Wisconsin 54022 ~ (715) 426-5134

In 1983, Dave joined what is now known as the *Fourth Street Guild*. He traces much of his development as a woodworker to those years in the Guild. He left the *Fourth Street Guild* in 1987 in pursuit of country living. His shop is now in an old pig barn on the farm his wife and he bought in River Falls, Wisconsin. In 1995, he returned to his roots, so to speak, when Tim Johnson invited him to consider joining *Complements*. Since then, he has embarked on another journey of professional development. He has learned a great deal from the members at *Complements* and looks forward to many rewarding years to come as the store grows and matures.



Nº 126 ~ Maple Trestle Table

The objective was wanted to design a trestle table that looked strong without being heavy and overbearing. The half lap joint on the lower stretcher and the slight taper of the verticals help keep the lines clean and light.

Maple
Finished with urethane oil
42W x 84L x 30H
\$3200

Nº 127 ~ Soft Maple and Walnut Display Shelves

These shelves feature figured soft maple on walnut standards. In following its function as a display shelf, the design emphasizes open display areas, with a pleasing, somewhat Oriental feel to the geometry.

Figured soft maple and walnut
Finished with urethane oil
36W x 8D x 25H
\$325



Michael J. McGlynn

501 1st Ave N.E., Minneapolis, MN 55413 ~ (612) 929-7169 (h) or (612) 331-1739

Michael Mc Glynn owns and operates "Michael J. Mc Glynn Handcrafted Custom Furniture". He specializes in early 20th century architecturally designed furniture.

Nº 128 ~ Josef Hoffman Chair

Ash, leather seat, stained black
Finished with catalyzed lacquer finish
22-1/2W x 18D x 52-1/2H
\$1200

Doug Nimmo

1605 Riverview Road, Saint Peter, Minnesota 56082 ~ (507) 931-1389

Douglas is an associate professor of music at Gustavus Adolphus College, Saint Peter, Minnesota, where, since 1987, he has conducted the Gustavus Adolphus Bands; he also taught conducting, instrumental methods, as well as supervised student teachers. Under his leadership, the Gustavus Band has toured throughout the Midwest and Southwest United States, Sweden, Denmark, Norway, Germany, Austria, the Czech and Slovak Republics, Poland and Hungary, and has completed residencies with composers David Holsinger, Csaba Diak, Thomas Root and Swedish trombone virtuoso Christian Lindberg. In April of 1995, the Gustavus Band and the Gustavus Choir and Christ Chapel Choir premiered David Holsinger's magnum opus, The Easter Symphony. Dr. Nimmo is active as a guest conductor and clinician, and as a writer, has had a number of professional journal articles published. He holds degrees from the University of Minnesota--Duluth, Vandercook College of Music and Arizona State University.

Working with wood is an endeavor which Doug has enjoyed at various levels since childhood. More recently, he has become interested in various furniture forms, particularly chairs and tables. A possible title for the two tables displayed at this year's Northern Lights Exhibition might be 'Sisters.' While holding some similarities, the tables are clearly different. The foyer table was the first of the two to be built, inspired by the curved back legs of a set of dining room chairs he had completed for his home several years ago. He also wanted to depart from the more traditional mortise and tenon approach to the apron/leg joint, opting instead to 'wrap' the legs with a coved apron. He then built the end table, continuing the employment of padauk and coved apron, albeit now with the apron and legs in a mortise/tenon relationship. Instead of curved legs, he opted to taper them and then to 'soften' the top by adding a coved surface to the 'frame.' His intent was to demonstrate that the tables are clearly related yet independent . . . 'sisters.'



Nº 131 ~ Table

Padauk
16W x 28D x 33H
Price: Inquire



Nº 132 ~ End Table

Padauk
16W x 16D x 23H
Price: Inquire

Geoffrey Page

Heirloom Custom Woodworks (612) 379-4847

1355 Rice Creek Trail, Shoreview, Minnesota 55126 ~ (612)783-7009

Geoff moved from Guilford Connecticut to Minneapolis last October. He recently started his own business named *Heirloom Custom Woodworks*, after working for a furniture shop in Fridley, MN. His only formal training in woodworking consists of completing an internship at the *Rockport Apprentice Shop*, a traditional wooden boat building center on the Maine coast.



Nº 136 ~ Pair of Sofa End Tables

The dimensions of this piece were dictated by the client's sofa and size of the room. Drawers are quartersawn white oak with mahogany fronts.

Honduran Mahogany and Quartersawn White Oak

Top inlaid with Carnelian Granite

Finished with tung oil and varnish mixture

15W x 24D x 23H

Price: \$675 per table



John Pavey

8675 Inman Avenue South, Cottage Grove, Minnesota 55016 ~ (651) 459-9889

John started his woodworking career over sixteen years ago, working for a company in England, making antique reproductions. He worked for a cabinet company in St. Paul until 1993, when he started his own business. Since then, he has produced a wide range of custom made furniture and cabinets, including a cherry country French drop leaf dining table, an armoire, a handkerchief table, a cherry kneehole desk, a cheval mirror, mantelpieces, and a games table to name a few. John is a member of the British Guild of Master Craftsmen.

Nº 137 ~ Comb-back Windsor Chair

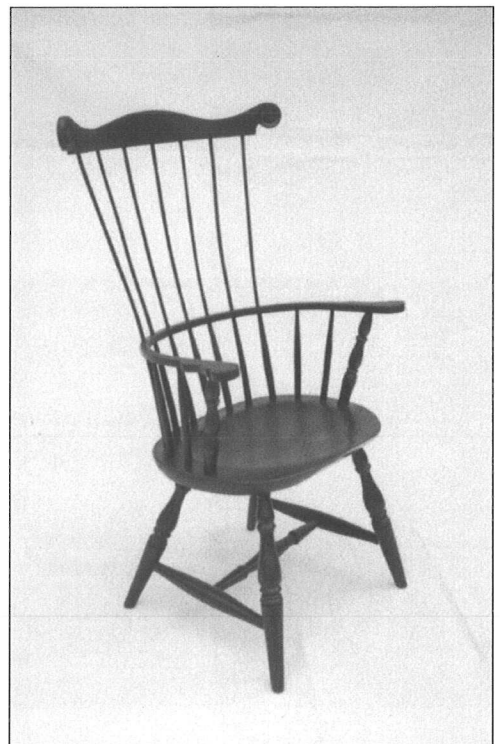
This style of Windsor chair was first made in Philadelphia around 1740 and started the Windsor chair revolution. Apart from turning the legs, stretchers and arm stumps, the rest of the chair is shaped entirely by hand. The seat was carved out using an adze and inshave finished with a travisher and scraper. The arm rail, crest rail, and spindles are split from the green log and shaped using a draw knife and spoke shave. The crest rail and arm rail are then steam bent.

Oak, Ash, Cherry, and Basswood

Finished with black milk paint and linseed oil

21-1/4W x 16D x 17H (43H overall)

\$550



Tony Pfaff

1951 Highland Parkway, St. Paul, Minnesota 55116 ~ (651) 699-0685

Tony is currently a student at the University of Minnesota Medical School and has been woodworking for about five years.

Nº 141 ~ Serving Tray

Although seldom used with dovetails, ash seemed like a logical choice for a tray given its combination of strength and relative light weight.

Ash, finished with tung oil. 13W x 19L x 2-1/2H Price: \$70



Mark Powell

M. Powell Furniture Co., 1620 60th Ave, Amery, Wisconsin 54001 ~ (715) 268-8579

Mark has been a woodworking hobbyist for the past ten years and has recently turned professional. Mark primarily produces Shaker style furniture and also custom designs. Mark recently attended a three month class at *The Center for Furniture Craftsmanship* in Maine with Peter Korn, focusing on design and the use of hand tools.

Nº 142 ~ Shaker Candle Stand

Cherry, finished with an oil/varnish
16D x 24H
\$650

Nº 143 ~ Coffee Table

Cherry, finished with an oil/varnish
40L x 20D x 18H
\$875 without drawers, \$1125 with drawers

Nº 144 ~ Corner Cabinet

Cherry, finished with an oil/varnish
27W x 13D x 84H
\$2100



R.C.H. Schmidt

16001 Tonkawood Ct., Minnetonka, Minnesota 55345 ~ (612) 935-0272

Mr. Schmidt is retired from military service after twenty-nine years, ergonomic engineering at FMC after seven years, and maple syrup production at the Minnesota Landscape Arboretum during two seasons.



Nº 147 ~ Woodbubbles

"Woodbubbles" is a 181 acrylic globe mounted on a solid walnut base containing approximately 40 wooden figures in the geometric configuration of a rhombic triacontahedron. The figure construction is the result of an evolutionary process, beginning with the construction of small gift boxes of "smiles" (the bottom of the box was a mirror) and progressing through the construction of "Stars" in an M. C. Escher woodcut and the five Platonic solids. A visitor handling the dodecahedron commented that the angles were "too sharp" to be aesthetically pleasing. A pencil and-paper construction of planes on each edge of the dodecahedron produced the rhombic triacontahedron. A similar construction on an icosahedron surprisingly produced the same result (1), tempered by the discovery that Archimedes had discovered the rhombic triacontahedron 2400 years ago,

The geometric properties of the rhombic triacontahedron are intriguing in that it contains sets of index points and planes which establish all five of the Platonic Solids. Furthermore the ratio of major to minor axes of each face is exactly equal to the Golden Mean ((square root of

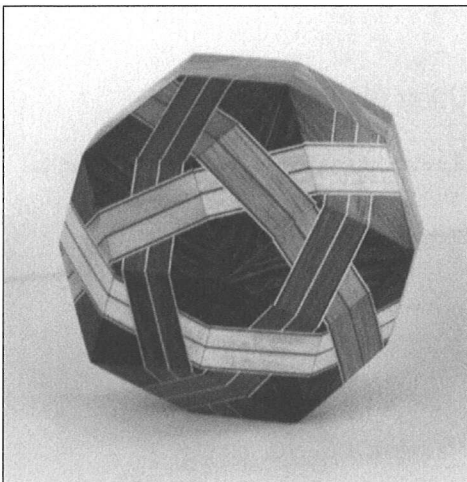
$5 + 1)/2$ incorporated by the Greeks into much of their classical architecture as the most aesthetically pleasing proportion of a rectangle's sides. The ratio is also the asymptote approached by the ratio of successive integers in the Fibonacci Series, often found in natural growth patterns such as sunflower seed heads.

A wide variety of woods in their natural colors

Finished with sprayed lacquer

18Dia

N.F.S.



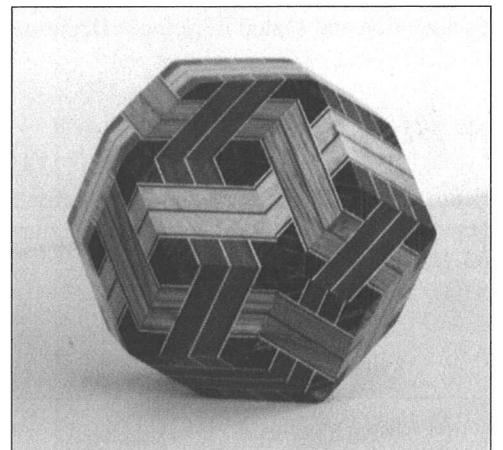
Nº 148 ~ Variants I and II

Wenge, Purple Heart, Blood Wood, Satinwood, Sumac, Basswood, and Buckthorn

4-1/4Dia

Finished with spray lacquer

N.F.S.



Bill Siggelkow

5815 Sumac Lane, Rochester, Minnesota 55906 ~ (507) 282-3970

Bill has been building furniture and enjoying woodworking for thirty-five years, mostly for his own family. When he retired from IBM, he started to sell his work. He is represented in six art galleries and Davlins stores. His retail work includes mostly candleholders. This piece is a continuation of the series of coopered cabinets started three years ago. He started coopering doors when he attended a workshop in Maine at the *Center for Furniture Craftmanship*. The first piece, a CD Cabinet, was entered in the 1996 Northern Woods Show. He has since built four more coopered CD cabinets (all slightly different). Bill's furniture is produced on by commission.

Nº 152 ~ Coopered Cabinet on Stand

This piece provided several major challenges. First, the grain of curly maple prevented using hand planes to cooper the doors, which is the normal method. The tear-out was horrible. A grinder/sander combination was used to shape the doors. Second, not until after the first coat of finish was applied did very noticeable "sticker stain" appear across the entire cabinet. Two distinct stripes across the doors and the sides. The piece was stripped and bleached to remove the stains. The sides and inner top/bottom are dovetailed together. The stand is based on several of Jim Krenov's designs. Note the "twist" in the legs.

Curly Maple, Cherry, Madrone Veneer, Birdseye Maple Veneer and Ebony. Finished with polyurethane
9D x 14W x 59H, \$2500



Jon Stumbras

3751 Pillsbury Ave. S., Minneapolis, Minnesota 55409 ~ (612) 827-1553

Jon has been making furniture for the past thirteen years. He has been making commissioned pieces for the last eight years, and went to full time furniture making approximately two years ago. He has made all the standard pieces over the years, but has concentrated mostly on chairs the last five years, making everything from 18th century Windsor chairs, to country French leather upholstered chairs. He has been drawn to Windsor style chairs due to their timeless design as well as their comfort. Jon is part of a collection of furniture makers in the twin cities that have created a retail showroom for our work in the Minneapolis area. He would be happy to talk with anyone about their efforts at the store.

Nº 153 ~ Cherry Boat Side Table

This was a dining room table that was designed with a couple who wanted a cherry table that matched a set of ash chairs they owned. Several different conceptions were discussed, the table in the show is the result. A decision was made to include an ash strip underneath the top of the table to add a subtle link to their chairs. They have always appreciated the beauty of cherry, and we agreed that too much ash could detract from the overall beauty of the wood and the graceful curves of the sides.

Cherry with Ash accent, Finished with a polymerized linseed oil
66L x 42W x 30H

This table is not for sale, a similar table commissioned would cost approximately \$2800

Nº 154 ~ Cherry and Ash Side Chairs.

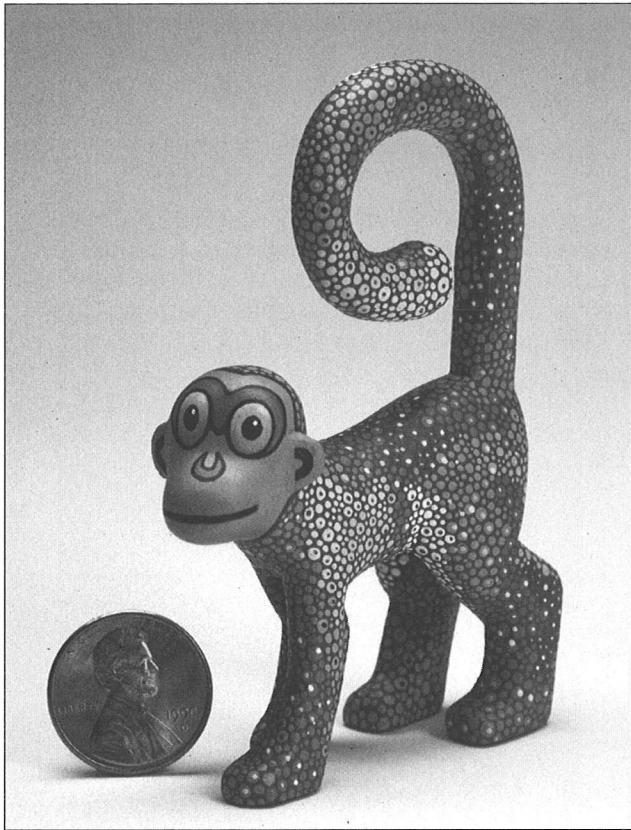
These chairs were not built for the Boat table, but for another customer who wanted these chairs to fit around a curved breakfast counter. They already own a number of Thos. Moser pieces and requested this design. These chairs are a nice complement to the Boat Table.

Cherry and Ash, Finished with an oil/varnish mixture, 17W x 17D x 39H
These chairs are not for sale, but can be ordered for \$595 each

Steve Tomashek

6720 Rosemary Lane, Edina, Minnesota 55639 ~ (612) 944-8033

Steve was born in Winona, Minnesota. His earliest memories involve working on his family's hobby farm, fishing on the lake outside their house, and working in the basement woodshop. He received his social studies education degree from Indiana University in 1994 and spent the next two years teaching math and science at the "Risen Christ School", before he decided to become a full-time whittler.



Nº 157 ~ Miniature Monkey Wood Carving

Steve takes his inspiration for his figures from sources as diverse as hieroglyphics, bible stories, technology and dreams. His pieces are really miniatures with a mission: to catch us off guard, to amuse us, and to prompt us to re-connect with our co-habitors of the planet, the animals.

Basswood

Finished with acrylic paint

(Small)W x (Little)L x (Short)H (handleable)

Price: varies

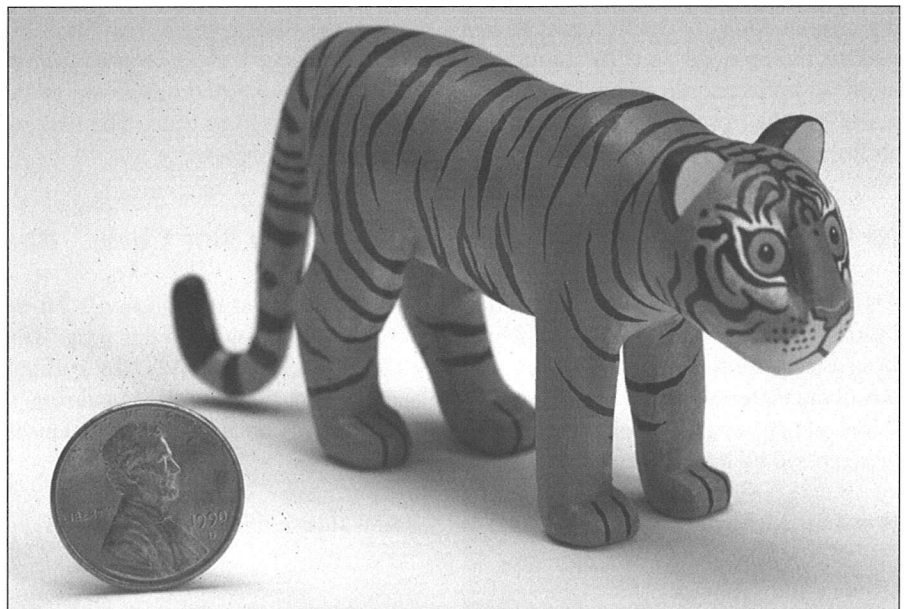
Nº 158 ~ Miniature Tiger Wood Carving

Basswood

Finished with acrylic paint

(Small)W x (Little)L x (Short)H
(handleable)

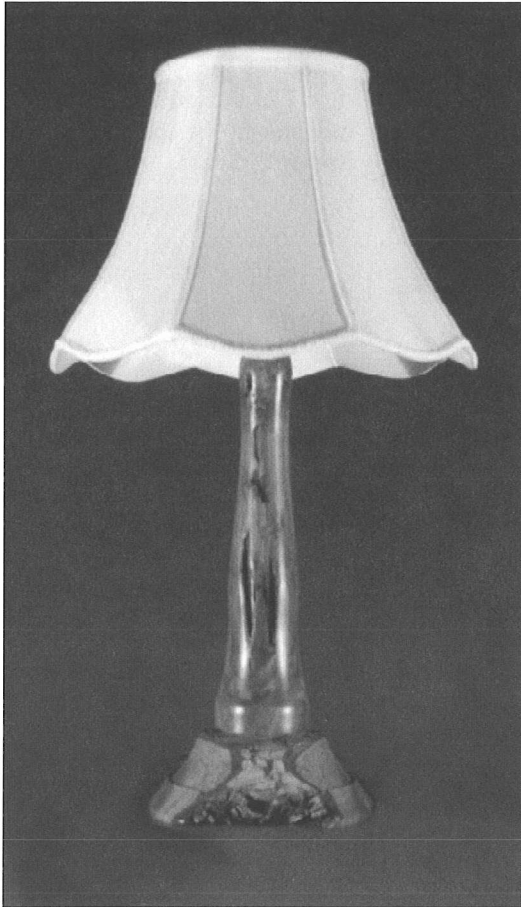
Price: varies



Don Wattenhofer

5312 Horizon Drive, Fridley, Minnesota 56421 ~ (612) 572-1045 (h) or (612) 781-5387 (w)

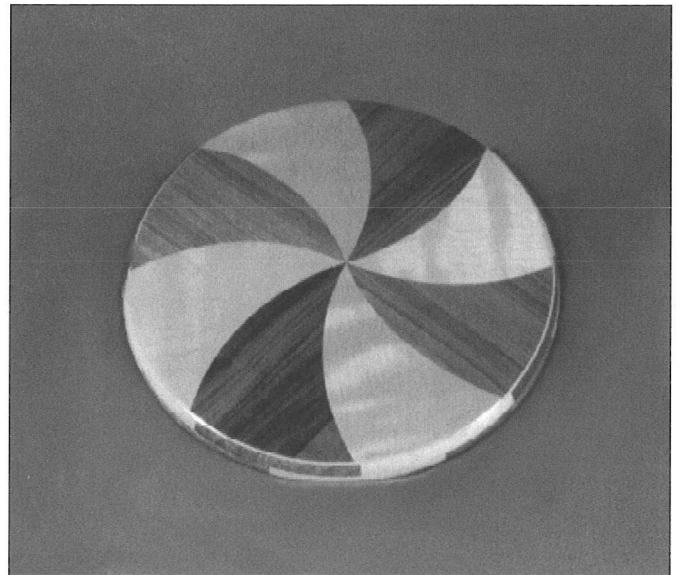
Don began woodworking as a child and bought his first stationary power tool (a 14" bandsaw) with paper route money. The hobby has become a very satisfying way to express his creative instincts. Some of his major projects include a sixteen foot plywood and fiber glass SK runabout, a full set of kitchen cabinets with raised panel doors, a wooden staircase with thirty turned balusters, a round oak table with carved lion's head legs, a full set of wooden chairs for the table and a multitude of turned items. The woodworking has been mostly a hobby for Don; however, he has occasionally made custom pieces and sells turnings on consignment at Davlins gift store.



Nº 161 ~ Lamp

The piece is turned from a plum tree that grew in the back yard of my childhood home. The base has the grain running crosswise and includes the natural bark on the front and rear. The vertical column includes some of nature's worm holes. The lamp was designed at the urging of my wife and will be used in our home.

Plum
Finished with lacquer and air brush
8W x 18H
N.F.S.



Nº 162 ~ Frisbee

The veneered portion is three layers and was glued up and pressed in specially turned convex and concave disks of chip board. The rim was formed from eight sections of walnut and maple glued up to form an octagon and then ripped and re-glued with the seams staggered.

Walnut, Maple, Black Walnut Veneer, Birch Veneer. Finished on the lathe with wipe on lacquer & paste wax
16D x 3/4H, \$150



Greg Wood

The Wood Company ~ (320) 543-2944

6443 Mere Drive, Eden Prairie, Minnesota 56346 ~ (612) 937-2193

Greg has been building furniture professionally for over five years now and has come to realize with each new custom piece that reaching any kind of plateau is virtually impossible in this woodworking field. Perhaps this is why he often feels he is struggling while at the same time he is very challenged and rewarded. This continuous climb has gotten into his blood and makes him feel young and excited about the future as he transitions into the second half of his life. Greg's furniture can be seen at *Complements* store in Minneapolis.



Nº 166 ~ Backgammon Table

This table was commissioned by Jerry Powers for his lake cabin. Jerry's only requirements were that the playing surface would accommodate the playing discs from his gammon set but he gave me free rein on how the table should look. The table has a drawer for storing playing pieces and contains the artist's trademark lattice design. The design allows two players to sit close to the playing surface. The adjacent sides have drawer and lattice work for table stability.

Cherry, Maple, and Walnut
Finished with polyurethane/oil
29W x 24-5/8L x 29-5/8H
N.F.S.

Nº 167 ~ Out-door Round Table

Asked to build from a small glimpse of a photo showing one portion of this table top was how this design evolved. Not having a total picture allowed the artist to "fill in" the missing pieces of his idea of an outdoor round table. It was this artisan's task to engineer how the center and the base of the table came together. The center needed to be simple so as not to distract from the slated geometry, but strong enough to support the apex of the table. The center consists of three members intersecting at sixty degree angles, which allows six pie pieces in the round table. The members are notched so that one of the members is sandwiched between the other two; this joinery creates the hub. The base mirrors the top three members as feet, and has six legs corresponding to the six pie pieces where they support the table. The shape of the legs would have the same curve as the circumference of the top. The entire table does not have one right angle, which made execution of this table very humbling, but most rewarding. The table is on display courtesy of Patrick and Debbie Carney.

Mahogany
64Dia x 29H
N.F.S.



Sponsors of the Most Technically Accomplished award

G.C. PETERSON MACHINERY CO., INC.



3815 East Lake Street • Minneapolis, MN 55406

PHONE 612-721-6661

1-800-678-6062

FAX 612-721-6572

NEW
MACHINERY
PORTABLE TOOLS
SUPPLIES
TOOLING
*for working with
wood & plastic*
Leasing Program



USED
MACHINERY
APPRAISALS
LIQUIDATIONS
CONSIGNMENTS
Parts & Service

POWERMATIC

DELTA
A Pentair Company

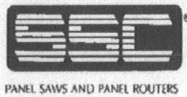
Timesavers
THE FINEST FINISH IN THE WORLD.

These
Machines,
Portable Tools
& Supplies,
As well as
many other
manufacturer's
items can be
seen on our
show floor

PORTER+CABLE
PROFESSIONAL POWER TOOLS

Mini Max
scmi

Lemmon & Snoop Co.



PANEL SAWS AND PANEL ROUTERS

*onsrud
cutter inc.*

"Jorgensen"

PRIMARK
TOOL GROUP™
MAGNA PROFESSIONAL TOOLS • DML
MAGNA • FOREST CITY • HAWERA

C.R. ONSRUD

RITTER
MANUFACTURING, INC.

BOSCH

Northfield

Whirlwind

DYNABRADE

3M

WKW

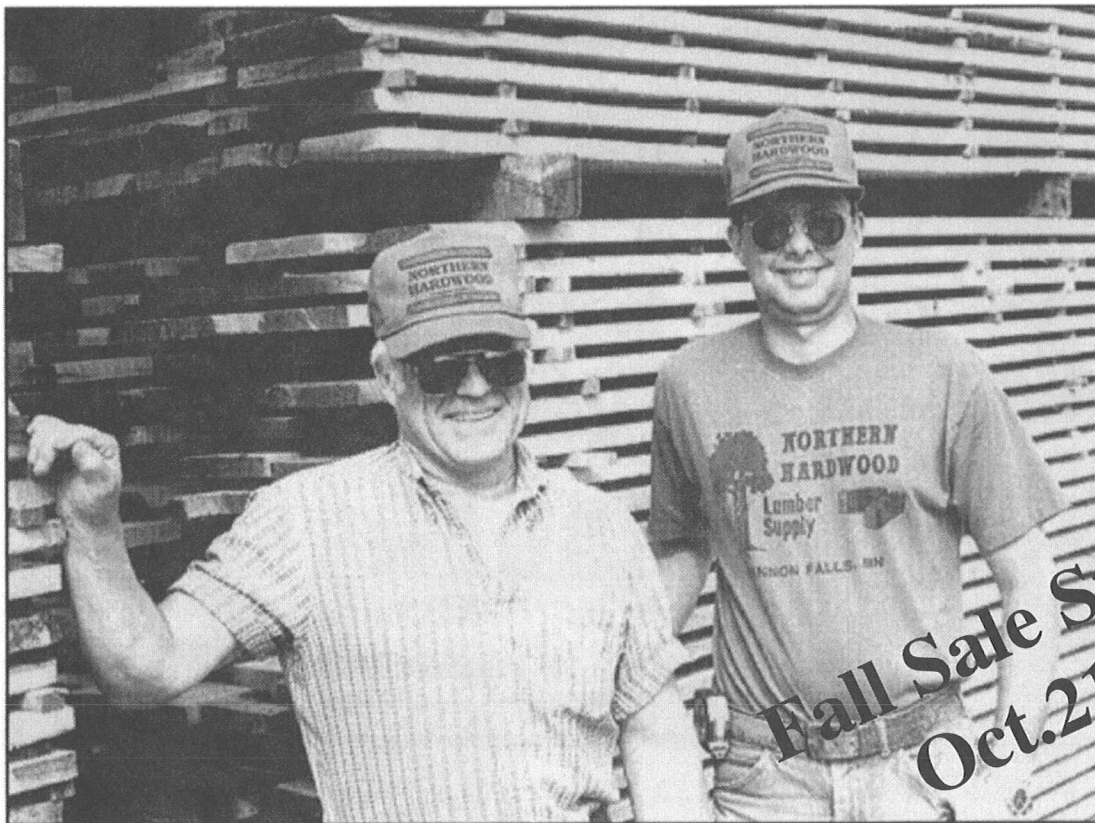
Wadkin

- COVERING THE UPPER MIDWEST WITH YOUR MACHINERY NEEDS -

NORTHERN HARDWOOD, INC.

Located just East of Cannon Falls off Hwy. 19 on Hardwood Way (watch for the signs).
Open Monday - Friday, 7:30 a.m. to 4:00 p.m.; Saturday, 8-Noon

507-263-5088



Our premium quality hardwood lumber is kiln dried and ready to use for those special woodworking projects.

- Edge-glued panels available.
- Carving stock.
- Featuring most native hardwood species.

All Customers Welcome!



Sponsors of the Best Finish award

SEVEN CORNERS HARDWARE, INC.

216 West 7th Street
Saint Paul, Minnesota 55102
(612) 224-4859 or 1-800-328-0457

Come to Minnesota's Largest and Most Complete Source for Woodworking Products !

Over 900 Cordless and Electric Power Tools on Display !

3M

BESSEY

BOSCH

▲ DELTA

DEWALT

FORREST

freud[®]

JET
EQUIPMENT & TOOLS

WERNER[®]

HITACHI[®]
POWER TOOLS
Makita

Milwaukee[®]

Panasonic

PORTER
★ **CABLE**

RYOBI[®]

Call for a FREE catalog or visit
our website at www.7cornershdwe.com



Complements is a Minneapolis showcase for custom furniture. Located at 50th and Xerxes in Southwest Minneapolis you will find furniture ranging in style from an 18th century Chippendale secretary desk to contemporary designs that are original and timeless.

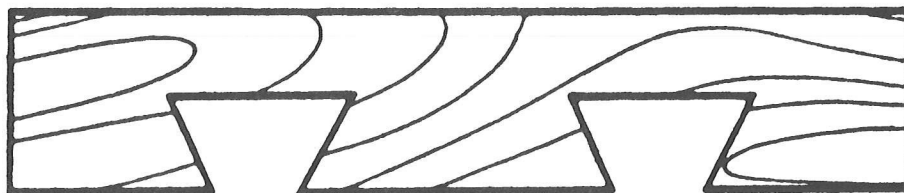


Come and see the one of kind furniture that is on display, or let us work with you to design and build the piece you need for your home or office!

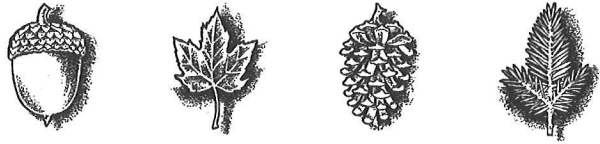
The furniture makers at **Complements**, Tim Johnson, Jon Stumbras, Greg Wood, Dave Munkintrick, Richard Helgeson, Ross Peterson, Patrick Baillargeon, and Ed Krause are proud to be part of the *1998 Northern Woods Exhibition*. We would welcome a chance to talk with you at the show as we have a number of individual pieces entered in this fine exhibit.

Watch for the announcement of our name change in the next two months. Our location will be the same, but our name is changing to *Xylos, A Gallery of Fine Woodwork*.

COMPLEMENTS



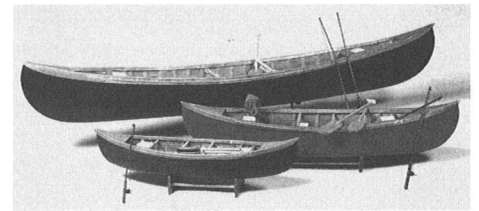
3020 W. 50th Street Minneapolis, MN 55410 612.922.1702



DAVLINS

Fine Crafted Gifts of Wood

Davlin's is proud to sponsor the sixteenth annual Northern Woods Exhibition. Our eight years of involvement with the Minnesota Woodworkers Guild has given us the chance to appreciate the work of some of our state's finest craftspeople. Stop by our store on Southdale's second level by Dayton's to see our own selection of fine crafted gift items.



Rosedale

651-631-2162

Southdale

612-926-6838

Burnsville

612-892-3665



Davlin's new store, **The Woods**, in **Maple Grove** features all your favorites from Davlin's, plus: log furniture, garden accessories, pottery, and more. It's just one exit north of Weaver Lake Road on I-94...visit us soon! (Call 416-WOOD for more information.)



The Woods

MADE BY HAND AND NATURE