

Twenty-Forth Annual



# Northern Woods

An Exhibition of Fine Woodworking



Southdale Center  
Edina, Minnesota  
April 26 thru 29, 2007  
Minnesota Woodworkers Guild

Sponsored By The Minnesota Woodworkers Guild  
[www.mnwwg.com](http://www.mnwwg.com)

## Table of Contents Northern Woods 2007

Welcome to the Northern Woods Exhibition .....	3
Southdale.....	3
Northern Woods Exhibition Rules for Entry .....	4
Judging.....	5
Judges' Biographies .....	6
Award Categories .....	7

### Exhibitors

KENNETH ANDERSON .....	12
MILT BLUMENFELD .....	14
DENNIS CHILCOTE .....	15
MARK DALSIN .....	16
GREG DEAKINS .....	17
JAMES DONAGHY .....	19
TRACY DONOVAN.....	20
JOEL FICKE.....	21
KARL FOORD.....	22
AL FRANK.....	24
JIM FRANKARD.....	25
JACK FROST.....	26
BART GENOVESE ~ BMG FINE FURNITURE.....	27
TIM GORMAN .....	29
TIM HEIL.....	30
RICHARD HELGESON .....	31
JASON HOLTZ ~ J. HOLTZ FURNITURE.....	32
JIM JACOBS.....	34
CRAIG JENTZ.....	35
WALLACE JACOBSON ~ JACOBSON WOODWORKING.....	35
JUSTIN KINDELSPIRE .....	36
DAVID KLOCKE.....	37
ROGER KNUDSON.....	39
TONY KUBALAK .....	40

DAVID LANE.....	41
DAVID LANG.....	42
MARK LAUB ~ THE BOARD ROOM.....	43
BERT LEVY ~ STUDIO L FURNISHINGS.....	45
JASON MATH.....	46
SCOTT MCGLASSON ~ WOODSPORT.....	47
LAURIE MCKICHAN.....	48
THOMAS S. MENKE.....	49
GERALD PEASE.....	50
FRAN PETERSON ~ HOMECRAFTERS CONSTRUCTION CO. ....	51
MIKE PFEIFER.....	53
CHUCK PITSCHKA.....	54
AL POKORNY.....	56
THOMAS PRONDZINSKI ~ TOM'S WOODCRAFT.....	58
CECILIA SCHILLER.....	59
DICK SCHULTZ.....	60
PETER SCHULZETENBERG ~ JPS WOODWORKING.....	61
TOM SCHRUNK.....	63
THEODORE SMETAK.....	64
RUTAGER WEST.....	65
KATIE WITTENBERG ~ KDK DESIGN.....	65
STEVE TOMASHEK.....	66
JOHN WEBSTER.....	67
CHURK WHITCOMB ~ GRASSROOTS.....	69

## **WELCOME TO THE NORTHERN WOODS EXHIBITION WELCOME TO THE NORTHERN WOODS EXHIBITION**

The Northern Woods Exhibition is an annual woodworking show and competition sponsored by the Minnesota Woodworkers Guild and hosted by the Southdale Center. The show provides an opportunity for Guild members to display and discuss their craft. More importantly, it gives the general public an opportunity to view the best in high quality woodworking design and construction. The pieces on display are more than furniture. They are works of art.

Education is one of the goals of the Minnesota Woodworkers Guild. Some of the pieces in this show are, in part, the result of skills learned at monthly meetings, workshops and seminars sponsored by the Guild. If you are a woodworker who wants to learn new techniques and meet others who are willing to share their knowledge, please be our guest at a meeting and consider membership. Ask the exhibitors and members at the show about their work.

Enjoy the show!

Barry Whiteaker

President

Minnesota Woodworkers Guild

## **SOUTHDALE SOUTHDALE**

An American Original - A Minnesota Tradition

Southdale is pleased to host the twenty sixth annual edition of The Minnesota Woodworkers Guild's Northern Woods Exhibition of Fine Woodworking. We anticipate many positive responses from our customers who appreciate the arts, and we have found our work pleasantly surprises newcomers to the exhibit who are shopping at Southdale Center. It's easy to get caught up in the amazing craftsmanship and forget what you came for!

This show displays the high level of artistic talent the Minnesota Woodworkers Guild represents. The pieces in the show are made by hardworking, dedicated artisans who appreciate the traditional skills required to work with wood. There are many factors involved in the creation of the pieces on display, and each one is unique to its own creator's personality and interpretation. We hope you will appreciate this effort as you view and admire the pieces. Your most outstanding impression will undoubtedly be that of the quality of workmanship and design which you will see throughout the show.

We thank the Minnesota Woodworkers Guild for choosing Southdale as the site for this exhibition and wish its members the best of shows and much future success.

Jerry Cohen  
General Manager

The Northern Woods Exhibition Committee is composed of several guild members who volunteer their time, energy and expertise to organize this show. They meet each month, from December until the show starts. They each receive an assignment or two to make arrangements to make the show a success. Assignments consist of finding judges, making arrangements for photographers, getting the awards, ordering food for the banquet, advertising the show, receiving the applications, assembling the catalog, and many other necessary tasks needed to produce a good show. This year's committee members are:

Bob Bonde  
Bob Bridigum  
Alan Hall  
Kent Huelman  
Charlie Kocourek  
Angie Kopacek  
Jim Livers  
Bill Moore  
Chuck Pitschka  
Rutager West

If you have suggestions or comments about the show or would like to help with next year's show, please contact one of the above committee members.

To view additional pieces of work from the past eleven years of Northern Woods Exhibitions as well as our Members Gallery, please view the official website of the Minnesota Woodworkers Guild – [www.minnesotawoodworkersguild.org](http://www.minnesotawoodworkersguild.org)

## **NORTHERN WOODS EXHIBITION RULES FOR ENTRY**

Entries are limited to objects made primarily of wood. Each entrant may submit any number of pieces, but only one piece is eligible for judging. Pieces shown at previous Northern Woods Exhibitions are not eligible for exhibition, judging, or awards. The show committee reserves the right to reject a piece they deem unacceptable for any reason. All pieces must be placed on the floor on Wednesday night and all pieces must remain on the floor for the duration of the show. Larger pieces display best on attractive black pedestals four inches in height. Pedestals should have leg levelers, with rubber or soft vinyl material in contact with the showroom floor. Entrants must provide their own pedestal. Small items may be displayed in entrant or Guild-provided display cases or vitrines. Please contact the show committee if you need space in a Guild display case. Advertising is limited to portfolios, business cards, and Guild sponsored publications. All advertising must remain next to the entrant's piece(s).

Although the Guild and Southdale will have people available to monitor the show at all times, neither party is responsible for damage to, or loss of, pieces on display. The Guild has limited insurance coverage for pieces on display. However, insurance is the responsibility of the entrant. Pieces submitted after the March 18, 2007, deadline may not be eligible for judging nor inclusion in the show brochure.

Pieces submitted after the March 18, 2007, deadline may not be eligible for judging nor inclusion in the show brochure

Exhibitors are asked to work at the show's booth.

## JUDGING

All entries will be judged in a pool rather than in separate categories for each form of furniture. The judging categories are designed to reward woodworkers who are good at creating new ideas or interpreting older ones as well as those woodworkers who are skilled with machines and hand tools. The judges will score how well they liked each piece and how well it is made. Additionally, judges will offer constructive verbal comments on a voice recorder.

The judging categories have been designed to encourage you to enter a piece regardless of your status as a woodworker. It is more than a competition for prizes. The show is meant to be a display of the state of the art of woodworking in Minnesota and a chance for guild members to see what their peers have been up to in the last year. You may decide to enter a piece but not have it judged.

Each piece is eligible to receive only one award from the judges. All pieces are still eligible for the Peer Award and the People's Choice Award.

## **JUDGES' BIOGRAPHIES**

### **CHRIS MARTIN, ASSISTANT PROFESSOR AT IOWA STATE UNIVERSITY COLLEGE OF DESIGN**

Chris Martin received a BFA in Art and Design from Iowa State University and completed an MFA in Furniture Design at the Rhode Island School of Design in 1994. He has run Chris Martin Furniture, where he designs and fabricates studio art furniture, since 1995, and he is also currently an Assistant Professor at the Iowa State University College of Design.

### **GEORGE VONDRISKA, OWNER, WILD EARTH WOODWORKING SCHOOL**

George was in sixth grade when he had his first shop class, and was tremendously influenced by his teacher. Deciding he wanted to be just like Mr. Mathis, George went on to take every shop class he could and get his teaching degree in Industrial Education. One of the highlights of George's teaching career was three years with the Peace Corps in Swaziland, Africa, where he taught hand tool joinery in a rural high school.

In 1998 George and his wife, Emily, opened The Wild Earth Woodworking School on their hobby farm in Hudson, Wisconsin. The curriculum covers woodworking from soup to nuts; cabinetmaking to chair making to guitar making to lathe turning.

George has made three woodworking videos and is currently making more. He has taught woodworking to employees of Anderson Windows, Northwest Airlines, and the Pentagon. George has contributed numerous articles for American Woodworker Magazine. He currently holds one patent on a woodworking tool.

### **WILLIE WILLETTE, OWNER, WILLIE WILLETTE WORKS**

Willie Willette graduated with a BA in English and with a concentration in Philosophy from St. Johns in 1983. It was then that he realized he would be working with his hands the rest of his life. After time doing construction and creating exhibits for museums (including The Walker and The Children's Museum) he started Willie Willette Works in 1996. Willie Willette Works creates unique furniture, designed and built specifically for each client.

## **AWARD CATEGORIES**

Note that all categories are awarded at the judge's discretion. If they do not feel any one piece meets the winning criteria of a category, that category's award will not be given.

### **BEST IN SHOW**

*Sponsored by Youngblood Lumber Co. - \$1000*

The winning piece should exhibit the best qualities of most of the above categories.

### **PEER AWARD**

*Sponsored by Blue Sky Galleries - \$200*

This is decided by balloting among all Guild members coming to the show. You will be given a chance to vote for your favorite piece (other than your own) and runners up.

### **JUDGES' AWARD**

*Sponsored by Eide Saw Co. - \$250*

Sometimes a piece worthy of recognition doesn't fall into any of the award categories. It may have something special about it that is hard to define, or the judges may choose, at their own discretion, to fit any piece into this category. They may also use this award for recognizing a piece that ran a very close second to one of the other category winners.

### **BEST DESIGN**

*Sponsored by Xylos Gallery and DeWalt Industrial Tool Co. - \$200 Router Kit*

A well-designed piece of furniture must be both useful and pleasing to the eye. Will it perform its intended job? Good design is in large part a subjective opinion. It is difficult to define what good design should look like, but we can agree on how it should affect a thoughtful critic. It invites a second, more intimate look, and asks to be touched by the hand and spirit. Original designs will be given greater consideration over copied designs.



## **MOST TECHNICALLY ACCOMPLISHED**

*Sponsored by Fine Woodworking Magazine - \$300 DVD*

This is an objective assessment. The best work will exhibit a mastery of many woodworking techniques. It will respect the limitations of working in wood. Qualities to look for include flawless treatment of surfaces, precise joinery, and carefully controlled detail. The award will take into account the difficulty of the undertaking.

## **BEST HANDWORK**

*Sponsored by Forest Products Supply - \$300*

The use of hand tools carries a long and rich tradition in woodworking. Successful handwork should not be judged by machine standards. It produces surfaces and shapes that are more varied and personal, free from the limitations imposed by machines. Pieces submitted for consideration in this category must have all surfaces finished with hand tools and all joints hand cut and a description of handwork involved must be submitted for use by Northern Woods judges.

## **BEST FIRST TIME IN SHOW**

*Sponsored by Woodworkers Journal - \$400*

Whether professional or amateur this award goes to the best piece entered by a first time Northern Woods exhibiter.

## **WOODWORKING FOR PLEASURE**

*Sponsored by American Woodworker - \$300*

This prize is awarded to the best piece exhibited by a person for whom woodworking is an avocation.

## **BEST DETAIL**

*Sponsored by Highland Hardware - \$200*

The finest craftsmanship is often just a small part of a piece of furniture but it makes all the difference. This award goes to the best engineered or most deftly executed detail that really makes the piece stand out. This might be a really well done dovetail, a particularly nice carved detail, or exquisite inlay

## **BEST FINISH**

*Sponsored by Woodcraft Supply - \$200*

The finish may enhance the natural beauty of wood or alter its texture and color. A good finish elevates one's perception of the piece to which it is applied. Depth, luster, and clarity are characteristics of a good finish.

## **BEST CARVING**

*Sponsored by Lie-Nielsen Toolworks - Spoke shave*

This prize is awarded to the piece with the best use and execution of carving. It is differentiated from the Best Handwork award in that the carving is a major element of the piece.

## **BEST TURNING**

*Sponsored by Minnesota Woodturners Association - \$200*

This award honors the tradition of turning. This winning piece will exhibit quality of form as well as execution.

## **MOST DARING**

*Sponsored by TTI Group - Belt sander*

This is an award for imagination. The design of a daring piece may not be totally satisfying, and the technical ability of its builder may not be of the highest order, but the winner should offer bold and innovative ideas that push the limits of material, design and joinery. The judges will decide which entries to consider for this award.

## **THE PEOPLE'S CHOICE**

*Sponsored by Rockler Companies Inc. - \$400*

Determined by ballots submitted by the public. This award recognizes those people's favorite piece in the show.

## ADDITIONAL AWARDS

In addition to the regular awards, the Minnesota Woodworkers Guild is pleased to announce two additional awards, awards dedicated to the memories of people special to guild members.

### THE PAUL LEE AWARD

This award honors the work of the late Paul Lee, one of Minnesota's most extraordinary woodworkers. Paul learned the basics of traditional craftsmanship at Boston's North Bennet Street School and was a long time member of the Fourth Street Guild, here in Minneapolis. His work ranged from Queen Anne chairs and desks to whimsical jewelry boxes inspired by local grain elevators a turn-of-the-century brick warehouses. The award will be given to the best entry that has a playful spirit and sound construction.



In honor of my Mom and Dad  
I am pleased to announce the  
2<sup>nd</sup> Annual

### **BURTON AND RUTH ELVIG AWARD**

This award will be given annually at the Minnesota Woodworkers Guild Northern Woods Show to recognize a piece or a collection of pieces by one artist that exudes any or all of the following:

patience, spontaneity, creativity, persistence, joy, humor, tenacity, plucks, uniqueness, determination, exploration, adventure, silliness – and above all else – Love. All of these have been modeled for me by my parents.

The last 30 years in my studio would not have been possible without the encouragement of my parents but also would not have been possible without: Bruce Kieffer, Bob Kinghorn, Mary Lacer Henry Linder, Christopher Monkhouse, Bert and Nordy Rockler and Ann Jackson of Rockler Woodworking, David and Ruth Waterbury, Tom Youngblood and the Incredible Crew at Youngblood Lumber, the Great Gang at 7 Corners Hardware, and all the Wonderful Woodworker Friends/Teachers that I've met in the Minnesota Woodworkers Guild! You are part of this award as well! Thanks!

Glenn S. Elvig

**Let's do some Woodwork!**

**KENNETH ANDERSON**

631 – 20-1/2TH Ave. E, West Fargo, ND 58078 ~ 701-298-2907 ~  
kanderson@kwaconstructors.com

Ken has been an amateur woodworker for the past 30 years. He has taken several classes and workshops; he also spends considerable time studying the art of furniture design and construction. He is interested in developing contemporary designs using different materials. Typically, Ken has about five or six projects going on in the shop at the same time. When not playing in the shop, he builds custom homes.

**NO. 701 BEGINNING OF TIME**

Can you turn the clock backwards? When did time begin? What happens when time is turned back to the beginning? Does time just stop or does negative time exist? When one begins to think about time, these questions and others begin to come to mind. How can these questions be interpreted in a piece of furniture (i.e. a Clock), a clock that doesn't really tell time as we have been taught to think of time?

24" W x 16" D x 60" H

Walnut, Birds Eye Maple Veneer, Colored Concrete, Brass and Old Clock Parts

Shellac and Wax

Not for sale

## MILT BLUMENFELD

2035 Shady Oak Dr., West St. Paul, MN 55118 ~ 651-451-7474 ~ blumenfeldm@comcast.net

Milton Blumenfeld grew up in So. St. Paul, Minnesota. He created a successful photography business; shooting portraits, weddings and commercial photography for 60 years. Upon retirement, Milt experimented with several hobbies until one day he accidentally severely hurt his hand. He was told that he may never use it again. At therapy, a doctor told him to start doing easy exercises with his hand, including woodworking. That was the day his life changed. From making simple boot pulls to elaborate tables, dressers, beds and jewelry boxes, his life changed forever. Now he feels totally fulfilled working with wood.

### NO. 702 TABLE WITH CHESSBOARD AND PIECE STORAGE

This chess-table represents, to both my wife and I, our private, quiet time. It stands in our den where we sip tea and enjoy each others company. I believe more people should do this.

24" W x 24" D x 26" H  
Maple and Walnut  
Rub-on varnish  
Not for sale



**DENNIS CHILCOTE**

2853 - 41<sup>ST</sup> Ave. S, Minneapolis, MN 55406 ~ 612-729-0878 ~ [chilc001@tc.umn.edu](mailto:chilc001@tc.umn.edu)

Dennis is a tree worker. He loves working with bark and root as well as wood. His grandfather, who hunted deer for the lumber camps that harvested great stands of white pine in northwestern Minnesota, filled him with stories of an early wilderness that left him fascinated with nature crafts. As Dennis grew up, he spent his free time in his father's workshop or roaming the woods, always tinkering with the possibilities of expressing art through craft. His work is a celebration of all that he finds beautiful in wilderness.

**NO. 704 BLACK ASH BASKET**

Made from black ash splint, birch, sweet grass and black ash burl.

10" Diameter.  
Please inquire for price

**NO. 705 BIRCH BARK BOX**

Made from birch bark, maple, and black ash burl.

6" Diameter.  
Please inquire for price



## MARK DAL SIN

11020 Yukon Circle, Bloomington, MN 55438 ~ 612-845-3764 ~ [mdalsin@comcast.net](mailto:mdalsin@comcast.net)

Mark spent his entire work life working with metal. He always appreciated the beauty in wood, but as a second generation member of a family business he never had time to think much beyond metal. Following his retirement a few years ago he got into construction with Habitat for Humanity and then into furniture making. He loves to work with reclaimed and figured wood, spending hours trying to release its hidden beauty. All of the pieces he's made so far have gone to family members and friends or to help furnish the family cabin.

### NO. 706 PILGRIM'S FOOTSTOOL

A couple of years ago I walked the Camino de Santiago (a pilgrimage across northern Spain). At the end of the pilgrimage I bought some tiles to remember the walk, thinking I could work them into something in the future. They were quickly forgotten until recently I found myself working on these two stools and remembered the tiles. What better place to use something that commemorates a walking pilgrimage than a rest for ones feet!

12" D x 20" W x 16" H  
Jatoba & Ceramic Tile  
Oil Varnish Mix & Wax  
Not for sale





## GREG DEAKINS

7528 Country Club Rd. SW, Byron, MN 55920

Greg received fundamental knowledge of woodworking while employed in a production cabinet shop. For almost a decade, he has been working in various facilities of his own in locals such as Florida, downtown Detroit, and rural Minnesota. He has no formal education in woodworking. Greg enjoys arduous tasks that require strict determination. His view of art as a combination of three elements, foresight, time and skill, are reflected in his work.

### NO. 707 "RIFLES AND ROSETTES" TABLE

The piece submitted here is entitled "Rifles and Rosettes", and has origins from the early years of Greg's drawings. The concept, in fact, began as a simplistic particle board design. It began in his downtown Detroit studio last year and put on hold until recently discovering this show a month ago; which was the catalyst to finish it.

30" L x 36" H

Bubinga, Mahogany, Lyptus, and Stainless Steel

Teak Oil and Wax

Price: \$1540



## JAMES DONAGHY

414 River Street, Minneapolis, MN 55401 ~ 612-343-8135 ~ [bluebilla@aol.com](mailto:bluebilla@aol.com)

I learned the elements of wood working as a seventh and eight grade student in public school with support from my uncle with whom I lived. During my working years as a business man, I had some tools and a radial arm saw which allowed me to make repairs around the house, but no real wood working projects. After retirement eight years ago, I invested in a more complete shop and started to make early American furniture from designs of eighteenth century craftsmen.

### NO. 708 CHEST OF DRAWERS

The Piece is a replica of an eighteenth century four drawer Pennsylvania chest. The chest is made of cherry wood, has dovetail construction throughout, carved OG feet, and cockbeading around drawer fronts. Brasses are authentic reproductions from Ball and Ball of Exton, Pennsylvania.

20-1/2" D x 38" L x 38-7/8" H

Cherry wood

Gel Stain and Polyurethane

Not for sale



## TRACY DONOVAN

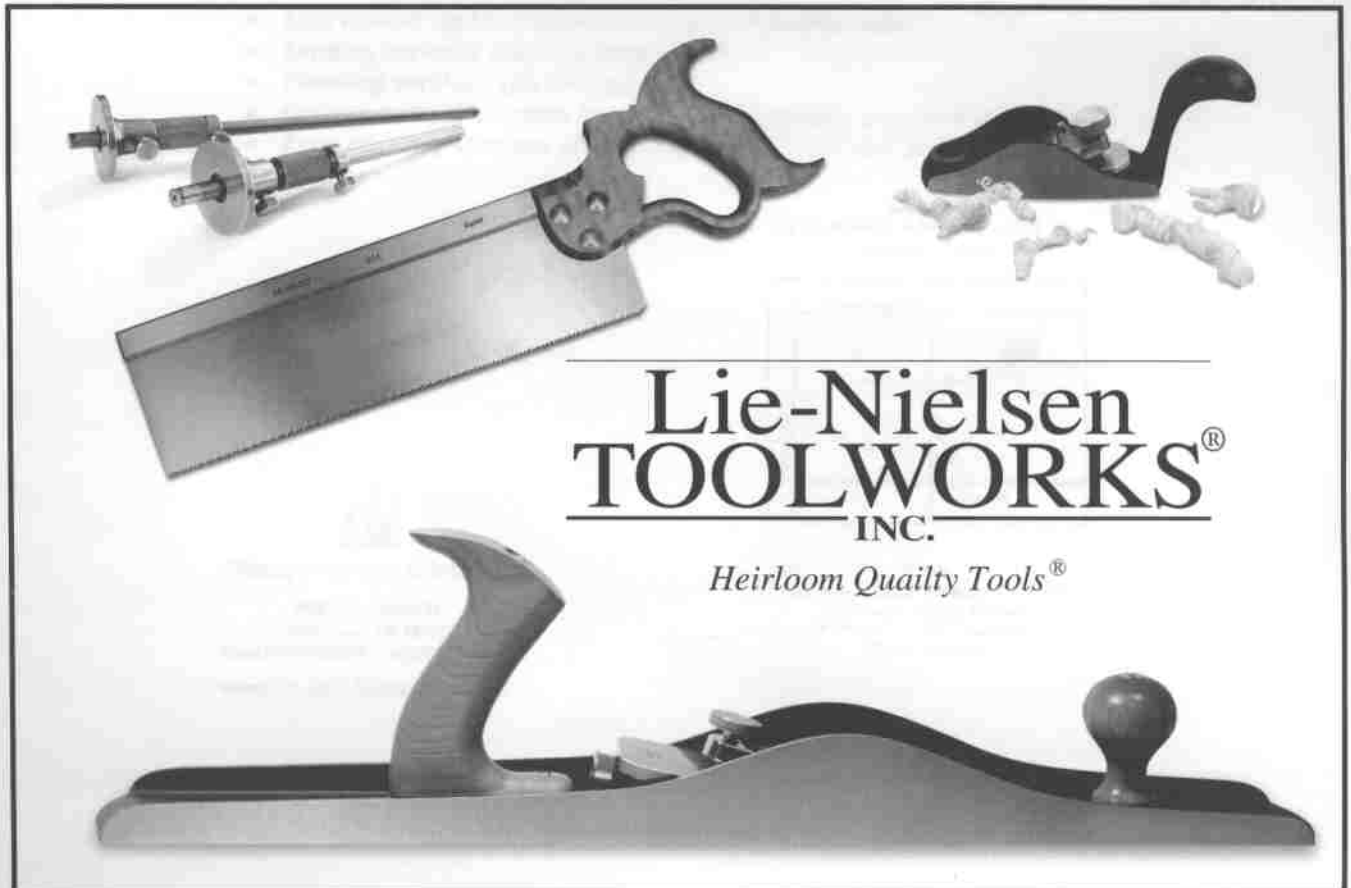
510 Main St., Farmington, MN 55024 ~ 651-460-4685 ~ treeofindia2003@yahoo.com

Tracy came to woodworking through boatbuilding, first a cedar strip canoe built with her grandfather, and later as an apprentice to a shipwright. Recently her work has been a series of tables inspired by water and plant shapes. Some of her pieces are on display at Blue Sky Galleries, in Northeast Minneapolis.

### NO. 709 VOLUPTUOUS LEAF CHAIR

This chair is the newest incarnation in a series of plant-inspired works, and the first to involve upholstery. The three legs and back-rest support are black walnut. The upholstery is hand-dyed and painted.

23" W x 25" D x 35"



## JOEL FICKE

15384 – 125<sup>th</sup> Street, Bloomer, WI 54724 ~ 715-577-6707 ~ joelf2007@yahoo.com

Joel has been involved in woodworking for about 10 years, but it's only in the last two years that his interest peaked in duplicating the finest museum pieces available from early America. Faithful attention to detail is practiced; including wide stock selection, grain matching, hand tool use, joinery, intricate carving, authentic glues, and hand applied finishes. Trained as a chemist and engineer, Joel finds building furniture a therapeutic alternative to hectic days in the office.

### NO. 710 1769 PHILADELPHIA HIGH CHEST OF DRAWERS

Highly influenced by the acclaimed Gratz High Chest from Winterthur Museum, this piece took over two years to complete. It is constructed from wide mahogany as the original was and stands a massive 8'-5" high. Every surface was prepared by carving gouges or hand planes. A quick run of your hand along the swan-neck molding demonstrates the hand-made feel authentic to early America. Can you find the five hidden drawers? Stop by and see the original on display for a few more weeks at the Minneapolis Institute of Arts.

8'-5" H x 46-1/8" W x 21-3/4" D  
Mahogany and White Pine  
Aniline Dye, Shellac and Wax  
Please inquire for price



## KARL FOORD

1950 Park Ridge Ct., Chaska, MN 55318 ~ 952-448-2911 ~ foord001@umn.edu

The men in my father's family were hobby woodworkers. In 1995 I moved to Minnesota and set up a basement woodshop. Starting with clock kits, I improved my skills by volunteering at the Kuempel Chime shop and attending an American Sycamore workshop. My father-in-law Ole and I began a tradition of making a jeweler's size clock for family newly weds. When Ole retired he gave me his machinery. I continue to upgrade my shop and improve my skills. My goal is to begin a profitable woodworking business when I retire from the University of Minnesota.

### NO. 711 GRANDSON PARKER'S TOY STORAGE TRUNK

This trunk exhibits several facets. Child safety is designed into it by means of 45° corners, Basswood struts and "soft down" supports. The Raised panels and natural finish matches this piece to existing furniture. The trunk was build using "rescued" wood from a discarded futon. Holes in the wood, hidden inside the trunk, give tribute to the reuse. The nameplate remains perpendicular to the viewer as the lid closes.

44" L x 28-1/2" H x 21" d  
Maple and Basswood  
Velvet Oil  
Not for sale



**AL FRANK**

6619 Parkwood Lane, Edina, MN 55436 ~ 952-938-3841 ~ [al.frank@learningmasters.com](mailto:al.frank@learningmasters.com)

I do woodworking as a hobby. I've been a guild member for about five or six years. Being a member has introduced me to many new interesting techniques and methods for creating my woodworking projects. I try to apply as many techniques as possible in my work. This mirror was inspired by Mark Laub, who introduced me to patinating copper as a way to add embellishments to my work.

**NO. 712 JAPANESE DOGWOOD MARQUERTY TRAY**

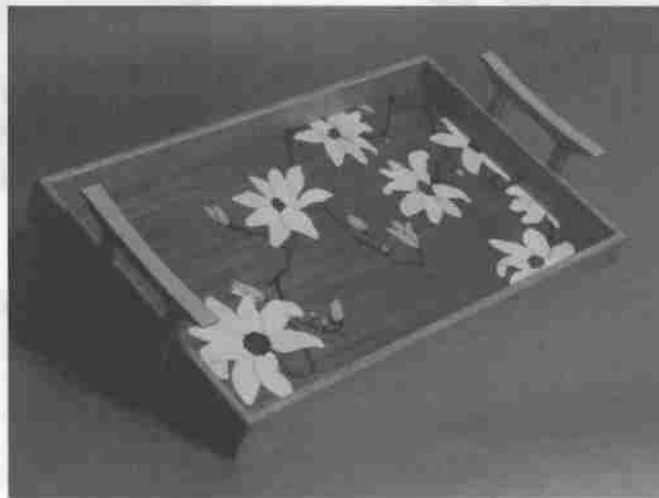
I used the golden rectangle proportions to determine the dimensions of the tray. I used double-bevel marquetry to create the base of this tray. The design was inspired by a Japanese block print wall hanging.

18" L x 11" W x 2" H

Mahogany for the background, Holly for the flower petals, Black Walnut for the branches, Pau Amarillo for the flower buds, Bloodwood for the centers of the flowers, and Ebony for the base of some flowers. The handles are made of Cherry.

Varnish

Not for sale



## JIM FRANKARD

175 East Lake Blvd, Winona, MN 55987 ~ 507-454-3274 ~ jim3@hbi.com

Jim grew up in Milwaukee, WI, spent eleven years as an Air Force pilot, and then joined the Peerless Chain Co. in Winona. He retired after 25 years as the Vice President of Engineering. He then spent three years building a Glasair III fiberglass sports plane. It won the 1990 award at the Oskosh Fly-In for Outstanding Workmanship. He became interested in woodworking, turned his garage into a shop, and has built 14 pieces of furniture of his own design.

### NO. 714 KEEPSAKE TABLE

The legs and frame are made of black walnut and the shelves and drawers are made of butternut. The finish is sprayed lacquer. This table is used to store and display a life's worth of family keepsakes.

17" W x 60" L x 36" T

Black Walnut and Butternut

Sprayed Lacquer

Not for sale



**JACK FROST**

2324 Maple Lane, Maplewood, MN 55109 ~ 651-777-8019 ~ [jl frost@tcinternet.net](mailto:jl frost@tcinternet.net)

I have been woodworking for the past twenty years as a hobby. In the last five years I have been mainly interested in woodturning. I am a member of the Minnesota Woodturners Association and I am on the board of this organization.

**NO. 715 BOWL**

This piece was inspired by Southwest Indian pottery.

6" x 6"

Cherry and Walnut

Oil

Not for sale





## **BART GENOVESE ~ BMG FINE FURNITURE**

*Scandia, MN 55073 ~ 651-210-4214 ~ [handbuiltfurniture@gmail.com](mailto:handbuiltfurniture@gmail.com)*

Bart's love of woodworking was inspired through weekends in the basement with his father "helping" him make wooden toys for his family and the occasional craft show. Working as a hobbyist throughout school and his career as a Mechanical Designer, Bart continued to make furniture for family and friends. Today he designs and builds custom furniture from his workshop near Scandia. He recently completed a 12 week course at Rosewood Studio in Almonte, Ontario, studying under Ted Brown, Ron Barter, and Adam Kropinski.

### **NO. 716 DEMILUNE TABLE**

This classic 18<sup>th</sup> century Federal style demilune table features solid mahogany tapered legs joined with floating tenons and a bridal joint to the apron, which is a bent lamination also out of mahogany. For the top, European sycamore veneers were used for both the field and the sand shaded fan, which is bordered by European walnut. The crossbanding on the outer edge of the top is sapele with dyed boxwood inlay. It is finished with super blonde shellac and Clapham's beeswax. This table was my final project for the 12 week artisan course I recently completed at Rosewood Studio in Almonte, Ontario.

28" L x 14" W x 29" H

Mahogany, European Sycamore Veneers, European Walnut, Sapele and Boxwood

Shellac and Wax

Please inquire for price



## TIM GORMAN

4200 Washburn Ave. N, Minneapolis, MN 55412 ~ 612-522-7091 ~ timothy.gorman@usbank.com

Tim Gorman began building furniture during his study at the University of Michigan, School of Art and at the University of Kansas. Since 2000, his work has garnered awards in a number of venues, including the Minnesota State Fair, Northern Woods Exhibition, and the Contemporary American Woodturning Exhibition. He is also a recipient of the 2007 Minnesota State Arts Board Artist Initiative Grant. He has been a member of the Minnesota Woodworkers Guild since 2001.

### NO. 717 "BASKET OF WISHES" TURNING

The design for this turning was inspired by patterns on some Native American woven baskets, primarily those done by Navajos. I also wanted to explore the idea of a basket as a metaphor for the mind: a vessel for dreams and aspirations. I gave the interior a different finish than the outside, emphasizing the significance of its contents, though, like wishes, they can't be seen.

11" Dia. x 5" H

Ash, Ebony, Maple, Cocobolo, Epoxy  
Danish Oil and Paste Wax

Price: \$1500

### NO. 718 "JULE'S REFLECTION" MIRROR AND FRAME

This Mahogany and maple frame was inspired by Art Deco designs of the early 20<sup>th</sup> century. Originally a frame for one of my figure drawings, it was converted to a mirror because its visual mass seemed to demand weightier contents and I have also always liked the idea of the viewer becoming a part of the piece.

32" W x 38" H x 4" D

Honduran Mahogany, Curly Maple, Ebony, Ivoroid and a Beveled Mirror  
Padding Varnish

Price: \$1400

## TIM HEIL

3800 Big Fox Road, Gem Lake, MN 55110 ~ 651-492-3047 ~ [tim@heiltruckbrokerage.com](mailto:tim@heiltruckbrokerage.com)

In 1966 I saw my first lathe in Mr. Pennings 8<sup>th</sup> grade shop class. I quit the basketball team so I could spend my activity time working wood. Four years ago I joined the Minnesota Woodturners. I want to make beautiful things. I turn with the idea that my best project is my next project.

### NO. 719 ARTIST'S PAINTBRUSHES

Painter's palette and paintbrushes.

8" to 14" Long

Cocobolo, Mahogany, Buckthorn, Cherry, Apple, Black Walnut

Lacquer

\$50 each



**RICHARD HELGESON**

*Box 11321, Minneapolis, MN 55411 ~ 612-964-1674 ~ rarewoods@earthlink.com*

Richard Helgeson designs and builds furniture in a cooperative shop in Minneapolis. His work is a mixture of residential and liturgical, and may also be seen at the Xylos Gallery at 3020 West 50<sup>th</sup> Street in Minneapolis.

**NO. 720 LIGHTED DISPLAY CABINET**

This display cabinet features a reversible back panel and two lighting options. The back panel has English sycamore on one side and ebony on the other. Rows of LED lighting are rebated into the front columns and provide a brightly lit display when used with the English sycamore side. A halogen downlight gives a warmer, softer light when used with the ebony side.

20"W x 15" D x 78" H

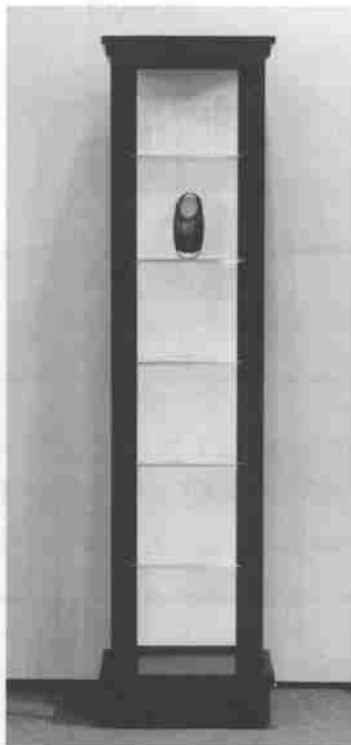
Dyed Ash. Back panel veneered with English Sycamore and Ebony

Contributors: Richard Helgeson – Designed and built prototype

Laurie McKichan – Built and finished the cabinet

Chuck Pitschka – bored shelf pin holes in the custom shelf supports.

\$3400



## JASON HOLTZ ~ J. HOLTZ FURNITURE

1879 - 80<sup>TH</sup> Ave., Dresser, WI 54099 ~ 715-755-3548 ~ [jason@jholtz.com](mailto:jason@jholtz.com)

Jason Holtz is a third generation craftsman. He began formally pursuing his interest in furniture design and construction while studying pre-architecture at the University of Minnesota. Soon after, he quit his formal schooling to embrace a different path as a woodworker's apprentice. After completing an apprenticeship program in Chicago with chair maker Jeff Miller, Jason went to work at high end furniture shops in Chicago while, at the same time, building custom furniture professionally for ten years. Jason has recently relocated and set up shop in Dresser, Wisconsin. For more information, call Jason at 715-557-0328 or visit [www.jholtz.com](http://www.jholtz.com).

### NO. 721 OM 1 GUITAR

When I began woodworking, my passion for playing the guitar was sort of replaced. I saw hand building an instrument as an opportunity to unite the two, and hopefully spur me to play more. Even throughout the building process I have been playing more than I was previously. I hope it continues.

42" L x 15" W x 6" D

Sitka Spruce, East Indian Rosewood, Mahogany, Macassar Ebony, Gabon Ebony and Paua

Abalone

Lacquer

Not for sale

## JIM JACOBS

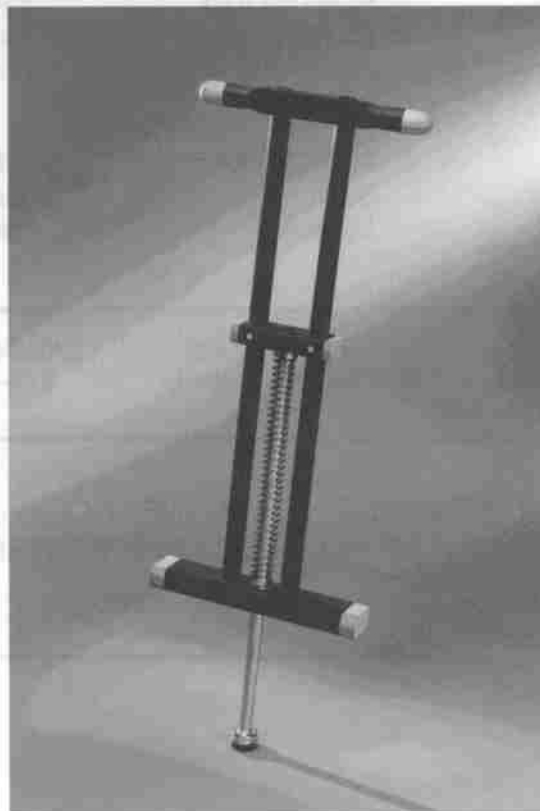
1161 West 14<sup>th</sup> St., Hastings, MN 55033 ~ 651-437-2302 ~ woodmanmn@aol.com

Jim started woodworking at age 12 while growing up on a farm near Rochester. Projects included bird feeders made from his Dad's snow fence and a doghouse made from 1" x 6" pine. After taking all of the shop classes in school, he decided on cabinetmaking as a career and has since worked in this trade for the last 30 years, mainly doing custom work, both residential and commercial. Jim lives in Hastings and still enjoys tinkering in his home shop, where he concentrates on woodturning. He is a current member of the Minnesota Woodturners and the American Association of Woodturners organizations.

### NO. 722 POGO STICK

Antique reproduction pogo stick.

24" H x 14" W x 2" D  
Cocobolo and Maple  
Natural Finish  
\$750



## **CRAIG JENTZ**

5217 Logan Ave. S, Minneapolis, MN 55419 ~ 612-922-0734 ~ [cj0734@msn.com](mailto:cj0734@msn.com)

Craig is an avid woodworker who, over the years, has built the majority of the furniture for the home he shares with his "workshop-time" and "sawdust tolerant" wife and two boys. He enjoys the design process and focuses on incorporating curved planes and lines in his work.

### **NO. 724 CREDENZA**

This piece and its "still under construction" matching china cabinet were built to compliment a pair of sofas and a dining room set I made in the mid 80's and early 90's. The fiddle-back maple arches mimic the sofas, and the cherry panels tie in the dining set.

81" L x 30" H x 24" D

Cherry and Fiddle-back Maple.

Lacquer

Not for sale

## **WALLACE JOCOBSON ~ JACOBSON WOODWORKING**

1733 Stanbridge Ave., Roseville, MN 55113 ~ 651-402-1227 ~ [wallace.jacobson@isd623.org](mailto:wallace.jacobson@isd623.org)

I have been the Woodworking instructor at Roseville Area High School since 1998. With twenty-two years of teaching experience, as well as doing woodworking for thirty-five years, I am enjoying woodturning as one of my true passions. It gives me the freedom to use my creative juices in a non-square fashion. Finding the beauty inside a piece of wood always brings a sense of accomplishment and fulfillment. I have operated my woodworking business of custom furniture and cabinet making for thirty years.

### **NO. 723 COOKIE JAR**

10" Dia. x 7-3/4" H

Curly Box Elder, Curly Walnut, Red Oak and Paduk

Deft Oil

Please inquire for price

## JUSTIN KINDELSPIRE

STAGSWOOD

5330 Pennsylvania Ave. N, New Hope, MN 55428 ~ 612-424-0465 ~ [jkindelspire@gmail.com](mailto:jkindelspire@gmail.com)

Justin is a mostly self-taught woodworker. His father, a cabinetmaker, introduced him to wood-working when he was young. He now works with his father in Rogers, Minnesota, making custom cabinets. James Krenov and George Nakashima provide Justin with most of his inspiration, but trips to Room & Board and similar stores also prove fruitful. He has been making furniture for friends and family for about three years now.

### NO. 725 WINE CABINET

The inspiration for this wine cabinet came from some copper bottomed serving trays I made. It is intended for someone who enjoys wine, yet doesn't have the space for a cellar. It provides a special place to store a case of wine, a dozen glasses, and other paraphernalia. The hammered copper top will stand up to spills and moisture better than a solid wood top.

25" L x 16" D x 38" H

African Mahogany, Walnut, and Hammered Copper.

Lacquer finish.

Please inquire for price



## DAVID KLOCKE

1446 Bell Oaks Lane SW, Rochester, MN 55902 ~ 507-282-2385 – rustyplane@hotmail.com

David Klocke has been woodworking for many years. He is mostly self taught with the exception of several classes attended the past few years at Anderson Ranch in Colorado. He works part time at home and designs most of the furniture that he builds. He concentrates on hardwoods and does a significant amount of hand carving, shaping, planning, marquetry and other ornamentation on the pieces he builds. Recently he tried his hand at wood boatbuilding as well. He has done occasional commissioned pieces for clients, but builds many pieces for the use of himself and other family members.

### NO. 726 CEDAR STRIP KAYAK

This is my first attempt at building floating furniture. I used a design from Redfish Kayaks in Washington and built this entirely from a set of plans. It is built mainly of cedar strips and accented with white pine and walnut strips. The cockpit is made of laminated mahogany. This piece melds my love of woodworking and boats.

17' L x 12" D x 20" W

Cedar, White Oak, White Pine and Walnut

Fiberglass, Epoxy and Marine Varnish

Not for sale



## ROGER KNUDSON

25470 Hwy 18, PO Box 264, Finlayson, MN 55735 ~ 320-233-6543 ~  
rwknudson@frontiernet.net

I am retired from a career in correctional education in the Minnesota Department of Corrections. I build furniture for fun and sometimes on commission. Last fall I attended a two-week course in Design and Craftsmanship at the Center for Furniture Craftsmanship in Maine. Instructors Ross Day and Thomas Hucker provided a huge boost to my skills and enthusiasm for furniture building.

### NO. 727 ELLIPTICAL JEWELRY CASE

This piece was begun in a class at the Center for Furniture Craftsmanship. It is my first experience with veneering and use of a vacuum bag, all this coming from a "solid wood man"! More veneering to follow!

24" H x 16" W x 9" D

Curly Ash Veneer on Bending Plywood

Shellac

Not for sale

## TONY KUBALAK

3660 Robin Lane, Eagan, MN 55122 ~ 651-452-2021 ~ [apk@uwalumni.com](mailto:apk@uwalumni.com)

I have been a period furniture maker since 1999. I am interested in high style Queen Anne and Chippendale pieces. All of my period projects have been faithful copies of originals that are part of museum or private collections. I strive to make my pieces as close to the originals as possible. This includes surface texture and hand tool marks as well as construction details. In addition, I strive to give the finish an aged look and feel. The goal is to have a piece that looks and feels 250 years old.

### NO. 728 SERPENTINE BOMBE' CHEST OF DRAWERS (1780-1790)

This chest of drawers is a reproduction of the Gardiner Greene piece that is owned by the Dietrich American Foundation and is on display at the Metropolitan Museum of Art. It is believed to be from the shop of John Cogswell of Boston, Massachusetts. Each side is one piece and it was extracted from a 3" thick by 22" wide block of mahogany. The feet were carved from cutoffs from the side boards. In addition, the top is a single board that is attached to the sides with sliding dovetails. The bottom three drawers were constructed using angled sides, an angled front and joined with angled dovetails. Each drawer front came from a 2" thick block of wood and was sculpted to conform to the bombe' shape top to bottom and the serpentine shape left to right. The outer drawer sides conform to the bombe' shape, but the insides are flat and angled. The beading surrounding the drawers is carved from the solid on both the sides and the drawer dividers. The most complicated, and time consuming, portion was the fitting and sculpting the drawers. The plans I used for this chest were supplied by Robert Whitley of New Hope, Pennsylvania.

36-1/2" W x 20-3/4" D x 32-1/4" H  
Honduran Mahogany, Pine  
Aniline dye, Shellac and Wax  
Please inquire for price

**DAVID LANE**

4648 Aldrich Ave. S, Minneapolis, MN 55419 ~ 612-822-6362 ~ lanemnwg@yahoo.com

David is a librarian by trade and enjoys building boxes and other objects using mostly hand tools. His latest favorite toy is a Record plough plane....groovy.

**NO. 729 KAREN'S MEMORY BOX**

Our family has had a tradition of memory boxes for saving notes and other mementos. We filled one box and so I made another using leftovers from the shop.

12" W x 5" H x 8-1/2" D

Ash, Oak, Purplehart

Sam Maloof Oil/Varnish Finish

Not for sale



## DAVID LANG

8130 – 60<sup>TH</sup> Ave. N, New Hope, MN 55428 ~ 763-537-1549 ~ [doclang@comcast.net](mailto:doclang@comcast.net)

Starting at the age of 14, Dave apprenticed first as a carpenter and then as a patternmaker in Detroit, Michigan. In his early twenties he changed vocations and spent the next 25 years in computers and communications. Recently he came back to wood and has been honing old skills and learning new ones. He designs all of his projects himself but is strongly influenced by the classic and utilitarian designs of Stickley and the Arts and Crafts movement of the early 20<sup>th</sup> century. He likes to mix woods and always tries to add a little whimsy to his pieces.

### NO. 730 SOFA TABLE

I was inspired to build this piece after attending the 2006 Northern Woods. As always, I did a detailed design and, as usual, the finished product bears only a passing resemblance to that design. Stickley, Duck Dodgers and a bloodwood heart that I carved for my wife on Valentines Day influence the piece

52" L x 30" W x 14" D

Bloodwood, Quartersawn White Oak, Red Oak

Hand rubbed Polyurethane

Please inquire for price



## MARK LAUB ~ THE BOARD ROOM

3750 – 211<sup>TH</sup> Lane NW, Oak Grove, MN 55303 ~ 763-753-1368 ~ [boardroomstudios@gmail.com](mailto:boardroomstudios@gmail.com)

Mark Laub jumped off the corporate railway seven years ago and started a small furniture company called The Board Room. He was learning little on the rails and now learns life lessons by exploring the ditches. Laub's studio is in a quiet forest on the Rum River and it is easy to see how his work celebrates the sublime beauty of nature and reflects its showy diversity. He uses contrasting woods, gentle curves, floral inlays, aged copper, carving and unexpected smile producing surprises to produce his interpretation of nature's beauty. Laub believes that wood working, nature and all of life are hugely impacted by detail and subtlety. He attempts to, as William Blake suggested, "see the world in a grain of sand." When not building furniture, Laub enjoys a bottle of good (or cheap) wine and listening to music. When the two are combined he will endlessly argue with himself as to the greatest piece of music ever written: as of yesterday Neil Young's "After The Gold rush" is closing in on Chopin's Nocturne (op. 9, No. 2).

### NO. 731 "AFTER THE GOLD RUSH" LINGERIE CABINET

This is the second in a series of sculpted furniture featuring carved Calls Lilly legs. The cabinet has sculpted waterfall bubinga casework which appears to float within highly figured maple leg posts. The delicate organic feel of the piece is accented by floral inlays and aged copper. Surprising details are hidden within the drawers.

50" L x 48" H x 18" D

Bubinga, Maple, Copper, Brass, and Veneers of Ebony, Wenge, Kiatt, Yellow heart, Spanish Cedar and Narra

Hand rubbed oil and Wax

Please inquire for price

## BERT LEVY ~ STUDIO L FURNISHINGS

W11545 – 478<sup>TH</sup> Ave., Prescott, WI 54021 ~ 715-262-3224 ~ [Burt@StudioLfurnishings.com](mailto:Burt@StudioLfurnishings.com)

It could be said that my professional life has come full circle. As a self-taught woodworker, I opened my first shop in 1972, concentrating on period reproduction and contemporary furniture. As the business grew, I merged with another shop, which at the height of its operation had eleven employees. After twelve years of wide experience in woodworking, I turned to pursue a career as a commercial photographer, specializing in architectural, interior, and studio product photography. I did this until a remodeling project on my own house in 1998 rekindled a desire to work with wood. Finding it more meaningful to build custom furniture that people could use and enjoy every day, I closed my photo studio to resume my evolution as a craftsman. I now reside in a new house (that I'm still completing) south of Prescott, Wisconsin. The adjacent woodworking studio (which will never be finished) has ample space, great natural light, high ceilings, and fantastic views. It provides me with an inspiring environment for doing the most satisfying work of my career.

### NO. 732 EPIHEMERAL SOFA TABLE

The ephemeral in the title of this piece refers to the floral decoration and, hopefully, not the longevity of the table. These native wildflowers grow in proximity to each other in high-quality maple and basswood forests. They erupt from the forest floor prior to the trees leafing out and, as spring progresses and the forest floor becomes shaded, both the flowers and their leafy vegetation fade away and wait to complete the cycle the following spring. I initially sketched these plants from life last spring near Maiden Rock, WI. I developed the marquetry patterns at a later date from the reference sketches.

72" L X 18" D X 30" H

Honduras Mahogany, Pommele Sapele, Wenge. Veneers: African and Brazilian Satinwood, Big Leaf and Curly Maple, Poplar, Figured Anigre, Cerijeira, Fiddleback Walnut and Mahogany, Bubinga, and Plantree

Lacquer finish by Mike Roe, Roe's International Furniture Services

Please inquire for price



## JASON MATH

415 – 3<sup>RD</sup> St. SW, Medford, MN 55049 ~ 507-339-9751 ~ Jason@fielddredspringer.com

After leaving woodworking during high school 20+ years ago, I have returned to it with a passion over the past three years. My main area of interest has been simple Arts and Crafts style rectilinear furniture made from exceptional wood. I have also dabbled in some antique repair, refinishing and reproductions, which is what inspired this piece.

### NO. 733 “INSTANT ANTIQUE” BLANKET CHEST

This blanket chest was a gift for recently married friends. When I discovered this extraordinary 22” wide white pine board I knew it needed to become something special. The inspiration came while repairing and refinishing an antique carpenter’s chest with a colleague. My intent with this piece was to instantly create a timeless family heirloom. By carving only “07” for the year and distressing the box before finishing, I leave it to the viewer to wonder if it was crafted in 1907 or 2007 . . . and hopefully it will be passed on and still cherished in 2107.

20” D x 43” W x 22” H

White Pine and White Oak

Pigment Stain and Sprayed Varnish.

Not for sale (Please inquire about personalized reproductions)





## SCOTT MCGLASSON ~ WOODSPORT

550 Vandalia St. #314, St. Paul, MN 55114 ~ 612-802-9006 ~ [www.woodsport.net](http://www.woodsport.net)

Scott McGlasson is the owner of Woodsport, an independent woodcraft and design studio based in the Twin Cities. Mixing traditional techniques with an experimental approach, Woodsport creates original, heirloom quality furniture and interiors for residential, corporate, and institutional clients. Working in a wide array of materials, Scott creates each piece by hand in our St. Paul studio. Woodsport has won awards for our collaborations with architects and designers and our work has appeared in numerous publications.

### NO. 734 RUSTIC MODERN CREDENZA

The idea was to create a beautiful piece of furniture from woods that have been locally grown and harvested in order to reduce the distance between origin, manufacturing and end use, while accentuating the natural characteristics of these, some may say humble, species. I used heartwood of the birch, which was discarded scrap from another project, and colored the ash to embrace its deep grain. I've also tried to achieve a balance between functionality and craft, providing modern features and clean lines set off by not overly fussy rustic detailing.

78" L x 21" D x 22" H

White Ash, Birch, and Cast Bronze Feet

Pigmented and Clear Lacquer

\$2000

**LAURIE MCKICHAN**

3212 Manor Drive, Golden Valley, MN 55422 ~ 612-275-2037 ~ [lmckichan@hotmail.com](mailto:lmckichan@hotmail.com)

laurie began designing furniture as a creative outlet. Living in an apartment, access to wood-working was initially restricted to community education programs and facilities. Spending several hours a week, Laurie gradually developed her skills and was able to build a portfolio. Two and a half years after her first woodworking class, she left her career in Film and Video Production in order to pursue her dream of designing and building furniture full time. Today, Laurie owns her own business and produces custom furniture for her clients and for other woodworkers. Laurie's work has also been recognized by her peers and she was awarded the "Top Drawer" award for her Pagoda Music Stand, exhibited during the 2005 Northern Woods Exhibition.

**NO. 735 LIFETIME PURITAN LINE CHAIR AND OTTOMAN**

Inspired by the Lifetime Puritan Line of furniture, this piece has a matching sideboard/dresser, bookcase, end table and bed.

Chair: 33" W x 28" D x 39" H Ottoman: 22" W x 16" D x 14" H

Cherry

Velvet oil

Please inquire for price

**NO. 736 M CHAIR AND OTTOMAN**

Inspired by the Morris Chair. Made from modern materials.

Chair: 33" W x 28" D x 39" H Ottoman: 22" W x 16" D x 14" H

Baltic Birch Plywood

Velvet oil

Please inquire for price

## THOMAS MENKE

1618 Central Ave. NE, Studio 120, Minneapolis, MN 55413 ~ 612-789-9989 ~ thomasmenke-mail@yahoo.com

Thomas Menke is primarily a furniture designer and maker. He works from his Northeast Minneapolis studio. Working for a variety of private and commercial clients, Thomas tends to pursue modern designs, but has also been known to find inspiration in the traditional and eclectic.

### NO. 737 TRESTLE TABLE WITH LEAF EXTENSIONS

This is the latest in a series of similar tables. It is the first to have breadboard ends, extensions and the addition of pins in the mortising. The white oak lumber is unique. These are staves reclaimed from very old brewery vats, more than likely salvaged from Fleckenstein's Brewery in Faribault, which was torn down in the middle of the last century. The table is an original design including the leaf extension system. Working with the trestle design has so far been extremely rewarding – on one hand the motif is historical and rustic, yet because of a timeless essence it can be simultaneously modern.



84" L (120" extended) x 38" W x 30" H  
Reclaimed Heavy White Oak and Walnut pins  
Custom dark stain and Polyurethane  
Not for sale



### NO. 7XX LAM-BEAM TABLE/BENCH

48" L x 16" W x 18" H  
Top: Micro-Laminate Beam, Base: Baltic Birch Ply-wood  
Finish Top: Polyurethane, Finish Base: Brown Enamel Paint

\$475

## GERALD PEASE

1328 – 78<sup>TH</sup> Circle, Spring Lake Park, MN55432 ~ 763-785-2984 ~ daeyeguy@yahoo.com

I am a Minnesota native from the Hastings-Pine Bend area. Foolishly enlisted in the Army in 1969 and got sent to Viet Nam for 14 months. Surprise! Currently I am a practicing optometrist but would like to make the jump to woodworking as a retirement, mad money type of thing. I've played around with various forms of construction for a hobby and started to get much better after I rang up some huge bills at Rockler of Maplewood for some decent tools. It's my brother's fault. He brought me in there!

### NO. 738 FRANKIE'S LAMP TABLE #1

This table is an original design, of course. (Using plans would be about as much fun as "paint by numbers".) The wood is partly from a guy's stash of walnut that had been in his garage for 40 years! The rest is maple from Rockler and walnut from Youngblood Lumber. This is my first attempt at making a furniture piece and was built for my wife's mother's prize heirloom lamp.

26" L x 18" W x 22"H  
Walnut and Maple  
Oil and Urethane, Wax  
Not for sale



**FRAN PETERSON ~ HOMECRAFTERS CONSTRUCTION CO.**

6912 Washburn Ave. S, Richfield, MN 55423 ~ 612-861-1180 ~ fpeterson3@cs.com

Fran started making furniture as a hobby several years ago. He has, over the years, grown his shop into a cabinet making business. Fran grew up with a father who built furniture and they shared a passion for working with wood and creating new pieces. His father recently passed away and Fran is carrying on the woodworking tradition in his family.

**No. 739 STICKLEY DINING TABLE**

This table was something I found in a book called In the Craftsman Style from the editors of Fine Woodworking. I modified the design slightly to fit our dining area. I also wanted to incorporate marquetry on the table top after taking a class from Mark Laub.

70" L X 42" W x 30" H

Curly Soft Maple

Polyurethane

Please inquire for price. Commissions welcome.



## MIKE PFEIFER

11326 Rosemill Lane N, Champlin, MN 55316 ~ 612-239-6041 ~ [mikepfeifer@comcast.net](mailto:mikepfeifer@comcast.net)

I have been a woodworker for 17 years. I generally work on cabinetry projects or furniture. The last couple of years I've been very interested in making boats and doing inlay work on the top decks. I had two kayaks in the Northern Woods Show last year and would like to make more of them. I work at home in my garage (it's heated) and have enjoyed making sawdust for all for these years.

### NO. 740 INLAYED BOX

The box has a hinged lid and contains bird nests. I was trying to combine a little inlaying practice with a little nature. We had the nests around the house and the old pine board has been in my garage for many, many years. This is just how they came together.

10-1/4" W x 10-1/4" H x 5-1/4" D

Pine box with Madrona Burl,  
Fancy Quilted Maple,  
Birdseye Maple, Tiger Maple,  
Fancy Walnut Burl,  
and Purple Heart.  
Polyurethane  
Not for sale



## CHUCK PITSCHA

12425 Pioneer Rd., Minnetonka, MN 55343 ~ 952-935-0660 ~ [electricwood@comcast.net](mailto:electricwood@comcast.net)

Woodworking has always kept me totally occupied and enjoying the challenges of a project, but really the beauty of the wood, when it is finished, is what I long to see and want others to see, too. While I am mostly self taught, I have attended many woodworking seminars and watched many demonstrations from the likes of David Marks and David Ellsworth, to name just a few. As a member of Minnesota Woodworkers Guild and the American Association of Woodturners, one benefits from being a part of these great organizations.

### NO. 741 BLACK CHERRY ROCKER

The rocking chair consists of eighteen mortise and tenon joints, eight of them are pinned using redheart dowels. Eighty four wooden blocks along with a serpentine of fifty feet of 10.5mm Mammoth climbing rope, held by two redheart fasteners on the ends, is enough to support, comfortably, your entire weight. The blocks adjust to your body shape nicely and are kept from touching the frame of the chair by 28 little redheart rings. Cherry burl disc's are inlaid and overlapped on the back rail to give the chair a unique character (and to enhance it a tad).

22" W x 32" L x 42" H

Cherry, Redheart

Oil and Wax

\$1450



**CHUCK PITSCHA**

**NO. 742 FIVE-LEGGED MAPLE VESSEL**

This hard maple vessel shows the sharp contrast between heartwood and the light colored sapwood. Oil finish brings the natural color to your attention. Five short legs, turned from cherry burl, elevate the piece just enough to give you a glimpse of the bottom.

3-1/2" Dia x 5-3/4" H  
Maple and Cherry  
Oil and Wax  
\$385





## AL POKORNY

15699 Hampshire Ave., Prior Lake, MN 55372 ~ 952-412-1241 ~ [acpoko@integra.net](mailto:acpoko@integra.net)

Al is an Air Traffic Controller and father of two boys, who enjoys woodworking as a stress reliever and creative outlet. Though he has been a woodworker for more than 10 years, his intensity has increased in the last four after he began taking classes at the Mark Adams School of Woodworking. Al is working to complete his Masters degree. While he enjoys all aspects of furniture building, lately he has been concentrating on veneer and marquetry work. He enjoys the creative options they bring to the final product.

### NO. 743 CATHY'S TEA TABLE

This table was designed and built as a Christmas gift for my wife. It combines several interesting techniques which caused the project to be as interesting and challenging to build as it is to look at. Both the upper and lower table tops are 12-way radial matched, on both the tops and bottoms. The apron is a continuous bentwood lamination. The curved legs taper in both directions.

22" Dia. x 24" H

Cherry solids, Wenge inlays, Veneers are Crotch Walnut, Cherry, Maple and Ebony  
Shellac and Wax

Not for sale



## THOMAS PRONDZINSKI ~ TOM'S WOODCRAFT

105 South Main Street, Medford, MN 55049 ~ 507-455-0875 ~ [thomasprodzinski609@msn.com](mailto:thomasprodzinski609@msn.com)

Tom is a self taught woodworker, other than shop class in high school. In 1996 he started Tom's Woodcraft, building commissioned furniture for various clients using different materials. Having built many pieces of Mission furniture, Tom likes the look of quartersawn white oak, and the simple lines and hefty construction of Mission furniture. Tom later turned his emphasis to design and construction of custom furniture using domestic and exotic solid woods and veneers. He is now turning to bentwood laminations and trying to push the limits of the materials.

### NO. 744 COFFEE TABLE

Inspired by the David Marks seminar and seeing the possibilities of wood bending, I determined that anything was possible if you just try. I now pose the following questions to myself: "What could I do next?" and "Is it possible?" This table was designed to be unique. The legs are walnut laminations, bent on a form one leg at a time, then hand scraped and sanded. The stretcher features hand cut dovetails. The underside of the table was hand shaped to give it a light, weightless look.

55" L x 23" W x 17-1/4" H  
Curly Maple and Black Walnut  
Lacquer  
Please inquire for price

## CECILIA SCHILLER

1714 Ashland Ave., St. Paul, MN 55104 ~ 651-917-6493 ~ Cecilia@bitstream.net

Cecilia Schiller spent several years mastering the art of traditional European relief woodcarving before traveling to Bali, Indonesia, where she studied Balinese sculptural carving in 2000. She now combines these two methods in her original works. She has been a professional artist for over twenty years, and has created puppets, masks, and props for theaters in Minneapolis and New York. She has also produced decorative utilitarian items such as shelves, fireplace mantels, and benches.

### NO. 745 MUSIC STAND

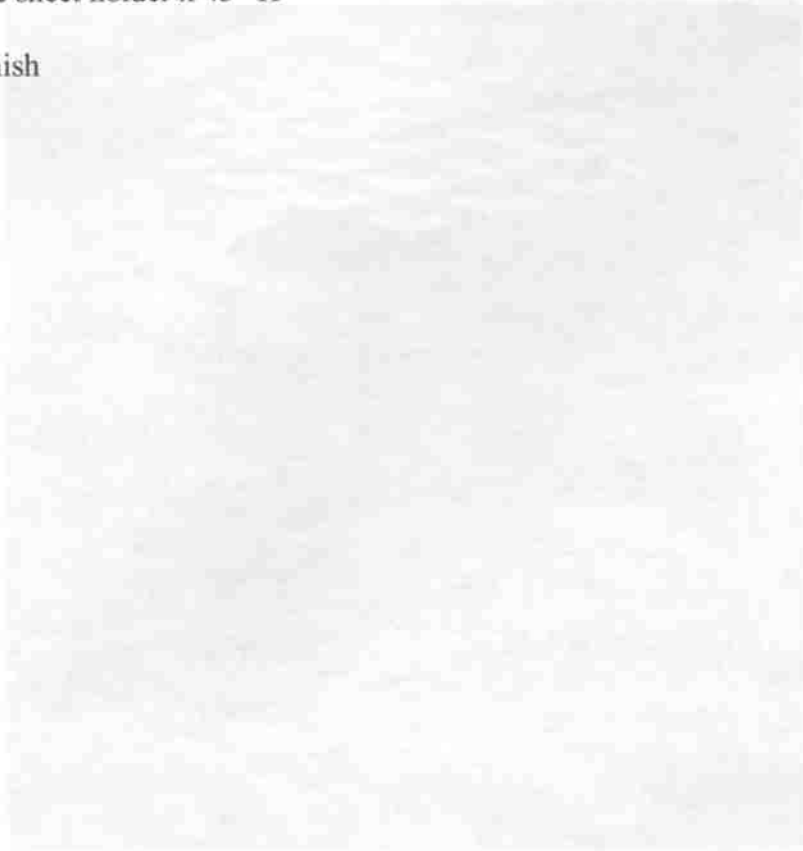
I designed this music stand as a high school graduation gift for my daughter. She plans to study music therapy in college. The birds symbolize the melodic sounds of her flute. The stand is made entirely of walnut, with hand carving throughout.

20" across the sheet holder x 45" H

Walnut

Wipe-on Varnish

Not for sale



**DICK SCHULTZ**

4235 Grimes Ave. S, Edina, MN 55416 ~ 952-927-6207 ~ richard\_schultz\_5@msm.com

Dick has concentrated on doing woodworking since his retirement in 2002. He really enjoys doing and learning a variety of woodworking techniques such as carving and marquetry. He has replicated several types of furniture design and is slowly developing his own style.

**NO. 746 FLOWERING DOGWOOD SERVING TRAY AND STAND**

This piece presented an opportunity for expanding my design skills and exploring a variety of woods within the medium of marquetry.

19" L x 13" W x 24" H

Birdseye Maple, Bubinga, Holly, Yellowheart, Jutoba and Poplar

Oil and Wax

Please inquire for price

**PETER SCHULZETENBERG ~ JPS WOODWORKING**

*48 Penn Ave. S, Minneapolis, MN 55405 ~ 612-384-5871 ~ peter@jpswoodworking.com*

I have been woodworking for about 10 years now, and run a small business making a wide range of wooden pieces; from an artistically turned bowl to a large dining table, and everything in between. I try to use domestic wood where possible, and accent or contrast them with the use of exotic veneers.

**NO. 747 ROUND MARQUETRY TABLE**

This piece was inspired by classic parquet floor pattern. I laid up the veneer field using maple, makore, mahogany, and walnut veneers. After it was complete, I designed the rest of the table "on the fly" and used some nice thick cherry stock that I had on hand to complete it.

25" Dia x 28" H  
Cherry, Maple, Makore, Mahogany and Walnut  
Oil and Wax



## TOM SHRUNK

3108 32<sup>nd</sup> Ave. NE, Minneapolis, MN 55418 ~ 612-419-4124 ~ [www.thomasschrunk.com](http://www.thomasschrunk.com)

Tom Schrunk, is a self-employed artist who describes himself as "an artist in lustrous materials". Though he is best know as a wood artist, he has worked professionally as an archaeological photographer, a glass artist, and done work in brushed metals, including a major piece of the Minneapolis Red Cross and recently a stainless steel obelisk for a master gardener. He has written articles in a number of magazines including "Fine Woodworking" and has taught wood veneering at MCAD and at local galleries. He has had the good fortune to have done three custom Art Case pianos for Steinway & Sons, and some of his work was seen nationally on "Good Morning America" in January, 2006.

### NO. 748 CHESS TABLE

The game board has 2" squares, plus an ample boarder for captures. The outer boarder has straight bookmatching in the centers with bookmatched miters at the corners. The underside of the game board has a surprise. Solid Walnut edging and legs.

24" L x 24" W x 28" H

Walnut. Veneers are: Walnut burl and Birdseye Maple

Polyurethane

\$990



## STEVE TOMASHEK

433 E. Main St. #3, Anoka, MN 55303 ~ 612-990-6114 ~ [stomashek@earthlink.net](mailto:stomashek@earthlink.net)

Steve has been carving and painting miniatures since he was a child and took it up as a full time profession in 1996. His work is the product of many years of careful study of natural world and animistic art. His art is based on a rediscovery of the aesthetic power of sculptures small enough to be held between the thumb and forefinger, a tradition that extends back to the earliest sculptures of humanity.

### NO. 751 Carved Cheetah

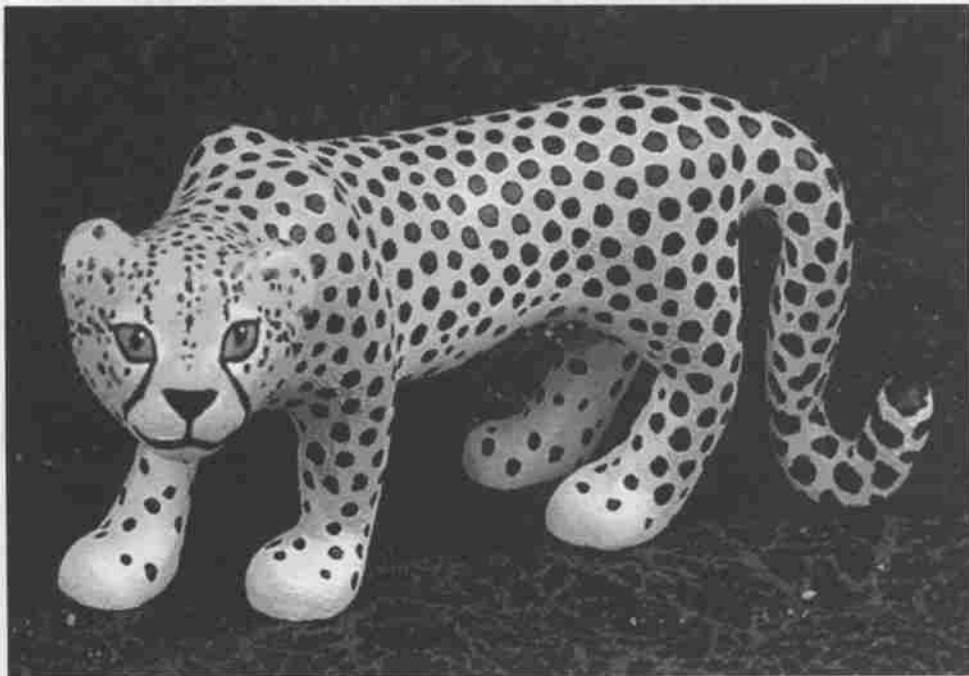
This piece is meticulously carved and painted using the most basic hand tools: whittled out of one small chunk of basswood using professional detail knives; then sanded, filed and painted.

3/4" W x 2" L x 1" H

Basswood

Acrylic paint

Please inquire for price



## JOHN WEBSTER

1191 Lafayette Ave., Lafayette, MN 56054 ~ 507-228-8694 ~ [ckwjmw@hotmail.com](mailto:ckwjmw@hotmail.com)

A full time construction equipment operator (Local 49), John has enjoyed a woodworking avocation for over twenty years. Coming from a long line of Swedish carpenters, John was able to use his uncle's woodshop to begin learning the art of fine woodworking. In his own shop, John now designs and builds furniture for his family. In the past few years, he has become a bowl turning fanatic, using logs from his great-grandfather's twenty-five acre woodlot, to turn bowls of hickory, elm, basswood, cherry, and box elder; no two bowls alike. He believes that one is never bored when there is something to build.

### NO. 752 BLANKET CHEST

Traditional blanket chest in cherry and silver maple with hand cut joinery and an oil and wax finish. A modern lid closer was added for safety.

18" D x 30" W x 22" H  
Cherry and Silver Maple  
Oil and Wax  
Not for sale





## CHUCK WHITCOMB ~ GRASSROOTS

1129 Root River St. SW, Chatfield, MN 55923 ~ 507-867-3776 ~ [grassroo@rconnect.com](mailto:grassroo@rconnect.com)

Chuck entered the woodworking business in 1974 when he began building hammered dulcimers. Since then, his instruments have been purchased by customers both here in the US and in a number of other countries. When not playing music or building hammered dulcimers, Chuck builds custom furniture pieces and cabinetry.

### NO. 754 AT THE END TABLE

Like our lives in general, the culmination of this project is a very different from what I envisioned at its conception. My vision was of a round table, divided into wedges. I abandoned the round shape but kept the wedges and the edge banding. The graceful curve of the legs and the detailing defies the viewer to see this as just another square end table.

19" L x 19" W x 24" H

Cherry, Wenge details, Patinated Brass and Actel.

Lacquer

Please inquire for price

