

Thirtieth Annual

\$1.00

Northern Woods

An Exhibition of Fine Woodworking



Photo by Ramon Moreno

Cabinet in Chinese Elm by Nicholas Nelson

2012 Best in Show



*Eden Prairie Center
Eden Prairie, Minnesota
25 - 28 April 2013
Minnesota Woodworkers Guild
www.mnwwg.org*



Online
Bookstore
awbookstore.com

YOUR BEST SOURCE FOR LEARNING NEW SKILLS!



Many more titles and plans available at
awbookstore.com or
1-800-876-1822

American
Woodworker
MAGAZINE

Table of Contents

Welcome	4
Award Descriptions	7
Judges' Biographies	8
Entries	10
Exhibitors' Index	74

Eden Prairie Center

An American Original - A Minnesota Tradition

Eden Prairie Center is pleased to host the thirtieth annual edition of The Minnesota Woodworker's Guild Northern Woods Exhibition of Fine Woodworking. We anticipate many positive responses from our customers who appreciate the arts, and we have found our work pleasantly surprises newcomers to the exhibit who are shopping at Eden Prairie Center. It's easy to get caught up in the amazing craftsmanship and forget what you came for!

This show displays the high level of artistic talent the Minnesota Woodworkers' Guild represents. The pieces in the show are made by hard-working, dedicated artisans who appreciate the traditional skills required to work with wood. There are many factors involved in the creation of the pieces on display, and each one is unique to it's own creator's personality and interpretation. We hope you will appreciate this effort as you view and admire the works of art. Your most outstanding impression will undoubtedly be that of the quality of workmanship and design which you see through the show.

We thank the Minnesota Woodworkers' Guild for choosing Eden Prairie Center as the site for this exhibition and wish its members the best of shows and much future success.

General Manager

Welcome to the Northern Woods Exhibition

The Northern Woods Exhibition is an annual woodworking show and competition sponsored by the Minnesota Woodworkers' Guild and hosted by the Eden Prairie Center. The show provides an opportunity for woodworkers to display and discuss their craft, and for the community to view the best in high quality woodworking design and construction. The pieces on display are works of art in addition to being functional furniture.

Education is one of the main goals of the Minnesota Woodworkers' Guild. Many of the pieces in this show reflect skills learned at monthly meetings, workshops and seminars sponsored by the guild. If you are a woodworker who wants to learn new techniques and meet with others who are willing to share their knowledge, please be our guest at a meeting and consider becoming a member.

Enjoy the show!

Jerry Beutel
President
Minnesota Woodworker's Guild

Northern Woods Committee

The Northern Woods Exhibition Committee is composed of several guild members who volunteer their time, energy and expertise to organize this show. They meet each month from December until the show starts. They each receive an assignment or two to make arrangements to make the show a success. This years committee members are:

Jeff Anderson	~ Co-Chairman
Fran Peterson	~ Co-Chairman, Judges
Richard Tendick	~ Co-Chairman, Posters and Sponsors
Angie Kopacek	~ Master of Ceremonies
Charlie Kocourek	~ Booth Schedule and Banquet
Tony Kubalak	~ Show Catalog, Post Show Recognition
Rutager West	~ Award Trophies
Joe Santos	~ Award Trophies
Lonnie Bryan	~ Sponsors
Mark Powell	~ Publicity
Jon Perko	~ Photography
Ed Neu	~ Promotions

If you have suggestions or comments about the show or would like to help with next year's show, please contact one of the above committee members. To view additional pieces of work from past years of Northern Woods as well as our members' gallery, please visit our web site at www.mnwwg.org

Judging

All entries will be judged in a pool rather than in separate categories for each form of furniture. The judging categories are designed to reward woodworkers who are good at creating new ideas or interpreting older ones as well as those woodworkers who are skilled with machines and hand tools. The judges will score how well they liked each piece and how well it was made. Additionally, judges will offer constructive verbal comments on a voice recorder.

The judging categories have been designed to encourage you to enter a piece regardless of your status as a woodworker. It is more than a competition for prizes. The show is meant to be a display of the state of the art of woodworking in Minnesota and a chance for guild members to see what their peers have been up to in the last year. You may decide to enter a piece but not have it judged.

Each piece is eligible to receive only one award from the judges. These awards are listed on the facing page. All pieces are still eligible for the Peer Award, the People's Choice Award and the Paul Lee Award.

Additional Award

In addition to the regular awards, the Minnesota Woodworkers' Guild is pleased to announce one additional award. This award is dedicated to the memory of a person special to guild members.

Paul Lee Award

This award honors the work of the late Paul Lee, one of Minnesota's most extraordinary woodworkers. Paul learned the basics of traditional craftsmanship at Boston's North Bennet Street School and was a long time member of the Fourth Street Guild, here in Minneapolis. His work ranged from Queen Anne chairs and desks to whimsical jewelry boxes inspired by local grain elevators and turn-of-the-century brick warehouses. The award will be given to the best entry that has a playful spirit and sound construction.



Award Categories

BEST IN SHOW

The winning piece should exhibit the best qualities of most of the following categories. Sponsored by *Youngblood Lumber*.

BEST ORIGINAL DESIGN

A well-designed piece must be both useful and pleasing to the eye. Will it perform its intended job? Good design is in large part a subjective opinion. It is difficult to define what good design should look like, but we can agree how it should affect a thoughtful critic. It invites a second, more intimate look, and asks to be touched by hand and spirit. This award is to be presented to the best design, one that is not a copy of a previously designed piece, i.e., an original design or a unique adaptation of a design style. Sponsored by *American Woodworker Magazine*

BEST TRADITIONAL PIECE

This is an award for the piece which is built in the traditional manner, a reproduction or a piece heavily influenced by a traditional design. Sponsored by the *Society of American Period Furniture Makers*.

BEST DETAIL

The finest craftsmanship is often just a small part of a piece but makes all the difference. This award goes to the best conceived and/or most deftly executed detail that really makes the piece stand out. This might be an exceptional set of dovetails, an expertly carved detail or an exquisite inlay. Sponsored by *ACME Tools*.

BEST HANDWORK

The use of hand tools carries a long and rich tradition in woodworking. Successful handwork should not be judged by machine standards. It produces surfaces and shapes that are more varied and personal, free from the limitations imposed by machines. Pieces submitted for consideration in this category must have all surfaces finished with hand tools and all joints hand cut. A description of handwork involved must be submitted for use by the judges. Sponsored by *Mike Siemsen's School of Woodworking*.

BEST FINISH

The finish may enhance the natural beauty of wood or alter its texture and color. A good finish elevates one's perception of the piece to which it is applied. Depth, luster, and clarity are characteristics of a good finish. Sponsored by *Woodworker's Journal*.

BEST CARVING

This prize is awarded to the piece with the best use and execution of carving. It is differentiated from the Best Handwork award in that the carving is a major element of the piece. Sponsored by *Lee Valley Tools*.

BEST TURNING

This award honours the tradition of turning. This winning piece will exhibit quality of form as well as execution. Sponsored by *AAW and MN Woodturners Association*.

BEST FIRST TIME IN SHOW

Whether professional or amateur this award goes to the best piece entered by a first time Northern Woods exhibitor. Sponsored by *Mark Laub Studios*.

MOST TECHNICALLY ACCOMPLISHED

This is an objective assessment. The best work will exhibit a mastery of many woodworking techniques. It will respect the limitations of working in wood. Qualities to look for include flawless treatment of surfaces, precise joinery and carefully controlled detail. The award will take into account the difficulty of the undertaking. Sponsored by *Woodcraft*.

WOODWORKING FOR PLEASURE

This prize is awarded to the best piece exhibited by a person for whom woodworking is an avocation. Sponsored by *American Woodworker Magazine*.

JUDGES' AWARD

Sometimes a piece worthy of recognition doesn't fall into any of the award categories. It may have something special about it that is hard to define, or the judges may choose, at their own discretion, to fit any piece into this category. They may also use this award for recognizing a piece that ran a close second to one of the other category winners. Sponsored by *Rockler Woodworking*.

PEER AWARD

This is decided by balloting among all Guild members coming to the show. You will be given a chance to vote for your favorite piece (other than your own) and runners up. Sponsored by *Lee Valley Tools*.

THE PEOPLE'S CHOICE

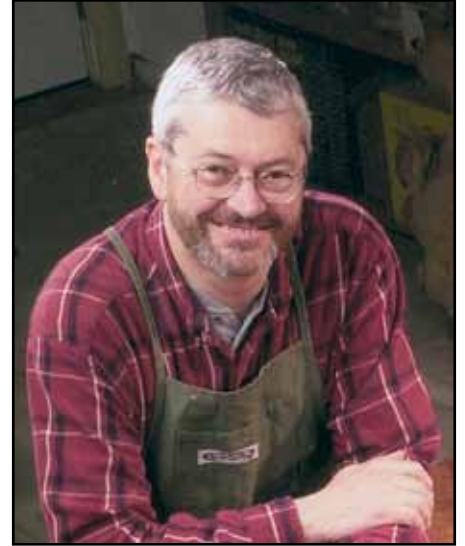
This award is determined by ballots submitted by the public. It recognizes those people's favourite piece in the show. Sponsored by *Forest Products Supply*.

Note that all categories are awarded at the judges' discretion. If they do not feel any one piece meets the winning criteria of a category, that category's award will not be given.

2013 Judges

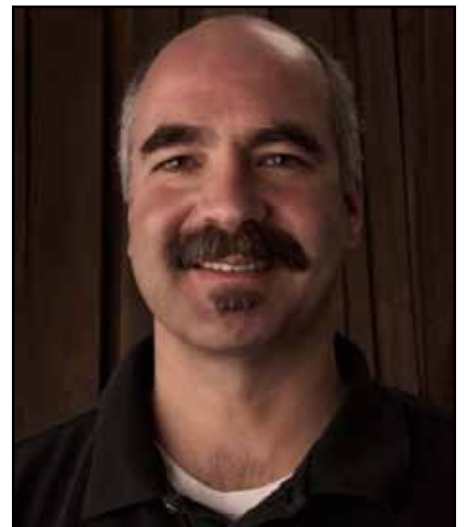
David Munkittrick

David began making furniture and cabinets in 1983 in a cooperative shop along with four other woodworkers. That collaboration led to the Fourth Street Guild where he worked for a couple years before moving to River Falls in 1986. In 1999, he joined the staff at American Woodworker Magazine where he worked as an Associate Editor for nine years. In 2008 he left the magazine and returned to his furniture making roots. He remains active as a freelance writer for The Family Handyman, Woodcraft, Woodworkers Journal, American Woodworker and Woodworkers Guild Of America. David is one of the original members of Xylos Gallery in Minneapolis where his work is currently on display.



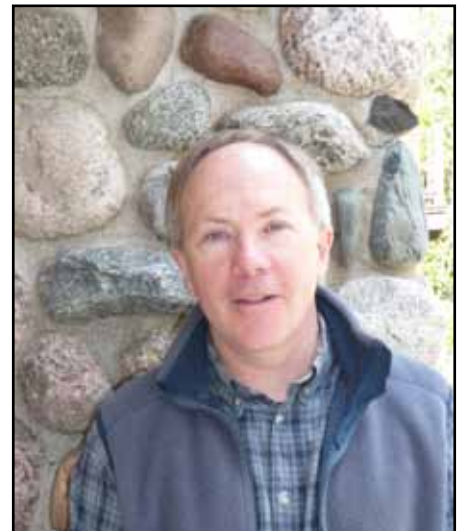
Willie Willette

Willie Willette was born and raised in a large family in Olivia MN, before graduating from St. Johns with a degree in English with a concentration in Philosophy, guaranteeing that he would work with his hands for the rest of his life. After years of construction, travel, and Museum work, Willie established Willie Willette Works in 1996, a design/build studio for custom, one of kind furniture. For the past 5 years, Willie has worked as an adjunct professor at Minneapolis College of Art and Design (MCAD).



Jon Frost

Jon, a professional woodworker for thirty-four years, started Frost Cabinets Furniture and Design in 1983. Now employing nine highly skilled cabinetmakers, his shop designs, builds, and installs a wide range of fine cabinetry, furniture, and architectural millwork. Jon participated in the first ten Northern Woods exhibits and is a past board member of the Minnesota Woodworkers Guild.



SAPFM

We are a non-profit organization whose mission includes providing a forum for the understanding and appreciation of American period furniture, its history, and related materials and techniques. Our members include professional full-time cabinet-makers, serious amateurs, conservators, historians, and educators.

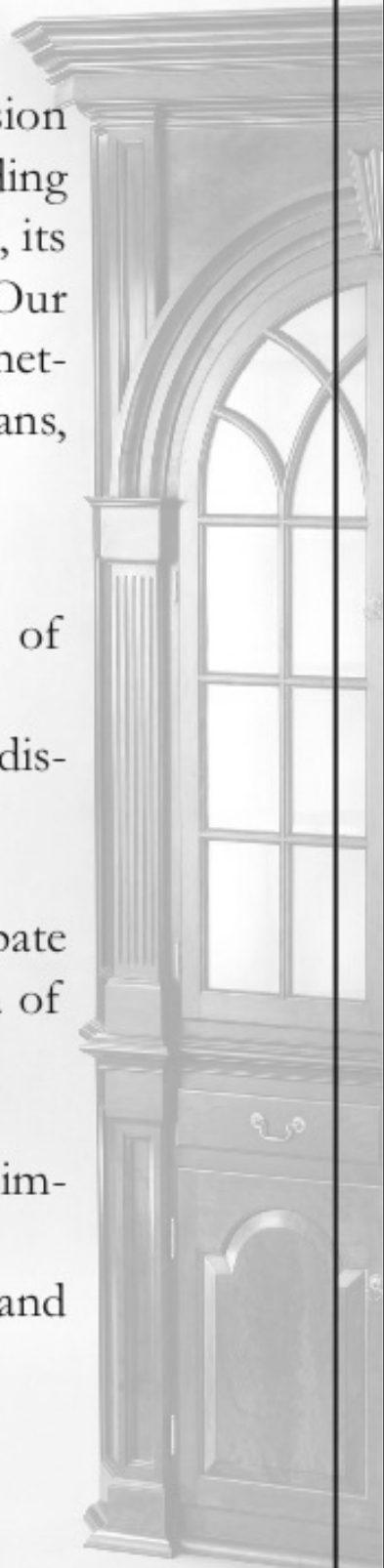
Members of SAPFM enjoy:

- *American Period Furniture*, the annual journal of SAPFM
- an online gallery where member work is displayed
- our quarterly newsletter, *Period Furniture*
- an online forum to post questions and participate in discussions and access to the Member Area of the SAPFM website
- participation in regional chapter events
- opportunities to network with others having similar interests
- eligibility to register for SAPFM conferences and exhibitions.

Learn more about
SAPFM and become
a member today at
www.sapfm.org!



*Society of American
Period Furniture Makers*



No. 1301

David A. Lane
4648 Aldrich Ave South
Minneapolis, MN 55419
(612) 822-6362
(952) 847-5982
lanemnwg@yahoo.com

I am a librarian who enjoys woodworking and books. I have been woodworking as a hobbyist for 22 years and a librarian for 33 years. I woodwork in a small basement shop, mostly with hand tools. When I need machinery I sign up for Edina Community Education's Open Woodshop.

Billy Pilgrim's War Chest

This project, based on the novel "Slaughterhouse Five" by Kurt Vonnegut, is a blend of woodwork, art and literature. Upon opening the chest you first encounter a diorama by artist James Morgan depicting Vonnegut's firebombed Dresden. Below, in the drawer, a second scene describing the reality of war. Finally, from within a hidden compartment below the drawer, a book box containing the novel, a Dresden china plate, dog tags, and the shell casings from bullets used to create the diorama's bomb craters. I enjoy the similarity between a book and a box: both have content within a cover/lid and present a sense of anticipation and discovery.

Attribution:

Concept, design, all woodwork including the drawer and its content and the book box: David Lane

Diorama and mural: James Morgan, Minneapolis.

1:72 hand-painted figures: Rene Betgem, The Netherlands.



Technical Details:

Materials: Hickory, cherry, walnut, painted maple, mirror, modeling supplies and figurines, brass hardware (some home made).

Finish: Water-based dye; oil-polyurethane mix and wax.

Dimensions: 23" (w) x 13" (h) x 14" (d)

Price: Not for sale.

No. 1302

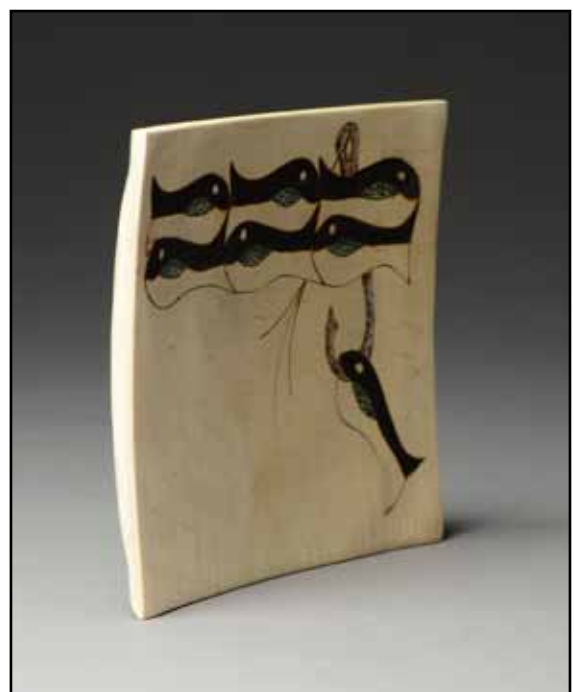
Linda Ferber
1518 Wellington Way
Eagan, MN 55122
(651) 497-6485
linda@garber.org

Linda Ferber has been woodturning for more than ten years and enjoys the creative possibilities and personal challenges it provides. She purchased her lathe from an auction of her father's woodworking equipment, thinking it was the one machine she could use. With no previous experience, she took a bowl-turning class and joined the local AAW chapter. That impulse purchase has had a significant impact on her life.

Destination

This piece is a square turned platter, with woodburning, dye and prisma colors.

Whether minnow or whale, the school provides the leadership to follow the current safely and securely to it's destination. But venturing away from the guidance of trusted leaders and the flow of the current, may lead to being hooked by something other than it appears.



Technical Details:

Materials: Maple, dye, prisma colors.

Finish: Woodturners finish.

Dimensions: 6" (w) x 3/4" (h) x 6" (d)

Price: Not For Sale

No. 1303

R

Richard Tendick
17760 Jaguar Path
Lakeville, MN 55044-9674
(952) 435-6011
rctendick@hotmail.com

I started woodworking in my father's shop, took woodworking in high school and graduated from college with a degree in Industrial Education. After teaching woodworking and drafting for two years, I worked as an engineer for a paper converting company for 27 years. While working as an engineer, I was making patterns for cast iron machine parts to keep old machines working, building furniture and carving. After retirement, I worked as a contractor for several years. I am currently writing articles for a leading woodworking magazine.

Pear Shaped Salt Boxes

Because sea salt comes as a flake and cannot be placed in a salt shaker, my daughter wanted salt boxes for both sea salt and pepper. I designed these boxes as both a salt box and a piece of art to decorate her table. The upper half of the box is indexed to the bottom by a small ridge in the wood so that the two halves will always match up. The two halves are hinged together with a brass pin. The stem is made from a steel rod. The finish is artist's oil paint and, after the oil paint dried, several coats of lacquer.



Technical Details:

Materials: Maple, brass and steel.

Finish: Oil paints and lacquer.

Dimensions: 5" (w) x 7" (h) x 5" (d)

Price: Not For Sale

No. 1304

Basket Weave Vase

R

Richard Tendick
17760 Jaguar Path
Lakeville, MN 55044-9674
(952) 435-6011
rctendick@hotmail.com

While visiting a museum, I noticed a basket weave carving. Wanting to try my hand at this type of carving, I designed this vase. The vase was turned on the lathe and, while still mounted between centers, I carved the basket weave pattern. After the carving was completed, I used a wood burner to emphasize the carved pattern.



Technical Details:

Materials: Yellow poplar and rosewood

Finish: Oil

Dimensions: 6" (w) x 9" (h) x 6" (d)

Price: Not For Sale

No. 1305

Charles Pitschka
12425 Pioneer Rd
Minnetonka, MN 55343-8769
(952) 935-0660
eclecticWood@comcast.net

I began woodworking early, preteen. Both my grandfathers were craftsmen, one was a blacksmith, the other was a carshop foreman.

Cherry Bowl With Picture Frame Rim

This Cherry bowl features a “picture frame rim”, the tree had a huge burl at the base and it was such a joy to turn, very unusual grain pattern!



Technical Details:

Materials: Cherry

Finish: Shellac/wax.

Dimensions: 12 1/2” (dia) x 4” (h)

Price: \$450

No. 1306

Charles Pitschka
12425 Pioneer Rd
Minnetonka, MN 55343-8769
(952) 935-0660
eclecticWood@comcast.net

Bowl

Cherry is one of most beautiful woods in Minnesota, this piece came from a tree in Minnetonka that had to be removed because it was diseased. I tried to shape it on the lathe so that the opening from decay would be particularly noticeable. The piece would be great for a table centerpiece!



Technical Details:

Materials: Cherry

Finish: Shellac/wax.

Dimensions: 10 3/4" (dia) x 2 1/2" (h)

Price: \$400

No. 1307

Ed Neu
7344 27th St. SE
Buffalo, MN 55313
(763) 477-5027
(612) 840-6732
eneu3@sprintmail.com

I've been working with wood since I was a kid. In recent years, I've become an avid designer and builder of custom furniture and decorative items that come in many shapes and sizes, and fulfill many purposes. Each project causes me to stretch further and further into the wonderful world of woodworking. Each year I look forward to exhibiting here with these fine artisans at the Northern Woods Exhibition, where I can share my love of native hardwoods and the craft that turns them into things of beauty and utility.

Arts & Crafts Inspired Bedside Table

This table exhibits all the elements common to Arts & Crafts pieces, but departs from the oak tradition, and is done in cherry and maple instead, with walnut and carved accents. It is built using traditional mortise and tenon, frame and panel construction, with dovetailed drawers gliding on wood guides.

It was designed as a custom piece to match a bed I designed and built a number of years ago, and to fit in a specific location. Its simple rectilinear lines, with gently curved lower rails, are complemented by the simple geometric carved details on each leg, and the high-contrast walnut inlay on the top.

While designed as a bedside table, it can be used as an occasional table. It is finished on all sides so it can be displayed in the center of any room.



Technical Details:

Materials: Cherry & maple with walnut inlay.

Finish: Waterborne polyacrylic over oil stain

Dimensions: 23" (w) x 27" (h) x 17" (d)

Price: \$1500

No. 1308

Mark Laub
Mark Laub Studios
3750 211th Ln NW
Oak Grove, MN 55303-8851
(612) 210-7793
marklaubstudios@gmail.com

Skip The Light Fandango

This nine door walkabout cabinet was inspired by the Trillium flower and celebrates the magical renewal we all experience each spring. It offers interest and surprise from all directions. The trillium shape appears throughout the cabinet, its shelving, stretchers and base. Interior inlays feature trillium flowers, butterflies, grasshoppers and dragonflies. The petal shaped top opens to provide access to the shallow upper space and the lower doors provide access to the main cabinet from all directions. Patinated copper lines the cabinet interior and cyma curved doors provide a visible copper ribbon which appears to extend to the floor on each leg post. The numerous piercings are complemented by an art glass conservatory dome. A live plant (or is it heat treated brass?) helps the imaginary forest within “Skip The Light Fandango”



Mark Laub designs and builds functional art furniture. His work is nationally known for its fluid, nature inspired design and is currently on display in galleries in Minneapolis and San Francisco. He was part of the team that created the 2009 Art Case piano for Steinway and Sons. Laub also enjoys music and an “occasional” bottle of wine. These days he spends a lot of time saving up for the things money can’t buy.

Technical Details:

Materials: Figured Koa, blistered bigleaf maple, patinated copper, art glass, ebony, mother of pearl, abalone, sterling silver and jasper.

Finish: Koa: oil/wax. Maple: shellac/wax

Dimensions: 36” (w) x 48” (h) x 36” (d)

Price: Please inquire.

No. 1309

Jerry Beutel
3485 Trading Post Tr
Afton, MN 55001
(651) 436-5897
jebeutel@gmail.com

My woodworking started with that rusty saw and broken hammer I found in the basement as a kid. It was years before I made anything but sawdust and scraps, and some days that is still all that I end up with! Retirement has afforded me the opportunity to put more time into woodworking, which I enjoy thoroughly. Involvement with the Minnesota Woodworkers Guild and the Northern Woods Show has been very helpful in my woodworking education.

Dining Room Table

This dining table is designed for the not-so-big house. It will comfortably seat four to six people. Built of heavy stock, the weight of it is softened by gentle curves on the legs and the top. On the edge of the table top a curve intersects a bevel to add interest and to lighten the visual weight of the piece. Several ebony accents add contrast to the cherry, though cherry is certainly a beautiful wood on its own. After the Northern Woods show this table is destined for two special people in Alaska, consequently it is designed for easy disassembly and flat packing. Simply unscrew six screws holding the legs to the table top, tap loose the “tusks” from the tenons and the pieces will lay flat for shipping.

Technical Details:

Materials: Cherry and ebony.

Finish: Hand rubbed varnish

Dimensions: 60” (w) x 30” (h) x 30” (d)

Price: Not For Sale

No. 1310

Greg Wood
PO Box 186
Howard Lake, MN 55349
gregwoodfurniture@hotmail.com

Furniture designer and builder, Greg Wood, is passionate about furniture design and woodworking. Since Greg's career began over 20 years ago, he has become known for his natural edge, organic and eco-friendly furniture, commissioned residential furnishings and unique one-of-a-kind pieces designed expressly for the client's specific needs.

Cherry Rocker

My objective was to design a rocker with arts and craft flair and a modern footprint, meaning a low profile. This led me to the cantilevered seat design. The cantilevered seat was an engineering challenge which allowed me to develop the negative spaces surrounding the seat area. I highlighted the negative space with walnut accents to add intrigue. The reason that I chose to break up the seat in to two halves was to lighten the overall look and also add visual interest. I chose to use euro-beech for the side assemblies because of its structural qualities and the plain grain figure which would contrast well with the cherry seat. The simple edge treatments on the cherry seat reduce the overall scale of the rocker and heighten the contrast with the carved seat and back.

Technical Details:

Materials: Euro-beech, cherry, walnut

Finish: Sam Maloof

Dimensions: 21" (w) x 34" (h) x 36" (d)

Price: \$1900.00



No. 1311

Joel Ficke
15384 125th St
Bloomer, WI 54724
(715) 568-4111
jficke@bloomer.net
www.JoelFicke.com

Joel specializes in faithful reproductions of the finest early American examples from Queen Anne and Chippendale periods and loves the life-long learning challenges these projects present. He uses authentic tools, materials and methods and recently has begun to explore creating patinated finishes.

c. 1760 Newport Tea Table

This is a reproduction of a 1760's tea table attributed to John Goddard of Newport, RI. Notable features include feet with uniquely sculpted talons and pierced claws, intaglio style knee carving, and sculpted aprons and table top. The finish is carefully layered to show age and lightly distressed to present a well-cared for "antique". All shaping, carving and finishing is done by hand.



Technical Details:

Materials: Mahogany

Finish: Shellac

Dimensions: 34" (w) x 26 3/4" (h) x 21" (d)

Price: Please Inquire

No. 1312

Nicholas Nelson
7468 Shenandoah Ln N
Maple Grove, MN 55311
nicholas@nanelson.com

Ever changing are the seasons of Minnesota. Wind, rain, snow, and shine, shavings find the floor of my small shop. Starting as a drum maker I desired to learn more. Thus, I attended the cabinetmaking program of MCTC moving on to the Inside Passage School of Fine Cabinetmaking to study with Robert Van Norman and learn from James Krenov. Returning with deeper insight into the tools and materials of the craft, I have set up shop with the hopes of making thoughtful, sensitive things both functional and beautiful through time.

Vanity Cabinet

A minimal version of a vanity made perhaps for a small but loved collection of jewelry. Pear wood can be a very sensual material. Extremely fine grained it is soft and soothing to the touch. When steamed, in this case, turns pink with subtle variation in hue and saturation. The natural elegance of the wood influenced my choices to come to a form to showcase its beauty.



Technical Details:

Materials: Swiss Pear, Maple, Jatoba

Finish: Shellac & Wax

Dimensions: 18" (w) x 24" (h) x 8" (d)

Price: \$2400



No. 1313

Mike Siemsen
Green Lake Clock Company
9912 Green Lake Trail
Chisago City, MN 55013-7460
(651) 257-9166
mike@schoolofwood.com

A life long woodworker, Mike operates Green Lake Clock Company and Mike Siemsen's School of Woodworking. He is the Minnesota Chapter coordinator for the Society of American Period Furniture Makers. He enjoys making his own tools, researching period techniques and using hand tools to make furniture.

Aaron Willard Tall Case Clock

This is a fairly accurate reproduction of a 1799 Tall Case Clock built in Roxbury, Massachusetts by Aaron Willard. The original case has the instructions glued to the inside of the waist door, they were printed by Paul Revere. The clock was purchased by Revolutionary War Major John Davidson of North Carolina. The small glass in the sides of the hood are from his plantation house. The moldings are all made with hand planes. The case is hand planed or scraped. Portions of the case are hammer veneered. I modified the movement to operate a moon dial and made the tin can weight shells. It is one of five.



Technical Details:

Materials: Mahogany primary wood and veneers, White Pine secondary wood

Finish: 2 coats of shellac, 1 coat of lacquer

Dimensions: 20" (w) x 100" (h) x 10" (d)

Price: Not For Sale. I do custom work, please inquire.

No. 1314

Mike Siensen
9912 Green Lake Trail
Chisago City, MN 55013-7460
(651) 257-9166
mike@schoolofwood.com

Sea Chest

I was interested in sea chests and their construction. I studied photos of many chests before making this one. I find it difficult to believe that men went to sea for years with everything they owned in a box this big. The truncated chest makes for interesting dovetailing. I fitted out the insides for use as a tool chest. Other than power planing the rough stock this chest is made entirely by hand and is currently in use, hence the scratches and dings.



Technical Details:

Materials: White Pine

Finish: Paint

Dimensions: 36" (w) x 16" (h) x 17 1/2" (d)

Price: Not For Sale. I do custom work, please inquire.

No. 1315

Jason Holtz
558 Vandalia
Suite 205
St Paul, MN 55114
(612) 432-2765
jason@jholtz.com

I began pursuing my interest in furniture design and construction while studying pre-architecture at the University of Minnesota. After spending three years with chair maker Jeff Miller in Chicago, I went to work at high-end furniture shops doing both production and custom work. At the same time, I was building a client base doing custom furniture in my own shop. I have been building custom furniture professionally since 1998. My work has been exhibited in juried shows with the Chicago Furniture Designers Association, the Bloomington Art Center, the Minnesota Woodworkers Guild. I am a part of Xylos Gallery in Minneapolis.

Anna Rocker Prototype

Anna was commissioned for a mother and first born by her husband. The design was Mid Century inspired, yet strives to be more 21st Century modern. It was a long distance collaboration, with countless photos and emails sent back and forth. This prototype gave me the opportunity to work out joinery details, and convey the shaping and upholstery to the client. The prototype also serves as a learning tool for the maker. After the upholstery was complete, I learned that some adjustments needed to be made to the back to make it more comfortable. Upholstery by David Osterberg.



Technical Details:

Materials: Ash, Wool/Mohair Boucle

Finish: Oil and wax

Dimensions: 24" (w) x 40" (h) x 27" (d)

Price: \$2400

No. 1316

R

Richard V. Schultz
4235 Grimes Ave S.
Edina, MN 55416
(952) 927-6207
rvschultz952@gmail.com

Dick has become a serious woodworker since his retirement 11 years ago. In addition to making pieces for friends and family, he has done numerous commissions and one of a kind pieces. Dick is a past Minnesota Woodworkers Guild president and board member. He is also a member of Xylos Gallery and some of his work can be seen at “info@xylogallery.com”.

Lantern Table Lamp

This piece was built in the style of Greene and Greene lantern lamps, although it was designed to be a table top lamp. I have always been attracted to their furniture and want to preserve and advance their work. I enjoy creating stained glass and wood furniture, which promotes both art forms. The glow of this lamp warms a room and provides an air of comfort and tranquility.



Technical Details:

Materials: African mahogany and stained glass

Finish: Ebonized and finished with oil and varnish

Dimensions:

8 3/4" (w) x 17 1/4" (h) x 8 3/4" (d)

Price: Please Inquire

No. 1317

Tony Kubalak
3660 Robin Lane
Eagan, MN 55122
(651) 452-2021
apk@uwalumni.com
www.TonyKubalak.com

Philadelphia Queen Anne Easy Chair

This chair is a mahogany reproduction of a popular Philadelphia Queen Anne Easy Chair. It dates from 1760 - 1780. Because fabric was extremely costly in the 18th century upholstered furniture was owned by only the wealthiest customers. The chair frame is typical Philadelphia construction with mortise and tenon joints. The front legs are the most elaborate and finest made of the period. They are joined to the seat frame with a dovetailed tenon.

I especially like the cone shapes on the arms and arm posts. I think they are pleasing to the eye and they were fun to construct. I also always enjoy carving a ball and claw foot with foliage on the knee.

Upholstery by Ralph Dermota of York, PA.



I have been a period furniture maker since 1999. I am interested in high style Queen Anne and Chippendale pieces. All of my period projects have been faithful copies of originals that are part of museum or private collections. I strive to make my pieces as close to the originals as possible. This includes surface texture and hand tool marks as well as construction details. In addition I strive to give the finish an aged look and feel. The goal is to have a piece that looks and feels 250 years old.



Technical Details:

Materials: Mahogany, Pine and Douglas Fir

Finish: Hand applied aniline dye, shellac & wax

Dimensions: 36" (w) x 46" (h) x 30" (d)

Price: Please Inquire

No. 1318

David Munkittrick
1108 Town Hall Road
River Falls, WI 54022
dmunks@me.com

David began making furniture and cabinets in 1983 along with four other woodworkers. That collaboration led to the Fourth Street Guild where he worked before moving to River Falls in 1986. In 1999, he joined the staff at American Woodworker Magazine as an Associate Editor. In 2008 he returned to his furniture making roots. He remains active as a freelance writer for The Family Handyman, Woodcraft, Woodworkers Journal, American Woodworker and Woodworkers Guild Of America. David is a member of Xylos Gallery in Minneapolis where his work is currently on display.

Free Form Coffee Table

The coffee table is made entirely from rescued wood. The maple top came from a downed tree that had a 3-strand barbed wire fence running through the trunk. The walnut pedestals were off-cut base flares from a sawmill. The sweep in the pedestals were carved with a Lancelot power carver and finished with a rasp. I tried to preserve the rustic quality of the slab, including the bark edge. I like the contrast between the rough exterior and the beautiful, delicate grain found on the inside.

My passion for the past 30 years is to design and build custom furniture. I believe the objects with which we interact each day should reflect the quality and beauty of all God has given us. I strive to combine structural integrity with visual beauty in every piece of furniture I build.



Technical Details:

Materials: Maple Slab, Walnut

Finish: Shellac, Water Based Poly

Dimensions: 16" (w) x 18" (h) x 66" (d)

Price: \$3800

No. 1319

B

Bob Paulson
3630 Archer Lane N.
Plymouth, MN 55446
(763) 557-5764
rmelp@comcast.net

Somewhat head of his time, Bob began woodworking using recycled materials about 65 years ago by salvaging the nails and wood from orange crates left behind the Piggly Wiggly grocery store. Over the years he has built the cabinets for a new home and lots of furniture for the family. He currently prefers one of a kind, challenging, creative projects like the lamp on display.

Spiral Post Floor Lamp

This project evolved after holding a thin shaving up to the light and noticing the grain with a warm glow showing through. The shade was made first using Birch veneer over a frame of Poplar. When it was installed on an existing lamp, it provide the warm glow I was hoping for. I have always like curved shapes and had been experimenting to create them. The post was created from 1/64 plywood laminates around a PVC pipe. To accentuate the spiral shape, light color birch veneer was used on the inside and simulated bark created on the outside. Poly wipe on and acrylic paint finishes were used along with purchased electrical components.



Technical Details:

Materials: Birch veneer, Poplar, 1/64 plywood

Finish: Wipe on Poly, acrylic paint

Dimensions: 16" (w) x 62" (h) x 16" (d)

Price: Not For Sale

No. 1320

Dale Johnson
5993 Ambassador Blvd.
St. Francis, MN 55070
(763) 753-3160
Johnson.mn@juno.com

Dale has been making a living as a woodworker for over thirty five years. It's much more than just a living, call it passion or life style, it's a big part of what defines me. "I am intrigued by new techniques and styles and I let my imagination and interests take me where they may". The search for unique material which is a challenge in the mid-west is an aspect I especially enjoy. The freedom to design and the confidence that my work is enjoyed and respected brings all the joy one could ask for in a carrier.

Bonsai Table

I have lived among the trees, warming my home, cooling my thoughts, providing a living, food for our table, our bodies and souls nourished, I owe the trees my best. I return to the forest each year to hide among these trees with my thoughts and wonder. Some of these trees have come to me as gifts from friends, a log here a burl there. Others anonymously as planks cut from faraway places. I don't travel much but my trees have. No two alike, as only nature can insure.

The Bonsai table was designed with these thoughts in mind. The Bonsai trees serve to remind me of the connection. The Bonsai table uses natural edges and refined details to represent the connection between man and nature. The table functions to display a small collection of trees that I have acquired and started from native seedlings found in our woods.



Technical Details:

Materials: Figured Swiss Pear, Figured Walnut, Maple

Finish: Wax over Shellac

Dimensions: 38" (w) x 28" (h) x 24" (d)

Price: Please Inquire

No. 1321

John E. Freemyer
8708 Meadowvale Dr.
Eden Prairie, MN 55347-2321
(952) 934-9244
jef1014@gmail.com

John Freemyer first became interested in woodworking during his high school years. After completing his college education in construction management, he eventually decided on a career in land surveying. Although he maintained his basic carpentry skills as a homeowner, he built very few furniture pieces. That changed in 2004, when his daughters asked him to start building them bedroom furniture. Since that time he has built numerous pieces of furniture. In the last few years he has started building his grandchildren furniture and toys. John expects to start building more challenging pieces when he eventually retires.

Toy Excavator

Toy excavator built from a plan in the November 2009 issue of WOOD magazine with minor modifications. Two of my grandsons are fascinated with construction equipment because their dad operates such equipment. Wood magazine has published a series of plans for construction equipment. I knew making some of the pieces would make perfect gifts. I enjoy projects that can be quickly built, but will provide hours of fun for my grandchildren and their friends.



Technical Details:

Materials: Walnut and Ash

Finish: Polyurethane (clear stain)

Dimensions: 6" (w) x 13" (h) x 15" (d)

Price: Not For Sale

No. 1322

Leigh Robertsdahl
13336 Parkwood Drive
Apt. 220
Burnsville, MN 55337
(763) 464-9192
leighrob1872@gmail.com

I started my woodworking career in North Dakota in 1989. In 1999 I moved to Minnesota and have held various positions in small custom cabinet shops in the south metro area.

Walnut Coffee Table

This table was made for a friend, and the overall design was to incorporate a religious symbol while being a conversation piece. The diamond pieced top was inspired by an earlier item but yet on a much larger scale. The inlaid celtic knot was challenging but yet rewarding at the same time. The inlay for the symbol was made with jigs and a router and filled with a colored epoxy. The goal of making a conversation piece and making people wonder how it was made was accomplished. The table was finished by Silentium Finishing of Savage, MN.



Technical Details:

Materials: Solid walnut, solid maple inlay, 1/4" & 3/4" walnut MDF, InLace epoxy

Finish: Clear Lacquer

Dimensions: 49 1/4" (w) x 18" (h) x 27" (d)

Price: Please Inquire

No. 1323

Paul Losik
13806 W. Splithand Road
Grand Rapids, MN 55744
(218) 259-8819
cbc7521@yahoo.com

I started woodworking in 2008 after my wife lost an Ebay auction for a music cabinet. Since then I've built a lot of Shaker and mission-styled pieces, placing in juried art shows and selling items throughout northern Minnesota.

Au Contraire

“[Krenov] starts with little more than a doodle ... and plunges into the building. He makes decisions as he goes, responding to the color, grain and working characteristics of the wood. Krenov calls this way of working ‘a fingertip adventure.’“

When I read that in a Fine Woodworking article, the preconceptions I had about woodworking were blown away. It was contrarian, liberating, spontaneous, creative. And it fit my personality. Begin with an overall vision, and let the heart take over, allowing the wood to write its own script. Solve problems as they come up. Practice on pine first. If you make mistakes, do your best to get over them, and move on. And celebrate finished pieces!



Technical Details:

Materials: Figured Claro Walnut, Gaboon Ebony accents and Curly Maple interior, quarter-sawn Red Oak separate tenons

Finish: Oil/varnish

Dimensions: 31" (w) x 50" (h) x 15" (d)

Price: \$5900



No. 1324

Paul Losik
13806 W. Splithand Road
Grand Rapids, MN 55744
(218) 259-8819
cbc7521@yahoo.com

Shaker Pedestal Table

The Shaker pedestal table is my hands-down favorite style of table. Its lines are fluid, almost seamless. Its form is simple, yet there is a timeless elegance in its urn-like base and arched, tapered legs. It's the quintessential American table.

I was able to visit both Shaker communities in Kentucky, studying and photographing the many sizes, styles and shapes of their pedestal tables.

The Kentucky Shakers, it seems, were ahead of their New England brethren: not only did they combine the usual function and form philosophy, they added figure by using cherry, walnut, Butternut (plus curly woods).

My piece extends that concept even more: use the finest figure you can find—all still for the glory of God, of course.



Technical Details:

Materials: Bird's Eye Maple (Sugar Maple)

Finish: Oil/varnish

Dimensions: 16 1/2" (w) x 25 1/2" (h)

Price: \$1900



No. 1325

B

rad Hopke
1355 102nd St. West
Inver Grove Hts, MN 55077
(651) 457-6165
hopke@comcast.net

I have always enjoyed building things. Started with a bookcase in my 20's, and later in life I built bedroom furniture, kitchen hutch, clocks, and a custom kitchen. I like to take on various projects that challenge my abilities. To add new design elements to my work I have taken up carving, marquetry, stained glass, and a bit of blacksmith work. I do wood working primarily as a hobby.

Wood and Iron Kitchen Stool

The inspiration for this piece was to match my newly built custom kitchen cabinets. We looked for stools in stores. Famous last words....I can build it for less then they want for a new one. So I designed the stools, received approval from the Finance Dept (WIFE). Then chose materials to make our kitchen stools. I added a leather top to match some chairs by our kitchen and the steel foot rest to add a little something you can't buy uptown. Initials carved in on the decorative piece of the stool denotes helpers who assisted me in designing and installing our kitchen cabinets. One of the two stools is on display.



Technical Details:

Materials: Maple, main stool. Leather top, steel on the foot rest.

Finish: Transtint dye base, tinted shellac, glazing, topcoat catalyzed lacquer.

Dimensions: 15" (w) x 26" (h) x 15" (d)

Price: Not For Sale

No. 1326

Mike Pfeifer
11326 Rosemill Lane
Champlin, MN 55316-2660
(612) 239-6041
mikepfeifer@comcast.net

Originally from Detroit Lakes, I've been woodworking for over 25 years now. I build most anything that people can think of..... from boxes to baby cribs, or beds to boats, I've had some very interesting projects over the years. I work with clients closely to help them get exactly what they are looking for in all of the various things they've thought up. I live in Champlin, Mn., am married, have two kids, three horses, and one cat.

Matching Lidded Boxes

Two, matching, lidded boxes, made from rustic cherry.....I found this rejected, leftover piece of cherry after finishing a different project, and I thought the crack that was running through it was very interesting. Sometimes the only good piece of wood, is a bad piece of wood. You get to see a little more of nature in a piece of wood like this, instead of the nice, regular, even grained wood that most people want.



Technical Details:

Materials: Rustic cherry

Finish: Oil/urethane

Dimensions: 13" (w) x 14 1/4" (h) x 9 1/2" (d)

Price: \$200



No. 1327

Paul Scobie
1766 Stanford Ave
St. Paul, MN 55105
(651) 698-0801
paul@scobie.org

Paul has been a hobby woodworker over the past 40 years. Mostly this has been furniture pieces for personal use. Originally he was self taught and the skills were learned by reading magazines. Lots of trial and error. Upon retirement he continued with the determination to raise his skills to a new level by attending woodworking classes, workshops and seminars.

Bedside Table & Lamp

I've always been fond of "prairie" style furniture. When I had a need for a set of bedside tables and lamps I put those interests into this project. Originally the stylized wheat was in walnut. However, the cherry darkened to a point where the wheat almost disappeared. Another learning experience. I did a little rebuild and replaced the wheat with some salvaged hard maple flooring.



Technical Details:

Materials: Cherry, walnut, maple

Finish: Oil & Varnish

Dimensions: 18" (w) x 46" (h) x 16" (d)

Price: Not For Sale

No. 1328

Jacob Wasson
JacobWasson Woodworking
444 Saratoga St. S
St Paul, MN 55105
(217) 390-5808
wassasson@hotmail.com

I have been a woodworker for the past 5 years. Many of my projects have been to furnish our house. I have recently started taking commissioned projects because I'm running out of room.

Dining Table and Chairs

Our house has a small dining room and this table fits perfectly in our space. I really enjoyed working with this unusual book matched walnut set. This was also my first attempt at building chairs and I liked working with the different angles.



Technical Details:

Materials: Walnut

Finish: Boiled linseed oil, poly and wax

Dimensions: 64" (w) x 31" (h) x 26" (d)

Price: Please Inquire

No. 1329

R

oger W. Knudson
PO Box 264
Finlayson, MN 55735-0264
(320) 233-6543
rwknudson@frontiernet.net

Retired from Corrections education for ten years now, Roger builds furniture for fun and rarely for profit. Three two-week courses at the Center for Furniture Craftsmanship and instruction from Tom Hucker have inspired me to continue this wood stuff until I drop. My preference is to make original designs but I am always watching for design influences in the studio furniture “movement”.

Bench or Coffee Table (Your Choice!)

This piece is one of several with design influence from Craig Blacklock, nature photographer, and a nod to Nakashima. Craig bought two logs of yellow birch, sawn through-and-through from Timeless Timbers in Ashland, WI from which I have built a large dining table, two coffee tables, two sofa tables, and four lamps. The wood finishes out wonderfully.



Technical Details:

Materials: Yellow Birch, retrieved after 100 years in Lake Superior.

Finish: Wipe-on Poly.

Dimensions: 50” (w) x 17” (h) x 28” (h)

Price: Not For Sale

No. 1330

R

Roger W. Knudson
PO Box 264
Finlayson, MN 55735-0264
(320) 233-6543
rwknudson@frontiernet.net

Bench

The inspiration of this came out of the blue, the geometric shapes somehow appealing to my interest. I have used the ellipse in several other designs. The ellipse needed a sharp companion.

Technical Details:

Materials: Ebonized red oak, white oak, maple, mahogany

Finish: Water based varnish

Dimensions: 46" (w) x 16" (h) x 12" (d)

Price: \$900

No. 1331

Steven McLoon
Millennium Studio
s.c.mcloon@gmail.com

Steve began woodworking in 2007, when he took the basic woodworking course at the Center for Furniture Craftmanship (CFC) in Maine. Since then, he has taken numerous courses and workshops taught by some of the top craftsmen in the country. Steve divides his studio time between turning and furniture making. He strives to celebrate the awesome characteristics of natural wood in all his work.

Turned Hollow Form

A 'hollow form' is a vessel with an opening significantly smaller than the body made by turning on a lathe. This sculpture is an evolution of a form I have been developing for a few years, which gives the illusion of one layer of wood wrapped around another. It actually is made from a single solid piece of wood. A recessed collar was turned around the opening, and then a portion of the side wall was carved away to give two elevations. The deeper layer was textured with a rotary burr to further accentuate the layer effect. The exterior of the form was turned with a different axis than used for turning the interior.



Technical Details:

Materials: Silver Maple

Finish: Danish oil followed by buffing with fine abrasives, then wax

Dimensions:

4.3" (w) x 4.6" (h) x 4.3" (d)

Price: \$300 (Includes \$50 donation to MN Woodworkers Guild)

No. 1332

S

teven McLoon
Millennium Studio
s.c.mcloon@gmail.com

Ladder Shelf Unit

This is the first iteration of a concept that has been in my sketchbook for a couple of years. My goal was to make a shelf unit that has a small footprint, is easily portable and has its own intrinsic beauty and interest. I envisioned it as a place to display the small treasures that we accumulate traveling or from weekends in the shop. I hoped that this unit would appeal to young people who live in smaller apartments and are likely to move often. I think it also could serve as an interesting accent piece in any home furnishings.

Technical Details:

Materials: Walnut center column, masur birch shelves

Finish: Tung oil and varnish, then wax

Dimensions: 9" (w) x 57" (h) x 26" (d)

Price: \$650 (Includes a \$50 donation to the MN Woodworkers Guild.)



No. 1333

Craig Johnson
Studio Tupla
PO Box 131811
Saint Paul, MN 55113-0020
(651) 644-3652
craig@studiotupla.com

My study of furniture making has taken me three times to the Inside Passage School of Fine Cabinetmaking in Roberts Creek, British Columbia, Canada, where I completed study in its Artisan, Craftsman and Journeyman programs. It is there that the teachings of Robert Van Norman and James Krenov allowed me to discover the profound effect a new way of working could have on my approach to this craft. With my wife Carol Rajala Johnson, a handweaver, I founded Studio Tupla, a full-time partnership in fine furniture making and handweaving, where we design and make unique one-of-a-kind pieces for our clients.

Vidar's Chair

This is my first chair, made during Phase 1 of a project supported by a 2012 Artist Initiative grant from the Minnesota State Arts Board. The purpose of the project was to engage in “guided and independent study focused on advancing my artistic and technical furniture making abilities, providing an opportunity to enter the more complex craft of chair making at a high level. For Phase 1, I enrolled in a chair making program at Inside Passage School of Fine Cabinetmaking. The course involved making this chair, a reproduction of a 1970 design by Vidar Malmsten, a Swedish furniture maker and friend of the well-known furniture maker, James Krenov. It is a demanding piece having finely sculpted parts, sophisticated grain graphics and compact joinery that reveal increasing complexity with each successive joint, from simple 90° live mortise and tenon, to floating mortise and tenon compound angled joinery on the curve.



Technical Details:

Materials: Ash and fiber rush

Finish: Oil and resin blend

Dimensions:

21 1/4" (w) x 32 5/8" (h) x 21" (d)

Price: Please Inquire

No. 1334

Craig Johnson
Studio Tupla
PO Box 131811
Saint Paul, MN 55113-0020
(651) 644-3652
craig@studiotupla.com

Armchair 2

This is my second chair, made during Phase 2 of a project supported by a 2012 Artist Initiative grant from the Minnesota State Arts Board. Following my Phase 1 chair making study, I returned home to apply what I learned by independently designing and making this original chair. Key influencers were “Vidar’s Chair”, also on display, as well as other chairs by Scandinavian designers of the modern era, and by extension, all that influenced them. Each is designed for a purpose. So for this project, I focused on designing an armchair to be used for “active sitting”, and specifically not for lounging. While the aesthetic of this chair points to simplicity, the making of it did not. It required that I train an especially fine eye on the shaping of the parts, and carefully fit the joinery to ensure that its physical strength properly supported its delicately refined aesthetic.



Technical Details:

Materials: Local black walnut and Danish cord
Finish: Oil and resin blend
Dimensions: 22” (w) x 28 1/4” (h) x 18 1/4” (d)
Price: Please Inquire

No. 1335

Jon Perko
3542 2nd St. NE
Minneapolis, MN 55418
(612) 789-4598
jperko66@q.com

I am an automotive tech and I grew up in Dinkytown, S.E. Mpls. I attended three or more tech schools. I then moved to the N.E. art district. I spent twenty plus years with cars and would love to spend twenty years learning the art of fine furniture.

Asian Inspired Hall Table

The design came from a Fine Woodworking web site. I have only a few years at the craft so far and thought this would add some new techniques to my experience. It sure added a few new tools to the chest. When I first started I was sweating it, then it started to come together. When the finish went on I was at rest. I think it's okay. It will look good in the living room.



Technical Details:

Materials: Walnut

Finish: Sam Maloof oil/poly

Dimensions: 48" (w) x 31 1/2" (h) x 13" (d)

Price: Please Inquire



No. 1336

David Schimke
5900 Sweetwater Cir
Excelsior, MN 55331
(612) 599-9111
dschimke@mchsi.com

Woodworking has been a wintertime hobby for the past 20 years. In my small basement shop, many projects have been in the Arts and Crafts style. Our grand kids enjoy beds, desks, night stands, and other pieces from “Grandpa’s Shop”. Hopefully some of these creations continue in use for several generations.

Desk and Gallery

Arts and crafts style furniture has always interested me. It provides a look that will last for generations. Originally this English desk had the gallery sitting on top. Today the gallery will hang on the wall above the desk allowing more space for today’s technology. The plans for this project come from Fine Woodworking magazine. What drew me to this challenge was the through dovetail joinery on the gallery and tapered desk legs. It is a lot of fun trying to use different tools and learn new skills. Of course that means new tools - great fun! Quarter sawn white oak is beautiful wood to work with and has such wonderfully rich character when finished.

The gallery has two doors and interior space for shelves or stacking files. This piece originally was meant to sit on top of the desk however, with today’s technology, desk top space can easily get used and the gallery can be accessed just above the desk.



Technical Details:

Materials: Quarter sawn White Oak

Finish: Mixture of poly, linseed oil and turpentine

Dimensions:

Desk: 45” (w) x 30” (h) x 25” (d)

Gallery: 34” (w) x 19” (h) x 12” (d)

Price: Not For Sale

No. 1337

Fran Peterson
Homecrafters Construction Co
6912 Washburn Ave S
Richfield, MN 55433
(612) 869-9569
peterson6912@q.com

Fran has been a Building Contractor and Cabinet Maker for over 28 years. Furniture making has been a hobby throughout most of his life. At a young age, he watched and learned from his father who built many pieces of furniture for the family. Now Fran has done the same and can point out pieces in most every room of his house that he has made. As a member of the Minnesota Woodworkers Guild he has honed his skills and has gotten a lot of guidance from other Guild members.

Arts and Crafts Chairs

The Arts and Crafts chairs are a style the I have always liked. These were built to accompany a previous dining room table in the same style. This tall elegant piece is accentuated by the ebony inlays. The most difficult part of this project was getting the angled thru tendons cut accurately. Through hard work it has turned into a sleek chair that will be passed down through many generations.



Technical Details:

Materials: Birds Eye Maple, Curly Maple and Hard Maple. Ebony Accents.

Finish: Poly, oil and wax.

Dimensions:

20" (w) x 46" (h) x 18" (d)

Price: Please Inquire

No. 1338

Bill Wegwerth
760 Burke Ave E
Maplewood, Mn 55117
(651) 771-2052
wwegwerth2052@comcast.net

I have been a woodworker most of my life. Since retiring from the St. Paul Fire Department, I have spent more time honing my skills in my workshop. I enjoy all types of woodworking and have recently taken up carving. This is my first entry in the Northern Woods show.

Harrison's Horse

On the birth of my first grandson, Harrison, I recognized I wanted to build something special as a gift to him. I had built a number of rocking horses in the past for family members, but knew I wanted to produce something unique. I chose to carve a gliding horse. The horse, made of African Mahogany, and stand, from Ash, took about 4 months to complete. The saddle, made of Goncalo Alves and leather, 1 1/2 months. The hollow core of the horse contains a personal message to my Grandson. I truly enjoyed every minute of this project.

“A man who works with his hands is a laborer; a man who works with his hands and his brain is a craftsman; but a man who works with his hands and his brain and his heart is an artist.”-Louis Nizer



Technical Details:

Materials: Mahogany, Ash, Goncalo Alves, Leather and Horse Hair

Finish: Oil/Poly

Dimensions:

20" (w) x 38" (h) x 46" (d)

Price: Not for sale

No. 1339

R

ay Ayotte
3206 Selkirk Dr
Burnsville, MN 55337
(952) 890-6152
rcyotte@gmail.com

I live in Burnsville MN with my wife Carmel. Woodworking has been a hobby for most of my adult life. I have been building furniture and various wooden accessories for our home and our childrens' homes as well as gifts for friends for over 30 years. I am mostly self-taught from reading Woodsmith and other woodworking magazines; most of the furniture I have built has been inspired by plans in Woodsmith. Meeting and getting to know other woodworkers through the Minnesota Woodworkers Guild has been rewarding and also a great learning opportunity.

Mission Style Coffee Table

I like the simple and functional designs of mission style furniture. Other pieces I have built over the years in this style include a pair of Morris chairs with ottoman, an end table and a glass top coffee table. This solid top coffee table was built for the home of my daughter Celeste, our son-in-law Andrew and our new grandson Leo.



Technical Details:

Materials: Quartersawn White Oak

Finish: General Finish, stain and polyurethane top coat.

Dimensions: 30" (w) x 17" (h) x 30" (d)

Price: Not For Sale

No. 1340

Tom Kaldunski
20220 Chesterfield Way
Farmington, MN 55024
(651) 460-6912
tkaldunski@gmail.com

I have been woodworking as a hobbyist since the 1970's. I enjoy working on intarsia projects. The wooden mural's depict Minnesota wildlife and scenes. I use a number of different woods with a clear finish to showcase the wide range of colors and grains in the wood.

Twilight's Refuge

This intarsia shows a natural scene along the Mississippi River refuges. Wildlife is settling in for the evening in the twilight which adds another level of refuge and protection. It was inspired by many trips taken along the river.

Intarsia is a 16th century art form that allows the use of many different woods. The use of different colored wood and the variety of grains in the wood allows for an interesting contrast. I have had to learn about how the finish and wood reacts to use the wide palate of colors. A variety of wood thicknesses helps to create the three dimensional effect of the piece.



Technical Details:

Materials: I used over 20 varieties of wood in this intarsia, such as oak, walnut, cherry, butternut, mahogany, wenge and purple heart.

Finish: A clear coat of satin polyurethane was used to highlight the colors and grains..

Dimensions: 54" (w) x 36" (h) x 4" (d)

Price: Not For Sale

No. 1341

Elise Walker
796 Wapogasset Lake Lane
Amery, MN 54001
(608) 247-5268
aewalker2@juno.com

In October, 1997 I took an adult woodworking course at our local high school and was soon captivated by the creativity and potential woodworking afforded. I continually learn new skills/techniques which are used on subsequent projects. However, more often I learn new skills to create the item I have set my heart upon making. An example is this rocking horse; this is my first time sculpting and carving a three dimensional form.

Ruby - Rocking Horse

I saw the book, *The Rocking-Horse Maker* by Anthony Dew, and immediately wanted to make an heirloom rocking horse for my grandchildren. The basic information and shape came from the book. To make the horse look more lifelike, I observed horses and took pictures of them in motion and while stationary. Dimensions were added to the basic shape and sculpted to define the muscles. Rather than using horsehair, I carved the mane. The rockers were reshaped and carvings were added.

I made two horses at the same time, 'Ruby' belongs to my son's family and 'Diamond' made from cherry wood for my daughter's family.

My friend cut the walnut tree on his farm and cut it to my dimensions. I then let it dry for a time before having it kiln dried twice. The horsehair and brass were ordered from England. "Yee-haw"



Technical Details:

Materials:

Horse: walnut, horsehair and glass eyes

Rockers: maple

Tack: leather & brass

Finish: Polyurethane

Dimensions: 73" (w) x 36" (h) x 15 1/2" (d)

Price: Not For Sale

No. 1342

A

Ilan Frank
6619 Parkwood Lane
Edina, MN 55436
(952) 938-0239
al.frank@learningmasters.com

I've been a guild member for about 8 years. After each Fall Seminar, I try to apply what I learned during the session. This year, I made 3 chisels and a marking knife from old files. I followed the instructions from Robert Van Norman. I learned it's very hard to turn a rough file into a mirror-polished chisel.

Transformation Chisels

I transformed rusty, yucky, old files into three chisels and a marking knife. I made: 1) a 5/16" beveled edge chisel for cleaning out half-blind dovetail joints, 2) a 5/8" paring chisel, 3) a 1" paring chisel, and 4) a marking knife. Each blade has a mirror finish and is mounted in a one-piece African Mahogany handle. Each tool is designed to fit my hand. There are more coats of oil and poly than I can remember. All the tools have been used to make their dovetailed container.



Technical Details:

Materials: Rusty, yucky, old files and African Mahogany

Finish: Oil and Poly

Dimensions: 1 1/8" (w) x 9" (h) x 7/8" (d)

Price: Not For Sale

No. 1343

Tim Heil
3800 Big Fox Road
Gem Lake, MN 55110
(651) 407-1300
tim@heiltruckbrokerage.com

I was introduced to wood turning in high school shop class. I like to make functional things that are beautiful and useful. Often, I work in a series. This allows me to refine shapes and understand the function and design of each object. I have made over 900 tool handles and no two have turned out exactly the same. My work has been selected for three AAW exhibitions, Spirit of the Southwest, Turned Green, and Step Up to the Plate. I've had work published in Woodwork Magazine, American Woodworker and The American Association of Woodturners Journal.

Rolling Pins

The rolling pins on display were turned on a lathe. I like to make functional things that are useful and beautiful. I work in a series. Each pin differs slightly from the previous one. This approach allows me to adjust and play with design as my series grows. I want these pins to function well and display beautifully.



Technical Details:

Materials: Curly Maple and Cocobolo

Finish: Mineral Oil

Dimensions: 18" (w) x 2" (h) x 2" (d)

Price: Not For Sale



No. 1344

A

rt Beseman
13623 Elkwood Dr.
Apple Valley, MN 55124
(952) 423-1075
artbeseman@gmail.com

I'm a semi-retired IT guy. I was a "Lead Technical Architect" with American Express, (the title is more impressive than the job was) for 25 years. Now I do some work with Human/Computer Interface design. I've done furniture building off and on for maybe 12-14 years. But as my wife said, I seemed to collect tools more than built projects. I favor the Greene & Greene style of the Arts and Crafts period. But I have done a few more modern pieces.

Greene & Greene Style End Table

This is based on the style of the Greene brothers. It is an end or bedside table and includes many of the G&G elements; Cloud Lifts, Ebony Pegs. Waterfall type legs, and exposed Finger Joints.

I like this style of the Arts and Crafts movement furniture as it has a true 1900's feel yet it can fit into a modern environment.

I used Walnut (this was the second most common wood after Mahogany for this period) because I like the look of the grain in this design.



Technical Details:

Materials: Walnut, Green Marble and Ebony

Finish: Danish Oil

Dimensions: 24" (w) x 29" (h) x 24" (d)

Price: Not For Sale

No. 1345

James Sannerud
1755 Laurel Ave
St. Paul, MN 55104
(763) 434-2882
jsannerud@gmail.com

Jim Sannerud is a professional woodturner in St. Paul, Minnesota. His inspiration is a reflection of his Scandinavian heritage, especially the folk art of ale bowls, shrink boxes, and wooden spoons. Jim has been teaching woodturning in the US since 2006 and has been studying and teaching in Northern Europe and Ukraine since 2007.

Kissing Fish

Green turned Birch, Hand carved rim detail using a Sloyd Knife. At first glance looking at the rim detail it may appear to be a re-occurring pattern, but it is not. I start carving the rim detail on one side of the bowl with my knife holding it in my lap and randomly create coves, beads, and points but always making a kissing fish motif. Can you find it?



Technical Details:

Materials: Birch

Finish: Milk Paint and Linseed Oil.

Dimensions: 13" (w) 6" (h) x 12" (d)

Price: \$450

No. 1346

James Sannerud
1755 Laurel Ave
St. Paul, MN 55104
(763) 434-2882
jsannerud@gmail.com

Wooden Skis

Birch Skis. Steam bent, shaped and carved with hand tools. Finished with Milk Paint and PineTar.



Technical Details:

Materials: Birch

Finish: Pine Tar and Wax Emulsion

Dimensions: 4" (w) x 72" (h) x 1/2" (d)

Price: Please Inquire

No. 1347

B

ob Kraby
848 Case Ave
St. Paul, MN 55106
(651) 776-5318
woodbkraby@yahoo.com

Bob became involved in woodworking nearly a decade ago. He currently enjoys a successful career as a professional woodworker with Forest Products Supply in Maplewood, MN. Bob is an apprentice with a highly-respected craftsman in the woodworking community. When he is not working, Bob spends countless hours in his home-shop developing the highly artistic side of his craft, consistently striving to learn and master new techniques.

Hall Tree

While searching for a piece of wood to make an organic style hall tray, (a place to empty my pockets) I found a cross section of a cherry branch. This particular chunk of wood needed to be a leaf; the grain, marbled figure and natural cracks begged to once again be part of a tree. The seed was planted. The cherry board was trimmed into an oak leaf. Next it needed to grow some branches. Ash bends well and is visually pleasing, so the braches grew. The branches grew tall and a coat rack emerged. After grafting on a walnut base and pruning some twigs, here is my hall tree, or as far as its grown to date.



Technical Details:

Materials: Cherry, Walnut, Ash

Finish: Oil and Wax

Dimensions: 50'' (w) x 77'' (h) x 18'' (d)

Price: \$1500

No. 1348

K

orrin Lohmann
2223 2nd St. NE
Minneapolis, MN 55418
korrinlohmann@gmail.com

Korrin Lohmann is inspired by how furniture, as an object, can create or change the user and space. For example through design; furniture has the ability to create comfort or discomfort, gathering or separation, concentration or distraction. Through her studies of Interior Design, Architecture and most recently Industrial Design she aspires to understand the integrity and connection of materials thru built work. She is eager to understand the materials that are being shaped, formed and finished.

Acute

The story of “Acute” is one that is about learning to make. I am very interested in joinery, wood and connection of materials. The through dado in this piece was my first and not my last! I have a series of designs that involve joinery that I have never attempted. Through this learning process I hope to design and make furniture that expresses exposed joinery. I love to see how materials connect. In this piece one can see the dado as well as a strong horizontal surfaces that leads the eye to the joint. I want the thinning horizontal surface to draw the eye to the vertical.



Technical Details:

Materials: Cherry wood, Maple plugs

Finish: Polyurethane

Dimensions: 18” (w) x 16” (h) x 9” (d)

Price: \$350

No. 1349

Peter Lewon
1731 Helmo Rd N.
Oakdale, MN 55128
peterlewon@comcast.net

My first attempt at woodworking was less than glorious. At the age of eleven, I determined that lack of training on tools or safety was not enough of a deterrent to prevent me from attempting to amputate the tip of a finger on my father's band saw. Fortunately, I was unsuccessful. High school wood shop taught me a lot, and I've been learning ever since. Retired now, but having dabbled in woodworking, art and music for many years, my first entry here allows me to meld all three interests into one composition.

Once In A Blue Moon

While basically a glorified box, a guitar cabinet does not reproduce sound like a full range P.A. speaker. Each is designed to produce a more limited, but particular sound that has distinct audio qualities of its own, much like different kinds of guitars. In addition to the usual construction considerations, weight, size and acoustical properties of materials enter into the design. And most importantly,...no rattles or buzzes allowed!

Technical Details:

Materials: Red elm, maple, MDF,
Wuntz tube amplifier, Eminence
Ragin' Cajun speaker

Finish: Dye, polyurethane, tung oil
and boiled linseed oil

Dimensions:

22" (w) x 23" (h) x 13" (d)

Price: Not For Sale



No. 1350

Jeff Anderson
4268 Ottawa Ave S.
St Louis Park, MN 55416
(952) 925-9098
andhersons@comcast.com

From a long line of craftsman, Jeff has always enjoyed designing and creating everything from small machinery to custom furniture. Jeff has been a machinist by trade often designing and making his own hardware and fasteners for his projects. In 2005 he started his own company called Phoenix Wood. Jeff's primary work is in restoration and custom furniture, although he is looking forward to making custom knives in the future.

Journey

This piece was created for our daughter who after a long journey is happily back home with family and friends.

Technical Details:

Materials: Fiddle Back Maple and Mahogany with Sterling Silver Inlay

Finish: French Polish

Dimensions: 10" (w) x 4" (h) x 8" (d)

Price: Not For Sale

No. 1351

Clark Sweet
3124 Minnehaha Ct
Wayzata, MN 55391
bymn3181@gmail.com

I retired recently after careers in education, business and consulting. But I have always been intrigued by the design and construction challenges of fine furniture and by the skill of artisans in meeting those challenges. So now I have even more time to dream up and try to execute ever more demanding projects myself.

End Table

This piece was partially inspired by a table I saw in a museum that had a ‘dished’ top and I wanted to see if I could successfully replicate that kind of top. Also I decided the challenge of building something without any square corners would be interesting and match the overall design.



Technical Details:

Materials: Cherry

Finish: Danish oil, tung oil

Dimensions: 15” (w) x 21” (h) x 23” (d)

Price: Not For Sale

No. 1352

Timothy J. Gorman
4200 Washburn Ave N
Minneapolis, MN 55412
(612) 522-7091
timothy.gorman@usbank.com

Tim Gorman has been designing and building his furniture in Minneapolis since 2001. He is the recipient of numerous grants and awards including the Minnesota State Arts Board grant and Best in Show at the Northern Woods Exhibition. He received a BFA degree in industrial design and metalsmithing from the University of Michigan and an MFA in industrial design from the University of Kansas.

The Taller Sister

A friend of mine had a large maple tree taken down in her yard and asked me if I wanted to use the pieces for firewood. Never being one to turn down free wood, I said yes and loaded up my truck with the largest parts of the trunk. As I began to saw the sections apart, I realized that much of the wood was beautifully spalted. Of course, at that point, I couldn't simply burn it in my wood stove, so I sectioned the largest pieces and began creating a series of hollowed vessels. As I worked on them, it occurred to me that they could be thought of as siblings from a single parent tree. For this reason, I called this one the "Taller Sister" because of its delicate patterning and feminine proportions.

Technical Details:

Materials: Spalted Maple, Ebony and Holly

Finish: Lacquer

Dimensions: 10" (w) x 17" (h) x 10" (d)

Price: \$1500

No. 1353

M

Matthew McCormick
22380 Marie Ave
Rogers, MN 55374
(763) 639-4428
mccormickfootball@gmail.com

I am 11 years old and very new to woodworking. I took up woodworking with my dad as he started to set up a home shop last year. I have been working in the shop with him for about the past 8 months. I have finished several small pieces including a few bandsaw boxes and two pens. I like making things because I enjoy seeing the finished project and feel excited to say I made that myself. My current interest is to learn more about making my own hand tools to use for all my future projects.

Krenov Style - Wood Jack Plane

This plane was built to be used in my dad's and my workshop. It is my first major woodworking project.

I received as a gift, participation in an online plane making class with Scott Meek from my parents for Christmas. During and after this class, I made this Jack plane - it is the first tool in my personal collection. I did all of the major and detail work. My dad helped me mill the lumber from rough stock.

I really like how this plane feels when using it - I like it more than my dad's metal planes. I recommend everyone have at least one wooden plane in their shop.

Technical Details:

Materials: Quarter Sawn White Oak

Finish: Boiled Linseed Oil and Paste Wax

Dimensions: 11 3/4" (w) 3 1/2" (h) x 3 1/8" (d)

Price: Not For Sale

No. 1354

Lyle Thompson
402 Gates
Elk River, MN 55330
(612) 719-9218
Demonmonkeyboy@aol.com

I've been doing woodworking and turning for 10 years. I've made wood products including a baby swinging cradle, jewelry boxes and other assorted small furniture.

Wine Cart

My Wine Cart can be use to display up to 12 bottles of wine. It also contains space for up to 12 wine glasses (depending on the size of the glass). The top is designed to be used as both a cutting board and a serving tray. The top lifts off with handles on the ends. Beneath the tray is a storage area for bottle openers or other things you may need for your party.

I first used this design, found at local library, to build a gift for my daughter. She collects wine and loves to have friends over for wine parties.

Technical Details:

Materials: African mahogany

Finish: Wax an oil or urethane

Dimensions: 24" (w) x 34" (h) x 12" (d)

Price: Please Inquire



No. 1355

Cutting Board and Trivet

Checker design cutting board and matching trivet.

Technical Details:

Materials: Maple, Walnut, Brazilian Cherry and African Mahogany

Finish: Wax an oil or urethane

Dimensions: 24" (w) x 34" (h) x 12" (d)

Price: Please Inquire

No. 1356

Jeff Hand
5844 Portland Ave S.
Minneapolis, MN 55417
(612) 710-2004

Jeff is a transplant from the Texas panhandle where there is nary a tree to be found. Fifteen years ago he traded the wind, tumbleweeds and flat plains for an abundance of trees, lakes and four distinct seasons. He found his way to the MN Woodworkers Guild at the 2007 Northern Woods Exhibition and never looked back. In addition to woodworking, Jeff also enjoys experimenting with making hand tools and tool restoration. He currently lives in Minneapolis with his beloved Kate.

Shaker End Table

I found this table in an older issue of Woodworking Magazine which was known for leanings toward hand tool techniques and practices. The version in the article was adapted from a Thos. Moser table design. Making this table was really a skill building exercise for me. Traditional mortise and tenons and dovetail joinery were employed as well as raised panel techniques for the drawer bottom. With the minor exception of milling the drawer sides, all the construction and joinery was executed with hand tools. Hide glue was used as the adhesive. As with most Shaker and Shaker-inspired furniture, I find this design to be elegant and unassuming not to mention a fine teacher.



Technical Details:

Materials: Walnut, Cherry, New Zealand Pine

Finish: Shellac, Polyurethane

Dimensions:

18" (w) x 27 3/4" (h) x 18" (d)

Price: Not For Sale

No. 1357

Jeff Hand
5844 Portland Ave S.
Minneapolis, MN 55417
(612) 710-2004

The Box That Scrap Built

I wanted to challenge myself to make something small and interesting out of various cutoffs and left over scraps I had in the shop. The maple isn't a 'scrap' per se but the challenging figure had made my previous inexperienced attempts seem like I would never be able to use it. A few years later and armed with more knowledge, I was able to use the appropriate hand tool techniques to expose the wonderful chatoyance of the figure. This little box of drawers may end up as a storage area for jewelry or perhaps it will collect odds and ends on my desk.

Technical Details:

Materials: Figured Maple, Lacewood
& Mahogany

Finish: Shellac

Dimensions:

6" (w) x 11 1/2" (h) x 5" (d)

Price: Not For Sale

mark laub Studios

distinctive furniture designs

minneapolis

san francisco

**PROUD SPONSOR OF THE 2013 NORTHERN WOODS
'BEST FIRST TIME IN SHOW' AWARD**

Celebrating 15 years of creating original, occasionally functional, art furniture.

I extend my thanks and gratitude to the **Minnesota Woodworkers Guild** and all its members for the advice and inspiration you have generously given to me during all these years.

I am particularly grateful to my clients and customers whose support has convinced me that craft and art will always remain relevant, important, and honorable.

marklaubstudios@gmail.com
www.marklaub.com
612.210.7793



CONTACT.

PHONE.

952-500-8812

WEB.

AMERICASWOODSHOP.COM

EMAIL.

INFO@AMERICASWOODSHOP.COM



ABOUT.

America's Woodshop is a workshop located in Burnsville MN, that is open for hobbyists to professional woodworkers who have a passion for the craft, but not the tools, money, or space to own a high end shop. We also offer classes from our team of teachers as well as local and world renowned guest instructors. Our intent is to provide a location where a craftsman's ability is not constrained by lack of equipment or educational resources. Our 10,000 square foot, heated and air-conditioned facility is split into two sides; an open woodshop side, and a classroom lab side. The shop also has a 1,000 square foot classroom up front and a small brush finishing room.

EQUIPMENT.

- + Timesaver 36" Belt Sander
- + (2) 3hp Table Saw
- + (2) 16" Shop Fox Wood Lathe
- + Powermatic Mortiser Chisel
- + 8" Shop Fox Jointer
- + Shop Fox Spindal Sander
- +20" Shop Fox Planer
- + 14" Jet Band Saw
- + Makita Compound Miter Saw
- + 6" Shop Fox Edge Sander
- +18" Shop Fox Band Saw
- + Kreg Pocket Screw Machine

AND LOTS MORE!

Mike Siemsen's School of Woodworking

schoolofwood.com

Woodworking classes with a hand tool focus.

Student comments:

I had a great time up there in your shop this weekend. Thanks very much for your hospitality and instruction. I learned a great deal (my wife and boys really liked the chest) and I'm looking forward to continue to learn more. I hope to make it back up there for another class before too long. Instruction with someone who really knows woodworking as you do can really make a difference. Gene D.

Just wanted to thank you again for the skills gained this past Sunday. I really had a great time! Grant S.

A big THANK YOU for last Saturday's sharpening workshop! Bruce M.

I took one of your classes a few years back on using hand tools, it was one of my best investments in acquiring woodworking skills, a great class. My son in-law has a birthday coming up and I would like to get him the class on Sharpening Hand Saws. Alan P.

You have setup a great environment where people can learn a "gateway" skill. It was a diverse group with different skill levels and capabilities. We all focused on our tasks and you were able to answer questions as required. Mike Z.

Phone: 651-257-9166

e-mail: mike@schoolofwood.com



WOODCRAFT
Helping You Make Wood Work

Woodcraft Is The Area's
Largest Supplier Of Quality
Tools, Supplies & Advice

- Knowledgeable Sales Staff
- Attention to Quality
- Education & Expert Advice
- Wood & Lumber

Visit Us Today.
Over 15,000 Tools & Supplies!

	1494	
135W		Lyndale
	90 th St	★

9125 Lyndale Ave. South
Bloomington, MN 55420
952-884-3634

Quality Woodworking
Tools • Supplies • Advice

YOUR WOODWORKING SUPERSTORE



FOR THE PROFESSIONAL AND HOME WOODWORKING ENTHUSIAST

10% OFF Accessories and Hand Tools

Excludes Bare Tools and Cordless Batteries. Applies to in stock items only. Not applicable on sale items. Must show membership card to receive discount.



DEWALT



DEWALT



DEWALT



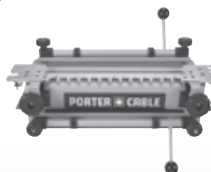
DEWALT



PORTER CABLE



PORTER CABLE



PORTER CABLE



BOSTITCH



DEWALT



DEWALT

Service Before and After the Sale!

With a reliable and factory trained service department, we'll have any of your tools needing repair up and running in no time.

SINCE 1948



SIGN UP ONLINE

E-MAIL ADDRESS

ACME TOOLS®

BUILDING • REMODELING • WOODWORKING • LANDSCAPING™

acmetools.com

QUALITY • SERVICE • SELECTION • VALUE

PLYMOUTH

494 and Rockford Rd.

763-559-8665 • 866-681-8665

Store Hours: Mon-Fri 7:00-5:30 • Sat 8:00-5:30

Also located in Duluth and Bemidji

9 Locations To Serve You In MN, ND and IA

We reserve the right to correct errors, limit quantities and terminate any offer at any time.



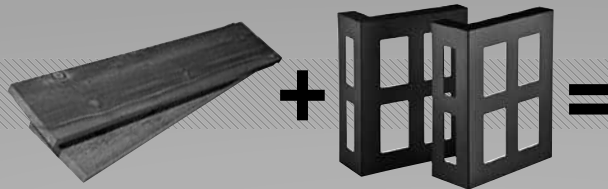
Create with Confidence™

Your Woodworking Headquarters

- Hardware • Finishing • Power Tools • Hand Tools
- Lumber • Turning • and More!

Custom furniture made easy.

I-SEMBLE®



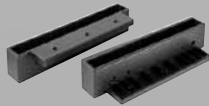
47934



48832



47512



I-Semble™
Slip-on Shelf
Brackets



I-Semble™ Shelf
Blocks, 6"W x 13"H,
2-Pk.



I-Semble® Shelf
Blocks 10"W x
13"H, 2-Pk.

ROCKLER SHUTTER SYSTEM
Save up to 75% by building
your own shutters!



**Rockler 3-Piece Silicone Glue
Application Kit**

- Includes brush, tray and spreader.
- Easy clean up, whether dry or wet.
- Notch in tray for holding brush.



MIXING MATE™

Mix, pour and store with no mess.



FREE DEMOS EVERY SATURDAY!

3 convenient Twin Cities locations, visit one today!

Burnsville: 2020 W. Cty Rd. 42 • (952) 892-7999 **Maplewood:** 1935 Beam Ave. • (651) 773-5285

Minnetonka: 12995 Ridgedale Dr. • (952) 542-0111 or online at rockler.com

DISCOVER WOODTURNING—JOIN MWA AND AAW

Minnesota Woodturners Association
and the
American Association of Woodturners

For those who enjoy working with wood

- Monthly meetings
- Professional demonstrations
- Classes and mentoring at all levels

mnwoodturners.org

woodturner.org | 651-484-9094 | galleryofwoodart.org

Visit our gallery in the Landmark Center | Saint Paul, MN

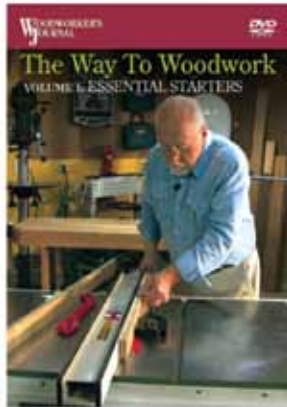


The Way To Woodwork

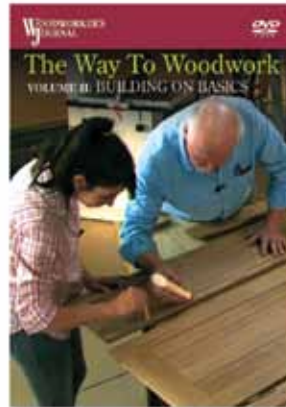
3-Volume DVD Set: Woodworking as it should be done!



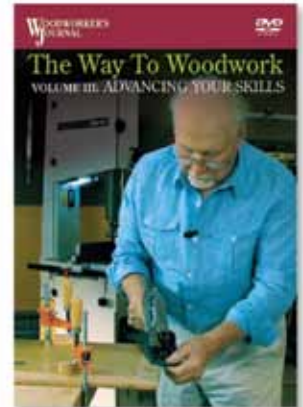
The keys to woodworking, with master woodworker Ian Kirby.



Volume I: Essential Starters
Item #44643 \$29.99



Volume II: Building On Basics
Item #46416 \$29.99



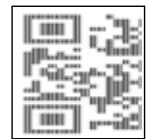
Volume III: Advancing Your Skills
Item #47593 \$29.99



The 3-Volume DVD Set
The Way to Woodwork
 Item #44623 ~~\$79.95~~ **\$59.95**
 Individually: \$29.99 each

Free Preview of Ian Kirby in the shop.

SCAN HERE FOR VIDEO!



CALL 800-610-0883 (mention code WJ1263) Order online at www.woodworkersjournal.com/DVDs

Exhibitor's Index

A

Anderson, Jeff 59
Ayotte, Ray 48

B

Beseman, Art 53
Beutel, Jerry 18

F

Ferber, Linda 11
Ficke, Joel 20
Frank, Allan 51
Freemyer, John 30

G

Gorman, Timothy 61

H

Hand, Jeff 64, 65
Heil, Tim 52
Holtz, Jason 24
Hopke, Brad 34

J

Johnson, Craig 42, 43
Johnson, Dale 29

K

Kaldunski, Tom 49
Knudson, Roger 38, 39
Krabby, Bob 56
Kubalak, Tony 26

L

Lane, David 10
Laub, Mark 17
Lewon, Peter 58
Lohmann, Korrin 57
Losik, Paul 32, 33

M

McCormick, Matthew 62
McLoon, Steven 40, 41
Munkittrick, David 27

N

Nelson, Nicholas 21
Neu, Ed 16

P

Paulson, Bob 28
Perko, Jon 44
Peterson, Fran 46
Pfeifer, Mike 35
Pitschka, Charles 14, 15

R

Robertsdahl, Leigh 31

S

Sannerud, Jim 54, 55
Schimke, David 45
Schultz, Dick 25
Scobie, Paul 36
Siemsen, Mike 22, 23
Sweet, Clark 60

T

Tendick, Richard 12, 13
Thompson, Lyle 63

W

Walker, Elise 50
Wasson, Jacob 37
Wegwerth, Bill 47
Wood, Greg 19

YOUNGBLOOD

LUMBER CO.

Wholesale supplier since 1876

- FAST SHIPMENT AND DELIVERY
- FINE QUALITY CABINET GRADE MATERIALS
- ONE ON ONE SERVICE REPRESENTATIVES
- WIDE RANGE OF INVENTORY
- COURTEOUS KNOWLEDGEABLE SERVICE
- MATERIALS SORTED OR SELECTED SPECIFICALLY FOR YOU

Wholesale prices to guild members

HARDWOOD
Lumber and
Plywood

SOFTWOOD
Lumber and
Plywood

SPECIALTY
Panel
Products

STARON
Solid
Surface

NEVAMAR
Decorative
Laminate

OFFICE HOURS
7:30AM-4:00PM

YARD HOURS
7:30AM-3:45PM

SATURDAY HOURS
8:00AM-11:45AM

1335 CENTRAL AVENUE NE • MINNEAPOLIS, MN 55413
612-789-3521 • 800-933-1335 • FAX 612-789-9625

Web Site: www.youngbloodlumber.com

Forest Products Supply, Inc.

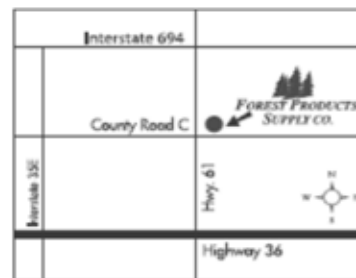
Hardwood lumber supplier since 1972

We have the best selection of domestic and exotic hardwood lumber in the Twin Cities. We have installed a new 52" wide belt sander with three sanding heads to help you with your larger projects.

Forest Products provides:

- Seventy different species of lumber in stock
- 10% discount on lumber to guild members
- Cabinet grade plywood (nearly any plywood can be custom ordered)
- Exotic one of a kind turning stock
- Slab lumber up to 4 inches thick and 24 inches wide
- Sanding services (52 inch time saver)
- Planing services (24 inch planer)
- CNC custom cutting services
- Resaw services (resaw up to 12 inches)
- Free advisory services on your furniture or cabinet projects

LOCATION:
1 Light North of Hwy. 36 on Hwy. 61
Northeast Corner



FOREST PRODUCTS SUPPLY INC.

2650 East Highway 61
Maplewood, MN 55109

Phone (651) 770-2834 • Fax (651) 770-3376

www.forestproductssupply.com

HOURS:

9:00 a.m. - 8 p.m. Monday-Thursday
9:00 a.m. - 5 p.m. Friday
9:00 a.m. - 3 p.m. Saturday
Closed - Sunday