

Thirty-Third Annual

Northern Woods

An Exhibition of Fine Woodworking



Photo by Ramon Moreno

Sanmon Table by Jamie Schell

2015 Best in Show



*Eden Prairie Center
Eden Prairie, Minnesota
21- 24 April 2016
Minnesota Woodworkers Guild
www.mnwwg.org*



mark laub Studios

distinctive furniture designs

minneapolis

san francisco

**PROUD SPONSOR OF THE 2014 NORTHERN WOODS
'BEST FIRST TIME IN SHOW' AWARD**

Celebrating 16 years of creating original, occasionally functional, art furniture.

I extend my thanks and gratitude to the **Minnesota Woodworkers Guild** and all its members for the advice and inspiration you have generously given to me during all these years.

I am particularly grateful to my clients and customers whose support has convinced me that craft and art will always remain relevant, important, and honorable.

marklaubstudios@gmail.com
www.marklaub.com
612.210.7793

Table of Contents

Welcome	4
Award Descriptions	7
Judges' Biographies	8
Entries	10

Sponsors

Anonymous

Minnesota Woodworkers' Guild

mnwwg.org

ShopBot Tools

www.shopbottools.com

Joe Morgan

Jm4finefurniture@yahoo.com

Tom Caspar

tcaspar1910@gmail.com

Thomas R Schrunk

www.ThomasSchrunk.com

Eden Prairie Center

An American Original - A Minnesota Tradition

Eden Prairie Center is pleased to host the thirtieth annual edition of The Minnesota Woodworker's Guild Northern Woods Exhibition of Fine Woodworking. We anticipate many positive responses from our customers who appreciate the arts, and we have found our work pleasantly surprises newcomers to the exhibit who are shopping at Eden Prairie Center. It's easy to get caught up in the amazing craftsmanship and forget what you came for!

This show displays the high level of artistic talent the Minnesota Woodworkers' Guild represents. The pieces in the show are made by hard-working, dedicated artisans who appreciate the traditional skills required to work with wood. There are many factors involved in the creation of the pieces on display, and each one is unique to it's own creator's personality and interpretation. We hope you will appreciate this effort as you view and admire the works of art. Your most outstanding impression will undoubtedly be that of the quality of workmanship and design which you see through the show.

We thank the Minnesota Woodworkers' Guild for choosing Eden Prairie Center as the site for this exhibition and wish its members the best of shows and much future success.

General Manager

Welcome to the Northern Woods Exhibition

The Northern Woods Exhibition is an annual woodworking show and competition sponsored by the Minnesota Woodworkers' Guild and hosted by the Eden Prairie Center. The show provides an opportunity for woodworkers to display and discuss their craft, and for the community to view the best in high quality woodworking design and construction. The pieces on display are works of art in addition to being functional furniture.

Education is one of the main goals of the Minnesota Woodworkers' Guild. Many of the pieces in this show reflect skills learned at monthly meetings, workshops and seminars sponsored by the guild. If you are a woodworker who wants to learn new techniques and meet with others who are willing to share their knowledge, please be our guest at a meeting and consider becoming a member.

Enjoy the show!

Jeff Hand
President
Minnesota Woodworker's Guild

Northern Woods Committee

The Northern Woods Exhibition Committee is composed of several guild members who volunteer their time, energy and expertise to organize this show. They meet each month from December until the show starts. They each receive an assignment or two to make arrangements to make the show a success. This years committee members are:

Charlie Kocourek	~ Chairman
Jerry Beutel	~ Banquet
Richard Tendick	~ Judges, Posters
Mark Laub	~ Sponsors
Scott Grove	~ Master of Ceremonies
Tony Kubalak	~ Show Catalog, Show Brochure & Placards
Rutager West	~ Award Trophies
Lonnie Bryan	~ Promotions
Jon Perko	~ Photography, Post Show Recognition
Ed Neu	~ Booth Schedule, Judges' Packets
Jeff Hand	~ President

If you have suggestions or comments about the show or would like to help with next year's show, please contact one of the above committee members. To view additional pieces of work from past years of Northern Woods as well as our members' gallery, please visit our web site at www.mnwwg.org

Judging

All entries will be judged in a pool rather than in separate categories for each form of furniture. The judging categories are designed to reward woodworkers who are good at creating new ideas or interpreting older ones as well as those woodworkers who are skilled with machines and hand tools. The judges will score how well they liked each piece and how well it was made. Additionally, judges will offer constructive verbal comments on a voice recorder.

The judging categories have been designed to encourage you to enter a piece regardless of your status as a woodworker. It is more than a competition for prizes. The show is meant to be a display of the state of the art of woodworking in Minnesota and a chance for guild members to see what their peers have been up to in the last year. You may decide to enter a piece but not have it judged.

Each piece is eligible to receive only one award from the judges. These awards are listed on the facing page. All pieces are still eligible for the Peer Award, the People's Choice Award and the Paul Lee Award.

Additional Awards

In addition to the regular awards, the Minnesota Woodworkers' Guild is pleased to announce two additional awards. The Paul Lee Award is dedicated to the memory of a person special to guild members.

Paul Lee Award

This award honors the work of the late Paul Lee, one of Minnesota's most extraordinary woodworkers. Paul learned the basics of traditional craftsmanship at Boston's North Bennet Street School and was a long time member of the Fourth Street Guild, here in Minneapolis. His work ranged from Queen Anne chairs and desks to whimsical jewelry boxes inspired by local grain elevators and turn-of-the-century brick warehouses. The award will be given to the best entry that has a playful spirit and sound construction.



The Thomas R. Schrunk Excellence in Veneering Award

This award is to be given for the best use of veneer in a project at Northern Woods.

Criteria include proper joints, correct book matching, finish which exhibits the properties of the veneer. Special consideration will be given for marquetry, parquetry, and decorative work.

Award Categories

BEST IN SHOW

The winning piece should exhibit the best qualities of most of the following categories. Sponsored by *Youngblood Lumber*.

BEST ORIGINAL DESIGN

A well-designed piece must be both useful and pleasing to the eye. Will it perform its intended job? Good design is in large part a subjective opinion. It is difficult to define what good design should look like, but we can agree how it should affect a thoughtful critic. It invites a second, more intimate look, and asks to be touched by hand and spirit. This award is to be presented to the best design, one that is not a copy of a previously designed piece, i.e., an original design or a unique adaption of a design style. Sponsored by *Fine Woodworking Magazine*.

BEST TRADITIONAL PIECE

This is an award for the piece which is built in the traditional manner, a reproduction or a piece heavily influenced by a traditional design. Sponsored by the *Society of American Period Furniture Makers*.

BEST DETAIL

The finest craftsmanship is often just a small part of a piece but makes all the difference. This award goes to the best conceived and/or most deftly executed detail that really makes the piece stand out. This might be an exceptional set of dovetails, an expertly carved detail or an exquisite inlay. Sponsored by *Bridge City Tool Works*.

BEST HANDWORK

The use of hand tools carries a long and rich tradition in woodworking. Successful handwork should not be judged by machine standards. It produces surfaces and shapes that are more varied and personal, free from the limitations imposed by machines. Pieces submitted for consideration in this category must have all surfaces finished with hand tools and all joints hand cut. A description of handwork involved must be submitted for use by the judges. Sponsored by *Lie-Nielsen Toolworks, Minnesota Woodworkers' Guild*.

BEST FINISH

The finish may enhance the natural beauty of wood or alter its texture and color. A good finish elevates one's perception of the piece to which it is applied. Depth, luster, and clarity are characteristics of a good finish. Sponsored by *StopLossBags, Old School Arts Center*.

THE PEOPLE'S CHOICE

This award is determined by ballots submitted by the public. It recognizes those people's favourite piece in the show. Sponsored by *Forest Products Supply*.

BEST CARVING

This prize is awarded to the piece with the best use and execution of carving. It is differentiated from the Best Handwork award in that the carving is a major element of the piece. Sponsored by *ACME Tools*.

BEST TURNING

This award honours the tradition of turning. This winning piece will exhibit quality of form as well as execution. Sponsored by *ACME Tools*.

BEST FIRST TIME IN SHOW

Whether professional or amateur this award goes to the best piece entered by a first time Northern Woods exhibitor. Sponsored by *Mark Laub Studios*.

MOST TECHNICALLY ACCOMPLISHED

This is an objective assessment. The best work will exhibit a mastery of many woodworking techniques. It will respect the limitations of working in wood. Qualities to look for include flawless treatment of surfaces, precise joinery and carefully controlled detail. The award will take into account the difficulty of the undertaking. Sponsored by *Woodcraft, ACME Tools*.

WOODWORKING FOR PLEASURE

This prize is awarded to the best piece exhibited by a person for whom woodworking is an avocation. Sponsored by *Mike Siemsen's School of Woodworking*.

JUDGES' AWARD

Sometimes a piece worthy of recognition doesn't fall into any of the award categories. It may have something special about it that is hard to define, or the judges may choose, at their own discretion, to fit any piece into this category. They may also use this award for recognizing a piece that ran a close second to one of the other category winners. Sponsored by *Xylos*.

PEER AWARD

This is decided by balloting among all Guild members coming to the show. You will be given a chance to vote for your favorite piece (other than your own) and runners up. Sponsored by *Rockler Woodworking and Hardware*.

Best Youth Piece

This award will be made to the "Best" piece submitted by a youth, age 18 and under. The piece will be judged on overall craftsmanship. Areas to be considered will be selection of materials appropriate for the piece, execution of joinery, and quality of finish and its appropriateness for the piece. Complexity of the piece will be considered. Extra consideration will be given to pieces of original design.

Note that all categories are awarded at the judges' discretion. If they do not feel any one piece meets the winning criteria of a category, that category's award will not be given.

2016 Judges

Craig Jentz

Craig's profession is IT management however his real passion is building custom furniture using high quality tools. He is a self-taught woodworker and has made almost all the furniture in his home, with current production helping fill the homes of his two grown sons. Craig especially likes the design process, which for him consists of a few rough sketches followed by scale models. Modifying and building alternative models confirms the final design. Full-size pieces are built by scaling up the models and figuring out the details along the way. No engineering drawings or CAD which is strange given that he is an IT guy who had three years of high school drafting classes. Craig got involved in the Guild in 1984 when there were fewer than 30 members. He and a few other members were instrumental in defining and running Northern Woods in the early 1990's.



Scott Grove

SCOTT GROVE is a third-generation artist. As a self-taught woodworker, he is known for layers of artistic expression and creative vigor; his pieces are a combination of unique carved textures, radiant veneers, and copper polychrome finishes. He creates a desire to touch each piece for a sensuous, pleasurable experience. Sophisticated and elegant with a touch of whimsy, his work raises a sense of wonder and delight. Based in the Finger Lakes Region of Western New York, Scott produces commission work, sculpture, speculative furniture, and limited edition pieces for interior designers, architects and private collectors. He consults on a variety of topics including furniture design, composite fabrication, manufacturing production efficiencies, business practices, and sales and marketing.



Brad Holden

Brad Holden is a Minneapolis-based woodworker/cabinetmaker with over 25 years of experience in the field. Brad has also authored many articles on a wide variety of woodworking topics for American Woodworker magazine and Woodworkers Journal. Brad is currently part of a shared shop in Northeast Minneapolis, working on custom furniture and cabinetry for commercial as well as residential applications.



SAPFM

We are a non-profit organization whose mission includes providing a forum for the understanding and appreciation of American period furniture, its history, and related materials and techniques. Our members include professional full-time cabinet-makers, serious amateurs, conservators, historians, and educators.

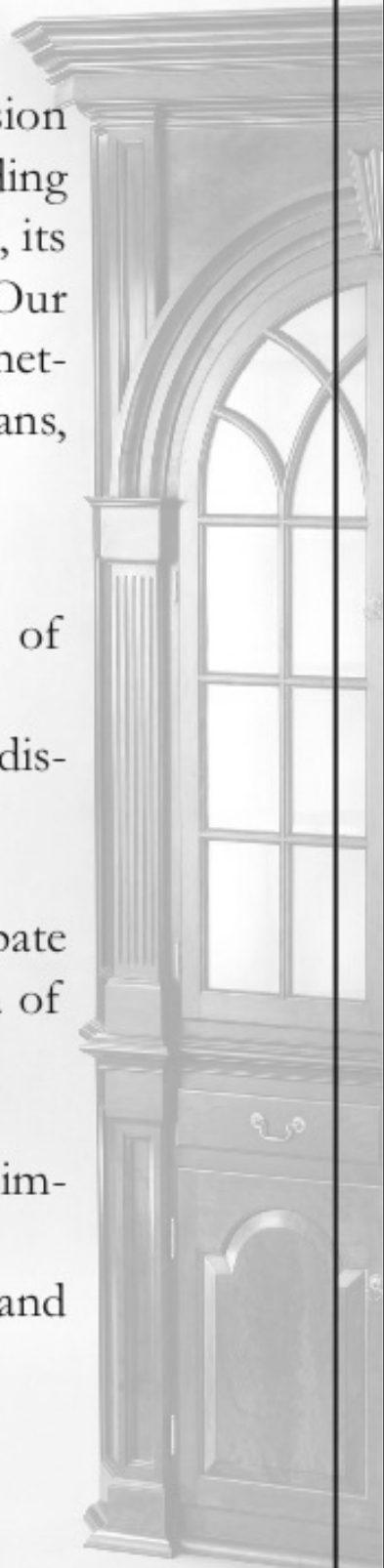
Members of SAPFM enjoy:

- *American Period Furniture*, the annual journal of SAPFM
- an online gallery where member work is displayed
- our quarterly newsletter, *Period Furniture*
- an online forum to post questions and participate in discussions and access to the Member Area of the SAPFM website
- participation in regional chapter events
- opportunities to network with others having similar interests
- eligibility to register for SAPFM conferences and exhibitions.

Learn more about
SAPFM and become
a member today at
www.sapfm.org!



*Society of American
Period Furniture Makers*



No. 1601

Michael Nesnidal
2082 Hackberry Lane
Shakopee, MN 55379
(952) 445-1667
mness4@yahoo.com

I am a self-taught occasional weekend woodworker with an addiction to cherry, walnut, and power tools. In my day job, I manage a Research and Development group at UTC Aerospace Systems in Burnsville. I have a PhD in engineering and I've nearly completed my MBA at the University of Saint Thomas.

Madeline's Pencil Post Bed

This piece was made for my 10-year-old daughter, Madeline, her children, and their children. I hunted long and hard for the right wood for the headboard. Although it is the only piece from a different log, the tones match very well and the figure was worth the effort.



Technical Details:

Materials: Cherry.

Finish: Maloof finish.

Dimensions: 65" (w) x 79" (h) x 85" (d)

Price: Not For Sale

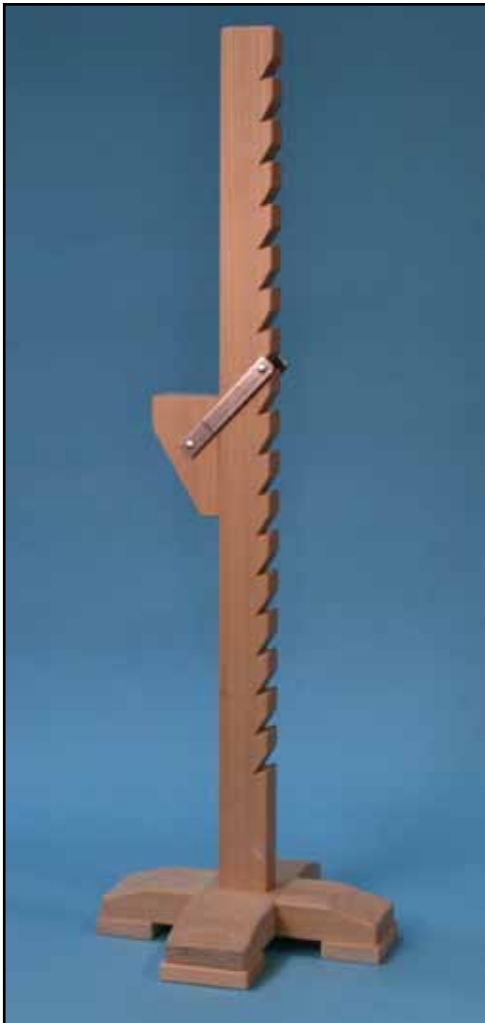
No. 1602

Tom Caspar
3420 20th Ave S
Minneapolis, MN 55407
(612) 518-0434
tcaspar1910@gmail.com

Tom Caspar has been a professional furnituremaker, writer and teacher for over 35 years. He recently retired as editor of *American Woodworker* and *Woodwork* magazines. Tom has taught *The Unplugged Woodshop*, an introductory course on hand tools, for 25 years at Woodcraft Supply in Bloomington, and at The Center for Furniture Craftsmanship, in Rockport, Maine.

Pair of Jacks

This stand is used to support a board, door or any object while working at the bench. It's called a "board jack" or a "bench slave." This jack is a close copy of the one I used as an apprentice many years ago at Erickson Interiors, here in Minneapolis. Years ago, making one of these stands must have been a good test of a young journeyman's skill. Today, I teach students how to make this stand in the follow-up class to *The Unplugged Woodshop*, my basic course on learning how to use hand tools. I made both jacks from one piece of 10/4 walnut that came from the Erickson shop. One end of the plank was cut near a branch. I used this crotch wood to make the board supports.



Technical Details:

Materials: Walnut and steel.

Finish: Oil/varnish blend.

Dimensions: 11" (w) x 32" (h) x 11" (d)

Price: \$350 for one; the other is not for sale.

No. 1603

Jason Holtz
3307 Snelling Ave South
Minneapolis, MN 55406
(612) 432-2765
jason@jholtz.com

I am a third generation craftsman. I have been designing and building furniture full time since 1998. I began pursuing my interest in furniture design and construction while a student studying pre-architecture. I ended up in the wood shop for a design class, and I've been there ever since. I left school and embraced a different educational path as an apprentice with chair maker Jeff Miller in Chicago. I spent three years there in his shop, and only left to make room for somebody new.

Elm Burl 35

This table began as an orange stripe spray painted around my neighbors majestic elm tree. Besides the sheer size of this 60"+ diameter tree, the fact that it was covered in burl made it even more attractive. I arranged to be there on the removal day, and the tree service let me select the pieces I wanted. I had one log sawn into slabs, and the rest was for turning. I am drawn to the odd and discarded trees for the unique character hidden inside. This one paid off big.

Technical Details:

Materials: Elm and walnut.

Finish: Lacquer.

Dimensions: 28" (w) x 17" (h) x 42" (d)

Price: Please Inquire.

No. 1604

Matthew Cremona
3505 Admiral Ln
Brooklyn Center, MN
55429
(262) 498-4271
cremona.matt@gmail.com

Matt Cremona is a full time woodworker who produces videos about woodworking and milling lumber. His furniture projects span the full woodworking process from tree to finish. When he's not toting around his chainsaw, he's in front of the camera teaching and inspiring woodworkers to challenge themselves through his online videos. His own designs have a contemporary feel, but Matt also enjoys building period furniture with his own flair. Matt can be seen every week on his shop update posted on his YouTube channel and can heard as a co-host of the weekly Wood Talk Podcast.

Curved Walnut Sofa Table



“How do I execute this design in solid wood?” was what I had to ask myself when I first approached this design. The design itself doesn't utilize traditional and effective table structure - it is not legs joined by aprons therefore all of the components need to be structural and work together to allow for the movement of the solid wood. At the core, this table takes advantage of the breadboard end but instead of being used to keep a panel flat, I've used joinery on the breadboard itself to join the panels to the legs. The sub-top joins to the legs with dovetails and the shelves join to the legs with twin tenons. The height of the piece and the natural opening at the top give it a majestic look. I have a reverence for wood!



Technical Details:

Materials: Walnut, Ash & Cherry.

Finish: Wiping Varnish.

Dimensions: 46" (w) x 35.5" (h) x 16" (d)

Price: Not For Sale

No. 1605

R

Richard Tendick
17760 Jaguar Path
Lakeville, MN 55044-9674
(952) 435-6011
rctendick@hotmail.com

I started my woodworking in my father's shop, took woodworking in high school and graduated from college with a degree in Industrial Education. After teaching woodworking and drafting for two years, I worked as an engineer for a paper converting company for 27 years. While working as an engineer, I was making patterns for casting iron parts to keep old machines running, building furniture and carving. After retirement, I worked as a contractor for several years and wrote articles for a leading woodworking magazine.

Lady Slipper Lamp

Lamps are a functional item that seem to be designed to disappear into the background. I have attempted to combine functionality and artwork into a single piece. The carved Lady Slipper flower, my wife's favorite flower, draws the eye to the lamp making the lamp stand out from the background.



Technical Details:

Materials: Walnut.

Finish: Oil and varnish.

Dimensions: 6" (w) x 30" (h) x 5" (d)

Price: Please Inquire.

No. 1606

R

Richard Tendick
17760 Jaguar Path
Lakeville, MN 55044-9674
(952) 435-6011
rctendick@hotmail.com

I started my woodworking in my father's shop, took woodworking in high school and graduated from college with a degree in Industrial Education. After teaching woodworking and drafting for two years, I worked as an engineer for a paper converting company for 27 years. While working as an engineer, I was making patterns for casting iron parts to keep old machines running, building furniture and carving. After retirement, I worked as a contractor for several years and wrote articles for a leading woodworking magazine.

Maple Vase

A vase is often an unobtrusive holder of something that is supposed to draw the eye. When my wife wanted me to make her a vase, she said she wanted a unique design, one that was the center of attention. The body of the vase is lightly dyed and the carved lip is left natural to provide an accent.



Technical Details:

Materials: Maple.

Finish: Shellac.

Dimensions: 5" (w) x 8" (h) x 5" (d)

Price: Not For Sale.

No. 1607

Mike Hipps, Jr.
15512 Almond Ln
Eden Prairie, MN 55347-2554
(952) 949-3589
mandchipp@comcast.net

Mike Hipps, a retired musician, is largely self-taught as a woodworker. He likes to build furniture and small items, such as boxes. He recently completed a full altar set for his church.



Greene And Greene Frame For Fishing Ad.

This piece combines two of my interests, woodworking and fly fishing. After determining how to make the images visible from both sides, I needed to come up with a design that was appropriate to the period. After a visit to the Gamble House in Pasadena, I settled on Greene and Greene. The flies, which might well have been used by the fishermen in the pictures, are Quill Gordon, Royal Coachman, and Light Cahill. Matting done by Dean Galleries.



Technical Details:

Materials: Cherry and Ebony.

Finish: Oil, shellac and wax.

Dimensions: 12" (w) x 14" (h) x 4" (d)

Price: Not For Sale

No. 1608

Mike Hipps, Jr.
15512 Almond Ln
Eden Prairie, MN 55347-2554
(952) 949-3589
mandchippy@comcast.net

Mike Hipps, a retired musician, is largely self-taught as a woodworker. He likes to build furniture and small items, such as boxes. He recently completed a full altar set for his church.

Walnut Bowl

The piece of walnut from which this bowl was turned had lain in a southern Minnesota farmyard until rescued by a member of the farm family, and given to me. Within this simple form, I tried to achieve a certain elegance, while allowing the beauty of the wood to shine through.



Technical Details:

Materials: Walnut.

Finish: Behlin's Bowl Finish.

Dimensions: 7" (w) x 2.5" (h) x 7" (d)

Price: Not For Sale

No. 1609

Ed Neu
7344 27th St. S.E.
Buffalo, Mn 55313
(763) 477-5027
(612) 840-6732
ed@MapleRockWoodWorks.com

I am an award-winning designer and builder of custom and reproduction furniture, and wooden treasures that come in many shapes and sizes that fulfill many purposes. I work from my one-man shop in rural Buffalo, MN.

Shaker Chimney Cupboard

This Chimney Cupboard is a study in the key design elements that make a piece of furniture “Shaker”.

The most prominent features are the flat panel doors and the frame and panel back. The use of classic, refined, “Shaker” knobs is an unmistakable mark of this traditional style of furniture. The door latches are classic Shaker. The understated design of the crown molding at the top was used to give their pieces the feeling of reaching to the heavens.

Less often recognized details are the proportions used in Shaker case pieces. There are simple geometric proportions that dominate the design of Shaker casework. These are the ratios of 1:1, 1:2, 1:3, 2:3 and 3:4 - all prominent in this piece. Even the placement of the knobs on the doors and drawers conforms to these common proportions.

Can you find examples of these simple design ratios on this piece?



Technical Details:

Materials: Cherry and pine.

Finish: Oil varnish, shellac and wax.

Dimensions: 16” (w) x 73” (h) x 12” (d)

Price: Please Inquire.

No. 1610

Steve Robb
5141 Sheridan Ave S
Minneapolis, MN 55410
(612) 719-1056
steve@dbz.net

Working with wood has been an interest and hobby for most of my life, along with sailing, old cars, and dogs. Recently, an interest in antique clocks and their role in maritime history intersected with my woodworking hobby. This resulted in the discovery of a number of talented wooden clockmakers and their designs. This is the 5th wooden clock that I've built and my first submission to Northern Woods

Wooden Clock with Epicyclic Gearing

Built entirely by hand, this ingenious mantle clock design was originally invented in the early 1800's by William Strutt. My interpretation of Strutt's design was inspired by plans from Clayton Boyer, however early on I decided to build it at 2/3rd's scale. Its unusual epicyclic gearing creates a great amount of movement within the clock and once wound, it will run for approximately 40 hours.



Technical Details:

Materials: Cherry, bubinga, purpleheart, birdseye maple & bloodheart.

Finish: Shellac and wax.

Dimensions: 13" (w) x 13" (h) x 8" (d)

Price: Not For Sale

No. 1611

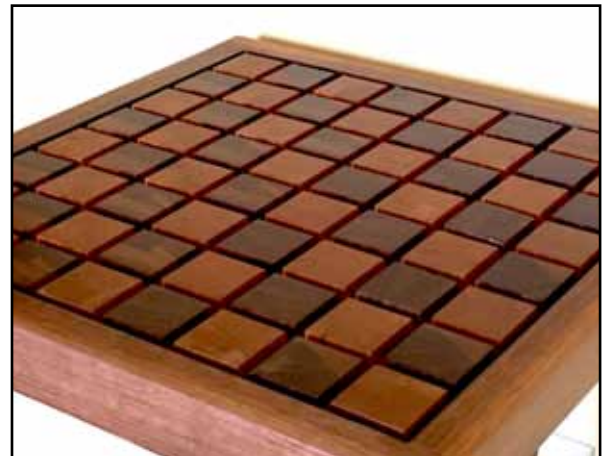
Tim Mauseth
2815 Rhode Island Ave S
St. Louis Park, MN 55426
tim.sj.mauseth@gmail.com

Desk Jockey by day and woodworker by night, Tim is a meticulous craftsman. He rediscovered his passion for building 4 years ago while sifting through tools as he cleaned out his parents' basement. Since then, he has been picking up woodworking skills and seeking out knowledge wherever he can find it. Tim has an appreciation for beautifully designed solid wood furniture made to last for generations.

Checkmate

The goal of this project was to design and build a unique Chess Table that would function as both a timeless end table and a chessboard. I wanted to emphasize the use of traditional joinery as the centerpiece of the design and feature the joinery as a structural component. The through mortise and tenons provide terrific strength, while enhancing the design by doubling as two of the playing squares. I also desired a 3-dimensional look for the playing board, inviting anyone who sees it to come and play a game of chess.

I understand chess is a game of patience, thought, and strategy. I was able to summon all of these characteristics to make this project a reality. Now I guess I have to learn how to play the game.



Technical Details:

Materials: Black walnut and cherry.

Finish: Danish Oil.

Dimensions: 16" (w) x 24.5" (h) x 16" (d)

Price: Not For Sale.

No. 1612

Tim Mauseth
2815 Rhode Island Ave S
St. Louis Park, MN 55426
tim.sj.mauseth@gmail.com

Desk Jockey by day and woodworker by night, Tim is a meticulous craftsman. He rediscovered his passion for building 4 years ago while sifting through tools as he cleaned out his parents' basement. Since then, he has been picking up woodworking skills and seeking out knowledge wherever he can find it. Tim has an appreciation for beautifully designed solid wood furniture made to last for generations.

The Double Helix C-Table

This one of a kind C-Table combines traditional joinery, through wedged mortise and tenons, with an organic flair in design. The table is designed to conveniently sit alongside a sofa or chair. This project evolved from a simple "X" leg style to a more organic double helix like form. To obtain the desired look, I had to learn a couple of new skills: building mock-ups and carving.

The first mock-up was made of clay. The second mock-up was at ½ scale, made from poplar, and incorporated my first experience with carving. Once I was satisfied with the dimensions and comfortable with the carving technique, I moved on to the real thing.

My practice paid off and I am very pleased with the results.



Technical Details:

Materials: Cherry & walnut.

Finish: Danish oil & wax.

Dimensions: 14" (w) x 26" (h) x 14" (d)

Price: Not For Sale.

No. 1613

David A. Lane
4648 Aldrich Ave S
Minneapolis, MN 55419
(612) 822-6362
lanemnwg@yahoo.com

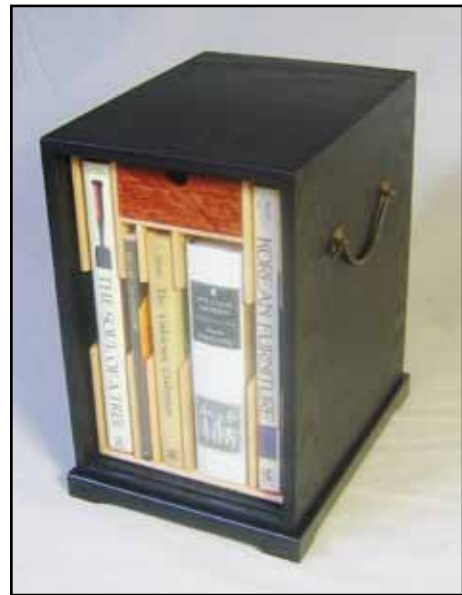
David Lane is a retired librarian who has been woodworking since the early 1990s. He enjoys working primarily with hand tools and recently started lessons in blacksmithing in hopes of making his own forged hardware for chests and boxes.

The Masters' Mungap

In researching woodworker George Nakashima I learned of his connection to Arts & Crafts master William Morris, to his lifelong friend artist Ben Shahn, to Japanese scholar Soetsu Yanagi, and Yanagi's admiration for Korean crafts. I built this book chest to symbolically gather together these masters.

The design is based on Nakashima's 1964 "Kornblut" case. The door panel is based on a Korean "mungap" (document box) from the Weisman Museum. The door lifts up and out and is locked by a sliding lever from the back of the chest. The five books are: a signed first edition of Nakashima's autobiography, a Nakashima exhibition catalog from the library of Ben Shahn; a first edition of Yanagi's "The Unknown Craftsman"; a signed copy of "William Morris: A Life for Our Time"; and "Korean Furniture: Elegance and Tradition" from the Weisman collection.

The escutcheon design is the Korean symbol for "double happiness."



Technical Details:

Materials: Ebonized oak, bubinga and Maple.

Homemade brass hardware.

Finish: Oil/poly.

Dimensions: 10" (w) x 15" (h) x 12" (d)

Price: Not For Sale

No. 1614

David A. Lane
4648 Aldrich Ave S
Minneapolis, MN 55419
(612) 822-6362
lanemnwg@yahoo.com

David Lane is a retired librarian who has been woodworking since the early 1990s. He enjoys working primarily with hand tools and recently started lessons in blacksmithing in hopes of making his own forged hardware for chests and boxes.



Big Sis - Little Bro Box Set

My older sister had been asking me to make her a box for some time. This fall I finally got around to it. I had enough wood for two boxes and decided to make a second smaller box as a gift for someone else; however, after dovetailing each box I happened to put them down together and they made a perfect set! So I built a tray for them to sit side by side. The most fun is that, since both boxes come from the same three boards, they are genetically related just like my sister and me! Love to think I'd thought of that ahead of time!



Technical Details:

Materials: Walnut, zelkova & paulownia.

Brass magnet latches are homemade.

Finish: Oil/poly.

Dimensions: 20" (w) x 4"(h) x 7" (d)

Price: Not For Sale.

No. 1615

Dale Johnson
5993 Ambassador Blvd.
St. Francis, MN 55070
(763) 439-6651
Dale.Johnson@anoka.k12.mn.us
dalejohnsonfurniture.com

From a one man shop, to engineer and production manager to teacher, woodworking has been my only vocation. Call it passion or life style it's a big part of what defines me. I am intrigued by new techniques and styles letting my imagination and interests take me where they may. The search for unique material is a challenge in the mid-west, an aspect I especially enjoy. The freedom to design and the confidence that my work is enjoyed and respected brings all the joy one could ask for in a career.

Chestnut Table

A small table intended to sit between two easy chairs. The American Chestnut lumber hails from Houston County, Minnesota. It is estimated that the Chestnut tree once comprised one in four trees in the eastern US. By the 1940's it had disappeared from the American landscape as the "Chestnut Blight" traveled west from New York state to the Midwest. Small pockets of the tree survived outside the trees normal range in Wisconsin and Minnesota. I have heard and read about the chestnut blight all of my life so I was very surprised when a local sawyer had a small log from a wind damaged tree available. I may never see or work with Chestnut again but will say it is a unique and worthy material. The drawers are quarter sawn White Oak which I thought fit the thirties era as the Chestnut disappeared.



Technical Details:

Materials: American Chestnut.

Finish: Oil and Varnish.

Dimensions: 28" (w) x 24" (h) x 26" (h)

Price: Please Inquire.

No. 1616

Scott Horne
2514 NE 4th Street
Minneapolis, MN 55418
(612) 782-9967
shorne@bitstream.net

Chair maker in NE Minneapolis.

Fan Back Windsor

Revival of c1790 Fan Back originally made by Samuel Tuck.

Technical Details:

Materials: Cherry.

Finish: Tung Oil.

Dimensions: 18" (w) x 37" (h) x 17" (d)

Price: \$750.

No. 1617

Craig Jentz
5217 Logan Avenue South
Minneapolis, MN 55419
(651) 249-5787
cjjentz@gmail.com

Craig has been an avid woodworker for over 30 years. This is his creative release and counterpoint to his corporate world professional life. He lives in southwest Minneapolis with his wife Jean and a well equipped shop which is crammed into the basement. From a style perspective Craig likes flowing curves and enjoys the occasional whimsical piece.

Grandpas' 10 Horse

I grew up spending summers at my grandfathers cottage (Wisconsin word for cabin). Much time was spent fishing and drinking around in his 14' Thompson wooden fishing boat with a 1955 Johnson 10 horse motor. I have many fond memories of the 50's styling, sound and smell of this motor. I build this semi-functional end table in honor of my grandpa Fred and the summers we spent together. The top opens for book storage and the front tiller pulls out as a drink holder - if grandpa was still around there'd be a Blatz on it.



Technical Details:

Materials: Basswood.

Finish: Spray-toned enamel with poly overlay.

Dimensions: 14" (w) x 48" (h) x 24" (d)

Price: Not for sale.

No. 1618

Craig Jentz
5217 Logan Avenue South
Minneapolis, MN 55419
(651) 249-5787
cjjentz@gmail.com

Craig has been an avid woodworker for over 30 years. This is his creative release and counterpoint to his corporate world professional life. He lives in southwest Minneapolis with his wife Jean and a well equipped shop which is crammed into the basement. From a style perspective Craig likes flowing curves and enjoys the occasional whimsical piece.

Bed

My two sons are 24 and 22. For their college graduation presents I made each of them a full bedroom set. This bed is for the younger son who graduates this May. The accompanying dresser and night stands are still under construction.

Technical Details:

Materials: Walnut and maple.

Finish: Oil, rubbing varnish and poly.

Dimensions: 66" (w) x 43" (h) x 84" (d)

Price: Not For Sale.

No. 1619

Trina Hendrickson
2101 Cardinal Drive
Shakopee, MN 55379
(952) 445-0492
(952) 649-7239
201146@shakopeeschools.org

I grew up in a family that enjoys woodworking. I started to pursue woodworking in seventh grade and learned many new techniques throughout eighth and ninth grade. After competing through 4-H at various levels I decided to try a different kind of project. Combining old techniques with new technologies, I learned a lot building my end table. This is my first attempt at inlays, pegging dowels, and using no metal fasteners. I enjoyed learning about how important it is to understand different techniques to turn out a craftsman style project.

Craftsmen Influence End Table

My inspiration is from a place that I hold dear to my heart, my Grandpa's cabin in the Northwoods of Minnesota. The color of Alder reminds me of the tints of the sun gleaming in the cabin. The walnut reminds me of the intricacies of the patterns of Diamond Willow. This end table brings me thoughts of Craftsman, from a bygone era working during the long Minnesota nights.

In the boundary waters, I feel that I can do anything the guys can do. When I look at the table I dream of being by the fire working on my craft with the craftsman of old, telling me stories and letting me be me and showing all that even a girl can do woodworking.



Technical Details:

Materials: Walnut dowels, western red alder, American black walnut, rock maple 3/4" Douglas fir plywood and masonite.

Finish: Rockler Gel Coat / three coats.

Dimensions: 19.0625" (w) x 24.5625" (h) x 13.125" (d)

Price: Not for sale.

No. 1620

Tom Igielski
7194 Waterstone Lane
Woodbury, MN 55125
(651) 592-0409
tpigielski@gmail.com

I am a semi-retired IT consultant that has taken up woodworking as a hobby. I am mostly self taught, and have enjoyed building various pieces of functional furniture for our home / family over the years. Within the last 2 years, I joined the MN Woodworkers Guild, and have started to take this craft a lot more seriously. I really enjoy taking plans and potentially modifying them to better suit my purpose, to create a nice piece of furniture to show and enjoy. At some time in the future, I hope to begin designing my own pieces of furniture.

James Krenov Style Display Cabinet w/Stand

This cabinet is an attempt to create something in a classic Krenov design. The cabinet includes such features as hand-made door pulls, custom shelf supports, hand-carved friction catches and door stops, doors that are rabbeted in the center so they “nestle” together, and are pulled back a bit from the sides of the cabinet to create a slight “shadow” effect. The back of the cabinet is spalted maple to add some depth to the box. The stand is of my own design with accentuating / complementing woods.



Technical Details:

Materials: Black Walnut, Sapele, White Ash, Spalted Maple, Curly Ash.

Finish: Case: Danish Oil & wax; Stand: Danish Oil & Lacquer

Dimensions: 21” (w) x 61” (h) x 10.5” (d)

Price: Not For Sale

No. 1621

Joe Morgan
11341 County 14
Park Rapids, MN 56470
Jm4finefurniture@yahoo.com

I have always been a creative builder. As a child I would spend countless hours playing with Legos, building anything my imagination could come up with. I am a self taught woodworker. Gaining much of my experience through trial and error and having an anything is possible attitude. My woodworking career has evolved to focus on the artistic side of woodworking. Learning and creating ways to include marquetry, inlays and the use of other materials in my work, really excites me.

Opportunist

My inspiration for this cabinet came from my experience of growing up on a farm. It always caught my attention when I would walk inside an old out building and see trees determined to grow inside even though there was no direct sunlight. The marquetry motif are spring blossoms as they start growing out of the cabinet. There are over 1,050 pieces of marquetry used to build this cabinet.



Technical Details:

Materials: Mahogany, Jatoba, White Ash, Marquetry.

Finish: Lacquer.

Dimensions: 22" (w) x 50" (h) x 16" (d)

Price: Please Inquire.

No. 1622

Joe Morgan
11341 County 14
Park Rapids, MN 56470
Jm4finefurniture@yahoo.com

I have always been a creative builder. As a child I would spend countless hours playing with Legos, building anything my imagination could come up with. I am a self taught woodworker. Gaining much of my experience through trial and error and having an anything is possible attitude. My woodworking career has evolved to focus on the artistic side of woodworking. Learning and creating ways to include marquetry, inlays and the use of other materials in my work, really excites me.

Wine Cabinet

It just blew my mind when I saw trompe l'oeil marquetry for the first time. After studying the work of modern artists and the exceptional craftsmanship of the furniture makers from the late 1700's, I was inspired to build this cabinet. I typically cut out marquetry where the motif and background are cut out at the same time. To get the detail that I was looking for in the wine glass and bottle. I used the same principles of the double bevel technique, only I kept the saw blade at a 90 degree angle to the table. I also used commercially cut veneer and had to develop some methods to support such thin veneer while cutting it on the scroll saw.



Technical Details:

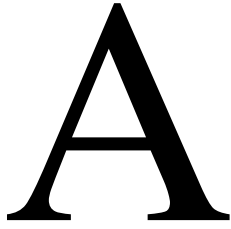
Materials: Mahogany, Blisterd Claro Walnut, Quilted Maple, Ebonized Wood, Marquetry, Stone, Patinated Silver Leaf

Finish: Lacquer.

Dimensions: 34" (w) x 62" (h) x 23" (d)

Price: Please Inquire.

No. 1623



Art Beseman
13623 Elkwood Dr.
Apple Valley, MN 55124
(952) 393-4271
artbeseman@gmail.com

I've been into woodworking for about 50 years. I do occasional projects instead of continuous work. But I love working with wood.

Tea Service Sideboard Table

This is a gift for my ex. She has moved up north to a new house. She is a massage therapist and a master gardener. She is very holistic and loves tea. So I saw this plan in Popular Woodworking, and being a Greene & Greene - Arts and Craft fan, I modified the design to "add" a little more Asian look to it. The possible design choices; e.g. - cloud lifts, ebony pegs, etc. had to be considered for their addition to the overall design and not to overpower it. There is a tendency to over do the ebony pegs, or to add the wrong cloud lifts.

Technical Details:

Materials: Paduk, Oak and Ebony.

Finish: Danish Oil.

Dimensions: " (w) x 36" (h) x 12" (d)

Price: Not For Sale.

No. 1624

Paul Michaelson
10700 Kell Ave S
Bloomington, MN 55437
(952) 884-7759
PDMICHAELSON@juno.com

I have been woodworking as a hobby for many 50 years. I entered this show two years for the first time. It has been fun to see the great artistry of many woodworkers, and I enjoy each year's entries.

Lighthouse

The lighthouse is a historical landmark that is recognizable worldwide from both ocean and lake shores. I got the idea for this project when I was on vacation along the Oregon coastline, and picked up the myrtle wood there. Each lighthouse is unique and many have incorporated creative designs for the finial (the top). The finial I chose is made of cocobolo. Of course, no lighthouse is complete without a light. I used battery-powered LEDs operated with electronics to create the rotating or flashing light effect.



Technical Details:

Materials: The tower is spalted maple, the base is myrtle wood with bark, and finial is cocobolo.

Finish: Lacquer.

Dimensions: 15" (w) x 18" (h) x 9" (d)

Price: Not For Sale

No. 1625

Cecilia Schiller
1714 Ashland Ave.
Saint Paul, MN 55104
(651) 757-8309
cecilia@ceciliaschiller.com

Cecilia Schiller has been carving wood for over twenty years, woodworking for almost as long and making her interactive kinetic creations (automata) since 2009. She has received numerous grants and awards for her innovative work. Visit her at www.CeciliaSchiller.com

Skiing The Birkebeiner

I enjoy trying to recreate human movement in my carved figures and in the land of snow and ice, this seemed a must make automaton. The frame was inspired by timber framed structures in the Northern Minnesota and I thought it fit well with the theme. I also like how it reveals the gears which can be just as interesting to watch as the skier is.



Technical Details:

Materials: Oak frame, variety of woods for gears, basswood fro top and carved figure, leather and felt.

Finish: Oil, milk paint and acrylic paints.

Dimensions: 10'' (w) x 18'' (h) x 12'' (d)

Price: \$1850.

No. 1626

Cecilia Schiller
1714 Ashland Ave.
Saint Paul, MN 55104
(651) 757-8309
cecilia@ceciliaschiller.com

Cecilia Schiller has been carving wood for over twenty years, woodworking for almost as long and making her interactive kinetic creations (automata) since 2009. She has received numerous grants and awards for her innovative work. Visit her at www.CeciliaSchiller.com

Sunny Daze

A few years ago guild member Roy Wervey approached me about his willingness to work collaboratively with me on a kinetic piece. This project seemed like the perfect opportunity, it's a tabletop version of a mini-golf course hole I am making for Cancan Wonderland (opening this summer: <http://cancanwonderland.com>). Serendipitously Roy's neighbor, Jim Anderson, has a CNC machine and cut some of the forms for us. It's been fruitful and enjoyable combining our skills and knowledge to create this crazy contraption. We've built three versions: Riding a Ray of Sunshine, Riding a Wave, and Sunny Daze which will find it's home soon in the reception area of the Motion Clinic at Gillette Hospital where Roy works.

Technical Details:

Materials: Cherry, Curly Maple, Baltic Birch Plywood, Basswood, Acrylic tubes and Lexan.

Finish: Milk paint, wood dyes, shellac and oil.

Dimensions: 30" (w) x 54" (h) x 18" (d)

Price: Please Inquire.

No. 1627

Timothy J. Gorman
4200 Washburn Ave N
Minneapolis, MN 55412
(612) 522-7091
timothy.gorman@usbank.com

Tim Gorman received his BFA in Industrial Design at the University of Michigan, Ann Arbor, in 1986 and his MFA in Industrial Design at the University of Kansas, Lawrence. In 2000, he built his first shop in North Minneapolis, has been creating new furniture and turnings since. His work has been featured in a number of national publications.

Columnar Cabinet

The genesis of this piece arose from an effort to re-purpose an early, failed attempt at a bubinga-veneered table top that had been sitting in my shop a number of years. It was too small to be used for another table, but was just the right proportions for a small cabinet. It had been a while since I had built a cabinet and I wanted it to be rather a show-stopping piece, so I endeavored to create something with very few flat surfaces, made heavy use of figured veneers, and was technically challenging. It was designed using 3D modeling software and constructed over the course of a year. I wanted it to have the solidity of a classical column but yet look like it was floating above the ground. It is designed for a variety of uses and its proportions allow it to contain a 32" television.

Technical Details:

Materials: Birch plywood, maple, bubinga, ebony, holly, brass, nickel, aluminum and glass.

Finish: Conversion varnish.

Dimensions: 42" (w) x 48" (h) x 26" (d)

Price: Not For Sale.

No. 1628

John Zachman
6970 Mariann Dr
Eden Prairie, MN 55346
(952) 934-5543
john.c.zachman@gmail.com

I've been a woodworking hobbyist for 20 years, working out of a shop in the lower level of my Eden Prairie home. Thus far I have managed to produce several pieces of furniture each year.

Arts & Crafts Nightstand

The piece is a simple nightstand with one upper drawer and a lower cupboard with shelf. It also contains a hidden compartment which will present itself if properly activated. The piece is my own version of a similar Stickley Display Cabinet.



Technical Details:

Materials: Quartersawn White Oak.

Finish: Varnish.

Dimensions: 20" (w) x 29" (h) x 17" (d)

Price: Not For Sale.

No. 1629

Karl Heal
1602 Berkeley
St. Paul, MN 55105
(651) 698-2036
karl.heal@toro.com

I have enjoyed woodworking as a hobby for many years. I have designed and built several pieces of furniture for our home, as well as built in cabinets and kitchen cabinets. I enjoy craftsman style furniture and Greene and Greene design elements in my projects.

Greene And Greene Style Morris Chair

Many years ago I built a replica of a Stickley Morris chair. The Stickley chair takes up a lot of space in our small living room. I set out to design a smaller version that would allow the foot stool to be stored under the chair.

Last fall I visited a professional woodworker, Tom Dolese of Terra Firma Designs. Tom gave me a demonstration of his horizontal router, and loose tenon joinery.

I used Tom's basic dimensions for the base of the chair, adding design elements found in Greene and Greene furniture, and the arm design found in the Stickley Morris chair. The foot stool is designed to slide under the chair for storage when not in use.

The result is a visually pleasing, comfortable chair that doesn't take up huge footprint in my living room.



Technical Details:

Materials: White Oak and Ebony.

Finish: Polyurethane over fumed oak.

Dimensions: 29" (w) x 42" (h) x 33" (d)

Price: Please inquire.

No. 1630

Robert Cuthill
5919 Centerville Rd #104
North Oaks, MN 55127
(651) 762-6510
(952) 221-1787
cutyow@msn.com

I am retired living, with Carolyn my wife, of 61 years, in Waverly Gardens a Presbyterian Homes facility in North Oaks, MN. Woodworking has been a hobby since I was a young boy. In Buffalo, NY where I spent my early years we had wood shop beginning in the fifth grade. A group of us residents have donated our equipment to establish the Waverly Gardens Wood Shop. With my design and leadership the group built the chest.

Bedroom Chest Match

As a request of friends in our Retirement Community, this Bedroom Chest was designed to meet particular needs of a 100 year old man while matching existing furniture both in style and finish. None of us being Professionals the design and build were a significant challenge. It was our biggest project to date in 2014. We presented the chest to Harry and Myrna Camp at breakfast on Valentine's Day. They were delighted with our production. Today they still invite people in to see our handy work.

The big pay off was how it brought our workshop team together. We have grown from 6 to 16 workers in five years. We do a lot of repairs and build to meet particular needs. One annual project is making toys for the "Christmas Child" project. Each year we have made over 150 tractors, cars, trucks and puzzles.



Technical Details:

Materials: Red Oak and Red Oak MDF Plywood .

Finish: Polyurethane.

Dimensions: 72" (w) x 24" (h) x 18" (d)

Price: Not For Sale.

No. 1631

M

ike Loeffler
4313 4th Ave South
Minneapolis, MN 55409
mloef040@gmail.com

Mike Loeffler is a green wood worker based in Minneapolis. Inspired by his last name (an occupational name given to spoon carvers) Mike began his explorations in woodworking with spoons. His current work focuses on creating contemporary versions of Scandinavian ale birds, which are hand carved ceremonial drinking vessels. He believes in promoting the use and appreciation of everyday wooden objects made by local people, using local materials.

Loon Bowl

This piece is very rooted in this place. I work primarily with green wood which gives me the opportunity to go out into the forest and harvest appropriate materials. This bowl is inspired by traditional Scandinavian ölglas, or ale geese, which are elaborately carved wooden bird-shaped ceremonial drinking vessels. Many of the traditional examples were fashioned after geese, hens, or other generic bird forms. The loon is such an iconic resident of Minnesota and has a certain symbolic significance to many of us. As a ceremonial piece that is intended to be used it allows us to celebrate our physical environment, and folklore and tells this story through wood.



Technical Details:

Materials: Quaking aspen.

Finish: Milk paint and linseed oil.

Dimensions: 14" (w) x 5.5" (h) x 6.5 (d)

Price: \$500.



No. 1632

Chris Albee
15513 Park Terrace Dr
Eden Prairie, MN 55346
(651) 214-1295
calbee05@yahoo.com

Chris is a woodworker who first got into the hobby by making little garages for Hot Wheels out of scraps in his grandpa's shop during his elementary school days. Post college, he started to dive into woodworking as a hobby while building custom computer cases, and items for around the house. His general focus is on hand tools; specifically restored antiques.

Hanging In The Balance

Hanging in the Balance was one of five winners in a computer case design contest where the winners were then given the hardware and opportunity to build their designed case. It is a fully functioning computer, comparable to a mid-range laptop. The inspiration came from the aesthetic and simplicity of a balancing clock. The solid wood base and arm assembly was planned down to thickness by hand, cut to shape with handsaws and scroll saw, and the joinery cut by hand. The final form was refined through the use of hand planes, files, and sand paper. Quilted Sapele veneer was applied by hammer veneering using hot hide glue and everything was finished with brushed on shellac.



Technical Details:

Materials: Curly Maple, Wenge, Quilted Sapele Veneer, Plywood and Poplar Dowel, Aluminum and Acrylic.

Finish: Shellac, Brushed.

Dimensions: 14" (w) x 10" (h) x 7" (d)

Price: Please Inquire.

No. 1633

John Walkowiak
3452 Humboldt Ave South
Minneapolis, MN 55408-3332
(612) 824-0785
johnwalkowiak@comcast.net

Ilive in Minneapolis and have been making things from wood all my life. My interest in antique furniture led me to antique woodworking tools and I use them in every project. I have made furniture for our home and now have a granddaughter to make things for.

A Sled For Ella

I wanted to make a traditional looking wooden runner sled for my granddaughter. I wanted to incorporate the woods I prefer to work with, hand tool usage, a variety of woodworking techniques and some challenges. The bent parts are ash, and the challenge came from the tight curl of the runners. Rectangular as well as round mortise and tenon joints are used to hold it together, as well as brass screws. The red stain/paint is a color I mixed and I call it Cranberry Sauce. Because that is what I wanted it to look like! Everything is protected by several applications of Minwax Antique Oil. I applied wear strips of HDPE to the runners for abrasion resistance and easier gliding. It pulls with very little resistance. The sled is my design.



Technical Details:

Materials: Ash, maple, walnut, cherry, high density polyethylene.

Finish: Paint/stain, wipe on varnish .

Dimensions: 16" (w) x 16" (h) x 36" (d)

Price: Not For Sale

No. 1634

John Walkowiak
3452 Humboldt Ave South
Minneapolis, MN 55408-3332
(612) 824-0785
johnwalkowiak@comcast.net

Ilive in Minneapolis and have been making things from wood all my life. My interest in antique furniture led me to antique woodworking tools and I use them in every project. I have made furniture for our home and now have a granddaughter to make things for.

A Cradle For Ella

I volunteered to make a cradle for my first Granddaughter. It is a scale model of a yacht lifeboat hanging on its davits. I purchased the plans for it, but they were not very clear – to someone who has never built a boat. It entailed a lot of hand tool work, as each part is mated to the ones next to it. The copper rivets are authentic and were hand hammered. The bottom is painted and the Ash, Walnut, and Cherry interior has a Minwax Antique Oil finish. It was placed next to a 100 gallon aquarium and Ella rocked in it while watching the fish swim by. I am going to build a platform stand for the cradle and install shelves in it so she can use it to display books, toys and stuffed animals. The nameplate was painted by our good friend and a rosemaling expert Ellen Mickels.

Technical Details:

Materials: Ash, walnut and cherry

Finish: Paint, wipe on varnish.

Dimensions: 24” (w) x 50” (h) x 48” (d)

Price: Not For Sale.

No. 1635

S

teven Strandberg
435 University Ave East
St. Paul, MN 55130
(952) 486-2420
Stevenstrandberg@gmail.com

I was born in 1988. I enjoyed drawing pictures as a child. Seeing people's creations come to life has always interested me. I had a flooring job where I researched hardwood flooring and consistently became distracted by YouTube videos of woodworking. In 2015 I left my job and enrolled in a cabinet making class. I'm currently enrolled in a wood finishing, and I'll be graduating from both classes in May 2016. My interests are wood, metal, leather, stones and circuitry. After I graduate I plan on learning metal work, and continuing to gain skills in my areas of interest.

Quarter Sawn Red Oak Wine Rack

Quarter sawn red oak wine rack. Soft close drawer guides. Fits standard size wine bottles and wine glasses.



Technical Details:

Materials: Red oak, soft close drawer guides, antique drawer pull.

Finish: Oil based stain and lacquer.

Dimensions: 27" (w) x 36" (h) x 15" (d)

Price: \$500

No. 1636

Steven Strandberg
435 University Ave East
St. Paul, MN 55130
(952) 486-2420
Stevenstrandberg@gmail.com

I was born in 1988. I enjoyed drawing pictures as a child. Seeing people's creations come to life has always interested me. I had a flooring job where I researched hardwood flooring and consistently became distracted by YouTube videos of woodworking. In 2015 I left my job and enrolled in a cabinet making class. I'm currently enrolled in a wood finishing, and I'll be graduating from both classes in May 2016. My interests are wood, metal, leather, stones and circuitry. After I graduate I plan on learning metal work, and continuing to gain skills in my areas of interest.

Wood Only Folding Knife

This knife folds and locks there is only wood in the construction.

Technical Details:

Materials: Cherry, birch, wenge, bamboo and walnut.

Finish: Mineral oil and shellac.

Dimensions: 6" (w) x 0.5" (h) x 1" (d)

Price: Not For Sale.

No. 1637

Craig Johnson
PO Box 131811
St. Paul, MN 55113-0020
(651) 644-3652
craig@studiotupla.com

My study of furniture making has taken me three times to the Inside Passage School of Fine Cabinetmaking in Roberts Creek, British Columbia, Canada, where I completed study in its Artisan, Craftsman and Journeyman programs. It is there that the teachings of Robert Van Norman and James Krenov allowed me to discover the profound effect a new way of working could have on my approach to this craft. With my wife Carol Rajala Johnson, a handweaver, I founded Studio Tupla, a full-time partnership in fine furniture making and handweaving, where we design and make unique one-of-a-kind pieces for our clients.

Jeffersonian Book Stand

I am grateful to the client who commissioned this piece and who shares it with you today. In 1810, Thomas Jefferson designed a revolving book stand that was made in the joinery at Monticello. Here was an opportunity for a new take on that old invention.

A sapling in the early 1500s, the 330+ year old yellow birch used here was recently reclaimed from the watery depths where it sank after being logged over 150 years ago. The grayish discolorations are evidence of the tree's long, submerged history. The opportunity to connect this old growth wood with the historic Jefferson book stand has been especially rewarding.

Deceptively complex, this piece was a joy to make. Shop sawn veneers of the top panels display the yellow birch plank's lighter sapwood, while the remainder of the piece shows the darker heartwood. Shop made brass brackets attach the main platform to the stand.



Technical Details:

Materials: Yellow birch, bird's eye maple and brass.

Finish: Shellac and beeswax polish.

Dimensions: 13.5" (w) x 16" (h) x 13.5" (d)

Price: Not For Sale; requests to commission a similar piece accepted.

No. 1638

Mark Laub
3750 211th Ln NW
Anoka, MN 55303 - 8851
(612) 210-7793
marklaubstudios@gmail.com

Mark Laub designs and builds functional art furniture. His studio is tucked in the forest on the banks of the scenic Rum River near Minneapolis, Minnesota. Laub believes that inspiration can come from anywhere. He aspires, as William Blake suggests, “to see the world in a grain of sand”. Laub also enjoys music and an “occasional” bottle of wine. When the two are combined, he will endlessly argue endlessly with himself, debating the best music ever written. Today, it continues to be a tie between Chopin’s “Fantasie Impromptu” and Neil Young’s “Like a Hurricane”.

Queen Of The Slipstream

Queen of the Slipstream celebrates the exploration and discovery that true beauty lies within. It was inspired by the revolving door in the Hotel Daniele in Venice Italy, a scarab beetle, Erté fashion clothing, art deco and dahlia coccinias. More inspiration was found when building portions of the piece in Van Morrison’s home recording studio in California.

This walk-about cabinet has no straight lines, and has neither front nor back. It features drawers within drawers and carousels within carousels and a screw driven lift for the top. Things are not as they may first appear.

Thankful acknowledgement goes to Bob Kraby for his skillful assistance in crafting this complex piece.

Technical Details:

Materials: Bastogne walnut, soft maple, patinated copper, moroccan tile, mother of pearl, abalone, art glass, brass.

Finish: Oil, Shellac and Wax.

Dimensions: 58” (w) x 58” (h) x 20” (d)

Price: Not For Sale.

No. 1639

Kenneth Davey
21786 Flint Road
Lake Crystal, MN 56055
(507) 947-3084
cmfkend@gmail.com

I have been building furniture, cabinets, and many other items for 35 years part time and full time. Mechanical drafting was my training after high school. Having grown up in my (carpenter) father's shop I have always been cutting wood and building. I spent several years at the drafting table and set out on my own. I have enjoyed many successes and there is always a new challenge.

Long Awaited Cabinet Upgrade

These are mostly standard cabinets for my kitchen. The show appeal is the door and drawer front used. There is a walnut band on each which has a handle as part of the door/drawer face. I wanted a way to include several types of wood in my own kitchen cabinets. The wood is some of what I have collected mostly from scrounged logs cut into limber. All of the carcasses for the cabinets will be a pretty standard approach with Ash as the main face frame and panel wood. The doors have Ash primarily with a narrow band of other woods in a transition which I have used other times and feel it is a pleasing blend. The colors are enough to add all the needed interest for creativity and the handle (machine carved, router) built into the walnut band becomes a focal point.

Technical Details:

Materials: Ash, honey locust, cherry, walnut, red elm, white oak.

Finish: Polyurethane (water borne) over a thin shellac sealer coat.

Dimensions: 24" (w) x 86" (h) x 24" (d)

Price: Not For Sale.

No. 1640

K

enneth Davey
21786 Flint Road
Lake Crystal, MN 56055
(507) 947-3084
cmfkend@gmail.com

I have been building furniture, cabinets, and many other items for 35 years part time and full time. Mechanical drafting was my training after high school. Having grown up in my (carpenter) father's shop I have always been cutting wood and building. I spent several years at the drafting table and set out on my own. I have enjoyed many successes and there is always a new challenge.

Baby Cradle

My wife asked if I would make a cradle for her sister and her soon to arrive baby . After getting well into this project I decided it would become a family and friends joint use treasure. As you can see it is used. It is 18 years old now, and has been used by at least 9-10 babies. There is a log/scroll of users in holes in the bottom legs. My wife will not let me sell this cradle. Special feature(s) include round pins which allows the cradle to swing while the pins roll (not pivot, its a friction thing) in the stand slots. The cradle can be taken out of the stand and rocked on its own curved base, and there is a locking devise. The stand knocks down for transport, and has the scroll holes as mentioned.

Technical Details:

Materials: Black Walnut.

Finish: Tung Oil.

Dimensions: 46" (w) x 42" (h) x 20" (d)

Price: Not For Sale.



No. 1641

R

Robert Sorenson
4901 Woodlawn Blvd.
Minneapolis, MN 55417
soren001@umn.edu
(612) 729-8509

I am an amateur woodworker and enjoy the challenge of working with wood, building skills and learning elements of design.

Desk Accessories

I made a writing desk out of waterfall Bubinga a few years ago. I had some small leftover pieces and used these to make desk accessories to accompany the desk. These include a letter holder and pencil box along with a few book markers and a coaster. I am now working on a bookcase which will accompany the desk.



Technical Details:

Materials: Bubinga.

Finish: Daley's Teak Oil and Wax.

Dimensions: 10" (w) x 3" (h) x 14" (d)

Price: Not For Sale.

No. 1642

Tim Heil
3800 Gem Lake Road
Gem Lake, MN 55110
tim@heiltruckbrokerage.com
(651) 407-1300

My name is Tim Heil and I have been turning wood since 1967. I enjoy turning and using functional pieces -rolling pins, fishing lures, paint brushes, pool balls, and Windsor chairs to name a few. Crafting unique screwdrivers, awls, and assorted tools is also a special focus. I'm an active member of the Minnesota Woodturners and the American Association of Woodturners, I've demonstrated at The AAW National Symposium, The Utah Woodturners Symposium, The American Craft Council Show, and The AAW Gallery of Wood Art. My work has been featured in American Woodworker, Fine Woodworking, and American Woodturner.

Light My Fire

Each candle stick is turned from a broken ash baseball bat then burned, sanded and sealed with Shellac. The candle stick design was inspired by Rude Osolnik.



Technical Details:

Materials: Ash with brass inserts.

Finish: Scorched then sealed with Shellac.

Dimensions: 2" (w) x 12" (h) x 2" (d)

Price: \$1000.

No. 1643

Dan Berks
1215 45th Ave NE
Columbia Heights,
MN 55421
danberks99@aol.com
(612) 720-1783

I have been an amateur woodworker for many years. The majority of my work has been working on home restoration projects and furniture refinishing. I always had the desire to increase my skills and knowledge regarding furniture design and construction. In September, 2014 I attended a 3 week furniture design and build intensive at the Anderson Ranch in Snowmass, Colorado led by Thomas Hucker. It was the smartest thing I've done for myself.

Demilune Hall Table

This is a Demilune table I designed based on the mid century style of designer Peter Hvidt characterized by the table top 'floating' above the apron and base. I have always been attracted to Demilune tables. They have been crafted through time in many period styles. They draw attention to themselves as they display features of a full size table on a smaller scale and are often accent pieces designed to be noticed. In addition to the floating table top, I wanted to convey a lightness of mass by using only two legs and securing the base to the wall. I designed and constructed most of the table in a design/build class with input from classmates and the instructor.



Technical Details:

Materials: Solid Cherry and Poplar.

Finish: Oil.

Dimensions: 36" (w) x 36" (h) x 12" (d)

Price: Please Inquire.



No. 1644

Charles Kocourek
6330 Arthur St NE
Fridley, MN 55432
charlie@jack-bench.com
(763) 572-3837

Charlie Kocourek is a woodworker living in Fridley, Minnesota. He loved working from a very young age, but was distracted by other things until more recently. Once he rekindled his passion for woodworking he hit the ground running and never looked back!

Charlie is nationally and internationally known in the woodworking community for designing an adjustable height workbench called the Jack Bench. He currently produces woodworking videos for his YouTube channel, Jack Bench Woodworking.

Cookie Table

When a friend of mine asked me to make a coffee table from a walnut slab that she found at a garage sale I jumped at the chance to work with such a great piece of walnut! The slab is special because it is especially thick and because it is a radial slice of the tree. Some people call this a “cookie”.

I wanted something more than just four legs under this slab and I pondered quite a while before deciding on the sculpted base. The base is constructed with staves similar to the way a barrel is constructed, and it is comprised of 114 separate pieces of ash. This project gave me an opportunity to use a variety of techniques. I was especially excited about texturing and finishing the base.

Technical Details:

Materials: Walnut and Ash.

Finish: Polychrome and Varnish.

Dimensions: 41” (w) x 17” (h) x 28” (d)

Price: Please Inquire.

No. 1645

Steven McLoon
1920 Gluek Lane
Roseville, MN 55113
s.c.mcloon@gmail.com
(651) 334-4463

Steve began woodworking in 2007. He has taken numerous courses and workshops taught by some of the top craftsmen in the country. Steve divides his studio time between turning and furniture making. He strives to celebrate the awesome characteristics of natural wood in all his work. His studio is in the Casket Arts Carriage House in northeast Minneapolis. You are invited to visit during his open studio events. Please see his website for details (www.millennium-studio.com).

Greene & Greene Inspired Side Table

The Blacker House was designed by the Greene brothers and built by the Hall brothers in 1907. As was typical of Greene & Greene houses, it included most of the furnishings, also made by the Hall brothers. A chair made for this house, now known as the Blacker House chair, is iconic for Greene & Greene style craftsman furniture. I designed and made this table to accompany two Blacker House-like chairs, which I also am making. Although this table is my original design, each element of the table is represented in the Blacker House chairs. My table is made with sapele wood. It is similar to Honduran mahogany, which was used for the Blacker House chairs. The table was made from two boards. The legs were from an 8/4 rift sawn board, and the rest was from a 4/4 quarter sawn board.



Technical Details:

Materials: Sapele & ebony.

Finish: Oil and Varnish.

Dimensions: 16" (w) x 24" (h) x 23" (d)

Price: \$1900.

No. 1646

S

teven McLoon
1920 Gluek Lane
Roseville, MN 55113
s.c.mcloon@gmail.com
(651) 334-4463

Steve began woodworking in 2007. He has taken numerous courses and workshops taught by some of the top craftsmen in the country. Steve divides his studio time between turning and furniture making. He strives to celebrate the awesome characteristics of natural wood in all his work. His studio is in the Casket Arts Carriage House in northeast Minneapolis. You are invited to visit during his open studio events. Please see his website for details (www.millennium-studio.com).

Platter in Figured Walnut

This platter was turned on a lathe from a plank that included the crotch of a walnut tree. The crotch is where the main tree trunk branched into two trunks. This spectacular piece of wood was given to me by a fellow woodworker. Sometimes less is more, which I hope is the case with this platter. The platter was turned with a simple form, and it was left unembellished so as not to detract from the natural beauty of the figured wood.



Technical Details:

Materials: Walnut.

Finish: Oil and varnish.

Dimensions: 16" (w) x 2" (h) x 16" (d)

Price: \$220

No. 1647

R

rutager West
1602 Hazel St N
St. Paul, MN 55119
rutagerwest1@gmail.com
(651) 774-6794

As a youngster growing up, I was introduced to a wood shop in Jr. High and took a few classes during summer school and in ninth grade. Many years went by after that and then as I was thinking about buying a house, I decided to take woodworking back up to help furnish the place- still haven't made enough furniture, but I'm enjoying the process and especially collecting too many nice tools.

Small Table

This table was a class project from last summer's woodworking vacation and an exercise in hand tool use. All the surfaces have been smoothed by hand planes- a great excuse to break out a few of my beautiful smoothing planes and finally have the skills to make the cherry shine.

Technical Details:

Materials: Cherry and Cocobolo.

Finish: Shellac.

Dimensions: 12" (w) x 25" (h) x 18" (d)

Price: \$750

No. 1648

R

rutager West
1602 Hazel St N
St. Paul, MN 55119
rutagerwest1@gmail.com
(651) 774-6794

As a youngster growing up, I was introduced to a wood shop in Jr. High and took a few classes during summer school and in ninth grade. Many years went by after that and then as I was thinking about buying a house, I decided to take woodworking back up to help furnish the place- still haven't made enough furniture, but I'm enjoying the process and especially collecting too many nice tools.

Chopsticks

Sushi, anyone? Well, not me, but I do enjoy making them and I'll reveal my secret is that I have a specialized fixture that when used with a hand plane makes wonderful chopsticks quite easily- ssshh, don't tell anyone.

Technical Details:

Materials: Paduak, Snake wood, Macassar Ebony and Walnut.

Finish: Mineral Oil.

Dimensions: 0.25" (w) x 10" (h) x 0.25" (d)

Price: \$25 - \$100.

No. 1649

Steve Legvold
15760 Harmony Way
Apple Valley, MN 55124
legvold@frontiernet.net
(952) 431-7979

Two years ago, I retired from nursing and have been able to dedicate more time to woodworking. I have been taking woodworking classes over the last 10-15 years. More recently, I have been taking hand tool classes at Mike Siemsen's School of Woodworking where I have learned more about refurbishing and maintaining hand tools. Improved hand tool techniques have been a great benefit.

Sculptured Rocker

Sam Maloof style furniture and craftsmanship intrigues me. This piece was designed and built in a class taught by Marc Adams at his school of woodworking. It is built entirely with glued joinery without screws or other hardware. The rockers were assembled in a form with glued laminations. An angle grinder and a rasps were used to sculpt the shape.



Technical Details:

Materials: Mahogany.

Finish: Shellac.

Dimensions: 48" (w) x 46" (h) x 26" (d)

Price: Not For Sale.

No. 1650

Steve Legvold
15760 Harmony Way
Apple Valley, MN 55124
legvold@frontiernet.net
(952) 431-7979

Two years ago, I retired from nursing and have been able to dedicate more time to woodworking. I have been taking woodworking classes over the last 10-15 years. More recently, I have been taking hand tool classes at Mike Siemsen's School of Woodworking where I have learned more about refurbishing and maintaining hand tools. Improved hand tool techniques have been a great benefit.

Blanket Chest

This chest was made in a class taught by Chris Gochnour at Marc Adams School of Woodworking. Both power and hand tools were used in its construction.



Technical Details:

Materials: Cherry with poplar secondary.

Finish: Shellac.

Dimensions: 40" (w) x 26" (h) x 20" (d)

Price: Not For Sale.



No. 1651

Peter Molinaro
2511 Angell Road
Sunfish Lake, MN 55118
pmolinaro@pioneereng.com
(651) 269-7495

I am a part-time woodworker and grandfather of seven. I work in a small basement shop that is equipped with both hand and power tools. My projects are of my own design for a specific purpose and location. I enjoy finding solutions in designing and building new projects. Most of the pieces I have built are being used and enjoyed daily.

Bench With Boot Dryer

Arts and Craft style bench incorporated with an internal boot and glove drying system. The drying system will dry two pair of boots and gloves at a time. The control switch provides options for two hours to a maximum of twelve hours of unheated drying time. Constructed primarily of quarter sawn white oak with a multi process finish, this process highlights the beautiful oak rays in this wood. Combined with mortise and tenon joinery adds to quality of a beautiful oak bench. One of the side benefits is boots, gloves and hats, end up organized within the box and not scattered on the floor.



Technical Details:

Materials: Quarter Sawn White Oak.

Finish: General Finish Arm-R-Seal Satin.

Dimensions: 30" (w) x 17" (h) x 19" (d)

Price: Not For Sale.



No. 1652

Elise Walker
796 Wapogasset Lake Lane
Amery, WI 54001
aewalker2@juno.com
(608) 247-5268

Chippendale Block And Shell Bureau

My woodworking hobby provides challenges and great joy as I build each piece. I admire the graceful lines, intricate details and carvings of many 18th century pieces. After I made an 18th century highboy which required learning many skills I then set my eye on the block front style. I spent many hours reading/studying and visiting several museums to view many pieces. I decided I wanted a 4 drawer block and shell bureau and the quest began!

My version of the 1765 block and shell bureau by John Townsend, Newport, RI now in the New York Metropolitan Museum of Art. Over several years I researched, visited museums and drew up my own plans as I couldn't locate plans for this piece. I took creative license carving the Townsend rosette design of 1792 with the center C scroll and cross hatching in the shells rather than the 1765 rosette with stopped fluted petals. Most often shells were carved separately and applied to the drawer front; I carved the drawer front and shells out of one thick piece of mahogany, which was more challenging but allowed for the grain line to continue throughout the drawer front and all shells.

When planning, I asked my former woodworking teacher for some technical advice; he wanted to make one also. Using the information I gathered and my plan we each made our own piece.



Technical Details:

Materials: Mahogany.

Finish: Lacquer.

Dimensions: 37" (w) x 35" (h) x 21.25" (d)

Price: Not For Sale.

No. 1653

David Munkittrick
1108 Town Hall Road.
River Falls, WI 54022
dmunks@me.com

David began making furniture and cabinets in 1983 in a cooperative shop along with four other woodworkers. That collaboration led to the Fourth Street Guild where he worked for a couple years before moving to River Falls in 1986. David was one of the founding members of Xylos Gallery. He left the gallery in 1999 to join the staff at American Woodworker Magazine as an Associate Editor. In 2008 he left the magazine and returned to his furniture making roots. He remains active as a freelance writer for The Family Handyman, Woodcraft, Woodworkers Journal, American Woodworker and Woodworkers Guild Of America.

Rings Of Saturn

The wood for this piece was purchased for a sushi tray and bowl commission. The tray and bowl only took a corner of the slab, leaving a beautiful slice of burl just perfect for platter turning. I find the lace burl particularly stunning. It has a three dimensional quality with the lace seeming to stretch over the burl buds beneath it. I was very nervous throughout the entire turning; a mistake would be calamitous. I hope I did the wood justice.



Technical Details:

Materials: Redwood Lace Burl.

Finish: Oil/varnish.

Dimensions: 15" (w) x 15" (h) x 2" (d)

Price: Not For Sale.

No. 1654

D

avid Munkittrick
1108 Town Hall Road.
River Falls, WI 54022
dmunks@me.com

David began making furniture and cabinets in 1983 in a cooperative shop along with four other woodworkers. That collaboration led to the Fourth Street Guild where he worked for a couple years before moving to River Falls in 1986. David was one of the founding members of Xylos Gallery. He left the gallery in 1999 to join the staff at American Woodworker Magazine as an Associate Editor. In 2008 he left the magazine and returned to his furniture making roots. He remains active as a freelance writer for The Family Handyman, Woodcraft, Woodworkers Journal, American Woodworker and Woodworkers Guild Of America.

Open Arms

The wood for this platter was an off cut of a slab used to build a coffee table. The figure you see is called chatoyance (French for “cat’s eyes”). The figure is often found at the base of a tree where the stresses from wind coupled with the enormous weight of the tree give rise to this jewel like figure.

The tree was felled for a housing development over 20 years ago. A woodworking friend and I split the cost of having the tree sawn into lumber. I still have some of it left, including the blank I used to turn this platter.



Technical Details:

Materials: Walnut.

Finish: Oil/varnish.

Dimensions: 21” (w) x 21” (h) x 2.5” (d)

Price: \$360.

No. 1655

Troy, Groh
1703 8th Ave NW
Austin, MN 55912
tgroh@charter.net
(507) 437-4980

A hobbyist woodworker for over 35 years. I always enjoyed working with wood from a young age, being able to express unique methods and ideas. I found this project outside my norm but it was quite challenging expressing and finding all the right pieces.

For The Birds

The house I made out of wood and was all cut out on my CNC machine. It was then painted in an aging way making it look like it was made of metal with the old time rivets and all. The roof is a copper color paint and the walls are a brass paint with a dark aging patina wax and then everything was clear coated. Designed to be hung on a wall or post. Overall it was a fun first time project and a learning experience on what can be done using metal paints as a finish.



Technical Details:

Materials: Poplar.

Finish: Sculpt Nouveau silver and brass paint, wax and Clear Guard.

Dimensions: 17" (w) x 11" (h) x 9" (d)

Price: \$350.

No. 1656

Troy, Groh
1703 8th Ave NW
Austin, MN 55912
tgroh@charter.net
(507) 437-4980

A hobbyist woodworker for over 35 years. I always enjoyed working with wood from a young age, being able to express unique methods and ideas. I found this project outside my norm but it was quite challenging expressing and finding all the right pieces.

Back With Nature

A Curly Lace Redwood Burl Table. The wood and inspiration for this project came from after visiting an old timer who was a salvage logger in northern California. During my travels I finally found the redwood burl top slab with a complete live edge that I liked. All this was cut in the ruff so I didn't really know at the time what I had until I had a finish on it. My next challenge was finding the legs. They consist of two separate pieces of rustic redwood. I was able to put them together in a way making it look like as if you would see it growing out of the ground in nature.



Technical Details:

Materials: Redwood.

Finish: Water Base Tabletop Satin, Teak Oil.

Dimensions: 36" (w) x 29" (h) x 31" (d)

Price: Please Inquire.

No. 1657

A

melia Kennedy
1634 St Croix Circle
Golden Valley, MN 55422
amelia.kennedy@target.com
(651) 436-5897

I love wood and design. I am driven to crafting and creation in many ways. Woodworking is an old hobby, and a re-found passion.

I am an Industrial designer for Target home products with a focus on ergonomics - making things work well for all sorts of people.

Mahogany Chair

For this piece, I explored clean lines and a subtle play of curves. The grain is prominent, celebrating the magnificence of this fine wood. I designed and made this chair in the late 1970's. In looking back, I see a common thread of reserve and quiet in my work. It's satisfying to recognize my young self in who I have become.



Technical Details:

Materials: Solid and laminated Mahogany.

Finish: Oil and varnish.

Dimensions: 19.5" (w) x 49" (h) x 21" (d)

Price: Not For Sale.

No. 1658

Jeff Hand
5844 Portland Ave S
Minneapolis, MN 55417
jeffshand@yahoo.com
(612) 710-2004

Jeff is a transplant from the Texas panhandle where there is nary a tree to be found except for punky Cottonwoods by the occasional creek bed and less-than-exciting Dutch Elm. Fifteen years ago he traded the wind, tumbleweeds and flat plains for an abundance of trees, lakes and four distinct seasons. He found his way to the MN Woodworkers Guild at the 2007 Northern Woods Exhibition and never looked back. In addition to woodworking, Jeff also enjoys experimenting with making hand tools and tool restoration. He currently lives in Minneapolis with his beloved Kate.

A Very Slender Clock

When working on another furniture project, completely by a stroke of odd luck, I ended up with a symmetrical triangle of timber. Recently, I had some other woodworkers over to the shop and I called out the ‘scrap’ in the corner. They all agreed something should become of the scrap since it was still a nice piece of Cherry. The result is this slender floor standing clock. I very much like the way the sap wood (cream colored) and the remaining bark contrast with the stone ring. It’s refined, yet not. The texture on the sides is quite tactile and the interaction of the light with the facets adds a visual surprise depending on the direction of the light. A big Thank You to guild member Dave Davies. Dave donated the soapstone for the clock ring and instructed me in the ways to prepare it.

Technical Details:

Materials: Cherry, stone and metal.

Finish: Danish oil, shellac.

Dimensions: 8” (w) x 51” (h) x 7” (d)

Price: Not For Sale.

No. 1659

Greg Flanagan
3155 Hayes St. NE
Minneapolis, MN 55418
greg@gregflanagan.com
(612) 251-4306

Growing up as the son of a shop teacher and a home economics teacher sparked Greg Flanagan's curiosity for building and making things by hand. This led to his passion for exploring, learning, and nurturing curiosity. He utilizes traditional techniques blended with cutting edge technology in both the digital and physical.

Paddle

Each project we embark upon is a convergence. A house on a lake, Irish heritage, and a growing family presented the need to commemorate the time with a new challenge. Smooth lines and sharp detail come to all of us in different ways.

Technical Details:

Materials: Ash.

Finish: Tung oil and wax

Dimensions: 6" (w) x 60" (h) x 1" (d)

Price: Please Inquire.

No. 1660

B

ob Kraby
1319 County Rd C
Maplewood, MN 55109
woodbkraby@yahoo.com
(651) 431-1679

Bob became involved in woodworking more than a decade ago. He currently enjoys a successful career as a professional woodworker with Forest Products Supply in Maplewood, MN. Bob is an apprentice with a highly-respected craftsman in the woodworking community. When he is not working, Bob spends countless hours in his home-shop developing the highly artistic side of his craft, consistently striving to learn new techniques.

Intensity

After talking with another woodworkers wife last year, I was inspired to take a class. A new perspective. That night I went home and went on-line. Silas Kopf was teaching a class at Mark Adams School of woodworking and I knew I couldn't pass it up. For what ever reason, the face is what I created. After having it propped up in my shop for some time, I noticed the eyes followed me intently. Now they follow you! The frame is my first try at fabric carving.

Technical Details:

Materials: Various veneers and maple.

Finish: Oil and lacquer.

Dimensions: 16.5" (w) x 15" (h) x 1.5" (d)

Price: Please Inquire.

Mike Siemsen's School of Woodworking

schoolofwood.com
651-257-9166

Chisago City, MN 55013



WOODCRAFT
Helping You Make Wood Work

Woodcraft Is The Area's
Largest Supplier Of Quality
Tools, Supplies & Advice

- Knowledgeable Sales Staff
- Attention to Quality
- Education & Expert Advice
- Wood & Lumber

*Visit Us Today.
Over 15,000 Tools & Supplies!*

	1494	
135W		Lyndale
	90 th St	★

9125 Lyndale Ave. South
Bloomington, MN 55420
952-884-3634

Quality Woodworking
Tools • Supplies • Advice



Build better every day



FREE
tablet editions
for print
subscribers



Subscribe to *Fine Woodworking* and get **MORE!**

MORE trusted advice, helpful how-to guidance, and inspiring design ideas for all skill levels.

MORE in-depth tool reviews, step-by-step techniques, plus drawings, diagrams, and photos to guide you.

MORE ways to enjoy our magazine and gain unmatched woodworking information thanks to enhanced tablet editions loaded with interactive extras – **YOURS FREE** as a paid magazine subscriber.

Fine
WoodWorking

Subscribe today at FineWoodworking.com/subscribe

Or call 800-888-8286. International customers, call 203-702-2204.

Monday - Friday 9AM - 9PM ET, Saturday 9AM - 5PM ET

YOUR WOODWORKING SUPERSTORE

FOR THE PROFESSIONAL AND HOME WOODWORKING ENTHUSIAST



DEWALT



13 In. 2 Speed Thickness Planer with Infeed/Outfeed Tables And Extra Knives
Model DW735X



20V MAX* Li-Ion Hammerdrill and Impact Driver Kit
Model DCK296M2K

LAND OF THE FREE ★★★★★
TOOLS OF THE BRAVE



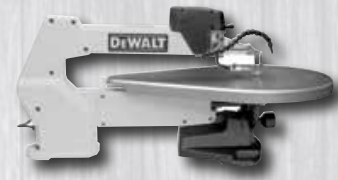
3 Amp Oscillating Multi Tool Kit
Model DWE315K



20V MAX* XR Li-Ion Oscillating Multi Tool Kit
Model DCS355D1



12 In. Double Bevel Sliding Compound Miter Saw
Model DWS780K



20 In. Scroll Saw
Model DW788

SINCE 1948



SIGN UP ONLINE

E-MAIL ADDRESS

ACME TOOLS
BUILDING • REMODELING • WOODWORKING • LANDSCAPING™

acmetools.com

PLYMOUTH

494 and Rockford Rd.

763-559-8665 • 866-681-8665

Store Hours: Mon-Fri 7:00-5:30 • Sat 8:00-5:30

Also located in Duluth and Bemidji

10 Locations To Serve You In MN, ND and IA

QUALITY • SERVICE • SELECTION • VALUE

We reserve the right to correct errors, limit quantities and terminate any offer at any time.

YOUNGBLOOD

LUMBER CO.

Wholesale supplier since 1876

- FAST SHIPMENT AND DELIVERY
- FINE QUALITY CABINET GRADE MATERIALS
- ONE ON ONE SERVICE REPRESENTATIVES
- WIDE RANGE OF INVENTORY
- COURTEOUS KNOWLEDGEABLE SERVICE
- MATERIALS SORTED OR SELECTED SPECIFICALLY FOR YOU

Wholesale prices to guild members

HARDWOOD
Lumber and
Plywood

SOFTWOOD
Lumber and
Plywood

SPECIALTY
Panel
Products

STARON
Solid
Surface

NEVAMAR
Decorative
Laminate

OFFICE HOURS
7:30AM-4:00PM

YARD HOURS
7:30AM-3:45PM

SATURDAY HOURS
8:00AM-11:45AM

1335 CENTRAL AVENUE NE • MINNEAPOLIS, MN 55413
612-789-3521 • 800-933-1335 • FAX 612-789-9625

Web Site: www.youngbloodlumber.com

Forest Products Supply, Inc.

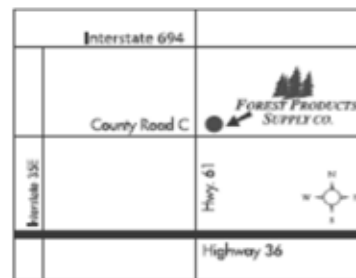
Hardwood lumber supplier since 1972

We have the best selection of domestic and exotic hardwood lumber in the Twin Cities. We have installed a new 52" wide belt sander with three sanding heads to help you with your larger projects.

Forest Products provides:

- Seventy different species of lumber in stock
- 10% discount on lumber to guild members
- Cabinet grade plywood (nearly any plywood can be custom ordered)
- Exotic one of a kind turning stock
- Slab lumber up to 4 inches thick and 24 inches wide
- Sanding services (52 inch time saver)
- Planing services (24 inch planer)
- CNC custom cutting services
- Resaw services (resaw up to 12 inches)
- Free advisory services on your furniture or cabinet projects

LOCATION:
1 Light North of Hwy. 36 on Hwy. 61
Northeast Corner



FOREST PRODUCTS SUPPLY INC.

2650 East Highway 61
Maplewood, MN 55109

Phone (651) 770-2834 • Fax (651) 770-3376

www.forestproductssupply.com

HOURS:
9:00 a.m. - 8 p.m. Monday-Thursday
9:00 a.m. - 5 p.m. Friday
9:00 a.m. - 3 p.m. Saturday
Closed - Sunday