

Thirty-Seventh Annual

Northern Woods

An Exhibition of Fine Woodworking



Photo by Ramon Moreno

Craig Johnson

2019 Best In Show



*Eden Prairie Center
Eden Prairie, Minnesota
7 - 10 October 2021
Minnesota Woodworkers Guild
www.mnwwg.org*





POWERFUL BRANDS LOOKING TO THE FUTURE

JPW has leading brands with industrial products that users demand. We have brands that users trust, and brands that users rely on to complete the toughest applications.



For more than 50 years, JET has provided the industrial marketplace with superior quality, innovation and service. Fueled by innovative product development and bolstered by hundreds of authorized dealers, JET continues to establish itself as the premier full-line industrial tool brand.



Since 1921, Powermatic has set the Gold Standard for quality and durability for the master woodworker. With innovative products for both commercial and home hobbyists' shops, Powermatic is unanimously regarded as the epitome of woodworking excellence.



ProMac is a supplier of mill drills, bandsaws, lathes, grinders, hoists, trolleys, arbor presses and vacuums for industrial, commercial and household use.



ToolAir is a supplier of air compressors, air tools, heater fans, dehumidifiers, submersible pumps and upper water pumps.

Table of Contents

Welcome	4
Award Descriptions	7
Judges' Biographies	8
Entries	10

Sponsors



Minneapolis and Jordan, MN

History

In 1933, in the depths of the Great Depression, Joseph and Frances Siwek began Siwek Lumber & Millwork what is now SIWEK LUMBER & MILLWORK, INC. The young family, newly married with a young baby, Joe Jr., struggled to make it. Unemployment peaked at nearly 25%, jobs were scarce, and Joe, Sr layed-off from his job at the railroad, he began the unimaginable, a new business.



Given permission from his former employer, Joe, Sr began dismantling “retired” wooden boxcars, bundled the scraps and pedaled them as heating firewood. Loose coal along the rail lines also was packaged and re-sold to families desperate to heat their homes. Times were tough, but so were the Siwek’s. An important work ethic was born.

They operated on E. Hennepin Ave. delivering firewood and coal in trucks. East Hennepin Beverage sold cold drinks to neighborhood homes and businesses. Eventually, America was at war and although times were still difficult, they were getting better. After World War II ended in victory and the men returned to their families, business started to change. New homes sprang up where potatoes were grown in new areas as far north as Lowry Ave.!

Coal and firewood was replaced by natural gas! The Siwek’s adapted to the new building materials market and sold lumber, plywood and insulation to needy homeowners. Basements were finished in wood, garages were added, cabins were built. In 1947, Siwek Fuel and Lumber was incorporated and moved to the current location of their headquarters on Marshall St NE, just north of Lowry Ave in Minneapolis. A shiny new business amid the industry and farm fields along the mighty Mississippi River.

Joe, Jr. and Judy, now raising a family of their own, ushered the business into this new era of prosperity. The 50’s and 60’s were boom times for the neighborhood. Many businesses grew up in NE Minneapolis and jobs were plentiful. Families raising many children lined the neighborhood streets. Miracle products, like sheet paneling for basements, pourable insulation for attics, aluminum storm windows, gypsum board replacing plaster, and hardboard for siding provided new revenues for the business.

Eden Prairie Center

An American Original - A Minnesota Tradition

Eden Prairie Center is pleased to host the thirty-fifth annual edition of The Minnesota Woodworker's Guild Northern Woods Exhibition of Fine Woodworking. We anticipate many positive responses from our customers who appreciate the arts, and we have found our work pleasantly surprises newcomers to the exhibit who are shopping at Eden Prairie Center. It's easy to get caught up in the amazing craftsmanship and forget what you came for!

This show displays the high level of artistic talent the Minnesota Woodworkers' Guild represents. The pieces in the show are made by hard-working, dedicated artisans who appreciate the traditional skills required to work with wood. There are many factors involved in the creation of the pieces on display, and each one is unique to its own creator's personality and interpretation. We hope you will appreciate this effort as you view and admire the works of art. Your most outstanding impression will undoubtedly be that of the quality of workmanship and design which you see through the show.

We thank the Minnesota Woodworkers' Guild for choosing Eden Prairie Center as the site for this exhibition and wish its members the best of shows and much future success.

General Manager

Welcome to the Northern Woods Exhibition

The Northern Woods Exhibition is an annual woodworking show and competition sponsored by the Minnesota Woodworkers' Guild and hosted by the Eden Prairie Center. The show provides an opportunity for woodworkers to display and discuss their craft, and for the community to view the best in high quality woodworking design and construction. The pieces on display are works of art in addition to being functional furniture.

Education is one of the main goals of the Minnesota Woodworkers' Guild. Many of the pieces in this show reflect skills learned at monthly meetings, workshops and seminars sponsored by the guild. If you are a woodworker who wants to learn new techniques and meet with others who are willing to share their knowledge, please be our guest at a meeting and consider becoming a member.

Enjoy the show!

Ed Neu
President
Minnesota Woodworker's Guild

Northern Woods Committee

The Northern Woods Exhibition Committee is composed of several guild members who volunteer their time, energy and expertise to organize this show. They meet each month from December until the show starts. They each receive an assignment or two to make arrangements to make the show a success. This years committee members are:

Charlie Kocourek	~ Chairman
Bob Kraby	~ Banquet, Photography
Richard Tendick	~ Judges, Photography
George Lucas	~ Sponsors
Steve Robb	~ Show Floor Layout
Roger Knudson	~ Master of Ceremonies
Tony Kubalak	~ Show Catalog, Show Brochure & Placards, Posters
Rutager West	~ Award Trophies
Charles, Finne	~ Promotions
Jon Perko	~ Photography, Post Show Recognition
Ed Neu	~ Judges' Packets, President
Ron Ausen	~ Booth Schedule

If you have suggestions or comments about the show or would like to help with next year's show, please contact one of the above committee members. To view additional pieces of work from past years of Northern Woods as well as our members' gallery, please visit our web site at www.mnwwg.org

Judging

All entries will be judged in a pool rather than in separate categories for each form of furniture. The judging categories are designed to reward woodworkers who are good at creating new ideas or interpreting older ones as well as those woodworkers who are skilled with machines and hand tools. The judges will score how well they liked each piece and how well it was made. Additionally, judges will offer constructive verbal comments on a voice recorder.

The judging categories have been designed to encourage you to enter a piece regardless of your status as a woodworker. It is more than a competition for prizes. The show is meant to be a display of the state of the art of woodworking in Minnesota and a chance for guild members to see what their peers have been up to in the last year. You may decide to enter a piece but not have it judged.

Each piece is eligible to receive only one award from the judges. These awards are listed on the facing page. All pieces are still eligible for the Peer Award and the People's Choice Award.

Additional Awards

In addition to the regular awards, the Minnesota Woodworkers' Guild is pleased to announce one additional award.

Best Youth Piece Award **Sponsored by Mark Powell**

This award will be made to the "Best" piece submitted by a youth, age 18 and under. The piece will be judged on overall craftsmanship. Areas to be considered will be selection of materials appropriate for the piece, execution of joinery, and quality of finish and its appropriateness for the piece. Complexity of the piece will be considered. Extra consideration will be given to pieces of original design.

Glenn Gordon Award **Sponsored by Tom Caspar**

Award Categories

BEST IN SHOW

The winning piece should exhibit the best qualities of most of the following categories. Sponsored by *Youngblood Lumber*.

BEST ORIGINAL DESIGN

A well-designed piece must be both useful and pleasing to the eye. Will it perform its intended job? Good design is in large part a subjective opinion. It is difficult to define what good design should look like, but we can agree how it should affect a thoughtful critic. It invites a second, more intimate look, and asks to be touched by hand and spirit. This award is to be presented to the best design, one that is not a copy of a previously designed piece, i.e., an original design or a unique adaptation of a design style. .

BEST TRADITIONAL PIECE

This is an award for the piece which is built in the traditional manner, a reproduction or a piece heavily influenced by a traditional design. Sponsored by the *Society of American Period Furniture Makers*.

BEST DETAIL

The finest craftsmanship is often just a small part of a piece but makes all the difference. This award goes to the best conceived and/or most deftly executed detail that really makes the piece stand out. This might be an exceptional set of dovetails, an expertly carved detail or an exquisite inlay.

THE PEOPLE'S CHOICE

This award is determined by ballots submitted by the public. It recognizes those people's favourite piece in the show. Sponsored by *Forest Products Supply*.

BEST FINISH

The finish may enhance the natural beauty of wood or alter its texture and color. A good finish elevates one's perception of the piece to which it is applied. Depth, luster, and clarity are characteristics of a good finish. Sponsored by *Woodcraft*.

BEST TURNING

This award honours the tradition of turning. This winning piece will exhibit quality of form as well as execution. Sponsored by *Old School Art Center*.

BEST FIRST TIME IN SHOW

Whether professional or amateur this award goes to the best piece entered by a first time Northern Woods exhibitor. Sponsored by *Mark Laub Studios*.

MOST TECHNICALLY ACCOMPLISHED

This is an objective assessment. The best work will exhibit a mastery of many woodworking techniques. It will respect the limitations of working in wood. Qualities to look for include flawless treatment of surfaces, precise joinery and carefully controlled detail. The award will take into account the difficulty of the undertaking. Sponsored by *Woodcraft*.

WOODWORKING FOR PLEASURE

This prize is awarded to the best piece exhibited by a person for whom woodworking is an avocation. Sponsored by *Mike Siemsen's School of Woodworking*.

3 JUDGES' AWARDS

Sometimes a piece worthy of recognition doesn't fall into any of the award categories. It may have something special about it that is hard to define, or the judges may choose, at their own discretion, to fit any piece into this category. They may also use this award for recognizing a piece that ran a close second to one of the other category winners. Each of the judges selects a piece independent from the other two. Sponsored by *Fine Woodworking*.

PEER AWARD

This is decided by balloting among all Guild members coming to the show. You will be given a chance to vote for your favorite piece (other than your own) and runners up. Sponsored by *Rockler Woodworking and Hardware*.

Note that all categories are awarded at the judges' discretion. If they do not feel any one piece meets the winning criteria of a category, that category's award will not be given.

2021 Judges

Rollie Johnson

Rollie started a restoration business in 1976 and quickly added furniture building to his repertoire, reproducing antiques and building custom pieces as well as producing custom millwork. In 1997 he wrote his first article for Fine Woodworking magazine which started a relationship with the magazine that resulted in his becoming a Contributing Editor in 2002 and continuing to the present day. Rollie is a frequent writer of tool-test articles for the magazine and is the author of *The Complete Illustrated Guide to Bandsaws* (Taunton Press 2010). He has been a featured presenter for The Woodworking Shows for the past decade. He is the founder and past president of the Central Minnesota Woodworkers Association and in his free time plays Bluegrass mandolin. Rollie doesn't like to be bored.



Brad Holden

Brad Holden is a Minneapolis-based woodworker/cabinetmaker with over 25 years of experience in the field. Brad has also authored many articles on a wide variety of woodworking topics for *American Woodworker* magazine and *Woodworkers Journal*. Brad is currently part of a shared shop in Northeast Minneapolis, working on custom furniture and cabinetry for commercial as well as residential applications.



Jason Holtz

I have been designing and building furniture professionally since 1998. I apprenticed with renowned chair maker and author Jeff Miller in Chicago for three years. It was in his shop where I first started building commissions of my own. After finishing my apprenticeship, I worked in both production and custom shop environments doing a wide variety of work for several years. I took my business full time in 2005 and have focused on custom furniture, with occasional built ins and an interesting kitchen from time to time. This past fall, I took on an apprentice for the first time. I'm excited to be sharing what I've learned with an eager young guy wanting to learn the craft. I work in a co-op shop here in Minneapolis with 5 other talented woodworkers. Most of us were part of Xylos Gallery. I've shown my work with the Chicago Furniture Designers Association, Minnesota Woodworkers Guild, and *The Art of Fine Furniture*. I've also been featured in the *Chicago Tribune*, *Fine Woodworking*, *American Woodworker*, and *FDMC Magazine*.



SAPFM

We are a non-profit organization whose mission includes providing a forum for the understanding and appreciation of American period furniture, its history, and related materials and techniques. Our members include professional full-time cabinet-makers, serious amateurs, conservators, historians, and educators.

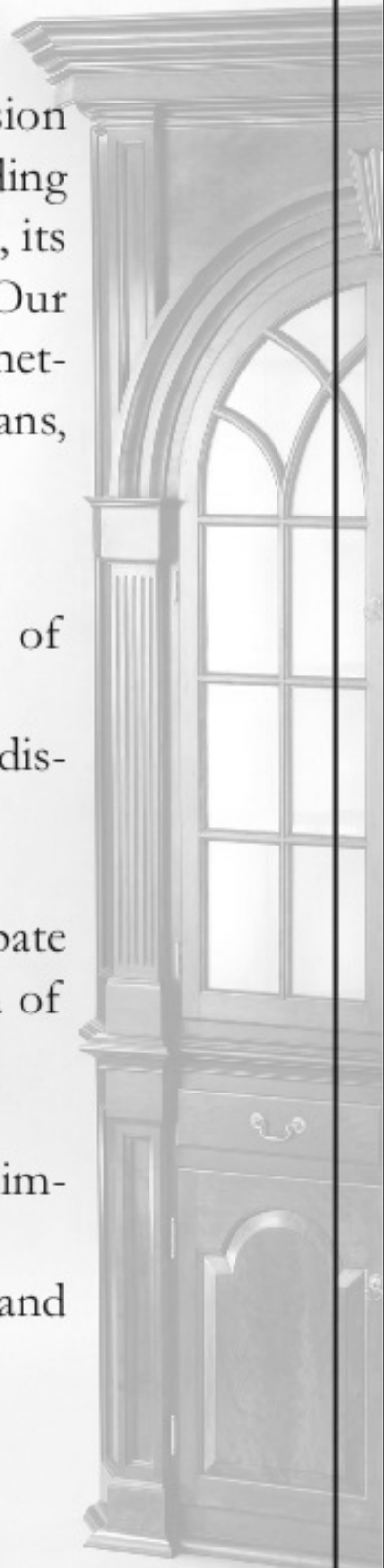
Members of SAPFM enjoy:

- *American Period Furniture*, the annual journal of SAPFM
- an online gallery where member work is displayed
- our quarterly newsletter, *Period Furniture*
- an online forum to post questions and participate in discussions and access to the Member Area of the SAPFM website
- participation in regional chapter events
- opportunities to network with others having similar interests
- eligibility to register for SAPFM conferences and exhibitions.

Learn more about
SAPFM and become
a member today at
www.sapfm.org!



*Society of American
Period Furniture Makers*



No. 2101

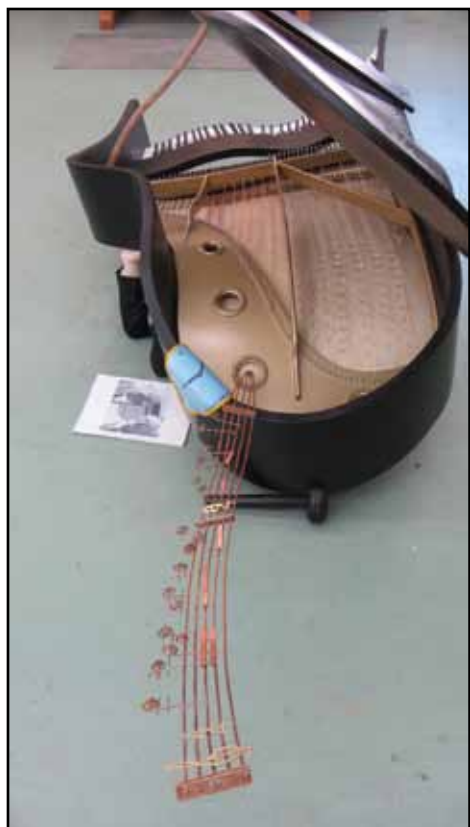
R

oger W. Knudson
PO Box 264
Finlayson, MN 55735-0264
(320) 233-6543
rwknudson@frontiernet.net

Woodworking for many years I have continually focused on design creativity while attempting improved discipline in fabrication. Retirement from corrections education has provided more time to devote to creating a variety of furniture and sculptural pieces. An occasional commission provides a chance to work with a client collaboratively to produce a memorable piece for him/her.

Dali Plays Stravinsky

“Dali Plays Stravinsky”, a bit of surreal sculpture after the works of Salvador Dali. The melted piano, held up by Igor Stravinsky is emitting the first two measures of “Rite of Spring”.



Technical Details:

Materials: Bending plywood, birch, brass, welded steel, polymer clay, copper and stainless wire.

Finish: Paint.

Dimensions: 36” (w) x 20” (h) x 80” (d)

Price: \$30,000.00

No. 2102

David Lane
4648 Aldrich Ave S
Minneapolis, MN 55419
(612) 822-6362
(612) 839-2364
david56@khdl.org

I am a retired librarian who enjoys combining my interest in woodworking with a career having worked with books. I most enjoy working with hand tools but am not at all opposed to using power tools when called for. I have been a member of the Guild since 1999.

Montag's Book Shelf

This shelf is a tribute to a work by one of the twentieth century's most famous science fiction authors. It is also a collaboration with a fine book-binder, Guild member Brad Rubin, who rebound the book on display. Learning to do the inlay on the wooden book spines was a fun challenge, as was designing the jig for sculpting the books themselves. They are held in place by rare earth magnets and can be rearranged at will. The drawer rides on two maple full extension drawer slides. To open the drawer, pretend there's a fire.



Technical Details:

Materials: Assorted woods including pine, walnut, cherry, maple, poplar, and oak.

Finish: Rubbed on polyurethane.

Dimensions: 42" (w) x 14" (h) x 12" (d)

Price: Not For Sale.



No. 2103

Ed Neu
MapleRock WoodWorks
7344 27th St S.E.
Buffalo, MN 55313
(651) 840-6732
(763) 477-5027
ed@MapleRockWoodWorks.com

Ed is an award-winning designer and builder of custom and reproduction furniture, and wooden treasures that come in many shapes and sizes, and fulfill many purposes. He enjoys providing heirloom quality solutions for people – creating a custom piece of furniture to fit in a specific location or provide a unique set of features. Designing and crafting a piece to coordinate with existing furniture is particularly rewarding – both to him and his clients.

The Elm

This rustic bench was made from a single elm timber, sawn from a tree on our property that had succumbed to Dutch Elm Disease. The tree had grown for many years arched over the roof of our barn. When it went to the saw mill all the lumber was cut straight and true. But, as the lumber dried, several timbers reverted to their curved shape as if they were still in the living tree. The warped and curved timber just shouted out that it needed to become a bench.



Technical Details:

Materials: American Elm.

Finish: Linseed oil.

Dimensions: 42" (w) x 19" (h) x 10" (d)

Price: \$895



No. 2104

Ed Neu
MapleRock WoodWorks
7344 27th St S.E.
Buffalo, MN 55313
(651) 840-6732
ed@MapleRockWoodWorks.com

Ed is an award-winning designer and builder of custom and reproduction furniture, and wooden treasures that come in many shapes and sizes, and fulfill many purposes. He enjoys providing heirloom quality solutions for people – creating a custom piece of furniture to fit in a specific location or provide a unique set of features. Designing and crafting a piece to coordinate with existing furniture is particularly rewarding – both to him and his clients.

Ebony and Ivory

This chess box reproduction was made for a collector of chess sets, for whom I have made several boxes/boards. It is a reproduction of a box made in or around Germany in about 1860. The original was made of ebony and genuine ivory.

As there is an international moratorium on the trade of ivory, this box is made from synthetic ivory and real Gaboon ebony veneers.

The unique tapered sides of its design present some unique visual interest, and numerous construction challenges.

It is lined with billiard cloth.

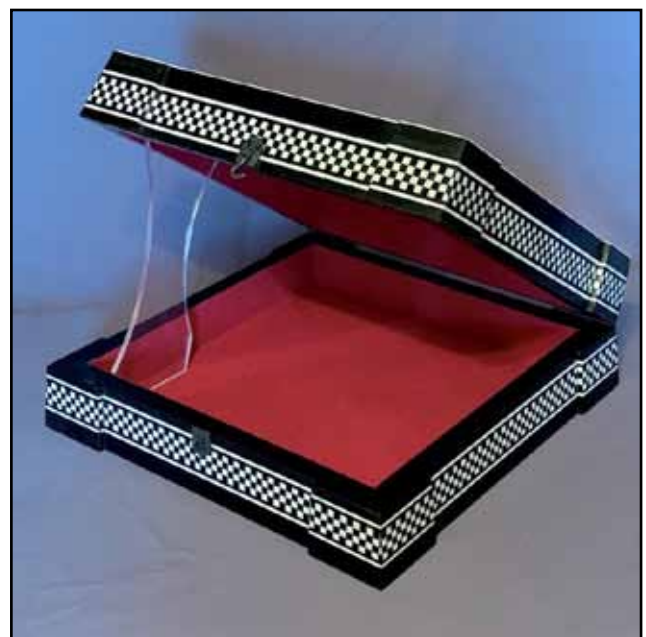
Technical Details:

Materials: Gaboon ebony and synthetic ivory veneers over Baltic birch case.

Finish: Wax.

Dimensions: 22" (w) x 22" (h) x 5" (d)

Price: Not For Sale.



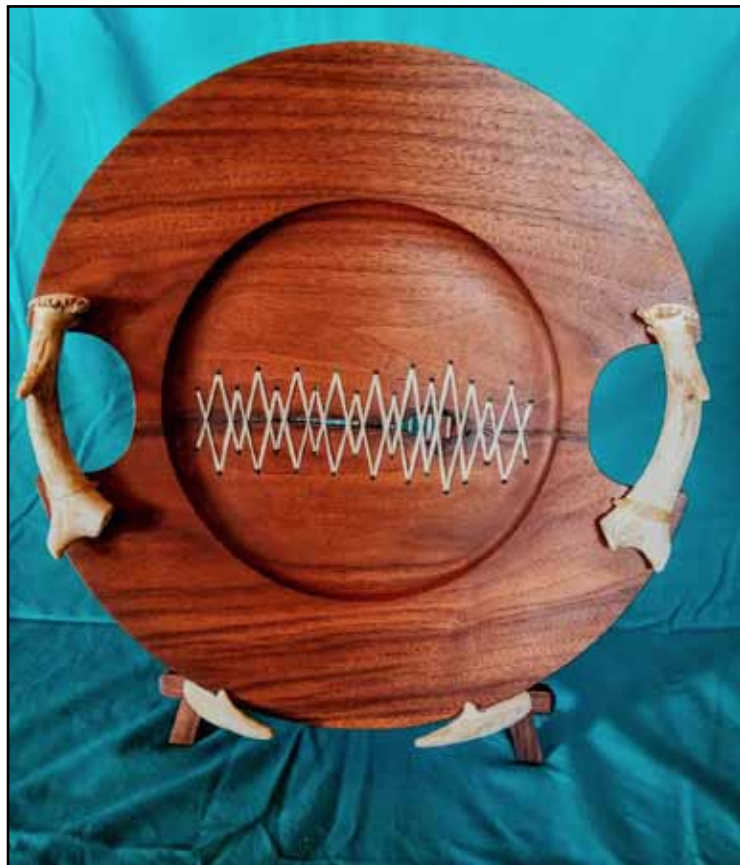
No. 2105

Robert Moore
Box 1136
Walker, MN 56484
(218) 547-2528
(218) 507-1071
Bobchar2528@gmail.com

I started my career as a wood patternmaker in high school and continued in the trade until I retired. After I retired and moved to Minnesota I gained interest in the esthetic approach to woodworking by building custom furniture then ornate box's and now I'm experimenting with turnings. My interest in woodworking started as far back as I can remember leading to a job working with wood to helping build my log home. To building furniture for it and any wood objects I can dream up.

Stitch In Time

A solution for a piece of wood with a major flaw in the middle of the board to let it tell it's own story in your imagination



Technical Details:

Materials: Walnut, Deer antlers and Sineu.

Finish: Danish oil.

Dimensions: 17" (w) x 18" (h) x 12" (d)

Price: Please Inquire.

No. 2106

Robert Moore
Box 1136
Walker, MN 56484
(218) 547-2528
(218) 507-1071
Bobchar2528@gmail.com

I started my career as a wood patternmaker in high school and continued in the trade until I retired. After I retired and moved to Minnesota I gained interest in the esthetic approach to woodworking by building custom furniture then ornate box's and now I'm experimenting with turnings. My interest in woodworking started as far back as I can remember leading to a job working with wood to helping build my log home. To building furniture for it and any wood objects I can dream up.

Inspired To New Heights

A interesting design that enhances the different types of wood while giving the illusion of some elements suspended in the air.



Technical Details:

Materials: Walnut and Curly Maple.

Finish: Danish oil and lacquer.

Dimensions: 12" (w) x 20" (h) x 10" (d)

Price: Please Inquire .

No. 2107

M

ichael Nesnidal
19988 Berkshire Avenue
Jordan, MN 55352
(608) 698-0935
mness4@yahoo.com

I am a self-taught woodworker with an addiction to cherry, walnut, and maple. My approach to furniture design typically combines delicate structures with gentle curves and interesting wood figure. Despite being an engineer by training, my design process does not involve detailed drawings or scale models. Everything is eye-balled, and the wood has an equal say in the process. My wife, Renee, and I have been married for 29 years because she has been able to accept my wood hoarding “issue.” We have three children ages 14, 16, and 18.

Floating Nested Tables

These floating tables feature an African mahogany base with curved rails and gentle, hand-carved splayed legs. The tops are tiger maple with a beveled under-cut along the circumference to maintain the lightness of the piece. The maple and mahogany support structure for the floating top is also consistent with the curvy, delicate theme, and the fasteners are hand carved from maple. The finish is rubbed shellac. A warning at the request of my daughter: the smaller table is not a stool. Such confusion could be very painful for us both!



Technical Details:

Materials: Tiger maple and African mahogany.

Finish: Shellac.

Dimensions: 22” (w) x 26” (h) x 22” (d)

Price: Please Inquire.

No. 2108

R

ron Aussen
783 Fairmount Ave
St. Paul, MN 55105-3342
(651) 271-4829
ronausen@gmail.com

I have been an amateur woodworker since I was school age. I have been a guild member for 25 years, and currently serve on the board. My current passion is green woodworking.

Curved Table

The table is made from solid wood. A green oak and maple log was purchased from the blowdown area near Big Woods State Park. The oak log was used for the tabletop, it was first split and rived into 3x3 billets. These billets were steamed for 5 hours, bent to a curve form using hydraulic jacks, and then after cooling and stabilizing, resawed into boards. The boards were slowly dried to 5% moisture, cut to match using a template method, and then assembled and surface finished. The undercarriage was made from the maple log. Pieces were rived, cut to dimension, and then steam bent to form. The undercarriage was assembled with tapered wooden pegs. The top was chemically stained to accent the 2 sapwood board edges. The table was finished with an oil finish.



Technical Details:

Materials: Oak and Maple.

Finish: Oil.

Dimensions: 24" (w) x 18" (h) x 36" (d)

Price: Not For Sale.

No. 2109

Jerry Griffin
16205 Minnetonka Blvd
Minnetonka, MN 55345
(612) 850-4790
jdgriffin@comcast.net

After a brief introduction to the basics in high school, I developed a lifelong passion for creating things with my hands and working with wood in particular. Being self-taught, I continue to pursue this avocation through reading, observation, and much trial and error. I build primarily for personal use, and for family and friends.

Pennsylvania Dutch Cupboard

This reproduction of an eighteenth-century step-back cupboard was inspired by a photo I saw in a magazine of a similar cabinet. I cut out the photo and hung it over my workbench with the intention of someday building my own version. That was twenty years ago. Finally, last year, I began developing my own, slightly scaled down interpretation, and searching for the perfect materials. The beautiful flame birch primary wood for this cabinet was all cut from a single log harvested in Pennsylvania. The joinery is hand fitted. The surfaces are scraped, dyed, glazed and finished with brushed on shellac.



Technical Details:

Materials: Flame Birch and Poplar.

Finish: Aniline dye, glazing, brushed on shellac and wax.

Dimensions: 42" (w) x 80" (h) x 18" (d)

Price: Not For Sale.

No. 2110

Charles Kocourek
6330 Arthur St NE
Fridley, MN 55432
(612) 559-6179
charlie@jack-bench.com

Charlie Kocourek is an artist, a woodworker,
and a designer in Fridley, MN. He makes
highest quality pieces that can't be found anywhere
else. You can see more of his work at his website:
CharlieKocourek.com

Come On Baby Light My Fire

This entirely hand carved piece is an exploration of different patterns, textures, materials, and finishes. My hope is that it evokes an emotional response from those who view it

Technical Details:

Materials: Mahogany and Crushed Opals.

Finish: Long oil varnish, glaze and a reactive iron finish.

Dimensions: 18" (w) x 17 3/4" (h) x 2" (d)

Price: Please Inquire.

No. 2111

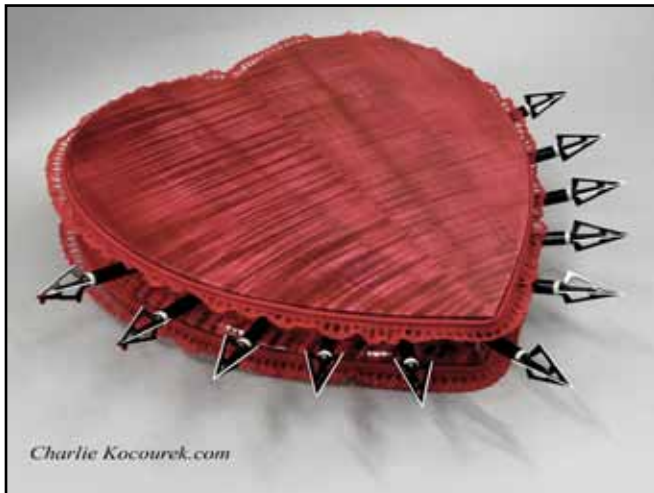
Charles Kocourek
6330 Arthur St NE
Fridley, MN 55432
(612) 559-6179
charlie@jack-bench.com

Charlie Kocourek is an artist, a woodworker, and a designer in Fridley, MN. He makes highest quality pieces that can't be found anywhere else. You can see more of his work at his website: CharlieKocourek.com

Protected

Some people say there's a connection between art and our own neurosis. If that's true then it doesn't take a psychiatrist to see how this piece reflects my own experience with desire, loss, love, and hurt. For me it's also a not so subtle statement about our innate need for self protection.

This piece is for anyone who's ever felt rejected, been afraid to commit, been through a breakup, or has endured a divorce. In other words, almost everyone who's lived into adulthood.



Technical Details:

Materials: Figured Maple, Broadhead Arrows and Red Lace.

Finish: Lacquer.

Dimensions: 17" (w) x 2 1/2" (h) x 16" (d)

Price: \$2700.

No. 2112

Charles Kocourek
6330 Arthur St NE
Fridley, MN 55432
(612) 559-6179
charlie@jack-bench.com

Charlie Kocourek is an artist, a woodworker,
and a designer in Fridley, MN. He makes
highest quality pieces that can't be found anywhere
else. You can see more of his work at his website:
CharlieKocourek.com

Before Anyone Else

Before Anyone Else (BAE) is a very special jewelry box. It's personalized for someone who's initials are E.G.

This box was made almost entirely from one stunning large block of big leaf maple burl. The elliptical shape of the box is repeated in the tray, in the outside shape of the second "hidden" box, in the handle on the top of the second box, and in the divided compartments inside of the second box.



Technical Details:

Materials: Big Leaf Maple Burl, Bloodwood, Opais and
Mother of Pearl

Finish: Shellac.

Dimensions: 11" (w) x 7" (h) x 6 1/2" (d)

Price: Not For Sale.

No. 2113

S

tuart Fox
4670 Decatur Ave N
New Hope, MN 55428
stufox6@msn.com

I'm a hobbyist woodworker who has dabbled in woodworking for many years. After retirement 6 years ago I concentrated on developing my woodworking skills and have enjoyed building pieces of furniture, tables, cabinets and other miscellaneous items. My most recent endeavors have involved making jewelry boxes with marquetry tops using my own designs.

Fancy Fox

The fox marquetry on this jewelry box is an original design. I had been dabbling in various marquetry projects and sketched it out one night. I selected the zebra wood as a frame for the fox and pierced the image into the frame to add the illusion of motion. The inner cover of the jewelry box is a four way book matched walnut burl.



Technical Details:

Materials: Cherry body with cherry, holly, purple heart, zebra wood, walnut burl and various dyed veneers.

Finish: Shellac and lacquer.

Dimensions: 15" (w) x 4" (h) x 10" (d)

Price: Not For Sale.



No. 2114

S

tuart Fox
4670 Decatur Ave N
New Hope, MN 55428
stufox6@msn.com

I'm a hobbyist woodworker who has dabbled in woodworking for many years. After retirement 6 years ago I concentrated on developing my woodworking skills and have enjoyed building pieces of furniture, tables, cabinets and other miscellaneous items. My most recent endeavors have involved making jewelry boxes with marquetry tops using my own designs.

Mid Century Modern Floor Lamp

This tri-leg floor lamp is the second one I have made. The tapered vertical legs with the angular feet make this lamp look like it's from the early 1960's. The lamp shade is custom made using adhesive styrene covered with linen cloth. The inspiration for creating this lamp was a request by my step-daughter and her husband who love mid-century furniture and wanted a floor lamp for their home. While challenging it was fun to build with all the multiple angled cuts, stretcher joints and special materials for the lamp shade.



Technical Details:

Materials: Mahogany, brass and linen.

Finish: Lacquer.

Dimensions: 21" (w) x 61" (h) x 10" (d)

Price: \$450.

No. 2115

R

Richard Tendick
17760 Jaguar Path
Lakeville, MN 55044-9674
(952) 435-6011
rctendick@yahoo.com

I started woodworking in my father's shop and took woodworking classes in high school and college. After retiring from my job as an engineer I started writing articles for American Woodworker magazine.

Gear Box

A few years ago, Doug Stowe was the Fall Seminar presenter. Doug is famous for being a master box maker. One of his statements was that a box should surprise the viewer in some way. With this in mind, I used my engineering background to design a box that used a gear train to open it as a wedding present for a grand nephew who was also an engineer. I liked the design so much that I made two boxes, one for him and one for me.



Technical Details:

Materials: Walnut, Baltic Birch Plywood,
Bleached Birdseye Maple Veneer, Metal

Finish: Oil.

Dimensions: 14.5" (w) x 6" (h) x 7.5" (d)

Price: Not For Sale.

No. 2116

R

Richard Tendick
17760 Jaguar Path
Lakeville, MN 55044-9674
(952) 435-6011
rctendick@yahoo.com

I started woodworking in my father's shop and took woodworking classes in high school and college. After retiring from my job as an engineer I started writing articles for American Woodworker magazine.

Table Box

My wife loves boxes, especially unique boxes. For her birthday I designed a box that looks like a table. The table portion is a stave construction of eight pieces of wood glued into a cylinder. I turned the upper part round and then turned the outer and inner profiles of the legs. I cut away the wood between the legs and carved the legs to shape. The lid looks like a table cloth and is also turned and carved. The doily decoration on the top of the table cloth was lasered in by Dakota Awards.



Technical Details:

Materials: Maple and Aspen.

Finish: Water-based Polyurethane.

Dimensions: .5" (w) x 5.5" (h) x 4.5" (d)

Price: Not For Sale.

No. 2117

R

iaz Missaghi
(262) 271-7226
rmissaghi@gmail.com

Being Interested in accurate sound reproduction I turned to woodworking to realize ideas for loudspeakers. This is my first foray into using solid wood, learned a lot about humidity, but very happy with the sound.

3 Way Active Speaker System

Made of natural wood but interfaced with digital inputs. This 600W stereo sound system has a dedicated amplifier for each driver fed by a digital crossover which accepts an optical audio input for zero signal loss from the musical source. Thanks to digital signal processing the bass extends to below 30hz even in a sealed cabinet, enabling moving realism. The curves of the front baffle support the tweeter's lower registers and blend the mid-range into the sound stage.



Technical Details:

Materials: Poplar, Brass and Electronics.

Finish: Poly.

Dimensions: 36" (w) x 36" (h) x 12" (d)

Price: Please Inquire.

No. 2118

Terry Hanson
9174 Harpers Court N.E.
Blaine, MN 55449
hansonterry90@gmail.com

I am a retired software developer. I have been dabbling in woodworking for a number of years, gradually improving the workshop I built in the third stall of our garage. Now in my retirement I am trying to put those tools to good use.

Chest of Drawers

This nine-drawer chest is based on an American Woodworker cover-story project design I saw years ago (#116 September 2005) which was, in turn, an updated version of Gustav Stickley's original offering from the early 1900's. I departed from the magazine's design in a number of respects (for example, featuring hand-cut dovetails for the drawers and adding a divider panel above the top row of drawers). However, the over-all unique design of the original Stickley chest remains evident in the understated bow-shape of the legs, the large over-hanging top, the arched front apron, and the choice to place the largest drawer second-to-last.

Technical Details:

Materials: Quarter-sawn white oak; oak plywood for divider dust-panels and chest back-panel; purchased hardware drawer pulls.

Finish: Water-based dyes, dark walnut Danish Oil, amber shellac, wiping varnish.

Dimensions: 37" (w) x 54" (h) x 22" (d)

Price: Not For Sale.



No. 2119

Jake Brown
5616 Elliot Ave
Minneapolis, MN 55417
(540) 525-5169
Jakebrownva@gmail.com
Platypus Builds

Jake Brown is a designer and Craftsman of custom furniture. He is a graduate of the Vermont Woodworking School in Fairfax, VT. Jake strives to provide the highest quality of custom furniture using responsible and sustainable materials.

Alhambra

Chair inspired by the Moorish Architecture in Granada, Spain.



Technical Details:

Materials: Red Birch.

Finish: Oil varnish blend.

Dimensions: 23" (w) x 52" (h) x 17" (d)

Price: Not For Sale.

No. 2120

Jake Brown
5616 Elliot Ave
Minneapolis, MN 55417
(540) 525-5169
Jakebrownva@gmail.com
Platypus Builds

Jake Brown is a designer and Craftsman of custom furniture. He is a graduate of the Vermont Woodworking School in Fairfax, VT. Jake strives to provide the highest quality of custom furniture using responsible and sustainable materials.

Cortado

Exploration of the juxtaposition of Organic and Geometric design elements.



Technical Details:

Materials: Grey Elm and Walnut.

Finish: Odies Oil.

Dimensions: 28" (w) x 16" (h) x 48" (d)

Price: Not For Sale.

No. 2121

K

evin Alto
Eden Prairie, MN 55347
kjalto@q.com

A retired engineer. More importantly, a lifetime woodworker starting with wildly unsafe treehouses and leaky shacks built in my grade school years to house carpentry with my dad and logging with my uncles later on. My main interest today is traditional hand tools and methodology working with native species.

Birch Bowl

This piece is from a fallen and decaying birch found on my Grandfather's property in Embarrass, MN. I used hand gouges to remove approximately 1" of decayed outer material which defined the outer surface. Hollowing out the inside was largely accomplished by using red campfire embers. Embers were placed in areas where material was to be removed. After a time the embers would be dumped and the charred wood in the bowl would be scrapped back to parent material. This process was repeated many times. The jagged edge (and other areas) was dried punky wood which burned completely away. Gouges were used to finish the surface. The hollowing process was a first for me and done during a 2-day traditional craft encampment in Pepin, WI. How wonderful to share this experiment with others.

Technical Details:

Materials: White (Paper) Birch

Finish: Tried and True Danish Oil/Wax.

Dimensions: 12" (w) x 17" (h) x 6 1.2" (d)

Price: Not For Sale.



No. 2122

Jay Ankeny
671 Woodlawn Ave
St. Paul, MN 55116
Jankeny@jetup.net
(320) 290-3579

Retired Engineer/farmer. Been a lifelong woodworker. Limited time to work along with limited equipment. I now have my shop in the basement and now have the time to spend to tune my tools to get the most out of them. The more I learn, the more I appreciate the skills of my fellow woodworkers.

Coffee Table

My inspiration was my Norwegian wife who wanted a coffee table that would be functional as well as fitting our view of Scandinavian furniture. Walnut has long been a favorite as the wood for this and other pieces grew on the farm where I lived. If you look at the top there is evidence of bug activity, a natural part of the life of a tree and a validation that this tree had lived a full life. It is a reminder to me that one does not need flawless material to make a piece to be proud of. I find it satisfying that a piece can be a bit of our lives as well as an object to enjoy--our dining room table for 12 is made from a tree that my wife's Grandmother swung on as a child.



Technical Details:

Materials: Walnut.

Finish: Polyurethane.

Dimensins: 25'' (w) x 17'' (h) x 50'' (d)

Price: Not For Sale.

No. 2123

Bob Bridigum
1393 Park Street
White Bear Lake, MN 55110
rlbridigum@aol.com
(952) 201-1899

Bob has been doing woodworking off and on since college days, fifty years ago, mostly making furniture, decorative boxes, and custom frames for family and friends. Since retirement in 2011, Bob and his wife Susan have become snowbirds so he currently has two shops. Power tools are in half a garage in WBL and the hand tool shop is in Vero Beach Florida.

Carson Rocker

This rocker, based on a Hal Taylor design, is made from 100 year old walnut tree, harvested in southern Minnesota and stored in a barn for twenty years before being offered to Guild members in the early 2000's. Fabrication is a combination of power tools for roughing out the pieces and hand tool work for sculpting and refining final shape. The rocker was completed and ready for a finish at the point time the EPA banned the sale of Sam Maloof oil/poly and oil/wax finishes. With considerable experimentation, Bob was able to formulate a similar finish to that previously available commercially. The result is a seven coat finish, four coats of oil/poly and three coats of oil wax as recommend by Sam.

The rocker was made as a gift for his Grandson, Carson.



Technical Details:

Materials: Walnut and maple.

Finish: Oil/poly and oil/wax.

Dimensions: 27" (w) x 41" (h) x 52" (d)

Price: Not For Sale.



No. 2124

William W. Lammers
3649 Mount Vernon Ln
Woodbury, MN 55129
wwlammers@gmail.com
(651) 592-2385

I am a life long self taught woodworker. I enjoy including carving or marquetry into my projects.

Greene and Greene Inspired Dining Chair

This is a Greene and Greene inspired dining chair with an Amish twist. It is one of four that I built. Many dining chairs are uncomfortable to sit in for more than an hour. I wanted to break that para dyne. Using a prototype I experimented with different angles of the back and curvatures of the splat. The chair has an laminated splat with multiple curves that conforms to the back of the person using it. I upholstered the seats with leather. After watching a few YouTube videos, I tackled it.



Technical Details:

Materials: Cherry, the marquetry flowers and stems are maple, poplar and red oak.

Finish: Cherry was sealed with Neil's Surface Conditioner, oil stained and hand applied .

Dimensions: 20" (w) x 53" (h) x 20" (d)

Price: Not For Sale.

No. 2125

Steve Robb
5141 Sheridan Ave S.
Minneapolis, MN 55410
steve@dbz.net
(612) 719-1056

I've always been inspired by artisans and their pursuit of excellence in their craft. As a clockmaker working primarily with wood, I draw inspiration from the past to find interesting techniques or features that I can incorporate into a new design. The challenge as an artist is to combine them in new and interesting ways, while at the same time, achieve accuracy and precision in a medium whose stability is affected by its environment.

R10 - A Table Clock

This original clock design is based on an escapement mechanism that was invented in 1986 by James Arnfield and is triggered by a pendulum that beats once every 2 seconds. All the component pieces were built and shaped entirely by hand and can maintain an accuracy of up to 10 seconds a day. The clock is powered by gravity and the driving weight is automatically rewound by a small electric motor once every 2 hours.



Technical Details:

Materials: Cherry, Maple and Padauk.

Finish: Shellac and wax.

Dimensions: 18" (w) x 24" (h) x 23 1/2" (d)

Price: \$8,000.

No. 2126

R

Robert Sorenson
4901 Woodlawn Blvd.
Minneapolis, Mn 55417
(612) 729-8509
soren001@umn.edu

I made a number of pieces of furniture for our home and restored an old fishing boat. These include a desk, chair, stool, benches, bookshelves, boxes etc. More recently I have been practicing small projects that include inlay. I am a self-taught amateur woodworker and enjoy building up my skills in joinery and design.

Serving Tray

I made this tray to carry lunch or drinks from our kitchen to an outside patio. I wanted to be able to carry the tray with one hand and without spilling the liquids. I had seen similar metal trays for transporting coffee and tea in Morocco. So I made my tray from wood and fastened lanyards (removable) from each corner. The lanyards are gathered and looped over one finger to carry the tray. The tray is now self-leveling and can be swung quite widely without spilling a drop. The tray can be maneuvered easily down a hall and out the door with ease. Angled dovetails were used for frame joinery. The Baltic birch panel was stained with 2 coats of a mixture of OSMO Jatoba and Cognac stains. The inlays were provided by a friend in Taiwan.



Technical Details:

Materials: Mahogany and Baltic Birch.

Finish: OSMO Top Oil for counter tops (2 coats).

Dimensions: 13" (w) x 1 1/2" (h) x 15" (d)

Price: Not For Sale.



No. 2127

Charles Finne
6900 W 105th St
Bloomington, Mn 55438-2183
(952) 829-5696
(612) 940-5873
cfinne@icloud.com

I'm a 75 year old retired surgeon and hobby woodworker.

Lila's Bank

A tradition, started by making a hand-made piggy bank for my grandson to encourage thrifty habits, evolved into making similar items for each of my nieces and nephews. Each has been crafted of different woods, hand cut dovetail construction, experimenting with different techniques of grain wrapping and door construction, and handle construction. I am delighted that my daughter-in-law, Stephanie Finne, consented to do the lettering.



Technical Details:

Materials: Ambrosia maple and brass stock.

Finish: Waterlox and wax.

Dimensions: 6" (w) x 7" (h) x 6" (d)

Price: Not For Sale.

No. 2128

Charles Finne
6900 W 105th St
Bloomington, Mn 55438-2183
(952) 829-5696
(612) 940-5873
cfinne@icloud.com

I'm a 75 year old retired surgeon and hobby woodworker.

Miles's Bank

A tradition, started by making a hand-made piggy bank for my grandson to encourage thrifty habits, evolved into making similar items for each of my nieces and nephews. Each has been crafted of different woods, hand cut dovetail construction, experimenting with different techniques of grain wrapping and door construction, and handle construction. I am delighted that my daughter-in-law, Stephanie Finne, consented to do the lettering.



Technical Details:

Materials: Zebrawood and brass stock.

Finish: Waterlox and wax.

Dimensions: 6" (w) x 7" (h) x 6" (d)

Price: Not For Sale.

No. 2129

Tom Caspar
3420 20th Ave S
Minneapolis, MN 55407
(612) 518-0434
tcaspar1910@gmail.com

A founding member of the Guild, Tom has been a professional woodworker since apprenticing at an old-fashioned cabinet shop in the 1970s. He has been a self-employed furniture maker, the editor of *American Woodworker* and *Woodwork Magazines*, creator of *The Unplugged Woodshop* (a course on hand tools offered at Woodcraft Supply) and a faculty member of The Center for Furniture Craftsmanship.

Ming Low Table

This table looks like it might have been designed by Greene and Greene or by a Mid-Century master. Nope. The design is from China in the 1600s – the Ming Dynasty. The complicated joinery is typical of classical Ming furniture, too.

I built the table from one large plank of air-dried walnut. The top's central panel is veneered. (Ming craftsmen used thin pieces of solid wood, which would crack or show gaps in our dry winter climate.) I made the panel's core from basswood.



Technical Details:

Materials: Walnut and basswood.

Finish: Varnish.

Dimensions: 29 3/4" (w) x 21" (h) x 18 1/2" (d)

Price: Not For Sale.

No. 2130

John Walkowiak
3452 Humboldt Ave S
Minneapolis, MN 55408-3332
(612) 824-0785
johnwalkowiak@comcast.net

I am a lifelong resident of Mpls. I have been working with wood most of that time. I am particularly attracted to antique furniture forms of all kinds. As such, I prefer to do my woodworking with hand tools, and particularly antique tools. I belong to several antique tool collector groups, and thru them have been able to equip my shop with antique tools of all kinds to work with.

Thomas Jefferson's Revolving Book Stand

This is my replica of a revolving bookstand designed by Thomas Jefferson and made by his enslaved joiner John Hemmings. It is made from an ancient Ash tree, which was harvested at Monticello, Jefferson's estate. After roughing with power tools the wood was worked and joinery was done by hand, using period 18th C. tools, such as would have been used to make the original. The details and construction are true to the original. I purposely left some tool marks, such as was the practice in the 18th C. On the laser engraved panels are quotes from Jefferson's writings. The quotes are done in Declaration script, taken from the Declaration of Independence, and Jefferson's signature is from his hand. The hinges are a period type, and the clips that hold the panels closed I made from spring steel. It is hand finished with an aniline dye, glaze, shellac, and wax.

Technical Details:

Materials: Ash wood, brass hinges, spring steel clips.

Finish: Water based aniline dye, glaze, shellac and wax.

Dimensions: 12" (w) x 24" (h) x 12" (d)

Price: Not For Sale.



No. 2131

Tim Heil
3800 Big Fox Road
Gem Lake, MN 55110
timjheil@gmail.com
(651) 407-1300

My hobby is woodturning That means I cut wood as it spins on the lathe. I was introduced to woodturning during high school shop class in 1969. I make functional things like fishing lures, rolling pins, and tool handles. This is the 20th year I have shown work at the Northern Woods Show.

Minnesota Fishing Lures

I like to use the fishing lures I make. And, its extra fun if I actually catch something. I strive to use wood with lively grain that adds to the beauty and function of each plug. Sometimes I'll find teeth marks on a lure after a fish has bitten it. It's a surprising addition to the story each lure has to tell.



Technical Details:

Materials: Hard Curly Maple and Berkley hooks.

Finish: Waterlox.

Dimensions: 1" (w) x 1" (h) x 8" (d)

Price: Please Inquire.

No. 2132

Tony Kubalak
3660 Robin Lane
Eagan, MN 55122
apk@uwalumni.com
(651) 452-2021

I have been a period furniture maker since 1999. I am interested in high style Queen Anne and Chippendale pieces. All of my period projects have been faithful reproductions of originals that are part of museum or private collections. I strive to make each piece as close to the original as possible. This includes surface texture and hand tool marks as well as construction details. In addition I give the finish an aged look and feel. The goal is to have my reproduction look and feel like it is 250 years old.

Philadelphia Chippendale Side Chair

This is my reproduction of a Philadelphia Chippendale Side Chair from Colonial Williamsburg. There is another one, probably from the same set, in the Milwaukee Museum of Art. The carvings are above the norm, which is the main attraction for me. I built this chair using hand tools for everything other than rough shaping. The joinery is all hand cut mortise and tenon as was on the original. The carving was done by hand using traditional tools. The finish is hand applied and refined. This design is one of the finest examples of the form I have seen and dates to 1760.

Technical Details:

Materials: Mahogany and pine.

Finish: Water based dye, shellac and glaze.

Dimensions: 23" (w) x 40 1/2" (h) x 21" (d)

Price: Please Inquire.

No. 2133

S

cott Horne
2514 NE 4th Street
Minneapolis, MN 55418
(612) 782-9967
shorne@bitstream.net

Decades long windsor chair maker, NE
Minneapolis.

Highback

Depending on the type of Windsor, I use multiple traditional and modern techniques: employing augers, spoke shaves and drawknives to riving, steam bending and wood turning alongside specific power tools that I deem efficient.

Technical Details: Materials: Cherry (legs, crest) riven red oak (back) eastern w pine (saddle).

Finish: Quality latex.

Dimensions: 22" (w) x 43" (h) x 18" (d)

Price: \$1400.

No. 2134

Scott Horne
2514 NE 4th Street
Minneapolis, MN 55418
(612) 782-9967
shorne@bitstream.net

Decades long windsor chair maker, NE
Minneapolis.

Kitchen Chair

Depending on the type of Windsor, I use multiple traditional and modern techniques: employing augers, spoke shaves and drawknives to riving, steam bending and wood turning alongside specific power tools that I deem efficient.

Technical Details:

Materials: Cherry.

Finish: Minwax tung oil.

Dimensions: 17" (w) x 36" (h) 17" (d)

Price: \$825

No. 2135

S

id Nystrom
996 Glen Paul Ct
Shoreview, MN 55126-8113
(651) 483-9867
s.nystrom@comcast.net

Sid & Lawrence Nystrom are amateur woodworkers and hobbyists. Sid is a retired medical device engineer and Lawrence is a business consultant in the Twin Cities.

Side Table

This table was an exercise in preserving a wonderful chunk of black walnut. This single table was made to play chess between two custom-made black walnut Morris chairs. The table legs were designed to bring some balance and stability to the tabletop but not be overly distracting. Designed to display the natural beauty of its hand-oiled black walnut planks, the table features a thick faceted surface cantilevered over an angular, tripod base. Its distinctive shape makes it a functional yet visually dynamic addition as a side table to a Morris chair.

Technical Details:

Materials: Black Walnut.

Finish: Linseed oil, polyurethane and wax.

Dimensions: 17 1/2" (w) x 19 3/4" (h) x 20 1/2" (d)

Price: Not For Sale.

No. 2136

Holden Tranquillo
13267 Wyncrest Court
Arden Hills, MN 55112
holdentranquillo@gmail.com
(763) 300-5782

PhD Student, Mechanical Engineering-
University of Minnesota. Part Time
Employee - Rockler Woodworking and
Hardware. Avid woodworker and YouTuber

Modern Side Table

After practicing traditional woodworking techniques (hand-cut joinery, planing, chiseling, cabinet-scraping) on smaller builds for years, I am finally ready to start applying them to larger-scale pieces. The spalted poplar burl top is from a coworker's collection, and the table was built for a friend of mine. She chose the base species and left the design up to me! The bridle joints are hand-cut and feature a 5 degree taper. The top and bottom of the base are secured with half laps and pinned with dowels. The dowels are made from the same piece of sapele used for the rest of the base. Finally, yellowheart dutchman joints are added to the poplar in order to stabilize the slab.



Technical Details:

Materials: Sapele, Spalted Poplar and Yellowheart.

Finish: Odie's Oil.

Dimensions: 15" (w) x 22" (h) x 20" (d)

Price: Not For Sale.



No. 2137

Erik Preston
Preston Wood Arts
500 3rd Street South
Grove City, MN 56243
(320) 491-8524
prestonwoodarts@gmail.com

In my childhood, I always enjoyed building things and got exposure to woodworking via a close family friend who is a fantastic wooden clock maker. In high school, I was fortunate to have the opportunity to build a sailboat from scratch. After my undergraduate studies at Concordia College, Moorhead, MN, I studied carpentry at the NW School of Wooden Boat Building, focusing on traditional large craft construction and yacht interiors. Through my studies, I developed a passion for traditional hand tool woodworking. Since finishing school, I started my furniture business, Preston Wood Arts.

Music Stand

As a violinist and guitar player who was planning to play in more than one wedding this summer, I felt it was time I had a music stand that matched my music. This piece is my original design which draws on my love of the lines of boats while also prioritizing function. To make the stand easier to transport, the front legs are removable, and the music tray can fold all the way back into the crook of the stand. All joinery was done by hand using traditional hand tools with some rough shaping on the band saw of the curved members. I also designed and turned the brass hardware.



Technical Details:

Materials: Sapele, Douglas Fir and Brass.

Finish: Hand rubbed Teak Oil.

Dimensions: 23" (w) x 55" (h) x 16" (d)

Price: Please Inquire.

No. 2138

Erik Preston
Preston Wood Arts
500 3rd Street South
Grove City, MN 56243
(320) 491-8524
prestonwoodarts@gmail.com

In my childhood, I always enjoyed building things and got exposure to woodworking via a close family friend who is a fantastic wooden clock maker. In high school, I was fortunate to have the opportunity to build a sailboat from scratch. After my undergraduate studies at Concordia College, Moorhead, MN, I studied carpentry at the NW School of Wooden Boat Building, focusing on traditional large craft construction and yacht interiors. Through my studies, I developed a passion for traditional hand tool woodworking. Since finishing school, I started my furniture business, Preston Wood Arts.

End Table Pair - Piece 1

I designed this end table at the request of my wife who wanted a piece that emulated the simple lines of midcentury modern furniture and incorporated a generous drawer for storage. I enjoyed the first build and decided to make a second set to this design. This pair uses torrefied ash and maple sourced locally. All dovetails and other joinery are hand cut and all surfaces were finished with a smoothing plane before applying a shellac finish. I have always wanted to be able to create my own metal hardware for my furniture, and during covid, I had the opportunity to begin learning metal working. The brass handles are some of the first fruits of my endeavors in metal design and hand-building.



Technical Details:

Materials: Torrefied Ash, Maple and Brass.

Finish: Shellac with a bees wax polish.

Dimensions: 22" (w) x 24 1/2" (h) x 14" (d)

Price: \$1100.

No. 2139

Erik Preston
Preston Wood Arts
500 3rd Street South
Grove City, MN 56243
(320) 491-8524
prestonwoodarts@gmail.com

In my childhood, I always enjoyed building things and got exposure to woodworking via a close family friend who is a fantastic wooden clock maker. In high school, I was fortunate to have the opportunity to build a sailboat from scratch. After my undergraduate studies at Concordia College, Moorhead, MN, I studied carpentry at the NW School of Wooden Boat Building, focusing on traditional large craft construction and yacht interiors. Through my studies, I developed a passion for traditional hand tool woodworking. Since finishing school, I started my furniture business, Preston Wood Arts.

End Table Pair - Piece 2

I designed this end table at the request of my wife who wanted a piece that emulated the simple lines of midcentury modern furniture and incorporated a generous drawer for storage. I enjoyed the first build and decided to make a second set to this design. This pair uses torrefied ash and maple sourced locally. All dovetails and other joinery are hand cut and all surfaces were finished with a smoothing plane before applying a shellac finish. I have always wanted to be able to create my own metal hardware for my furniture, and during covid, I had the opportunity to begin learning metal working. The brass handles are some of the first fruits of my endeavors in metal design and hand-building.



Technical Details:

Materials: Torrefied Ash, Maple and Brass.

Finish: Shellac with a bees wax polish.

Dimensions: 22" (w) x 24 1/2" (h) x 14" (d)

Price: \$1100.

No. 2140

Gregg Nordby
Nordby Woodcraft
10309 131st Ave N
Champlin, MN 55316-1101
(612) 850-3198
gnordby1991@gmail.com

Gregg Nordby is a 30 year old semi professional woodworker. His interest in woodworking started in high school during shop class. Since then he has found joy in using a combination of modern tools combined with hand techniques. He currently operates Nordby Woodcraft building cabinets and furniture for clients. He is also a police officer in the twin cities metro area.

Bamboozled Bookshelf

The bookshelf was inspired by a metal hexagon wall ornament. The “half hex” theme can be seen throughout. It is a combination between mid century modern and Japanese design. It is constructed of bamboo and rustic walnut. Striving to keep this a modern piece, I elected to use soft close hardware.

Technical Details:

Materials: Bamboo and walnut.

Finish: Sprayed pre-catalyzed lacquer.

Dimensions: 48” (w) x 79” (h) x 17” (d)

Price: \$3000.

No. 2141

Deane Hillbrand
90238 Oak Hill Road
Sturgeon, MN 55783
(218) 658-4370
deanep.hillbrand@gmail.com

My trade and profession for 40 years has been in Log Building and Timber Framing and those influences color my furniture and woodworking designs; albeit on a smaller scale. Those designs are almost always a combination of flat planes and the organic forms found in the material that I choose to use.

Splay Bench

This bench is my interpretation of a sketch that my wife Katherine drew as we were tossing about ideas for a table design for a client of ours. I was struck by the simple form of it yet a more subtle interest comes from the live edges, tapered legs and exposed joinery. It is made of four pieces of Black Cherry wood assembled with two splines and two wedges of Black Walnut. It can be completely knocked down and reassembled. We use it as a coffee table.



Technical Details:

Materials: Black Cherry with Black Walnut splines and wedges.

Finish: Oil.

Dimensions: 35" (w) x 17 1/2" (h) x 18" (d)

Price: Not For Sale.

No. 2142

Chris Lyons
CLyons Creations
Bloomington, MN 55431
clyonscreations@gmail.com
clyonscreations.com

Building guitars has always been a passion since I was 16. Each build is a culmination of new skills and design ideas, a representation of multifaceted growth. Fine tuning the elements of instrument construction keeps me coming back for more.

Burl Top 7 String Guitar

This instrument was constructed to test the growth of design capabilities gathered throughout my 20 years of woodworking. The body consists of a dyed, stabilized, and cast hybrid wood/resin top, complemented by a chambered mahogany core and quilted maple back. The 11 piece curly maple/wenge set neck is capped with a veneer from the body top and holds a Brazilian rosewood multi-scale fretboard. The triangular fret inlays & markers are made from luminescent epoxy. Designed for sounds of clear, large tonal capabilities, a wide tuning range, and an eye-grabbing forte. This individual neck is carved with a desired ergonomic shape for the owner. Lightweight and well-balanced, this piece is a skilled achievement that has set a new standard for my work moving forward in both craftsmanship and design. It has been a noteworthy experience, indeed.



Technical Details:

Materials: Body: Buckeye Burl, mahogany, quilted maple. **Neck:** curly maple, wenge, brazilian rosewood fretboard.

Finish: Lacquer on the body and hand rubbed oil urethane on the neck.

Dimensions: 20" (w) x 40" (h) x 12" (d)

Price: Not For Sale.

No. 2143

D

ave Willemin
9324 Palmer Rd
Bloomington, MN 55437
dwillemin@gmail.com
(612) 790-0630

I grew up with an appreciation for tools by doing projects with my father and visiting my grandfather's shop. Now I enjoy doing projects with my adult son and daughter. My son, Peter, and I are currently studying woodworking with Tom Caspar. I love the natural beauty of wood and appreciate how the craft of woodworking reveals the character of a board.

Dovetailed Box

Making this box was about understanding how to craft dovetails. I learned the hand tools, the layout, and the overall process involved in creating such a strong and beautiful joint. I enjoyed looking at antique pieces to observe how dovetails were cut and felt a connection to the traditional craft. The best part was sharing the process with my son as we built our boxes side by side.

Technical Details:

Materials: Ambrosia Maple.

Finish: Oil based gel stain.

Dimensions: 11 1/2" (w) x 6 1/2" (h) x 7" (d)

Price: Not For Sale.

No. 2144

Bob Kraby
1319 County Rd C East
Maplewood, MN 55109
woodbkraby@yahoo.com
(651) 431-1679

Bob became involved in woodworking more than a decade ago. When he is not working, Bob spends countless hours in his home-shop developing the highly artistic side of his craft, consistently striving to learn new techniques.

Al Cajon

I made this piece years ago after a client asked me to re-finish their cajon (also referred to as a beat box). They had borrowed it to a drummer friend who had a chain/wallet and had scratched it up while playing it. I liked the sound of the cajon and decided to make one of my own with some interesting wood I had lying around. Since the Merbau is porous, I used a white grain filler to highlight that particular board.



Technical Details:

Materials: Figured Maple, Baltic Birch Plywood, Curly Walnut, Figured Sapele, Merbau.

Finish: Shellac, Polyurethane and wax.

Dimensions: 14 1/4" (w) x 20 1/2" (h) x 14" (d)

Price: \$400.

No. 2145

Yana Frank
Yana Frank Design
2739 Garfield Ave
Minneapolis, MN 55408
yana@usiwireless.com
(612) 401-6992

Originally from Germany I have lived in Minneapolis for almost 30 years. My background is in Architecture but I always was more interested in designing furniture. Convinced that an understanding of wood construction is essential for good design, I worked in a custom wood shop next. The last ten years I was working as a fabricator at the Science Museum of MN, expanding my skills into welding and working with plastics. I recently quit this work in order to return to my “first love”, furniture design, and am currently running my own business of unique custom furniture.

Music Cabinet

This music cabinet was created for an audiophile who was looking for a piece of furniture both beautiful and functional. Much consideration was given to ventilation issues and how to run the cords as well as where to store the various audio components. The design consists of a walnut frame holding a fir box. I decided to accentuate the linear quality of VG Fir by gluing up thin strips of the material. This becomes a theme throughout the piece, being expressed in the joinery (finger joints) as well as the ventilation slats, the front panel and the top, with the front edge highlighting the beautiful end grain of the fir. Part of the top flips up to allow access for wiring to allow for flexible use of audio equipment. Half circular indents and walnut detailing finish off the piece and provide both finger access and chutes for cord management.

Technical Details:

Materials: Walnut and Vertical Grain Fir

Finish: Polyurethane.

Dimensions: 50” (w) x 36” (h) x 26” (d)

Price: Not For Sale.

No. 2146

Yana Frank
Yana Frank Design
2739 Garfield Ave
Minneapolis, MN 55408
yana@usiwireless.com
(612) 401-6992

Originally from Germany I have lived in Minneapolis for almost 30 years. My background is in Architecture but I always was more interested in designing furniture. Convinced that an understanding of wood construction is essential for good design, I worked in a custom wood shop next. The last ten years I was working as a fabricator at the Science Museum of MN, expanding my skills into welding and working with plastics. I recently quit this work in order to return to my “first love”, furniture design, and am currently running my own business of unique custom furniture.

On Being Human

At first this looks like a minimalist Maple box on a pedestal. Approaching it, you notice something odd – there is a dark knot in the center which seems to subtly glow. Lifting the lid you see a column of tree bark and below it a Maple sapling. This art piece is a reflection on how we as humans – or in this case woodworkers! – take something that is alive and “messy” (irregular patterns of the bark, the smell of wet earth, etc) and make it into something quite different: Smooth, angular, dead, but also with its own beauty. The goal is not to judge but to ponder this deeply human transformation. (Another interpretation sees the box as how we present to our surroundings while hiding unknown depths.) The construction of the box subtly alludes to the vertical lines of the log and the circular pattern of the growth rings.

Technical Details:

Materials: Maple, Bark and MDF (for pedestal)

Finish: Polyurethane, wax (hand rubbed finish)

Dimensions: 12” (w) x 40” (h) x 12” (d)

Price: Not For Sale.

No. 2147

A

ngela Vargas

(612) 440-9548

avbloom@comcast.net

My lifelong interest in woodworking lay dormant until 2017, when I finally took a class, making a small box with Cecilia Schiller. I knew then, there was no turning back - I had to learn more about this fascinating craft! After several introductory classes involving power tools, I wanted to learn about the use of hand tools. This led me to Tom Caspar's course, The Unplugged Workshop. My projects have evolved from making boxes to creating items of furniture for my family.

Coffee Table

This table, based on a design by Tom Caspar, was created to accompany an etagere with glass shelves. It is made of the same rough-sawn ash I used for the etagere. All the wood came from the same tree. I built the table in Tom's studio, under his supervision. The base is composed of interlocking pieces joined by large lag screws. It can be disassembled for shipping or storage.



Technical Details:

Materials: Ash.

Finish: Oil-base gel varnish.

Dimensions: 48" (w) x 19" (h) x 21" (d)

Price: Not For Sale.

No. 2148

A

ngela Vargas

(612) 440-9548

avbloom@comcast.net

My lifelong interest in woodworking lay dormant until 2017, when I finally took a class, making a small box with Cecilia Schiller. I knew then, there was no turning back - I had to learn more about this fascinating craft! After several introductory classes involving power tools, I wanted to learn about the use of hand tools. This led me to Tom Caspar's course, The Unplugged Workshop. My projects have evolved from making boxes to creating items of furniture for my family.

Drawer Box

The box was designed as an exercise in hand-cut dovetail joinery prior to making a drawer for an end table. That's why it looks like a drawer. The top, front, and back of the box is cherry milled from rough stock. The sides are basswood and the bottom is aspen. I made the box in Tom Caspar's studio, under his supervision.



Technical Details:

Materials: Cherry, basswood and aspen.

Finish: Oil-based gel varnish.

Dimensions: 14" (w) x 4" (h) x 14" (d)

Price: Not For Sale.

No. 2149

Dave Bergan
18806 Iroquois Way
Lakeville, MN 55044
david.bergan@isd194.org
(612) 387-8599

I am Social Studies teacher that was diagnosed with early onset Parkinson's in August of 2020. I started woodworking during my medical leave as physical therapy. I made some small things for my kids and family. I then decided to make an adjustable laptop desk / nightstand for my daughter to use in college.

Walnut Adjustable Laptop Desk / Nightstand

I am a Social Studies teacher who, at age 44, was diagnosed with early-onset Parkinson's in August of 2020. I started woodworking during my medical leave as a form of physical therapy. After organizing my workshop and building some shelves and drawers. I made some small crosses for my kids and a travel cribbage board for my wife. The next step was obviously to make a piece of furniture. I settled on trying to make a Colonial style adjustable laptop desk/nightstand for my daughter to use in college.



Technical Details:

Materials: Walnut, maple dowels, roller blade caster wheels and Titebond Original Wood glue.

Finish: Watco Danish Oil Natural (Table Top) & Watco Danish Oil Medium Walnut (Base).

Dimensions: 24" (w) x 38" (h) x 16" (d)

Price: Not For Sale.

No. 2150

Peter Willemin
9324 Palmer Road
Bloomington, MN 55437
(952) 715-2622
peterwillemin@gmail.com

I enjoy doing woodworking projects in my free time. Spending time in the shop and expanding my skills and knowledge with my dad is the best. We study with Tom Caspar in addition to working on many things of our own.

Dovetail Toolbox

This is a dovetailed toolbox made with ambrosia maple. I learned so much through the whole process. Cutting the dovetails and getting a tight fit was especially rewarding, but we also learned how to successfully cut the top of our box off once assembled and how to install a wedged ebony pull for easy opening. I loved working together with my dad and will enjoy using this box for many years.



Technical Details:

Materials: Ambrosia maple, walnut and ebony.

Finish: Oil-based gel stain.

Dimensions: 11 1/2" (w) x 6 1/2" (h) x 7" (d)

Price: Not For Sale.

No. 2151

B

enjamin Pedrick
1226 Knox Ave N
Minneapolis, MN 55411
bpedrick@gmail.com
(262) 674-4046

Ben is an industrial designer, focusing on crafting heritage woodworking pieces from regional hardwoods.

White Oak Coffee Table

The oak tree was harvested from the University of Minnesota, Twin Cities campus. This piece was selected for its negative center space and grain pattern. My philosophy with this piece, to quote George Nakashima, is to "...let the wood speak for itself". The vertical support structures are designed for strength and visual simplicity, giving way to the grain and form of the slab. Finished with a natural wax oil.



Technical Details:

Materials: White Oak.

Finish: Osmo Poly X Oil.

Dimensions: 30" (w) x 15" (h) x 36" (d)

Price: \$2600.

No. 2152

B

enjamin Pedrick
1226 Knox Ave N
Minneapolis, MN 55411
bpedrick@gmail.com
(262) 674-4046

Ben is an industrial designer, focusing on crafting heritage woodworking pieces from regional hardwoods.

Walnut Side Table

This walnut crotch slab came from a farmer in central Iowa. It was air-dried in my garage for 4 years before planing it flat and seeing what a unique grain pattern this piece had. Often when wood is air dried it will warp as the moisture leaves. This piece was warped like a Pringles chip, so after it was all evened out, there wasn't much thickness left. With a tapered edge and turned stiletto legs this lightweight table lets the grain take center stage.



Technical Details:

Materials: Walnut.

Finish: Osmo Poly X Oil.

Dimensions: 28" (w) x 17" (h) x 28" (d)

Price: \$1400.



No. 2153

Tom Igielski
7194 Waterstone Lane
Woodbury, MN 55125
(651) 592-0409
tpigielski@gmail.com

I am a retired IT Manager/Consultant that took to building furniture around 2010. I am basically “self taught”, but have had the privilege of taking some professional classes at nearby woodworking schools, and have also been fortunate to have had some personal tutoring from professionals in the areas of cabinet making, veneering, and jewelry boxes. I have also been able to earn a couple of Blue Ribbons at the MN State Fair with some of my pieces, and have been awarded the Jack McGowan Award for Distinguished Craftsmanship in Wood in 2017 and 2018, to go along with the Blue Ribbons.

Hickory and Ash Blanket Chest

This blanket chest was an exercise in using angles and floating tenons to build a strong, functional piece of furniture. To keep the construction manageable, all the angles are the same, off from square by 3°. The legs of this frame-and-panel chest serve as end pieces for the front, back, and end frames. The top and panels are ash; the frames are hickory. Battens were used on the edge-glued top to keep it flat. All the thicknesses were kept “beefy” (1”) for heft and double floating tenons were used for strength. To emphasize the length of the chest, the grain of the panels run horizontally. A decorative inlay sets off the grain on the top. (Many thanks to Craig Carlson for help in the assembly of the many pieces during glueup).



Technical Details:

Materials: Hickory, Ash.

Finish: Satin Wipe on Poly.

Dimensions: 48” (w) x 18” (h) x 16” (d)

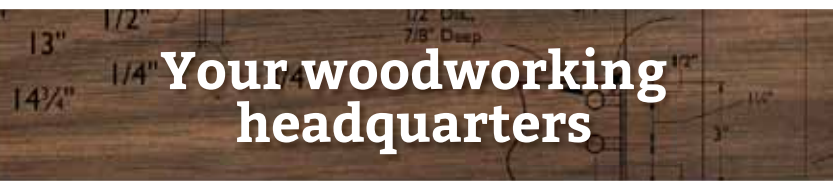
Price: Not For Sale.





WOODWORKING AND HARDWARE

Create with Confidence™



Your woodworking headquarters

HARDWARE • FINISHING • POWER TOOLS • HAND TOOLS • LUMBER • TURNING • AND MORE!

NEW! COMING SOON!

SEE STORE TO PRE-ORDER. ROCKLER® XL
ROUTER TABLE BOX JOINT JIG



NEW!

ROCKLER ROUTER TABLE SPLINE JIG



**DELUXE CONCEALED
HINGE DRILLING SYSTEM**



GLUE APPLICATOR SET



**ROCKLER BENCH COOKIE®
PLUS WORK GRIPPERS**

FREE DEMOS EVERY SATURDAY AT 11AM

3 convenient Twin Cities Locations, visit one today!

Burnsville: 2020 W. Cty Rd. 42 • (952) 892-7999

Maplewood: 1872 Beam Ave. • (651) 773-5285

Minnetonka: 12995 Ridgedale Dr. • (952) 542-0111 or online at rockler.com

Build better every day



FREE
tablet editions
for print
subscribers



Subscribe to *Fine Woodworking* and get **MORE!**

MORE trusted advice, helpful how-to guidance, and inspiring design ideas for all skill levels.

MORE in-depth tool reviews, step-by-step techniques, plus drawings, diagrams, and photos to guide you.

MORE ways to enjoy our magazine and gain unmatched woodworking information thanks to enhanced tablet editions loaded with interactive extras – **YOURS FREE** as a paid magazine subscriber.

Fine
WoodWorking

Subscribe today at FineWoodworking.com/subscribe

Or call 800-888-8286. International customers, call 203-702-2204.

Monday - Friday 9AM - 9PM ET, Saturday 9AM - 5PM ET

© 2014 The Taunton Press



OUR BRANDS



Every day, woodworkers, professional contractors and do-it-yourselfers reach for the brand they trust most...Titebond.

Our brand promise of unsurpassed product quality and technical expertise makes Titebond a preferred global choice.

Titebond



OUR PRODUCTS





Minneapolis and Jordan, MN

History

In 1933, in the depths of the Great Depression, Joseph and Frances Siwek began Siwek Lumber & Millwork what is now SIWEK LUMBER & MILLWORK, INC. The young family, newly married with a young baby, Joe Jr., struggled to make it. Unemployment peaked at nearly 25%, jobs were scarce, and Joe, Sr layed-off from his job at the railroad, he began the unimaginable, a new business.



Given permission from his former employer, Joe, Sr began dismantling “retired” wooden boxcars, bundled the scraps and pedaled them as heating firewood. Loose coal along the rail lines also was packaged and re-sold to families desperate to heat their homes. Times were tough, but so were the Siwek’s. An important work ethic was born.

They operated on E. Hennepin Ave. delivering firewood and coal in trucks. East Hennepin Beverage sold cold drinks to neighborhood homes and businesses. Eventually, America was at war and although times were still difficult, they were getting better. After World War II ended in victory and the men returned to their families, business started to change. New homes sprang up where potatoes were grown in new areas as far north as Lowry Ave.!

Coal and firewood was replaced by natural gas! The Siwek’s adapted to the new building materials market and sold lumber, plywood and insulation to needy homeowners. Basements were finished in wood, garages were added, cabins were built. In 1947, Siwek Fuel and Lumber was incorporated and moved to the current location of their headquarters on Marshall St NE, just north of Lowry Ave in Minneapolis. A shiny new business amid the industry and farm fields along the mighty Mississippi River.

Joe, Jr. and Judy, now raising a family of their own, ushered the business into this new era of prosperity. The 50’s and 60’s were boom times for the neighborhood. Many businesses grew up in NE Minneapolis and jobs were plentiful. Families raising many children lined the neighborhood streets. Miracle products, like sheet paneling for basements, pourable insulation for attics, aluminum storm windows, gypsum board replacing plaster, and hardboard for siding provided new revenues for the business.



Mike Siemsen's School of Woodworking

schoolofwood.com
651-257-9166

Chisago City, MN 55013



WOODCRAFT
Helping You Make Wood Work

Woodcraft Is The Area's
Largest Supplier Of Quality
Tools, Supplies & Advice

- Knowledgeable Sales Staff
- Attention to Quality
- Education & Expert Advice
- Wood & Lumber

*Visit Us Today.
Over 15,000 Tools & Supplies!*

	1494	
135W		Lyndale
	90 th St	★

9125 Lyndale Ave. South
Bloomington, MN 55420
952-884-3634

Quality Woodworking
Tools • Supplies • Advice



Sponsors

Kreg Enterprises

Osseo Savitt Paint

Service Grinding & Sharpening

Waterlox Coating Corporation

Lake Erie Toolworks

White Bear Makerspace

BCTW Legacy Repairs

JPW Industries

Hancock Tool Sharpening

Lie-Nielsen Toolworks

Industrial Lumber and Plywood

Franklin International

Lee Valley Tools

Sponsors

Siwek Lumber and Millwork

Forest Products Supply, Inc.

Rockler Woodworking & Hardware

Fine Woodworking Magazine

Hirshfelds

Old School Arts Center

Mark Powel

Woodcraft

Mike Siemsen's School of

Woodworking

Society of American Period Furniture

Makers

Forest Products Supply, Inc.

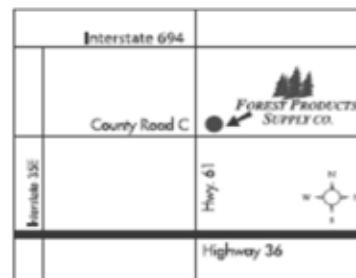
Hardwood lumber supplier since 1972

We have the best selection of domestic and exotic hardwood lumber in the Twin Cities. We have installed a new 52" wide belt sander with three sanding heads to help you with your larger projects.

Forest Products provides:

- Seventy different species of lumber in stock
- 10% discount on lumber to guild members
- Cabinet grade plywood (nearly any plywood can be custom ordered)
- Exotic one of a kind turning stock
- Slab lumber up to 4 inches thick and 24 inches wide
- Sanding services (52 inch time saver)
- Planing services (24 inch planer)
- CNC custom cutting services
- Resaw services (resaw up to 12 inches)
- Free advisory services on your furniture or cabinet projects

LOCATION:
1 Light North of Hwy. 36 on Hwy. 61
Northeast Corner



FOREST PRODUCTS SUPPLY INC.

2650 East Highway 61
Maplewood, MN 55109

Phone (651) 770-2834 • Fax (651) 770-3376

www.forestproductssupply.com

HOURS:

9:00 a.m. - 8 p.m. Monday-Thursday
9:00 a.m. - 5 p.m. Friday
9:00 a.m. - 3 p.m. Saturday
Closed - Sunday

Sponsors



Exhibitor's Index

A

Alto, Kevin 30
Ankeny, Jay 31
Ausen, Ron 17

B

Bergan, Dave 58
Bridigum, Bob 32
Brown, Jake 28, 29

C

Caspar, Tom 63

F

Finne, Charles 36, 37
Fox, Stuart 22, 23
Frank, Yana 54, 55

G

Griffin, Jerry 18

H

Hanson, Terry 27
Heil, Tim 40
Hillbrand, Deane 50
Horne, Scott 42, 43

I

Igielski, Tom 62

K

Knudson, Roger 10
Kocourek, Charles 19, 20, 21
Kraby, Bob 53
Kubalak, Tony 41

L

Lammers, William 33
Lane, David 11
Lyons, Chris 51

M

Missaghi, Riaz 26
Moore, Robert 14, 15

N

Nesnidal, Michael 16
Neu, Ed 12, 13
Nordby, Gregg 49
Nystrom, Sid 44

P

Pedrick, Benjamin 60, 61
Preston, Erik 46, 47, 48

R

Robb, Steve 34

S

Sorenson, Robert 35

T

Tranquillo, Holden 45
Tendick, Richard 24, 25

V

Vargas, Angela 56, 57

W

Walkowiak, John 39
Willemin, Dave 52
Willemin, Peter 59